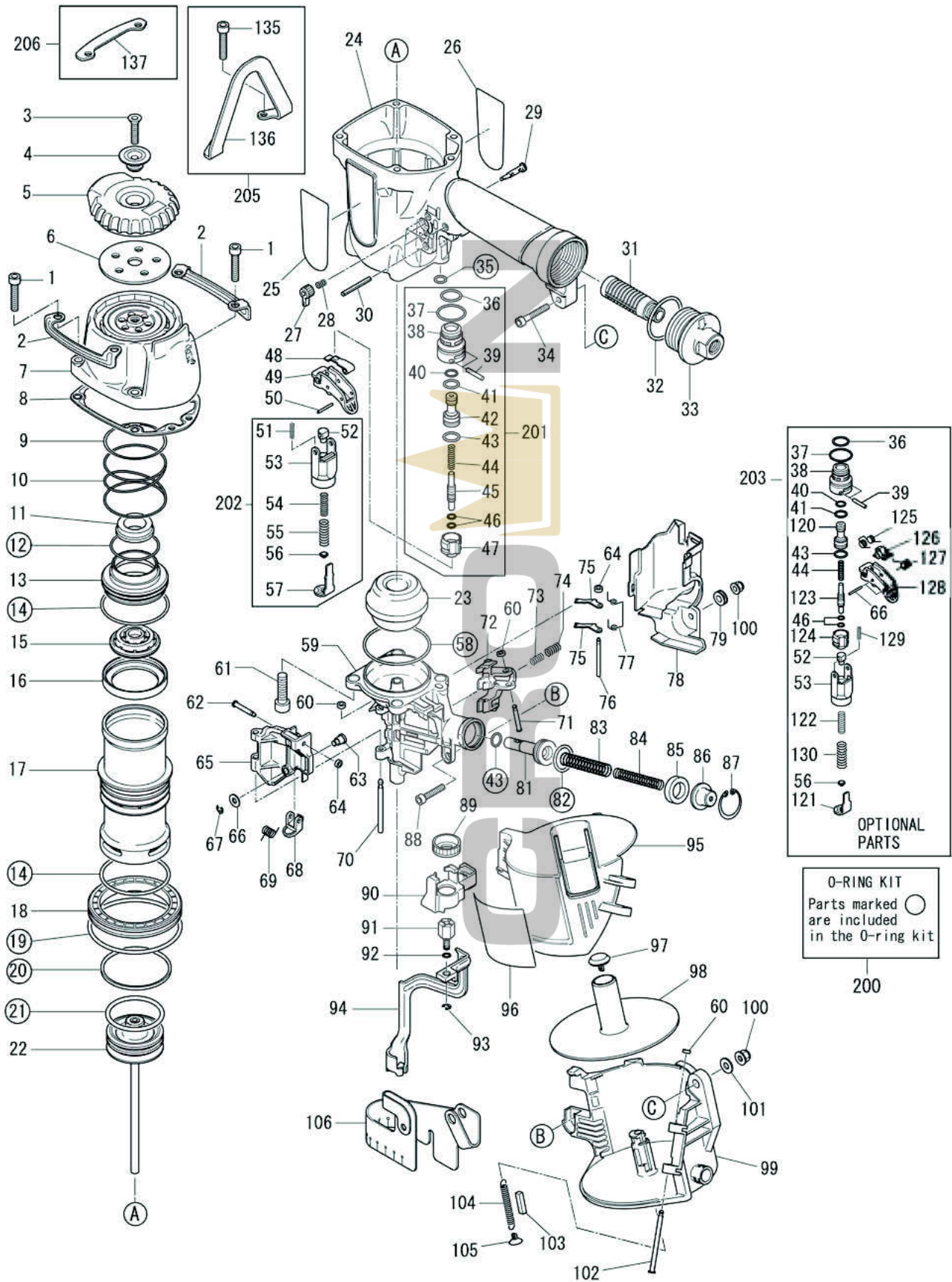


CN665

DECKING COIL NAILER



MAX PARTS PRICE LIST

JUNE 2010

Model	Part NO	Part Code	Description	List Price	Ratio
CN665	1	BB40422	BOLT 6X30	\$0.50	20
CN665	2	CN36348	PROTECTOR	\$3.84	10
CN665	3	AA82411	SCREW M6X27	\$0.36	1
CN665	4	KN11393	EXHAUST COVER HOLDER, REPLACES CN35328	\$2.80	1
CN665	5	CN35294	EXHAUST COVER	\$8.36	5
CN665	6	KN11392	FILTER B, REPLACES PART# CN35296	\$5.50	1
CN665	7	CN70160	CYLINDER CAP UNIT	\$69.60	1
CN665	8	CN36308	CYLINDER CAP SEAL	\$19.38	10
CN665	9	CN36331	WASHER, CYLINDER CAP	\$0.64	1
CN665	10	KK23655	COM SPRING 3655	\$9.26	10
CN665	11	CN36107	PLAIN WASHER B	\$9.80	1
CN665	12	HH11141	O RING ARP568-138	\$1.32	10
CN665	13	CN35290	HEAD VALVE PISTON	\$3.84	1
CN665	14	HH12101	O-RING AG55	\$1.26	20
CN665	15	CN35289	PISTON STOP	\$6.62	10
CN665	16	CN34994	HEAD VALVE SEAL	\$6.12	10
CN665	17	CN36311	CYLINDER	\$59.56	1
CN665	18	CN36312	CYLINDER RING	\$3.84	1
CN665	19	HH14152	O-RING AS568-231	\$1.76	5
CN665	20	CN36330	CHECK VALVE	\$12.00	5
CN665	21	HH11809	O-RING P53	\$6.62	20
CN665	22	CN70162	MAIN PISTON UNIT	\$71.88	10
CN665	23	KN11219	BUMPER	\$9.04	10
CN665	24	CN81067	FRAME ASSY	\$122.32	1
CN665	25	CN36337	NAME PLATE (CN565)	\$2.32	1
CN665	26	CN35636	WARNING LABEL (FRAME)	\$1.36	1
CN665	27	CN35075	TRIGGER LOCK LEVER	\$1.10	1
CN665	28	KK23507	COMPRESSION SPRING 3507	\$0.20	1
CN665	29	CN35074	TRIGGER LOCK DIAL	\$1.10	1
CN665	30	FF21611	ROLL PIN 3X32 AW	\$0.20	20
CN665	31	TA17024	FILTER A---Replaces Old# CN33690	\$11.06	1
CN665	32	HH12118	O-RING 1AG35	\$1.42	1
CN665	33	CN81224	END CAP (REPLACES TA17032)	\$21.82	1
CN665	34	BB40470	SCREW5x32	\$0.56	5
CN665	35	HH11105	O-RING 1AP7	\$0.20	10
CN665	36	HH11125	O-RING 1AP12	\$0.44	10
CN665	37	HH11138	O-RING 1AP20	\$0.44	10
CN665	38	CN31323	TRIGGER VALVE HAUSING	\$3.92	1
CN665	39	FF30161	STRAIGHT PIN 161	\$0.44	1
CN665	40	HH11119	O-RING 1AP6	\$0.44	10
CN665	41	HH11209	O-RING 1BP7	\$0.44	10
CN665	42	CN33010	PILOT VALVE	\$6.68	1
CN665	43	HH11113	O-RING 1AP9	\$0.44	10
CN665	44	KK24123	COMPRESSION SPRING 4123	\$1.22	10
CN665	45	CN35779	TRIGGER VALVE STEM	\$6.44	5
CN665	46	HH11901	O-RING 1B1, 4X2,5	\$0.20	20
CN665	47	CN33009	TRIGGER VALVE CAP	\$3.32	5
CN665	48	CN35115	CONTACT LEVER	\$1.82	5
CN665	49	CN35714	TRIGGER (REPLACES CN35648)	\$1.52	5
CN665	50	FF22402	SPRING PIN 2X16	\$0.20	5
CN665	51	KK23129	COMPRESSION SPRING 3129	\$0.20	5
CN665	52	CN35059	CONTACT ARM GUIDE "B"	\$3.42	5
CN665	53	CN37842	CONTACT ARM (REPLACES CN35139)	\$2.20	1
CN665	54	KK23735	COMPRESSION SPRING 3735	\$0.36	5
CN665	55	KK23736	COMPRESSION SPRING 3736	\$0.36	5
CN665	56	CN35004	CONTACT BUMPER	\$0.64	5

MAX PARTS PRICE LIST

JUNE 2010

Model	Part NO	Part Code	Description	List Price	Ratio
CN665	57	CN35780	CONTACT ARM A, CN37845	\$2.56	5
CN665	58	HH11162	O-RING ARP568-140	\$2.40	5
CN665	59	CN36315	NOSE	\$245.70	1
CN665	60	EE39602	RUBBER WASHER 7, REPLACES PART#'S EE39604, EE39623	\$0.44	10
CN665	61	BB40443	SCREW M8X28	\$0.44	10
CN665	62	FF41599	STEP PIN 1599	\$2.78	5
CN665	63	FF41837	STEP PIN 1837	\$3.06	1
CN665	64	EE39609	RUBBER WASHER 1.8X6.2	\$0.72	10
CN665	65	CN36336	DOOR	\$80.94	1
CN665	66	EE39814	PLAIN WASHER D	\$0.26	5
CN665	67	JJ10405	E-RING 4	\$0.26	5
CN665	68	CN33679	DOOR LATCH	\$11.14	1
CN665	69	KK33261	SPRING 3261---Replaces Old# KK33169	\$0.36	5
CN665	70	FF31257	STRAIGHT PIN 1257	\$3.22	1
CN665	71	FF41817	STEP PIN 1817	\$10.50	5
CN665	72	CN36349	FEED PAWL	\$32.32	5
CN665	73	KK23710	COMP. SPRING 3710	\$2.00	10
CN665	74	KK23788	COMP. SPRING 3788	\$1.32	10
CN665	75	CN34486	CHECK PAWL	\$1.64	5
CN665	76	FF31264	STRAIGHT PIN 1264	\$2.06	5
CN665	77	KK33259	TORSION SPRING 3259	\$6.06	5
CN665	78	CN36323	COVER	\$4.62	1
CN665	79	CN32170	COLLAR	\$1.14	5
CN665	80	CC49411	ELASTIC STOP NUT M5, REPLACES TA15554	\$0.20	5
CN665	81	CN36317	FEED PISTON	\$16.46	5
CN665	82	HH11107	O RING 1AP18	\$0.44	10
CN665	83	KK23724	COMP SPRING 3724	\$0.80	1
CN665	84	KK23504	SPRING 3504	\$1.68	1
CN665	85	CN37368	FEED PISTON STOP (REPLACES CN31953)	\$1.64	10
CN665	86	CN35285	SPRING COLLER---Replaces Old# CN31756, CN37843	\$3.54	5
CN665	87	JJ22408	RETAINING RING C24	\$0.88	10
CN665	88	BB40405	BOLT 5X25	\$0.20	5
CN665	89	CN35007	ADJUST DIAL, CN37836	\$0.88	5
CN665	90	CN36322	SPACER	\$2.32	1
CN665	91	CN35266	CONTACT ARM C	\$8.00	1
CN665	92	HH11903	O-RING 1A 1.2X4, REPLACES #TA15277	\$0.44	5
CN665	93	JJ10404	RETAINING RING E3.2	\$0.20	5
CN665	94	CN70163	CONTACT ARM B UNIT	\$20.00	1
CN665	95	CN35651	MAGAZINE COVER	\$6.92	1
CN665	96	CN36338	WARNING LABEL (MAGAZINE)	\$2.32	1
CN665	97	CN37428	POST CAP, (REPLACES CN31963)	\$1.66	1
CN665	98	HN10389	NAIL SUPPORT, --- Replaces Old# CN33862	\$8.00	5
CN665	99	CN35388	MAGAZINE	\$15.66	1
CN665	100	CC00401	ELASTIC STOP NUT M5	\$0.44	10
CN665	101	EE31105	PLAIN WASHER 1-6	\$0.26	5
CN665	102	FF41287	STEP PIN 1287	\$1.40	1
CN665	103	CN30601	SPACER	\$0.20	5
CN665	104	KK13051	TENSION SPRING 3051	\$0.74	5
CN665	105	CN37383	RECEIVER SPRING (REPLACES CN30602)	\$0.84	5
CN665	106	CN36321	DUST COVER	\$3.58	
CN665	120	CN33627	PILOT VALVE	\$3.70	
CN665	121	CN35140	CONTACT ARM "A"	\$7.66	
CN665	122	KK23653	COMP SPRING 3653	\$0.46	
CN665	123	CN33723	TRIGGER VALVE STEM	\$2.34	
CN665	124	CN31346	TRIGGER VALVE CAP	\$1.68	

MAX PARTS PRICE LIST

JUNE 2010

Model	Part NO	Part Code	Description	List Price	Ratio
CN665	125	KK33247	SPRING 3247---Replaces Old# KK33145	\$2.82	
CN665	126	TA16138	S.T. LEVER, REPLACES PART# CN33730	\$33.68	
CN665	127	KK33144	TORSION SPRING 3144	\$2.80	
CN665	128	CN35714	TRIGGER (REPLACES CN35648)	\$3.82	
CN665	129	KK23282	SPRING 3282	\$1.00	
CN665	134	FF41839	STEP PIN 1839	\$9.54	
CN665	135	BB40438	SCREW M6X32	\$0.44	
CN665	136	CN36332	HANGER	\$51.60	
CN665	137	CN36333	PROTECTOR "B"	\$18.48	
CN665	200	CN81072	O-RING KIT	\$34.16	
CN665	201	CN81020	TRIGER VALVE KIT CN565D	\$25.52	
CN665	202	CN81012	ARM GUIDE KIT CN565D	\$19.22	
CN665	203	CN80535	SEQUENTIAL TRIP KIT	\$43.86	
CN665	205	CN81068	HANGER KIT	\$52.36	
CN665	206	CN81070	PROTECTOR "B" KIT	\$15.90	

