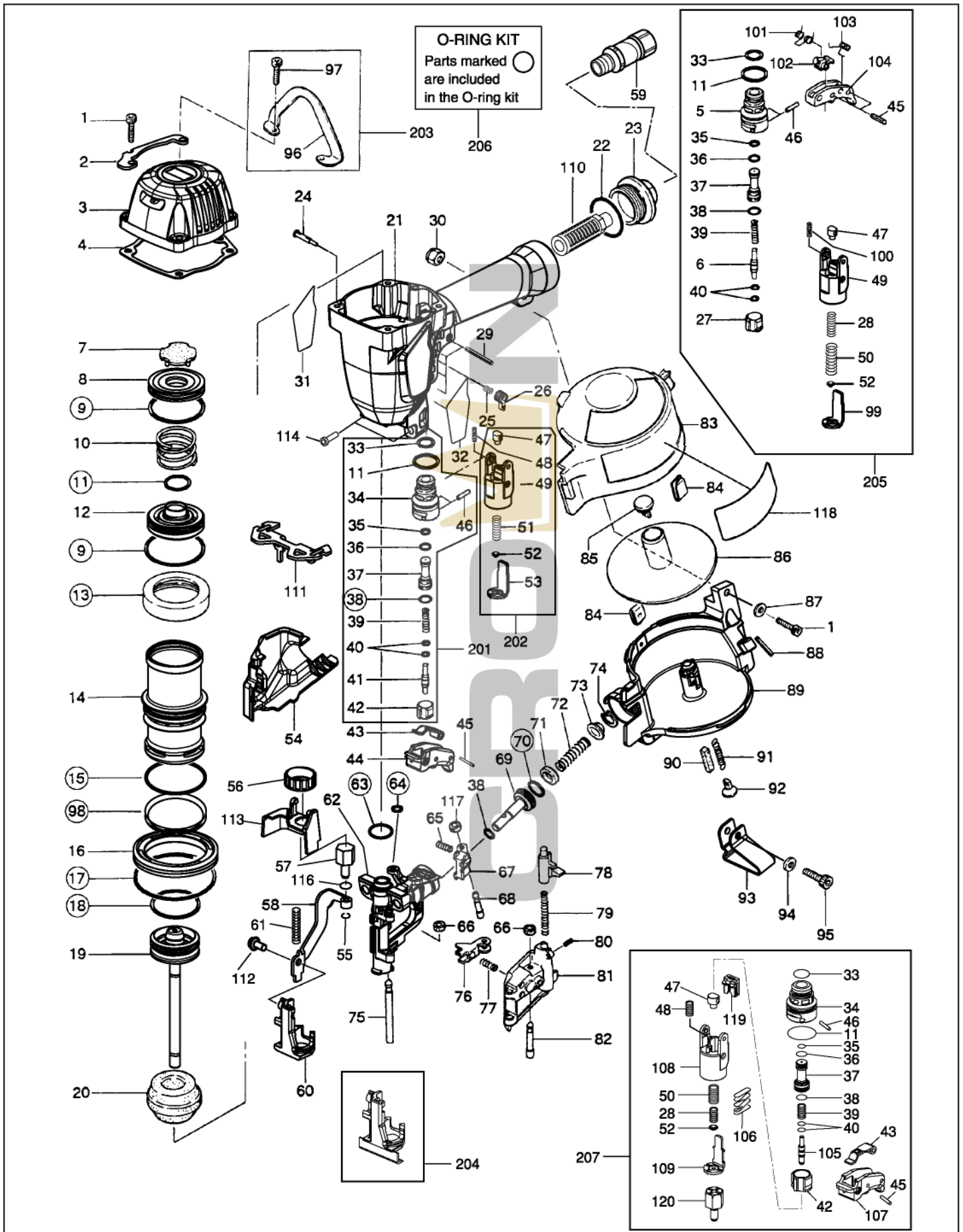


# CN445R

## PNEUMATIC ROOFING COIL NAILER



## MAX PARTS PRICE LIST

JUNE 2010

Model	Part NO	Part Code	Description	List Price	Ratio
CN445R	1	BB40428	SCREW M6X25	\$0.40	10
CN445R	2	CN37853	PROTECTOR A (REPLACES CN37207)	\$3.12	1
CN445R	3	CN37191	CYLINDER CAP -TB- CN37847	\$54.36	1
CN445R	4	CN37855	CYLINDER CAP SEAL (REPLACES CN37209)	\$3.68	10
CN445R	5	CN31323	TRIGGER VALVE HAUSING	\$3.92	
CN445R	6	CN33723	TRIGGER VALVE STEM	\$2.34	
CN445R	7	CN33838	EXHAUST SEAL	\$3.08	10
CN445R	8	CN37216	HEAD VALVE GUIDE	\$2.82	5
CN445R	9	HH11170	O RING 1AP48	\$1.00	10
CN445R	10	KK23934	COMP. SPRING 3934	\$2.32	10
CN445R	11	HH11138	O-RING 1AP20	\$0.44	10
CN445R	12	CN37217	HEAD VALVE PISTON	\$3.12	1
CN445R	13	CN37824	CYLINDER SEAL (REPLACES CN34682)	\$2.46	10
CN445R	14	CN37365	CYLINDER (REPLACES CN37192)	\$38.48	1
CN445R	15	HH12102	O-RING 1AG50	\$1.88	5
CN445R	16	CN37193	CYLINDER RING	\$3.36	1
CN445R	17	HH12106	O-RING 1AG75	\$1.74	5
CN445R	18	HH11808	O-RING P41, REPLACES PART# HH11220	\$6.72	5
CN445R	19	CN70337	MAIN PISTON UNIT	\$72.04	10
CN445R	20	CN34714	BUMPER	\$6.84	10
CN445R	21	CN81237	FRAME (REPLACES CN81155)	\$180.42	1
CN445R	22	HH12118	O-RING 1AG35	\$1.42	5
CN445R	23	CN81224	END CAP (REPLACES TA17032)	\$21.82	1
CN445R	24	CN35075	TRIGGER LOCK LEVER	\$1.10	1
CN445R	25	KK23507	COMPRESSION SPRING 3507	\$0.20	1
CN445R	26	CN35074	TRIGGER LOCK DIAL	\$1.10	1
CN445R	27	CN31346	TRIGGER VALVE CAP	\$1.68	
CN445R	28	KK23735	COMPRESSION SPRING 3735	\$0.36	
CN445R	29	FF21611	ROLL PIN 3X32 AW	\$0.20	10
CN445R	30	CC49408	PLASTIC TOP NUT M6X1	\$0.44	5
CN445R	31	CN37363	LABEL B CN445R (REPLACES CN37220)	\$4.64	1
CN445R	32	CN37362	LABEL A CN445R (REPLACES CN37212)	\$4.64	1
CN445R	33	HH11125	O-RING 1AP12	\$0.44	10
CN445R	34	CN33909	TRIGGER VALVE HOUSING	\$3.70	5
CN445R	35	HH11119	O-RING 1AP6	\$0.44	10
CN445R	36	HH11209	O-RING 1BP7	\$0.44	10
CN445R	37	CN33627	PILOT VALVE	\$3.70	1
CN445R	38	HH11113	O-RING 1AP9	\$0.44	10
CN445R	39	KK24123	COMPRESSION SPRING 4123	\$1.22	5
CN445R	40	HH11901	O-RING 1B1, 4X2,5	\$0.20	10
CN445R	41	CN37215	TRIGGER VALVE STEM	\$4.12	5
CN445R	42	CN33910	TRIGGER VALVE CAP	\$2.04	1
CN445R	43	CN35115	CONTACT LEVER	\$1.82	1
CN445R	44	CN35714	TRIGGER (REPLACES CN35648)	\$1.52	1
CN445R	45	FF22402	SPRING PIN 2X16	\$0.20	5
CN445R	46	FF30161	STRAIGHT PIN 161	\$0.44	5
CN445R	47	CN35059	CONTACT ARM GUIDE "B"	\$3.42	1
CN445R	48	KK23129	COMPRESSION SPRING 3129	\$0.20	5
CN445R	49	CN37842	CONTACT ARM (REPLACES CN35139)	\$2.20	1
CN445R	50	KK23736	COMPRESSION SPRING 3736	\$0.36	
CN445R	51	KK23653	COMP SPRING 3653	\$0.46	5
CN445R	52	CN35004	CONTACT BUMPER	\$0.64	5
CN445R	53	CN37845	CONTACT ARM A (REPLACES CN35780)	\$2.56	1
CN445R	54	CN37210	ARM COVER	\$4.64	1
CN445R	55	JJ10404	RETAINING RING E3.2	\$0.20	10
CN445R	56	CN37836	ADJUST DIAL (REPLACES CN35007)	\$0.88	1

## MAX PARTS PRICE LIST

JUNE 2010

Model	Part NO	Part Code	Description	List Price	Ratio
CN445R	57	CN35006	CONTACT BOLT	\$7.22	1
CN445R	58	CN37194	CONTACT ARM B	\$28.72	1
CN445R	59	TT05423	SWIVEL JOINT	\$44.30	1
CN445R	60	CN70335	CONTACT FOOT UNIT	\$36.68	5
CN445R	61	KK23150	SPRING 3150	\$1.06	1
CN445R	62	CN70336	NOSE UNIT	\$230.72	1
CN445R	63	HH11111	O-RING 1AP14	\$0.44	10
CN445R	64	HH11130	O-RING APS	\$0.20	10
CN445R	65	KK23457	COMPRESSION SPRING 3457	\$0.44	10
CN445R	66	EE39602	RUBBER WASHER 7, REPLACES PART#'S EE39604, EE39623	\$0.44	5
CN445R	67	CN34694	FEED PAWL	\$16.54	1
CN445R	68	FF41846	STEP PIN 1846	\$2.26	1
CN445R	69	CN37826	FEED PISTON (REPLACES CN34695)	\$27.50	1
CN445R	70	HH11107	O RING 1AP18	\$0.44	10
CN445R	71	CN37368	FEED PISTON STOP (REPLACES CN31953)	\$1.64	10
CN445R	72	KK23173	COMPRESSION SPRING 3173	\$0.44	10
CN445R	73	CN37843	SPRING COLLER (REPLACES CN35285)	\$3.54	5
CN445R	74	JJ22408	RETAINING RING C24	\$0.88	10
CN445R	75	FF31250	STRAIGHT PIN 1250	\$1.72	1
CN445R	76	CN37828	CHECK PAWL (REPLACES CN34697)	\$2.04	1
CN445R	77	KK23349	SPRING 3349	\$0.20	5
CN445R	78	CN34710	DOOR LATCH --- Replaces Old# CN31077	\$11.78	1
CN445R	79	KK23402	COMPRESSION SPRING 3402	\$0.40	1
CN445R	80	FF21217	ROLL PIN 3X8	\$0.20	1
CN445R	81	CN34696	DOOR	\$53.02	1
CN445R	82	FF41850	PIN 1850	\$2.30	1
CN445R	83	CN37863	MAGAZINE CAP (REPLACES CN37219)	\$11.80	1
CN445R	84	CN31458	MAGAZINE WEAR CLIP	\$1.32	5
CN445R	85	CN37428	POST CAP, (REPLACES CN31963)	\$1.66	1
CN445R	86	CN37823	NAIL SUPPORT (REPLACES CN34082)	\$3.82	1
CN445R	87	EE31104	PLAIN WASHER 1-6	\$0.20	1
CN445R	88	FF22203	ROLL PIN 4 X 40	\$0.48	1
CN445R	89	CN37862	MAGAZINE (REPLACES CN37218)	\$19.76	1
CN445R	90	CN30601	SPACER	\$0.20	1
CN445R	91	KK13051	TENSION SPRING 3051	\$0.74	1
CN445R	92	CN37383	RECEIVER SPRING (REPLACES CN30602)	\$0.84	1
CN445R	93	CN37829	SHINGLE GAUGE (REPLACES CN34702)	\$3.26	5
CN445R	95	BB40413	SCREW M6X22	\$0.20	1
CN445R	96	CN37206	FRAME HANGER	\$107.68	1
CN445R	97	BB40422	BOLT 6X30	\$0.50	5
CN445R	98	CN35131	CHECK VALVE	\$3.84	1
CN445R	99	CN35140	CONTACT ARM "A"	\$7.66	
CN445R	100	KK23282	SPRING 3282	\$1.00	
CN445R	101	KK33247	SPRING 3247---Replaces Old# KK33145	\$2.82	
CN445R	102	TA16138	S.T. LEVER, REPLACES PART# CN33730	\$33.68	
CN445R	103	KK33144	TORSION SPRING 3144	\$2.80	
CN445R	104	CN35714	TRIGGER (REPLACES CN35648)	\$3.82	
CN445R	105	CN35128	TRIGGER VALVE STEM	\$2.86	
CN445R	106	CN34500	SPRING LEVER	\$2.50	
CN445R	107	CN35001	TRIGGER	\$1.00	
CN445R	108	CN35002	ARM GUIDE	\$2.42	
CN445R	109	CN35003	CONTACT ARM A	\$1.16	
CN445R	110	TA17024	FILTER A---Replaces Old# CN33690	\$11.06	1
CN445R	111	CN37208	PROTECTOR B	\$5.68	1
CN445R	112	BB49815	SCREW M6X12	\$0.26	1

# MAX PARTS PRICE LIST

JUNE 2010

Model	Part NO	Part Code	Description	List Price	Ratio
CN445R	113	CN37211	ADJUST SPACER	\$2.56	1
CN445R	114	BB40444	SCREW M8X30	\$0.56	1
CN445R	116	HH11903	O-RING 1A 1.2X4, REPLACES #TA15277	\$0.44	1
CN445R	117	EE39625	RUBBER WASHER 7 RED	\$1.66	1
CN445R	118	CN37213	CAUTION LABEL	\$2.06	1
CN445R	119	CN35656	LEVER	\$0.88	
CN445R	120	CN37204	CONTACT BOLT	\$58.48	
CN445R	201	CN81163	TRIGGER VAKVE KIT	\$23.10	
CN445R	202	CN81238	ARM GUIDE KIT (REPLACES CN81164)	\$11.54	
CN445R	203	CN81156	FRAME HANGER ASSY.	\$108.46	
CN445R	204	CN70433	VINYL SIDING ATTACHMENT	\$88.74	
CN445R	205	CN80535	SEQUENTIAL TRIP KIT	\$43.86	
CN445R	206	CN81157	O-RING KIT ASSY.	\$27.96	
CN445R	207	CN81159	ANTI-DOUBLE FIRE TRIGGER KIT	\$101.92	

