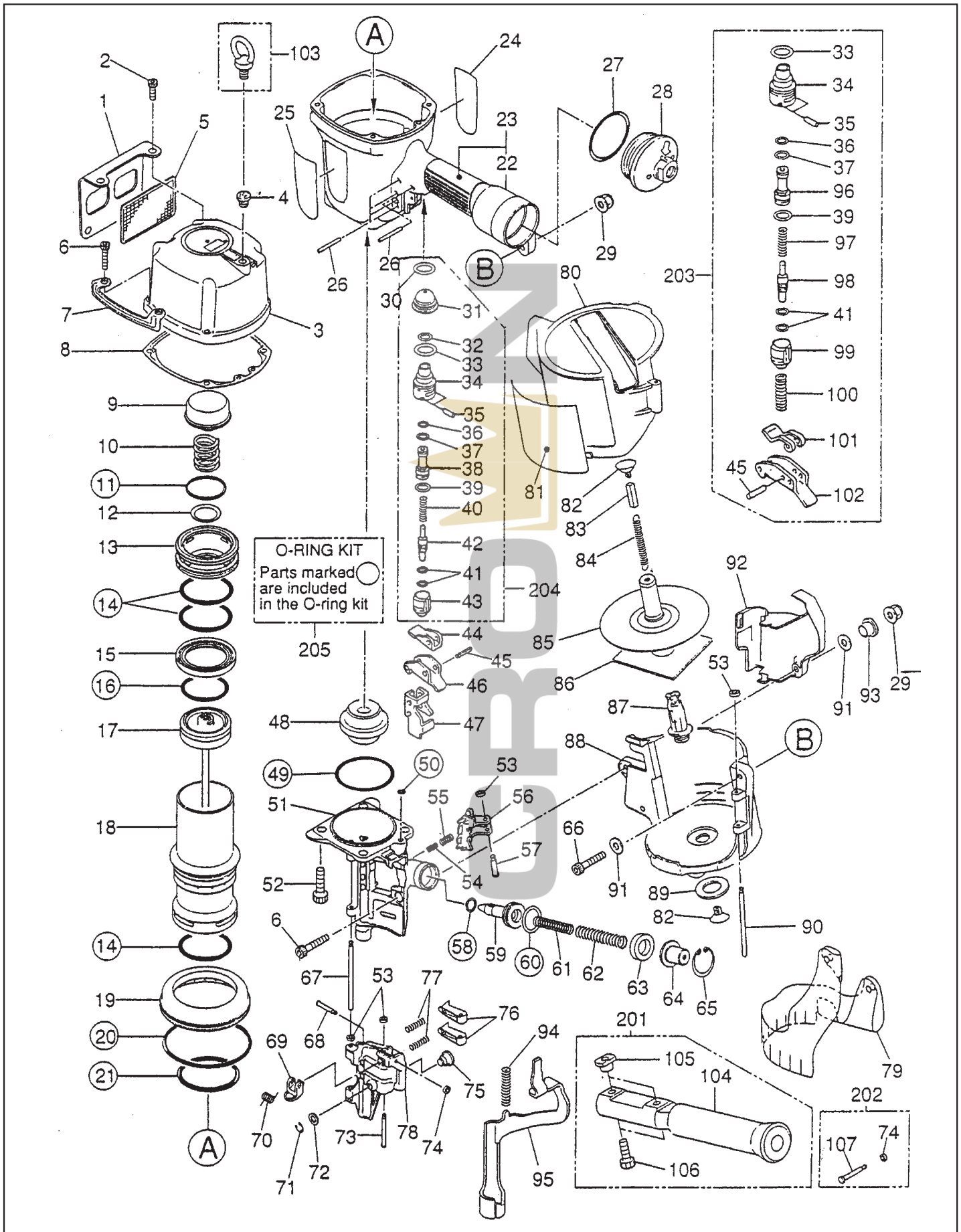


CN100

HEAVY DUTY COIL NAILER



MAX PARTS PRICE LIST

JUNE 2010

Model	Part NO	Part Code	Description	List Price	Ratio
CN100	1	CN36175	EXHAUST COVER	\$4.64	1
CN100	2	BB40415	SCREW M5X10	\$0.20	1
CN100	3	CN70097	CYLINDER CAP UNIT	\$105.52	1
CN100	4	TA12319	GROMMET	\$0.44	1
CN100	5	CN36176	EXHAUST FILER A	\$13.84	1
CN100	6	BB40487	SCREW M6X35	\$0.44	20
CN100	7	CN36192	PROTECTOR	\$5.70	10
CN100	8	CN36171	CYLINDER CAP SEAL	\$27.38	10
CN100	9	CN36173	PISTON STOP	\$21.86	10
CN100	10	KK23821	COMP SPRING 3821	\$3.58	10
CN100	11	HH19195	O-RING 1A3X56,8	\$3.40	10
CN100	12	CN36174	HEAD VALVE WASHER	\$3.84	5
CN100	13	CN36172	HEAD VALVE PISTON	\$61.30	5
CN100	14	HH12906	O-RING A 3.2X69.5	\$3.12	10
CN100	15	CN36169	HEAD VALVE SEAL	\$17.00	10
CN100	16	HH19802	O-RING 5.7X55.4	\$12.34	10
CN100	17	CN70100	MAIN PISTON UNIT	\$92.54	1
CN100	18	CN36209	CYLINDER (REPLACES OLD CN36167)	\$158.32	1
CN100	19	CN36208	CYLINDER RING,---Replaces Old# CN36168	\$73.20	1
CN100	20	HH14161	O-RING AS568-244	\$4.62	5
CN100	21	HH12119	O-RING 1AP70	\$3.82	5
CN100	23	CN70188	FRAME	\$303.80	1
CN100	24	CN35636	WARNING LABEL (FRAME)	\$1.36	1
CN100	25	CN36216	LABEL	\$2.32	1
CN100	26	FF21611	ROLL PIN 3X32 AW	\$0.20	1
CN100	27	HH12111	O-RING 1AG45	\$1.42	1
CN100	28	KN81039	END CAP (REPLACES KN11247)	\$23.40	1
CN100	29	CC00402	ELASTIC STOP NUT M6X1	\$0.44	1
CN100	30	HH11159	O-RING ARP568-016	\$1.20	10
CN100	31	CN37529	TRIGGER VALVE CAGE (REPLACES CN31661)	\$0.92	1
CN100	32	HH11151	O-RING ARP 568-013 (CN70)	\$0.88	10
CN100	33	HH11138	O-RING 1AP20	\$0.44	10
CN100	34	CN32247	TRIGGER VALVE HOUSING	\$6.02	1
CN100	35	FF30161	STRAIGHT PIN 161	\$0.44	1
CN100	36	HH11119	O-RING 1AP6	\$0.44	10
CN100	37	HH11209	O-RING 1BP7	\$0.44	10
CN100	38	CN31589	PILOT VALVE	\$4.60	5
CN100	39	HH11113	O-RING 1AP9	\$0.44	10
CN100	40	KK24123	COMPRESSION SPRING 4123	\$1.22	1
CN100	41	HH11901	O-RING 1B1, 4X2,5	\$0.20	20
CN100	42	CN31347	TRIGGER VALVE STEM	\$1.44	10
CN100	43	CN31346	TRIGGER VALVE CAP	\$1.68	10
CN100	44	CN37424	CONTACT LEVER (REPLACES TA10506)	\$2.70	10
CN100	45	FF21220	ROLL PIN 3X16	\$0.20	10
CN100	46	CN37423	TRIGGER (REPLACES TA10505)	\$2.48	10
CN100	47	CN35855	ARM GUIDE, REPLACES PART# CN31659, CN37553	\$6.78	1
CN100	48	CN36188	BUMPER	\$22.36	5
CN100	49	HH14913	O-RING AS568-151	\$3.60	5
CN100	50	HH11105	O-RING 1AP7	\$0.20	5
CN100	51	CN70200	NOSE (CN100)	\$416.36	1
CN100	52	BB40453	BOLT 10X30	\$1.06	20
CN100	53	EE39602	RUBBER WASHER 7, REPLACES PART#'S EE39604, EE39623	\$0.44	5
CN100	54	KK23788	COMP. SPRING 3788	\$1.32	5
CN100	55	KK23710	COMP. SPRING 3710	\$2.00	5
CN100	56	CN36181	FEED PAWL	\$60.52	1

MAX PARTS PRICE LIST

JUNE 2010

Model	Part NO	Part Code	Description	List Price	Ratio
CN100	57	FF42216	STEP PIN 2216	\$3.26	1
CN100	58	HH11132	O-RING 1AP10A	\$0.44	5
CN100	59	CN36182	FEED PISTON	\$40.48	1
CN100	60	HH11143	O-RING 1AP21	\$0.64	10
CN100	61	KK23832	COMP SPRING 3832	\$3.12	5
CN100	62	KK23517	COMP SPRING 2517	\$1.06	5
CN100	63	CN32762	FEED PISTON STOP	\$2.28	1
CN100	64	CN36194	SPRING COLLAR	\$16.96	1
CN100	65	JJ22407	RETAINING RING C26	\$1.54	5
CN100	66	BB40469	SCREW M6X40	\$0.56	5
CN100	67	FF31285	STRAIGHT PIN 1285	\$6.40	1
CN100	68	FF41599	STEP PIN 1599	\$2.78	1
CN100	69	CN36195	DOOR LATCH	\$25.38	1
CN100	70	KK33261	SPRING 3261---Replaces Old# KK33169	\$0.36	5
CN100	71	JJ10405	E-RING 4	\$0.26	5
CN100	72	EE39814	PLAIN WASHER D	\$0.26	5
CN100	73	FF41261	PIN 1261	\$13.32	1
CN100	74	EE39609	RUBBER WASHER 1.8X6.2	\$0.72	5
CN100	75	FF41837	STEP PIN 1837	\$3.06	1
CN100	76	CN37523	CHECK PAWL (Replaces CN30584)	\$26.22	5
CN100	77	KK23109	COMPRESSION SPRING 3109	\$0.44	5
CN100	78	CN36183	DOOR	\$118.04	1
CN100	79	CN36191	DUST COVER	\$4.90	10
CN100	80	CN36186	MAGAZINE CAP	\$17.56	1
CN100	81	CN36190	WARNING LABEL	\$2.84	1
CN100	82	CN37383	RECEIVER SPRING (REPLACES CN30602)	\$0.84	1
CN100	83	CN30601	SPACER	\$0.20	1
CN100	84	KK13144	TENSION SPRING 3144	\$1.20	1
CN100	85	CN70104	NAIL SUPPORT UNIT	\$37.92	1
CN100	86	CN31578	RUBBER PLATE	\$3.04	1
CN100	87	CN36198	MAGAZINE POST	\$9.76	1
CN100	88	CN36185	MAGAZINE	\$28.76	1
CN100	89	EE39603	POST RETAINER---Replaces Old# EE39606	\$0.94	5
CN100	90	FF41560	STEP PIN 1560	\$8.44	1
CN100	92	CN36193	CONTACT ARM COVER	\$7.96	1
CN100	93	CN32170	COLLAR	\$1.14	1
CN100	94	KK23820	COMP SPRING 3820	\$1.78	5
CN100	95	CN36184	CONTACT ARM	\$53.16	5
CN100	96	CN33627	PILOT VALVE	\$3.70	
CN100	97	KK23129	COMPRESSION SPRING 3129	\$0.20	
CN100	98	CN31715	TRIGGER VALVE STEM	\$5.44	
CN100	99	CN31716	TRIGGER VALVE CAP	\$25.54	
CN100	100	KK23228	COMPRESSION SPRING 3228	\$0.98	
CN100	101	CN34300	CONTACT LEVER	\$23.44	
CN100	102	CN30276	TRIGGER	\$4.52	
CN100	103	BB10401	HANGER	\$6.22	
CN100	104	CN80525	GRIP ASY,---Replaces Old# CN35643	\$57.00	
CN100	105	CN35641	SPECIAL NUT	\$10.32	
CN100	106	BB40411	SCREW M6X20, NEW# BB40494	\$0.20	
CN100	107	FF41842	STEP PIN 1842	\$11.06	
CN100	201	CN80525	GRIP ASY,---Replaces Old# CN35643	\$125.24	
CN100	202	TA81014	STEP PIN KIT	\$11.56	
CN100	203	CN80273	ST KIT	\$75.38	
CN100	204	XX70026	TRIGGER VALVE ASSY	\$26.86	
CN100	205	CN81061	O-RING KIT (CN100)	\$37.42	