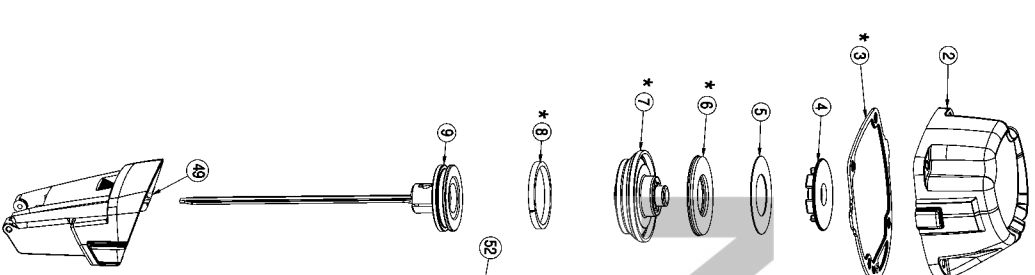
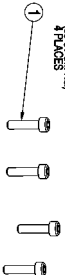


62-20 INLBS
OF TORQUE
IN 2 PLACES
(28-32 CM-KG)



*15



*16



*17



*18



*19



*20



*21



*22



*23



*24



*25

38-45 INLBS
OF TORQUE
(42-52 CM-KG)



*36



*37



*38



*39



*40



*41



*42



*43



*44



*45



*46

28-30 INLBS
OF TORQUE
(32-35 CM-KG)



*47



*48



*49



*50



*51



*52



*53



*54



*55



*56



*57

28-30 INLBS
OF TORQUE
(32-35 CM-KG)



*58



*59



*60



*61



*62



*63



*64



*65



*66



*67



*68

28-30 INLBS
OF TORQUE
(32-35 CM-KG)



*69



*70



*71



*72



*73



*74



*75



*76



*77



*78



*79

28-30 INLBS
OF TORQUE
(32-35 CM-KG)



*80



*81



*82



*83



*84



*85



*86



*87



*88



*89



*90

28-30 INLBS
OF TORQUE
(32-35 CM-KG)



*91



*92



*93



*94



*95



*96



*97



*98



*99



*100

28-30 INLBS
OF TORQUE
(32-35 CM-KG)



*101



*102



*103



*104



*105



*106



*107



*108



*109



*110

28-30 INLBS
OF TORQUE
(32-35 CM-KG)



*111



*112



*113



*114



*115



*116



*117



*118



*119



*120

BTFFP72156
SMART POINT™ 15 GA "FN" STYLE FINISH NAILER
CLAVADORA CON ACABADO DE ESTILO
SMART POINT™ DE CALIBRE 15 "FN"
CLOUSEUSE DE FINITION SMART POINT™C TYPE
« FN » DE CALIBRE 15

* Included in Rebuild Kit

Parts List for BTFP72156 Type 1

Item Number	Part Number	Description	Qty Required
1	MSC5080-20	SCREW-SOC HD. CAP M5	9
2	9R203925	FRAME CAP	1
3	9R203928	FRAME/CAP GASKET	1
4	9R188810	PLAST RIB FRAME CAP	1
5	9R188852	PLATE-HEAD VALVE	1
6	9R188849	HEAD VALVE SEAL	1
7	9R188859	HEAD/VALVE ASSY.	1
8	9R188846	PISTON RING	1
9	9R203772	PISTON/DRIVER ASSY	1
10	9R188809	CYLINDER	1
11	9R188836	O-RING	2
12	9R188835	CHECK SEAL	1
13	9R188807	BUMPER- LOWER	1
14	9R188847	DRIVER GUIDE	1
15	9R188825	BLOWER TUBE	1
16	166797	O-RING-.056X.060 NBR	1
17	9R203750	FRAME	1
18	9R188827	GASKET	1
19	9R188814	END CAP	1
20	9R195624	QUICK CONNECT	1
21	9R188829	HOUSING HOOK	1
22	9R188830	SEAT PLATE-HOOK	1
23	9R188815	HOOK	1
24	174309	O-RING-1.049X.103	1
25	9R188812	CAP-HOOK	1
26	9R188811	C-RING	1
27	9R188828	COVER	1

COPYRIGHT© 2005. All Rights Reserved.

Parts list, pricing, and availability subject to change. Please visit www.dewaltservicenet.com for current parts information.

Parts List for BTFP72156 Type 1

Item Number	Part Number	Description	Qty Required
28	TVA17	TRIGGER VALVE	1
29	180475	PIN-SPRING-M3X20MM	1
30	9R203788	SPRING PIN	3
31	9R195255	MODE SWITCH PIN	1
32	9R188850	MODE SPRING	1
33	9R200515	E-RING	1
34	9R195254	MODE SWITCH BUTTON	1
35	9R198788	SET SCREW	1
36	9R196671	TRIGGER LOCK PIN	1
37	9R196690	O-RING	2
38	9R188822	LOCK BUTTON	1
39	9R188837	SET SCREW	1
40	9R188832	BLOWER SPRING	1
41	9R188823	STEM BLOWER	1
42	9R188768	O-RING	1
43	MRG002514	O-RING-.098X.055	1
44	9R188824	BLOWER BUTTON	1
45	9R201813	CHECK PAWL	1
46	9R201809	SPRING, CHECK PAWL	2
47	MHE5080-100	NUT-NYLON M5X.80	3
48	MSC5080-22	SCREW-SHCS-M5X0.8X22	1
49	9R203763	NOSE COVER	1
50	9R188794	ASSEMBLY-PINCH PLATE	1
51	9R203909	CONTACT FOOT-NO MAR	3
52	9R203775	TRIP ASSEMBLY	1
53	9R203787	CONTACT ARM SPRING	1
54	9R205614	LARGE TRIGGER ROCKER	1

COPYRIGHT© 2005. All Rights Reserved.

Parts list, pricing, and availability subject to change. Please visit www.dewaltservicenet.com for current parts information.

Parts List for BTFP72156 Type 1

Item Number	Part Number	Description	Qty Required
55	9R205607	TRIGGER SPRING	1
56	9R205611	TRIGGER ASSEMBLY	1
57	9R196682	TRIGGER PIN	1
58	391814-C3D1	GROMMET	1
59	9R203784	UPPER CONTACT ASSEM	1
60	9R201812	FLAT TRIGGER BRKT	2
61	9R205579	EXTENDED TRIP GUIDE	1
62	9R198779	ADJUSTING DIAL	1
63	9R203773	CONTACT ARM COVER	1
64	9R203757	FRAME COVER	1
65	MSC6100-25	SCREW-SHCS-M6X1.00X2	2
66	9R203761	NOSE	1
67	103858	PIN-SPRING-4X20MM	1
68	9R203790	SPRING PIN	1
69	9R203759	NOSE	1
70	9R188771	SCREW- SOC. HD. CAP	1
71	180569	WASHER-PLAIN-D5X10X1	3
72	9R188797	MAGAZINE-UPPER	1
73	9R188798	LINER-NAIL (15GA)	1
74	9R188801	NAIL STOP	1
75	9R203778	PUSHER ASSEMBLY	1
76	9R188840	MAGAZINE ASSY.	1
77	9R188804	O.C. GAUGE	1
78	181920	PIN SPRING	1
79	9R203923	CONTACT FOOT ADAPTOR	1
80	9R188831	CONSTANT SPRING	1
82	180296	LABEL-WARNING	1

COPYRIGHT© 2005. All Rights Reserved.

Parts list, pricing, and availability subject to change. Please visit www.dewaltservicenet.com for current parts information.

Parts List for BTFP72156 Type 1

Item Number	Part Number	Description	Qty Required
83	180582	LABEL-WARNING	1
84	9R205591	PRODUCT/FAST. LABEL	1
876	TVA15RF	ACTUATOR ASSY.	1
876	N62FNB-RK	REBUILD KIT	1



COPYRIGHT© 2005. All Rights Reserved.

Parts list, pricing, and availability subject to change. Please visit www.dewaltservicenet.com for current parts information.