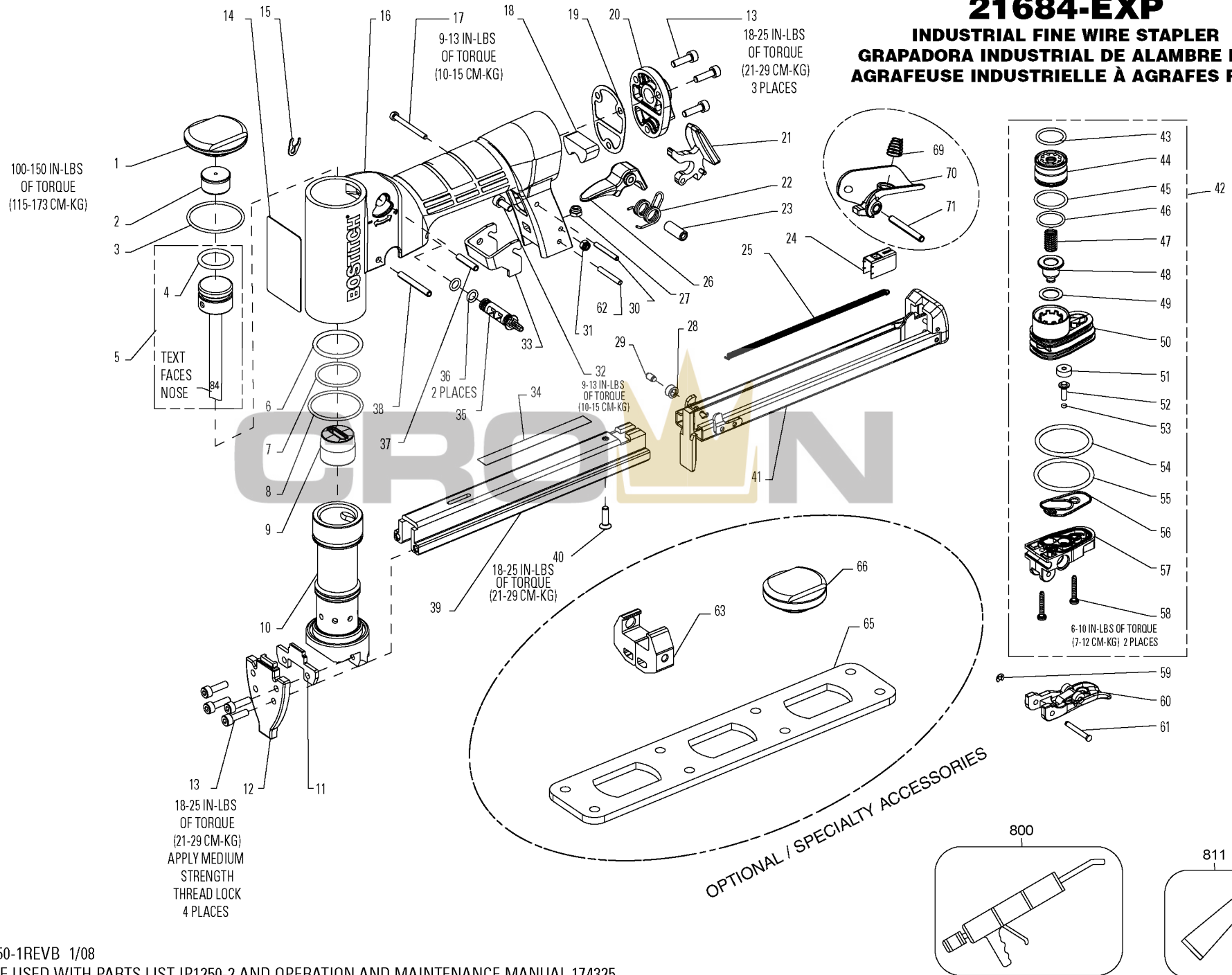


21684B, 21684B-E 21684-EXP

INDUSTRIAL FINE WIRE STAPLER
GRAPADORA INDUSTRIAL DE ALAMBRE FINO
AGRAFEUSE INDUSTRIELLE À AGRAFES FINES



Parts List for 21684B Type 0

| Item Number | Part Number | Description | Qty Required |
|-------------|-------------|----------------------|--------------|
| 1 | 174288 | CAP | 1 |
| 2 | 174289 | BUMPER-PISTON STOP | 1 |
| 3 | 100353 | O-RING-1.301X.070 | 1 |
| 4 | 174308 | O-RING-.701X.094 | 1 |
| 5 | 177717 | ASSEMBLY-DRIVER/PIST | 1 |
| 6 | 174309 | O-RING-1.049X.103 | 1 |
| 7 | 174310 | O-RING-.989X.070 | 1 |
| 8 | 851349 | O-RING-1.239X.070 | 1 |
| 9 | 174100 | BUMPER | 1 |
| 10 | 174098 | SLEEVE-CYLINDER | 1 |
| 11 | 174099 | PLATE-DRIVER GUIDE | 1 |
| 12 | 177702 | NOSE | 1 |
| 13 | 174306 | SCREW-SHCS-M4X0.7X14 | 7 |
| 14 | 159831 | LABEL-WARNING | 1 |
| 15 | 174290 | RETAINER-CLIP | 1 |
| 16 | 174265 | FRAME | 1 |
| 17 | 174274 | SCREW-SHCS-M3X0.5X32 | 1 |
| 18 | 174266 | MUFFLER | 1 |
| 19 | 174295 | GASKET-END CAP | 1 |
| 20 | 174296 | CAP-END | 1 |
| 21 | 174273 | LATCH | 1 |
| 22 | 174301 | SPRING-TORSION | 1 |
| 23 | 174302 | BUSHING-SPRING | 1 |
| 24 | 177724 | PUSHER | 1 |
| 25 | 174291 | SPRING-EXTENSION | 1 |
| 26 | 174297 | LATCH-INSIDE | 1 |
| 27 | MHE4070-100 | ELASTIC STOP NUT-M4 | 1 |

COPYRIGHT© 2005. All Rights Reserved.

Parts list, pricing, and availability subject to change. Please visit www.dewaltservicenet.com for current parts information.

Parts List for 21684B Type 0

| Item Number | Part Number | Description | Qty Required |
|-------------|-------------|----------------------|--------------|
| 28 | 174293 | ROLLER | 1 |
| 29 | 177741 | PIN-ROLLER | 1 |
| 30 | 174303 | PIN-COILED-M3X22 | 1 |
| 31 | MHE3050-100 | NUT-NYLON M3X.50 | 1 |
| 32 | MSC4070-10 | SCREW-SHCS-M4X0.70X1 | 1 |
| 33 | 174264 | STOP PLATE | 1 |
| 34 | 174319 | LABEL-21684B | 1 |
| 35 | 174287 | VALVE-ENERGY CONTROL | 1 |
| 36 | 174311 | O-RING-.217X.059 | 2 |
| 37 | 174304 | PIN-COILED-M4X18 | 1 |
| 38 | 174305 | PIN-COILED-M4X30 | 1 |
| 39 | 177731 | MAGAZINE | 1 |
| 40 | 174307 | SCREW-SFHCS-M4X0.7X1 | 1 |
| 41 | 177710 | ASSEMBLY-SLIDING MAG | 1 |
| 42 | TVA13 | ASSEMBLY-TRIGGER VAL | 1 |
| 43 | 86459 | O-RING | 1 |
| 44 | 174278 | HEAD VALVE | 1 |
| 45 | 174312 | O-RING-.700X.072 | 1 |
| 46 | 102163 | O-RING-.591X.059 | 1 |
| 47 | 174280 | SPRING-COMPRESSION | 1 |
| 48 | 174279 | SEAL-EXHAUST | 1 |
| 49 | 174281 | WASHER-SPECIAL | 1 |
| 50 | 174277 | HOUSING-HEAD VALVE | 1 |
| 51 | 174282 | SEAL-TRIGGER STEM | 1 |
| 52 | 174283 | STEM | 1 |
| 53 | 174313 | O-RING-.042X.050 | 1 |
| 54 | 108467 | O-RING-1.237X.103 | 1 |

COPYRIGHT© 2005. All Rights Reserved.

Parts list, pricing, and availability subject to change. Please visit www.dewaltservicenet.com for current parts information.

Parts List for 21684B Type 0

| Item Number | Part Number | Description | Qty Required |
|-------------|-------------|----------------------|--------------|
| 55 | 100817 | O-RING-1.299X.103 | 1 |
| 56 | 174284 | SEAL-VALVE | 1 |
| 57 | 174276 | HOUSING-TRIGGER | 1 |
| 58 | 174285 | SCREW-M3X16 | 2 |
| 59 | 174298 | RETAINER-E-RING | 1 |
| 60 | 174269 | ASSEMBLY-TRIGGER | 1 |
| 61 | 174268 | PIN-SPECIAL | 1 |
| 62 | 174326 | PIN-SOLID-M3X22 | 1 |
| 63 | 174267 | ASSEMBLY-SKIRT GAUGE | 1 |
| 65 | 174322 | WRENCH | 1 |
| 66 | 174323 | CAP-HEAVY | 1 |
| 69 | 174300 | SPRING-COMPRESSION-C | 1 |
| 70 | 174299 | TRIGGER-SECOND | 1 |
| 71 | 177685 | PIN-SPRING-4X32MM | 1 |
| 800 | 100653 | LUBE (2CC) | 1 |
| 800 | 100679 | LUBE (1LB.CAN) | 1 |
| 811 | 851385 | LOCTITE | 1 |

COPYRIGHT© 2005. All Rights Reserved.

Parts list, pricing, and availability subject to change. Please visit www.dewaltservicenet.com for current parts information.