

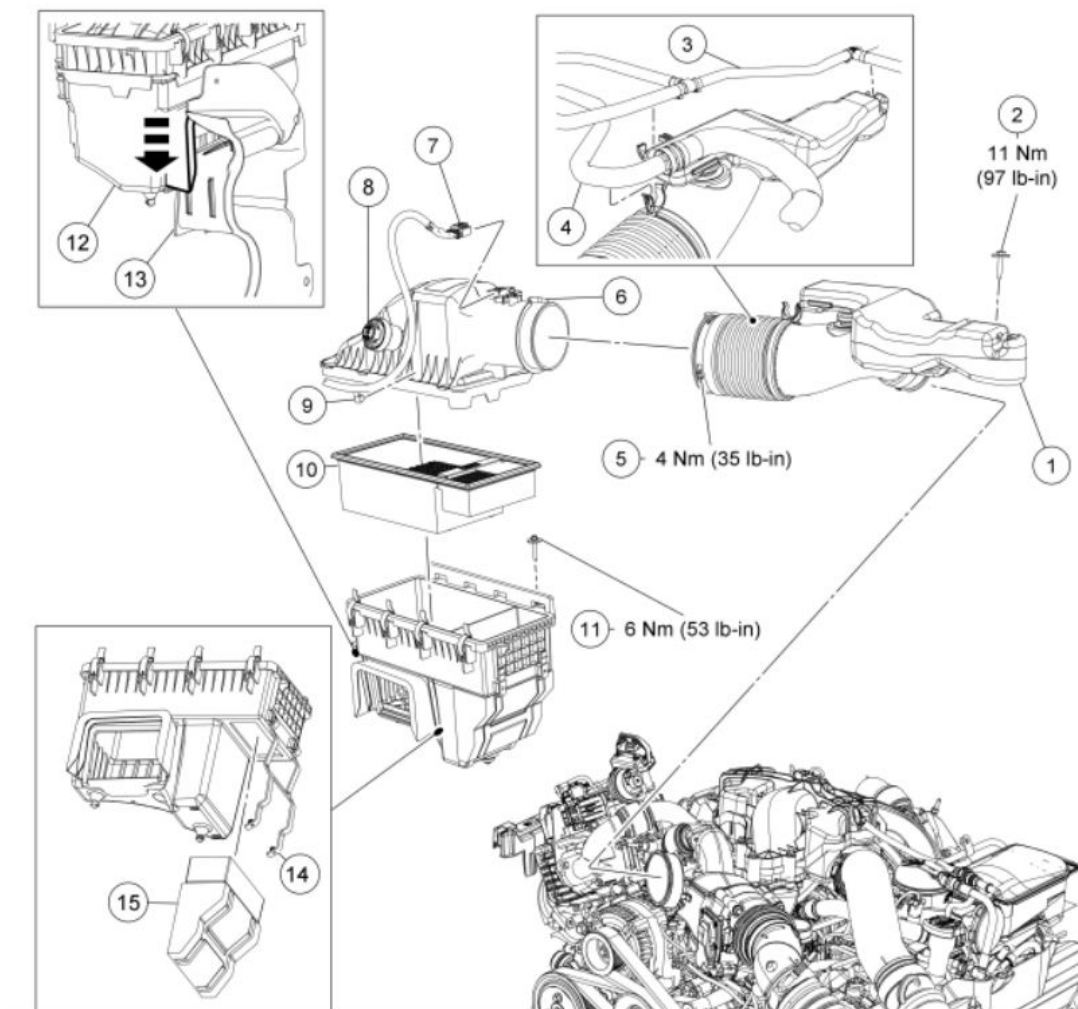


# SPE Air Intake System

2011-2016 6.7L Superduty

## Installation Instructions:

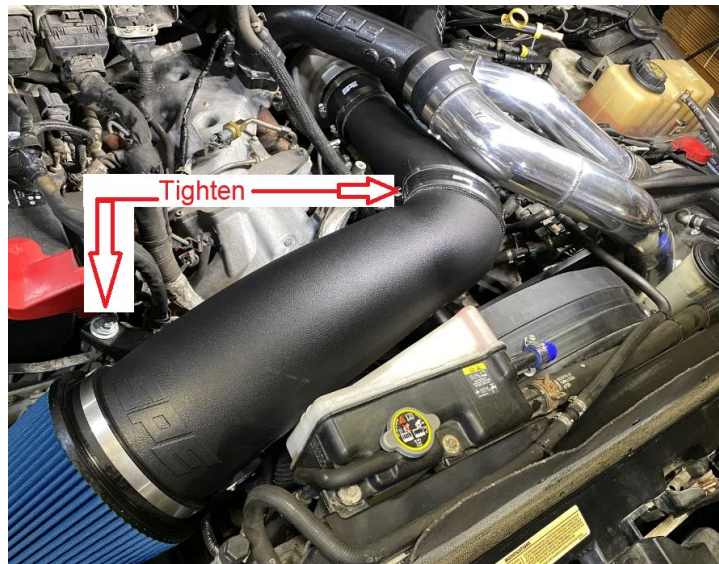
1. Remove Factory intake setup including the air box.



2. Save the metal insert and bolt from the airbox where it mounts to the battery box. Remove the MAF sensor and retain the bolts.
3. Put the insert into the mounting hole on the new intake.



4. Install the MAF sensor with original bolts. The sensor will only fit one way.
5. Install the filter onto the end of the SPE Intake. Install the silicone coupler and scroll clamps loosely on the oval end.
6. Install the intake assembly on the truck, tighten the intake mounting bolt and scroll clamps.



\*\*\*\*\*Tuning will be required to optimize the intake due to the large diameter. Contact SPE for an update if you're already an SPE Customer. If not contact your tuner.

\*\*\*\*\* This is designed as a performance intake system.