

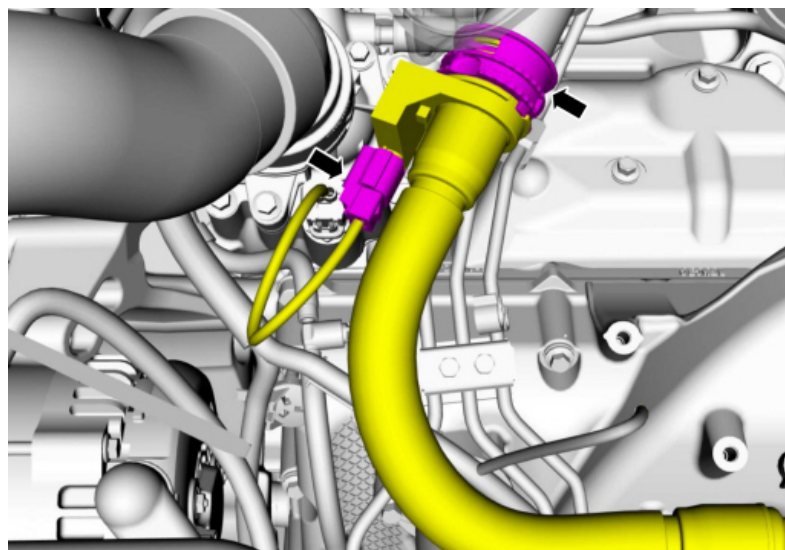


6.7 Powerstroke Recirculating CCV Instructions



1. Loosen the clamp and disconnect the Charge Air Cooler (CAC) inlet tube from the CAC and position aside by twisting.
 - To install, tighten to (100lb-in).

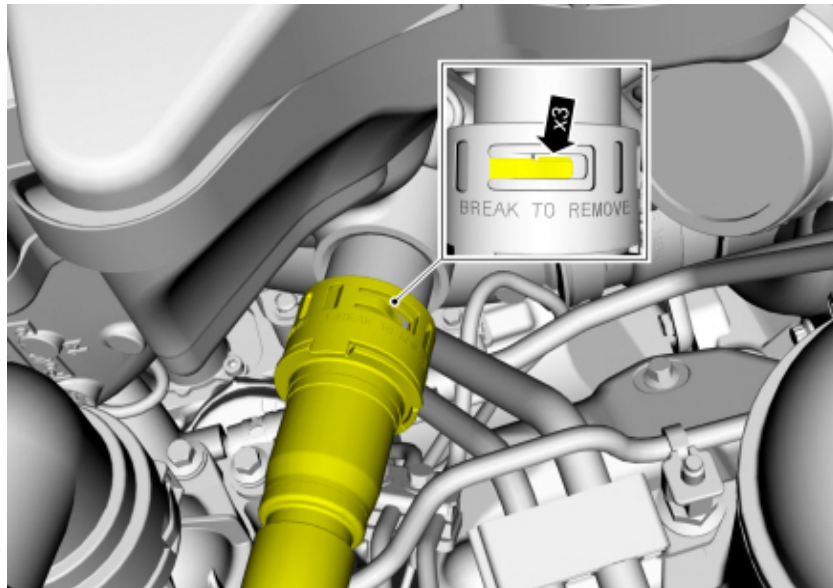
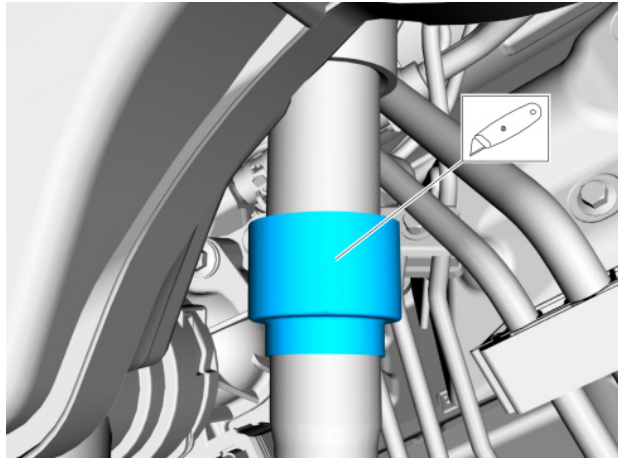
2. Disconnect the crankcase vent oil separator outlet tube sensor electrical connector.
(If applicable)



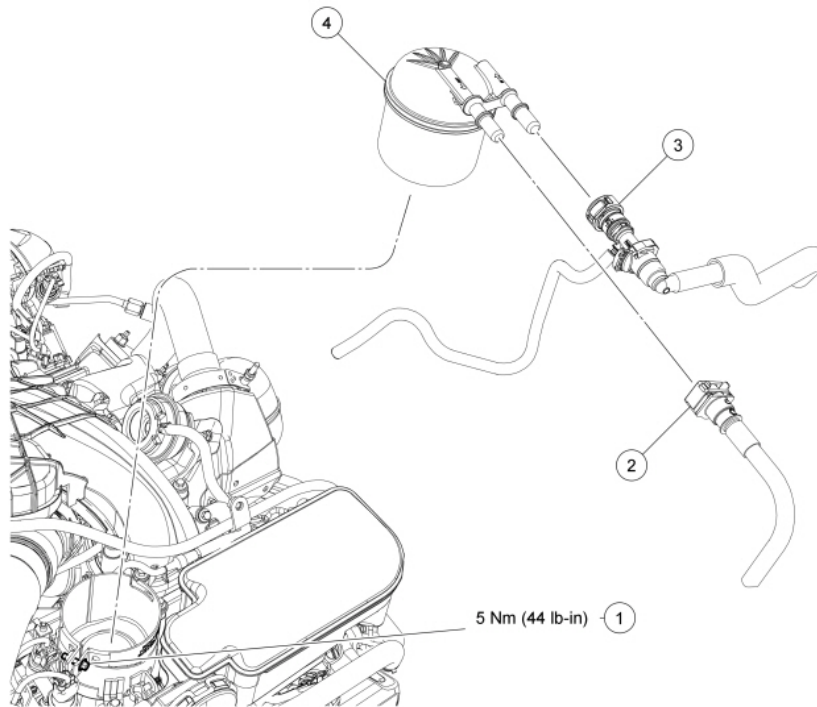
⚠ **RELEASE THE FUEL PRESSURE!! ⚠**

3. Disconnect the crankcase vent oil separator outlet hose from the lower intake manifold by turning the release ring counterclockwise.

*** NOTE: Some models vary depending on the production date. Here is another variant:

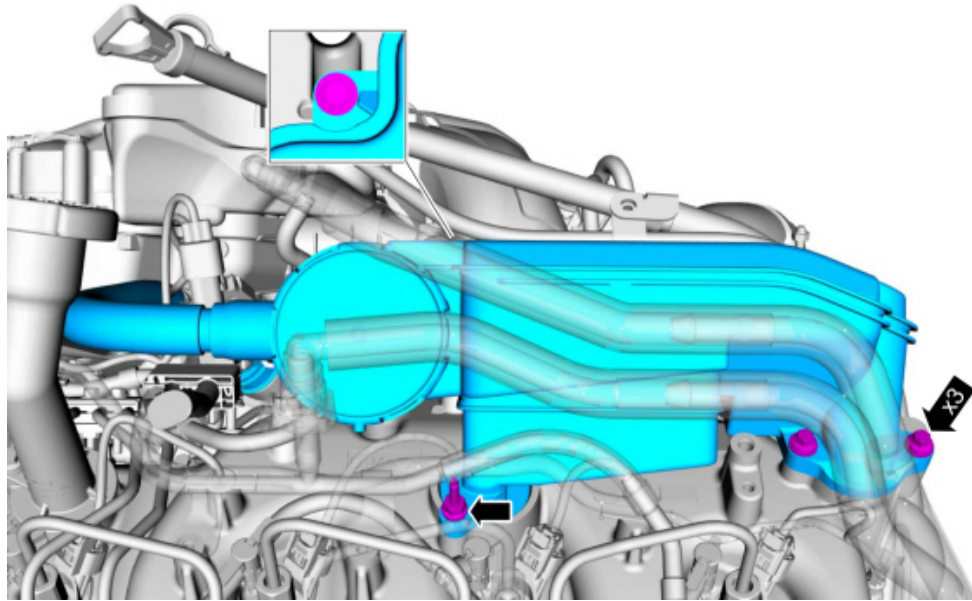


! ****RELEASE THE FUEL PRESSURE!**** **!**



4. Disconnect the inlet and outlet fuel filter quick connect couplings.
5. Remove the bolts from the LH fuel supply tube.
 - To install, tighten to 10 Nm (89 lb-in).
6. Remove the stud bolt first, and then the 3 bolts, and the fuel filter and bracket assembly.
7. Detach the tube retainer from the fuel filter bracket assembly.
 - To install, tighten to 10 Nm (89 lb-in).
8. Remove the wiring harness retainer from the crankcase vent oil separator stud bolt. Disconnect the crankcase pressure sensor (if applicable).

! **RELEASE THE FUEL PRESSURE!! *



9. Remove the 3 bolts, stud bolt, and the crankcase vent oil separator assembly.



10. Clean the valve cover and install your SPE Recirculating CCV lower body with the provided o-ring and M6 bolt. Install the rear 2 bolt 3/4 hose venturi adapter flange to the rearmost hole on the valve cover with the provided bolts make sure to install the provided o-ring. Install the P-trap style hose. Use the provided zip ties on the hose to clamp the hose to the barbs.

! **RELEASE THE FUEL PRESSURE!! *

****Note:** The P-hose will need to be trimmed on the flange side. If you're using an internal catch can in conjunction with it.



11. Install the stainless screen filter assembly, then place the upper lid and bolt down with the single M8 bolt. All of these components will only orientate one way. The lid will lock into the lower half via the alignment step.

*******Note:** Make sure the perimeter o- ring is installed and flat in the lower body half.

! **RELEASE THE FUEL PRESSURE! !**



12. Install the outlet hose to the lower intake manifold. If your vehicle has the proximity sensor, cut the factory hose as shown below and trim the SPE hose so that it can be pushed over the factory fitting and connected to the upper lid without kinking. Clamp the hose with the supplied zip ties.

***Note: On trucks utilizing the electrical connector on the factory hose, it is best to retain it by cutting it as shown in the pic below and installing the hose over top of the plastic. Trimming of the SPE hose will be required.



12. Install other parts (fuel filter, intercooler pipe, etc.) in reverse of removal.