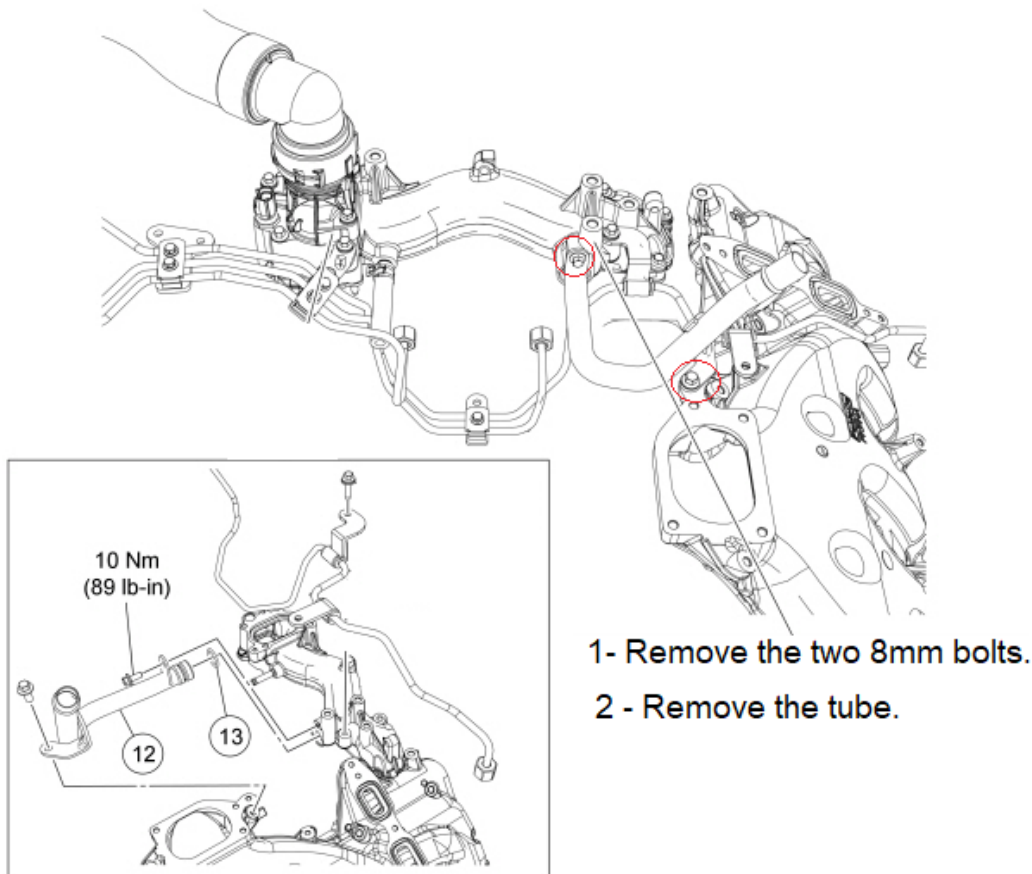


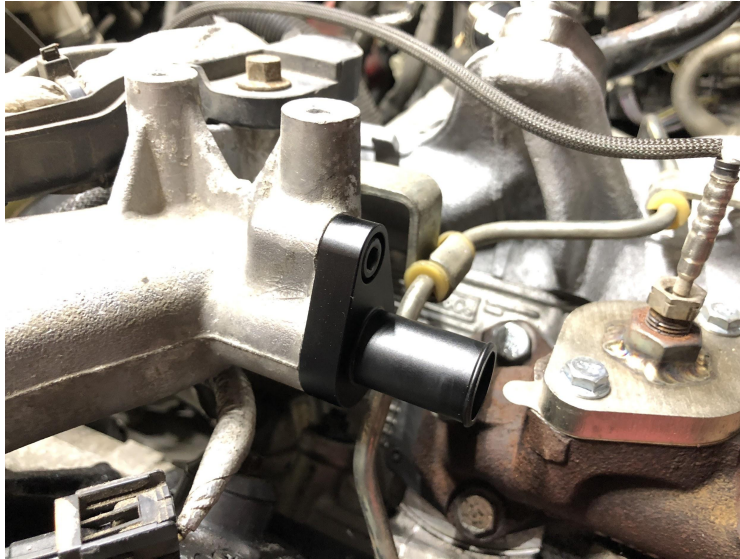


SPE MOTORSPORT COOLANT HOSE REROUTE KIT- FITS 11-21 6.7L POWERSTROKE

1. Drain the cooling system. The petcock is located on the main radiator at the bottom on the driver side.
2. Remove the heater inlet tube. Remove the bolts and the quick disconnect.



3. Assemble the o-ring onto the heater tube adapter fitting, lubricate the o-ring, and install the fitting with the included hardware (tighten to 89 lb-in)



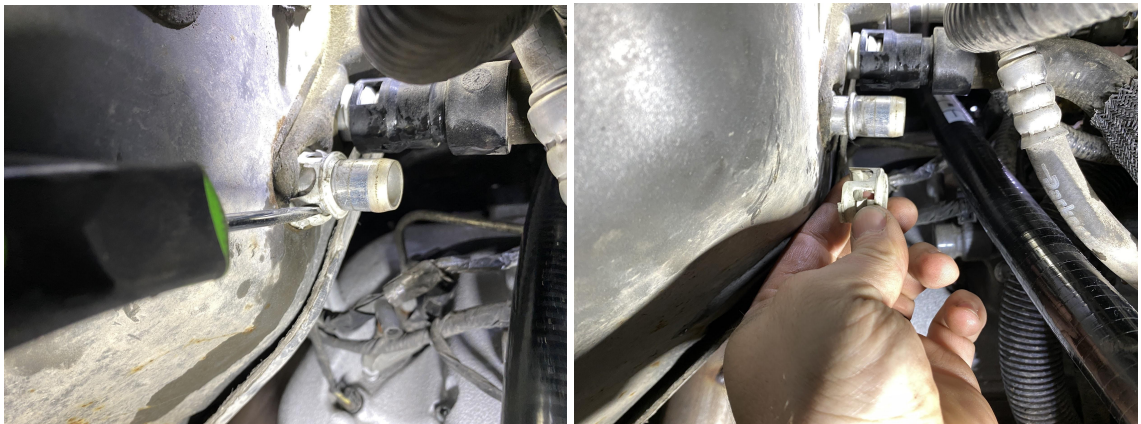
4. Install the supplied silicone hose and #10 clamp loosely on the fitting as shown.



5. Remove the heater hose rubber tube. Disconnect the quick disconnect end from the heater core. Push in on the elbow fitting and squeeze the white tabs then pull back on the fitting. **Note:** This may be easier with the inner fender removed.



6. Remove the white retaining clip left behind by the factory quick connect.



7. Install the supplied 90 degree quick connect adapter as shown. Trim the hose to fit install on adapter with the supplied #12 clamp. Tighten clamps.



8. Remove the radiator degas hose T assembly. Install the included hose, then route and tighten clamps as shown below.

