

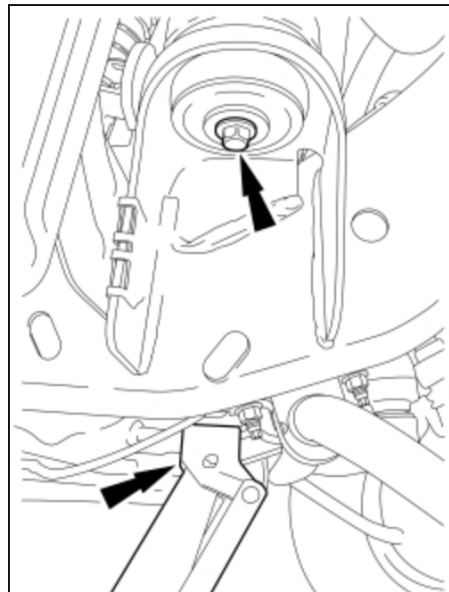


SPE 2008-2016 Superduty Cab Mount Instructions

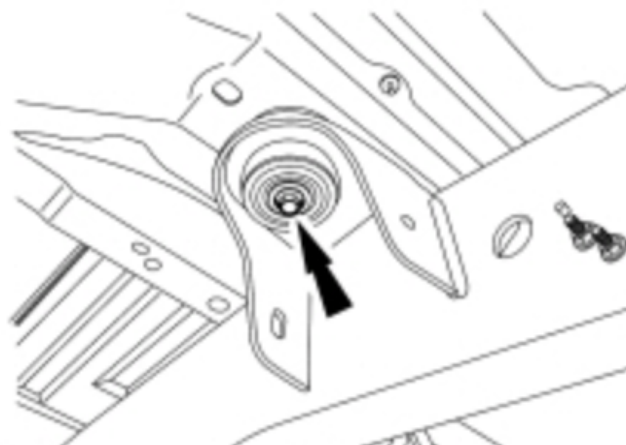
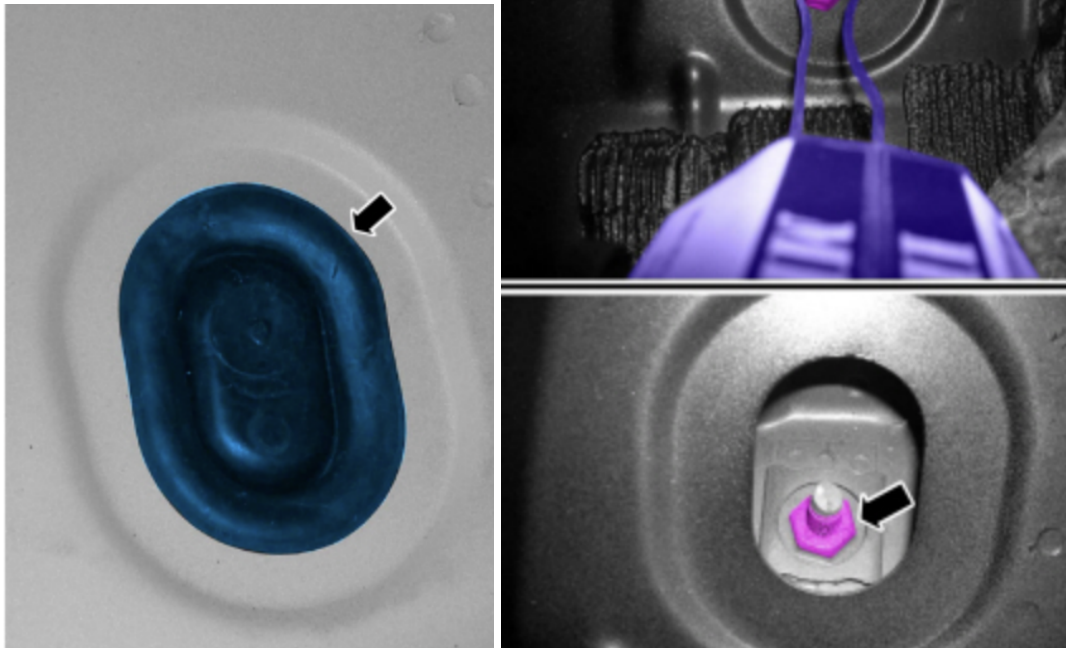
***NOTE- It may require help to hold cage nuts or other tasks to remove the cab bolts and change the mounts SPE recommends that you have help when performing the installation.

*** NOTE- There are many different ways to crib or lift the cab. You can use a car lift/ hoist, or you can crib with floor jacks, stands, etc. Please use caution or have a professional perform the installation.

1. Remove the cab mount bolts, it may be necessary to apply heat to the front cage nuts along with a jack pushing upward. Use an impact gun to remove all the bolts.



2. Remove all of the other bolts. It may be necessary to have someone hold the cage nuts from the top. You will need to pull the carpet back to get access to the inside cab plugs. You will need to remove plugs and hold the cage nuts with a socket.



3. After removing the bolts. Lift the cab just high enough to remove the body mounts. Take note and watch everything that's still connected to the cab wiring, hoses, steering shaft, etc. and make sure none are stressed during lifting. Only lift as high as is needed to remove the old mounts.
4. Once the old mounts are removed, stack in the new mounts as shown. The bottom side consists only of the smaller billet cap and silicone bushing.



5. After Installing the mounts tighten down with the new provided bolts and washers to 76 Lb-Ft (Ford TQ amount).

