



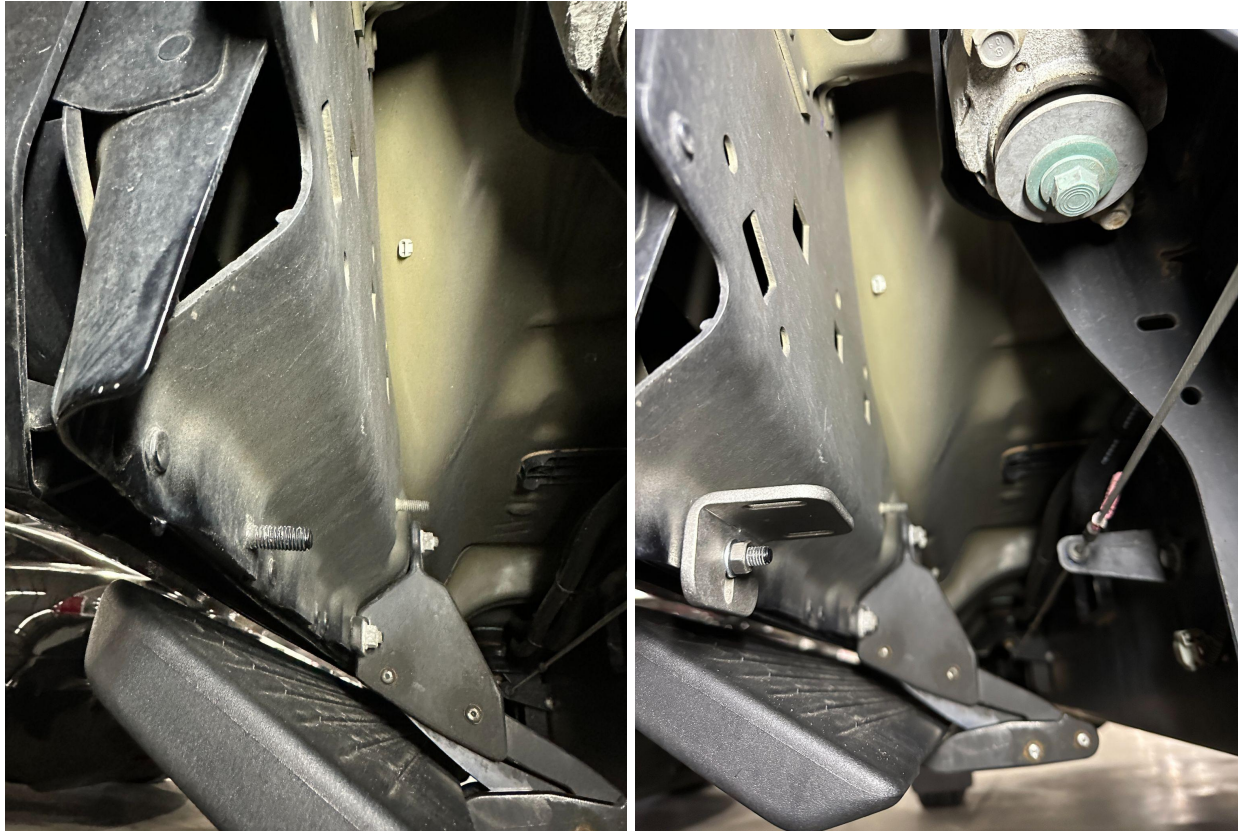
## 2017-2023 6.7 Powerstroke External Catch Can Instructions

**\*\*\*Note:** Although this product is designed for use on the 6.7 Powerstroke it is still universal in design. This means with the included parts its possible to mount it under the truck in different configurations. We will show you our recommended way to do it.

**Once installed its as simple as draining it every oil change.**



1. Attach the included hose and extension to your existing CCV hose with supplied union and clamps/Ties.



2. Mount the included L bracket on the rear most stud on the body at the pinch weld. We prefer this location on the 17-23 model trucks. The bracket is designed to work with the factory studs making custom locations easier to achieve.



3. Mount the catch can and orientate the drain and hose inlets as shown. Install the catch can to the L bracket with the provided bolts and washers. Adjust and make sure nothing is rubbing.



4. Install the 90 degree hose end and route the hose similar to the picture above and connect to the hose end by simply pushing it on. No clamp needed. Use ties to secure the hose.