

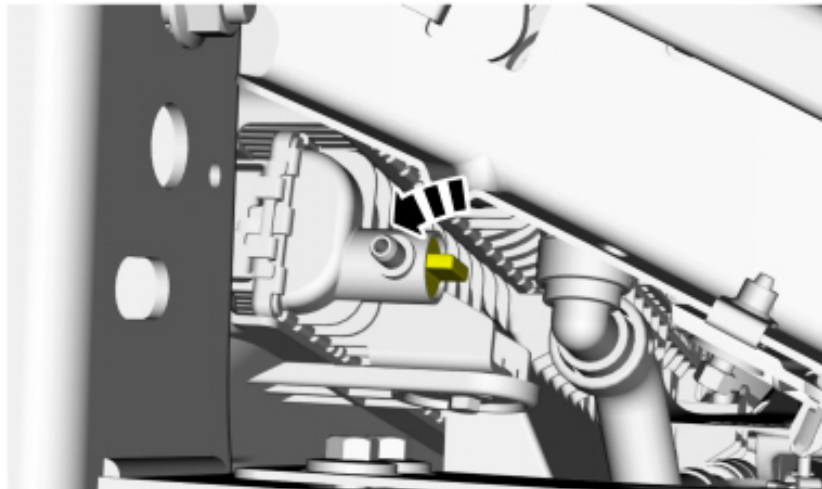


11+ 6.7 Powerstroke Billet Booklung Intercooler

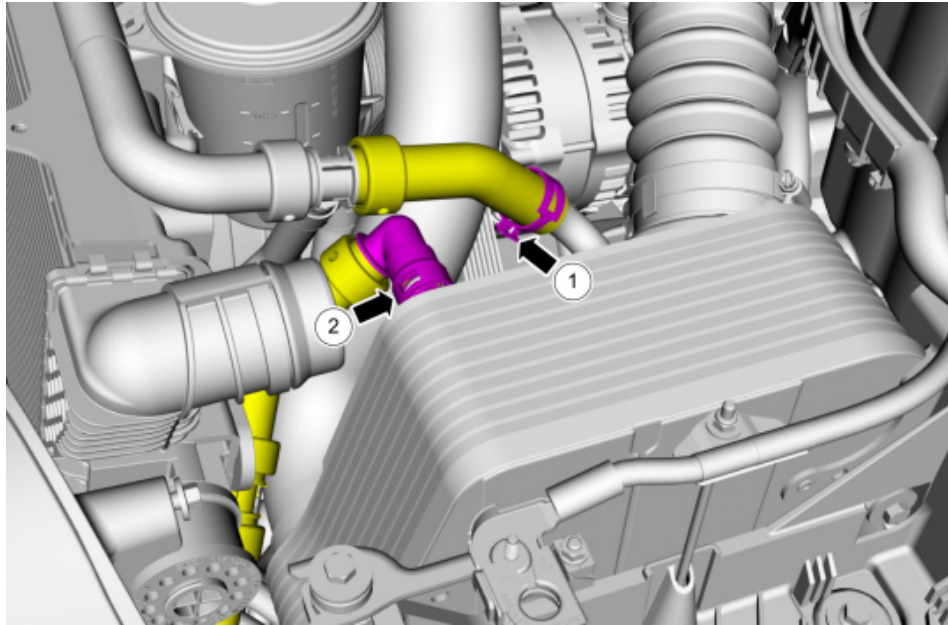
*****2017+ 6.7 Powerstrokes will require an earlier Cold side intercooler pipe or piping kit due to the outlet being larger.

*****SPE highly recommends removing the secondary thermostats located in the secondary radiator end tanks. They are a very low temperature at 110F. We recommend removing them for flow reasons. This is shown below.

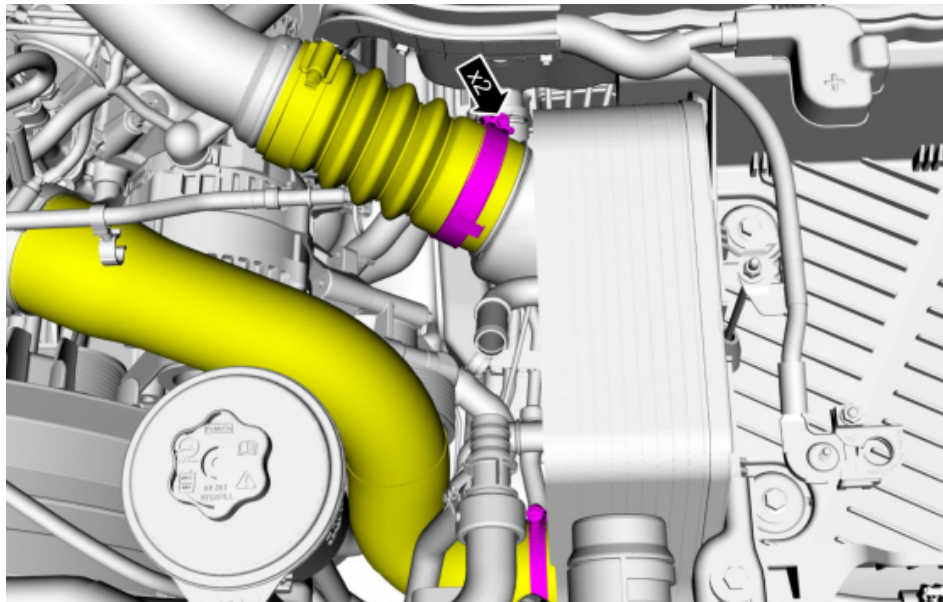
1. Disconnect both batteries and remove the driver-side battery with an 8/10mm socket. Drain the secondary and primary cooling system. Remove the cap from the small coolant bottle. Located on the passenger side of the truck, loosen the drain valves for both radiators. Tighten when finished.



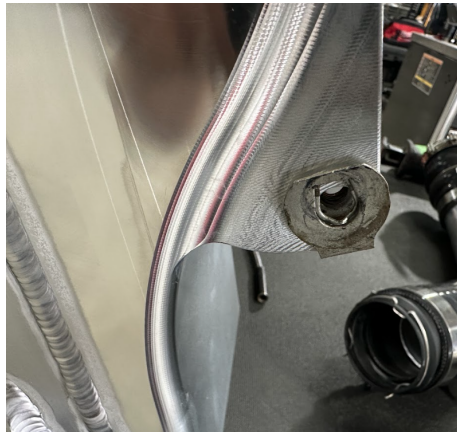
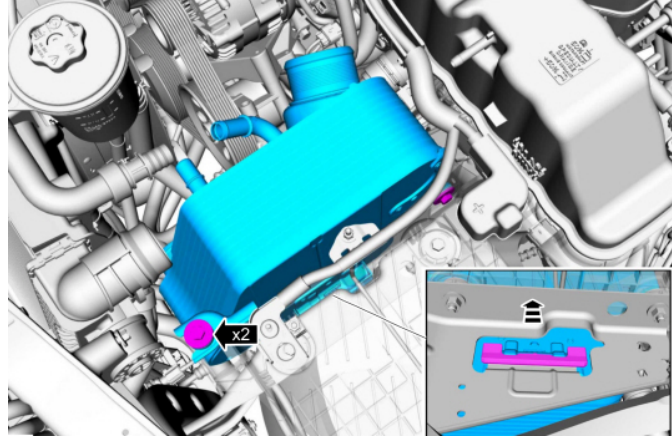
2. Remove the coolant lines from the intercooler.



3. Remove the Intercooler charge pipes.



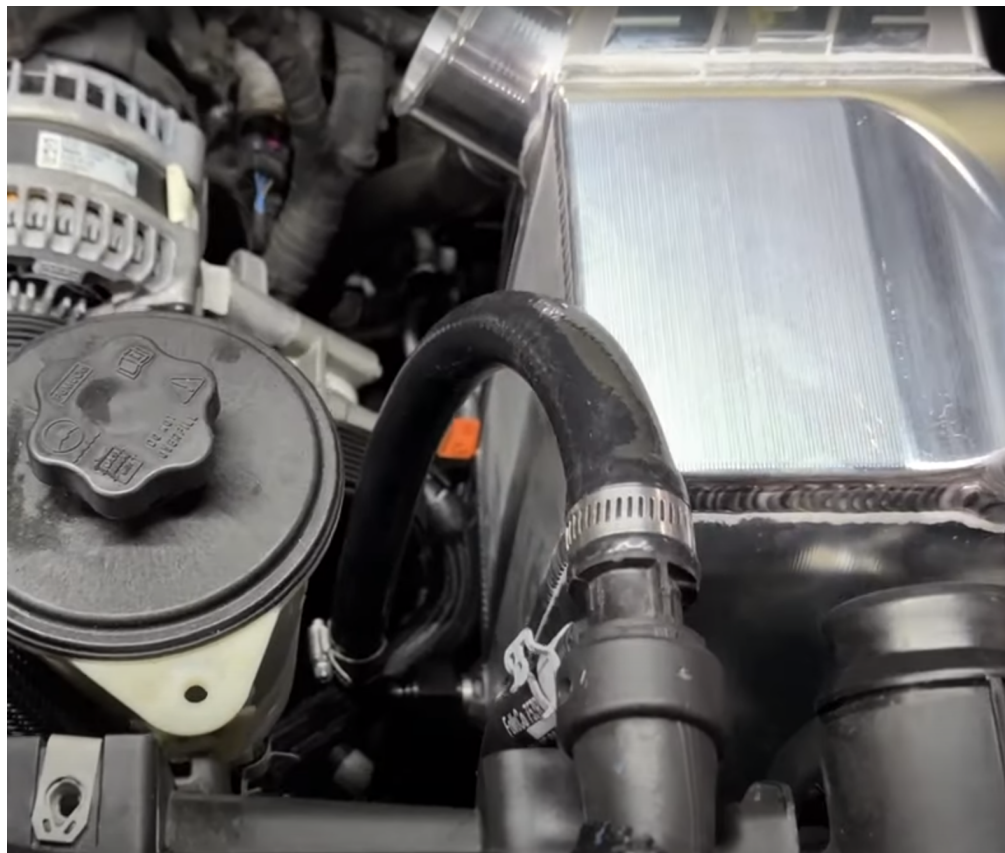
4. Remove the intercooler 13mm mounting bolts. Remove the intercooler. You will be reusing the nut U-clip and the rubber isolators, as shown.



5. Install the SPE intercooler with the factory 13mm hardware. The lower power steering hose may be close or touch the lower tank. This is different on all trucks due to factory assembly variables. If it seems too close or tight, add a sheath of hose or convoluted tube to the outside of the power steering hose.



6. Prepare the uppermost intercooler hose to be run to the intercooler. The upper hose will run to the bottom of the SPE intercooler, as shown. Cut and remove the plastic clamp off of the factory hose and remove the hose. Use the supplied hose, hose end, and clamps as shown.

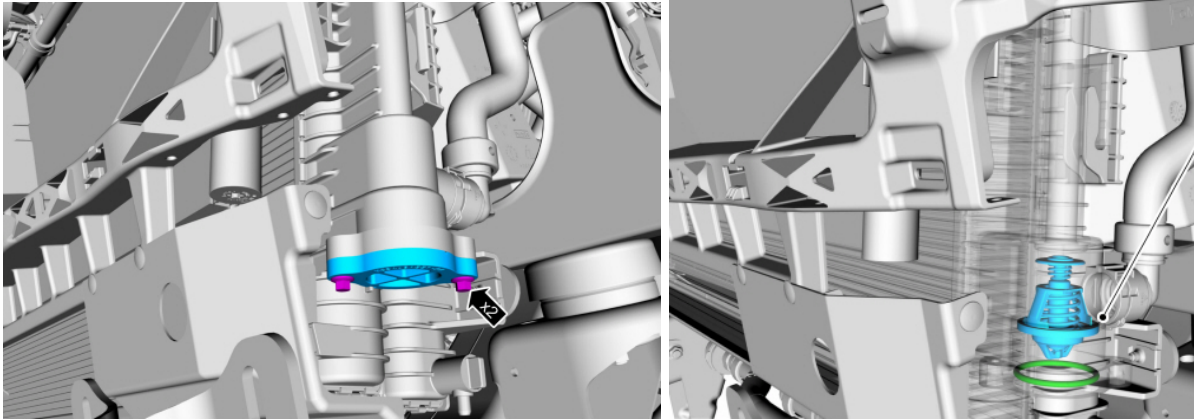


7. Prepare the Lower factory hose to run to the top of the SPE intercooler. Cut 1" to 1.5" off of the end of the overall hose length; depending on the year truck, they do vary. Make sure before cutting the hose that there is adequate length after installing the 90-degree hose end to reach the intercooler fitting, as shown below. Install the hose end and clamp, then tighten the AN nut to the intercooler.

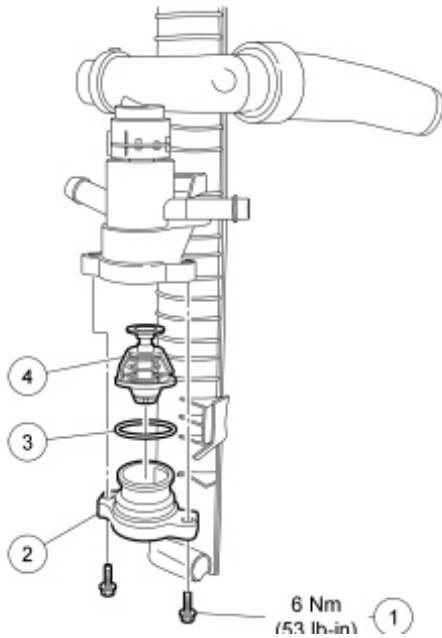


8. For optimum performance, SPE recommends removing the secondary radiator thermostats. This is a free and easy upgrade. The thermostats are located in the secondary radiator end tank(s). Remove the front grill to gain access. Remove the covers to take out the thermostat(s), and then reinstall cover(s). Early models have two, one on each side; later models only have one.

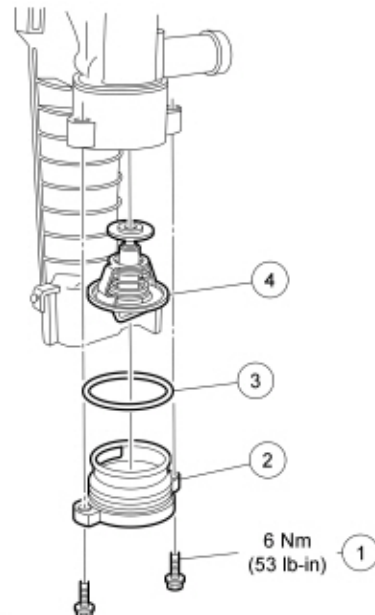
2017+ Single thermostats: Driver-side



2011-2016 Dual thermostats:
Passenger side Hi Temp



Driver side Lo Temp



9. The rest of the installation is the reverse of the removal procedure. Reinstall the charge air piping and primary cooling system components. Reconnect batteries and top off the coolant. Allow the vehicle to come up to temp and then cool. Top off the fluids again, and recheck all hose and coupler clamps. Now you can enjoy the extra torque and horsepower!

