

BOOTSTRAP FARMER



BOOTSTRAP FARMER

DROP SEEDER

OPERATION & SEED GUIDE

MADE IN USA

SEED PLATE & SEED GUIDE

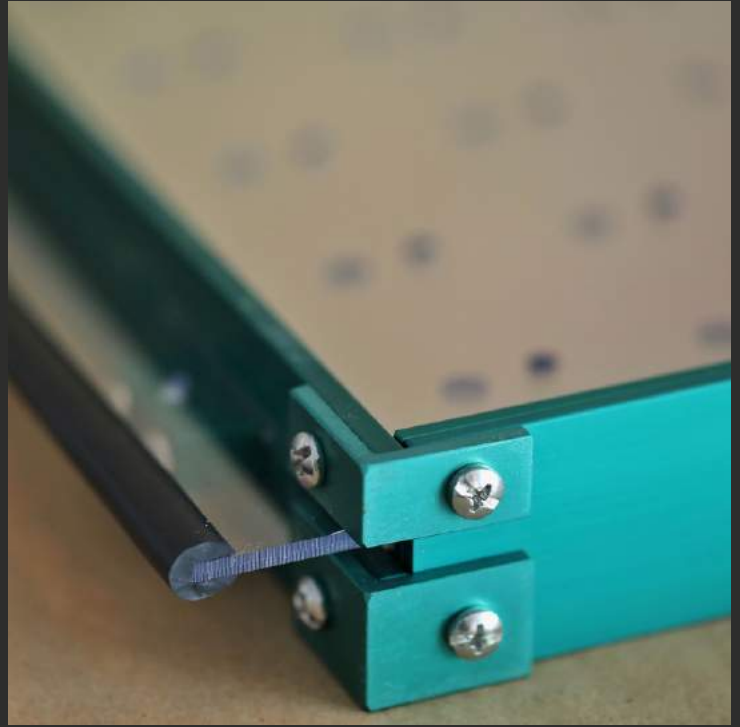


PLATE SIZE

72 Cell- 2mm, 3mm, 4.5mm, 6mm, 7mm

128 Cell- 2mm, 3mm, 4.5mm, 6mm, 7mm

200 Cell- 2mm, 3mm, 4.5mm, 6mm, 7mm

Seed Guide

2mm: Mustard, Broccoli, Cabbage, Cauliflower, Turnips, Collards, Kale, Bok Choy, Onions, Shallots

3mm: Mizuna, Tatsoi, Tokyo Bekana, Brassicas, Asian Greens

4.5mm: Pelleted Seeds, Some Spinach Varieties, Beets

6mm: Larger Spinach Varieties, Swiss Chard, Okra

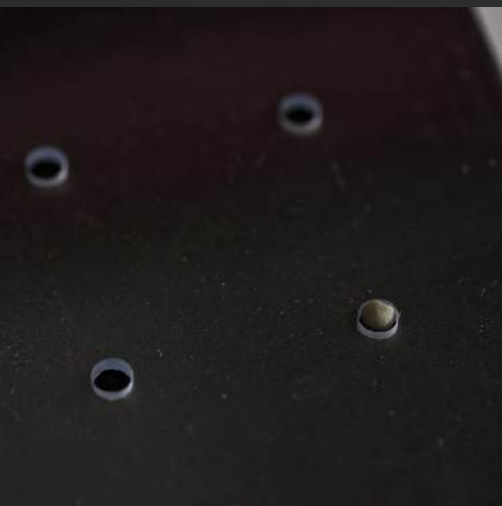
7mm: Microgreens, Bunching Crops Like Asian Greens. Gives the farmer options for evenly spaced multi-seed bunching.



Mustard Seed & 2mm Hole



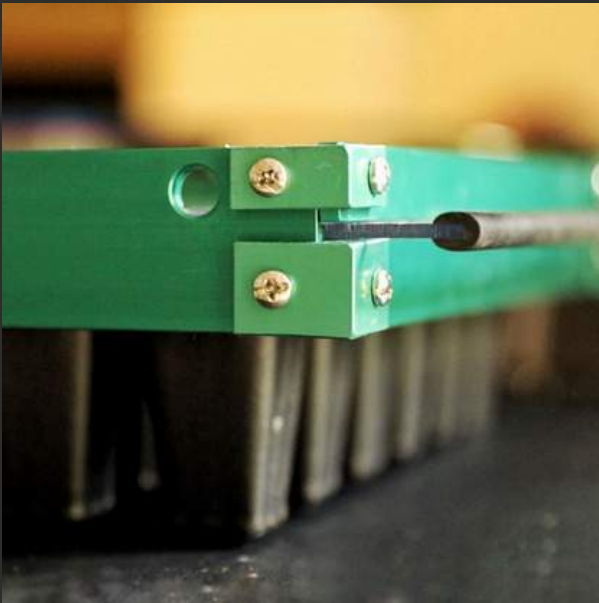
Pelleted Basil & 4.5mm Hole



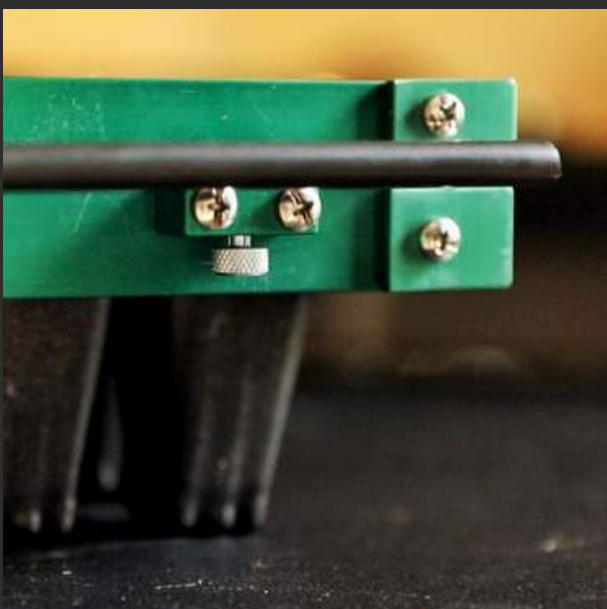
Okra & 6mm Hole



How to Use a Drop Seeder

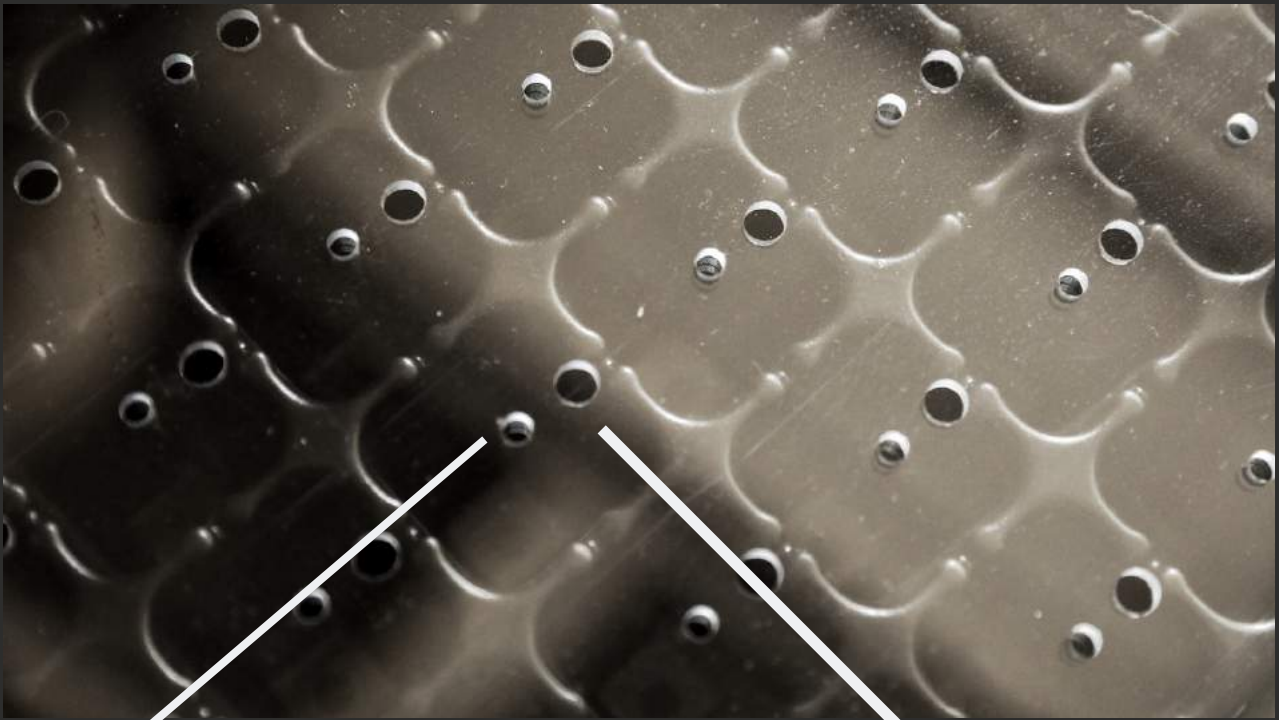


Thumb Hole is the Top Side of the Drop Seeder and is covered with your thumb as you shake/ roll seeds into place



Thumb Screw Secures the Top Plate of the Drop Seeder

Only the 7mm Bottom Drop Plate will slide to the right during use



7mm Drop Hole
Bottom Plate
centered in the
middle of the Cell
Insert

Seed Hole in 2, 3, 4.5, 6, or
7mm is the moveable top
plate and captures the seeds
as you roll/gently shake seeds
into sized drop holes



The holes align and drops through the
centered 7mm bottom plate.



Discharge any static electricity with dryer sheets



To dimple cell inserts, press media into place with another cell insert

Bootstrap Farmer Inserts are available in 32, 50, 72, 128, & 200 cell counts and fit perfectly with Bootstrap Farmer Heavy Duty 1020 Trays

Tips & Tricks

Static Electricity

Moving plastic, dust, and dry conditions can charge the seed plates with static electricity. To discharge, touch plates and frame with dryer fabric. Cleaning with dish soap in between sessions will also help.

Rates

Seed varieties, desired bunching, and your farm's needs will determine cell size, plate size, and seed rates.

Maintenance

Clean plates after use. Pelleted seeds and dust will collect on plates and can be wiped clean with a damp towel. Do not use when wet, dry in between use.

Before use, insure screws are not loose.

If plates become stiff or will not fit into rail, loosen screws to re-square frame.

General Operation & Efficiencies

Drop seeders are well suited for operations consistently seeding 50 or more trays per week, however your time demands may justify the investment earlier. In order to maximize these efficiencies keep seeds, grow media, trays well soaked. Batch processes to create an assembly line. Fill and dimple all trays then seed all trays. You can fill the top plate and shake seeds into place with excess seeds on top-drop-then shake to refill again in secession. Like all farm activities, you'll get better in time.

For video instructions go to:

<https://www.bootstrapfarmer.com/products/drop-seeder>



BOOTSTRAP FARMER