

BarTender® 2022 is built to enable secure, anywhere, anytime printing for any business, and provides new, expanded resources for integration in enterprise environments.

- Print anywhere, at any time, on any operating system with Print Portal
- Easily connect labeling and enterprise data with our SAP HANA database connector
- Print faster with the newly redesigned Print Station, offering streamlined operations and improved performance
- Seamlessly integrate label printing with web applications using the BarTender REST API



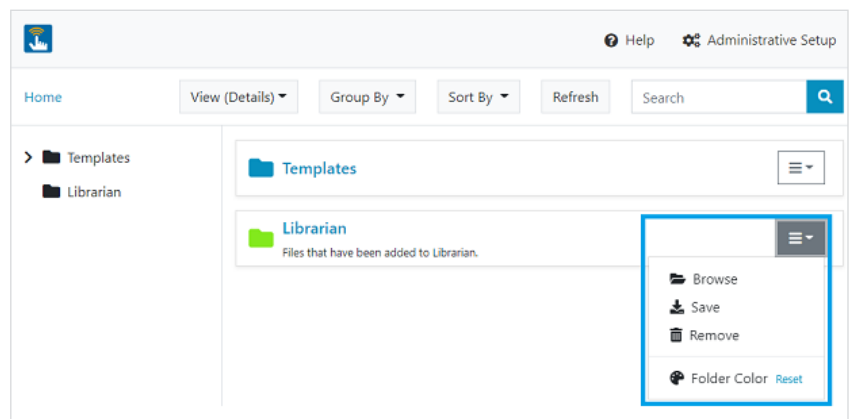
## New BarTender REST API

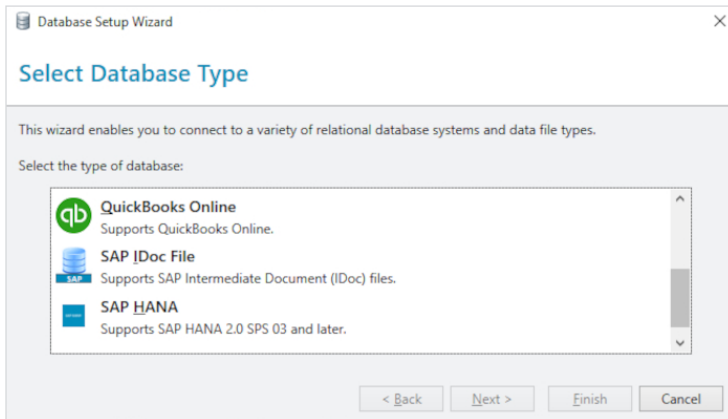
- Access an extensive set of BarTender actions via a RESTful web-service API to automate label printing
- Integrate BarTender and enterprise applications with scripting formats such as YAML and JSON
- Quickly understand how to use the BarTender REST API through OpenAPI documentation

## Expanded access to remote printing with Print Portal

*(Now available in Professional, Automation and Enterprise Editions)*

- Find, select and print labels from any device in an instant, via web browser
- Define custom folder images and colors to make documents and labels simple to locate
- Create and manage more detailed user permissions with expanded, more in-depth administrator controls
- Find and set security and advanced properties on all-new property pages, designed with user experience in mind



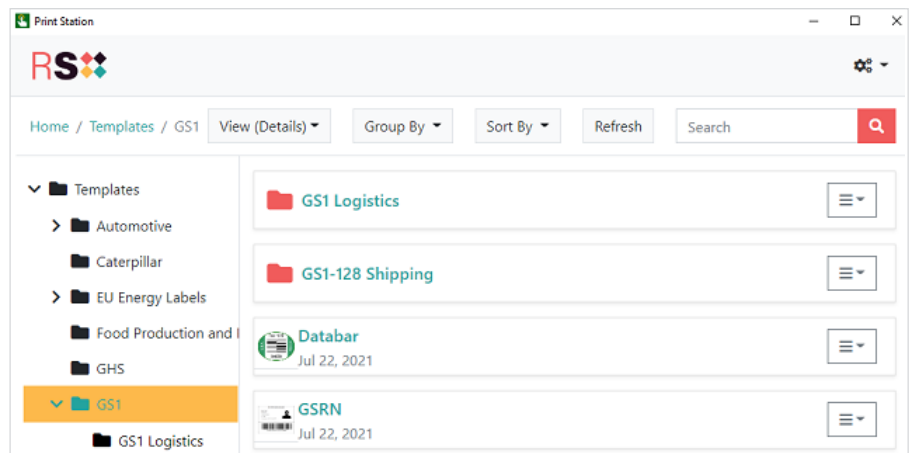


## New SAP HANA database connector

- Connect labeling directly with your data stored in SAP HANA
- Access SAP HANA in the cloud or via on-premises instances
- Support for SAP HANA 2.0 SPS 03 and later Versions





## Redesigned Print Station

- Point and click printing: quickly locate and open documents, select printers, enter data and print using Print Station's new, intuitive modern user interface — new grouping and sorting options to help print operators work more efficiently
- Customize the branding of Print Station with your own logos and color schemes to integrate BarTender more seamlessly into your print environment
- Use Print Station to access and advance files through workflow states, and review and approve BarTender documents for production (Enterprise Edition)



## Key enhancements by edition

BarTender 2022's enhancements are available in the following BarTender editions:

 <b>STARTER</b> EDITION	 <b>PROFESSIONAL</b> EDITION	 <b>AUTOMATION</b> EDITION	 <b>ENTERPRISE</b> EDITION
<ul style="list-style-type: none"><li>No changes</li></ul>	<ul style="list-style-type: none"><li>Includes all Starter Edition features</li><li>Print Portal</li><li>SAP HANA database connector along with support for over 20 other data sources</li><li>Redesigned Print Station</li></ul>	<ul style="list-style-type: none"><li>Includes all Professional Edition features</li><li>BarTender REST API</li></ul>	<ul style="list-style-type: none"><li>Includes all Automation Edition features</li><li>Integrated Librarian and workflow support for Print Portal</li><li>Full user and access security support for Print Portal</li><li>Centralized logging and full audit trail support for Print Portal</li></ul>

## System requirements

### Operating system

- Windows 10 and 11
- Windows Server 2022, 2019 and 2016
- 64-bit (x64) editions
- An active internet connection may be required to install Windows updates.

### Hard disk and memory (\*minimum)

#### Complete BarTender Suite utilization (64-bit)

- Memory: 8 GB RAM
- Hard drive: 20 GB (to allow sufficient space for logs)

### Display resolution

- 1024 x 768 (minimum)
- 1920 x 1080 or better (recommended)

### .NET Framework

- .NET Framework 4.7.2 or later version is required
- The BarTender installer will automatically install all required .NET Framework components
- An active internet connection may be required to update .NET framework

### Database

- BarTender System Database, Librarian, History Explorer, and Reprint Console require Microsoft SQL Server 2012 or higher (Express or Full edition)

\*(Recommended system specifications will vary based on the specific details of each installation)