

Small 6 in 1 Short Garden Bed Assembly Instructions



IMPORTANT: Read before beginning.

- Note corners are sharp and could cause injury. Wear protective gloves when unpacking and handling these items; sensible shoes are also recommended. Until the clip on safety edge is fitted all necessary precautions need to be taken to avoid injury.
- Attach all nuts and bolts loosely, then use a cordless drill to tighten. Failure to tighten each nut and bolt to its maximum may result in failure.
- Place the bottom edge of the raised bed on a 1 inch layer of gravel/stone or free draining sand. This allows for excellent drainage and also protects the bottom edge of the steel.
- If filling the beds mechanically, fill the bottom 1/3 of the bed slowly. Do not climb into the bed while filling as this puts unnecessary pressure onto the bed.
- Birdies beds are designed to handle the weight of organic based soils from landscape suppliers only.
- It is suitable to use the Hugelkultur method in the Birdies beds. Visit Epic Gardening on YouTube for more information.

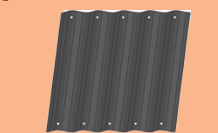
Included components:



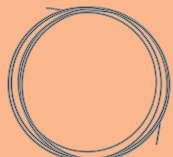
bolts x52



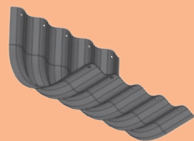
nuts x52



14" straight sheets x6



safety edge x1



corner sheets x4

Equipment needed:

Phillips screwdriver or cordless drill

Optional:

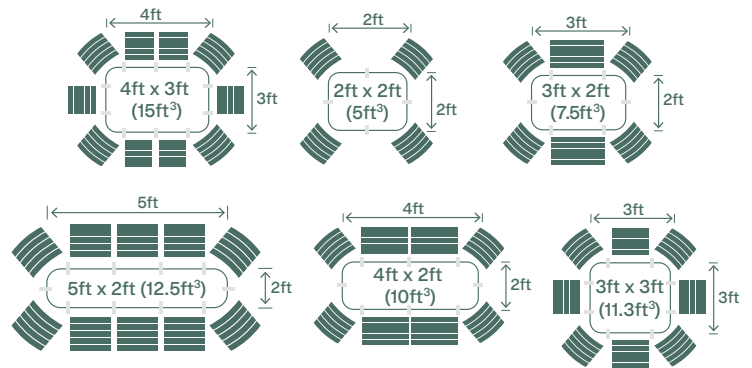
Impact driver
Phillips bit
8mm socket wrench
Bubble level

Recommended:

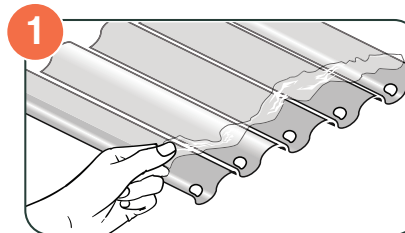
Protective gloves
Close-toed shoes

Possible configurations:

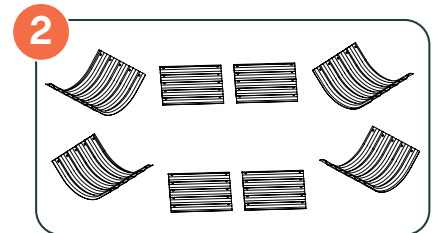
Due to the manufacturing process bed sizing may vary +/- 2 inches.



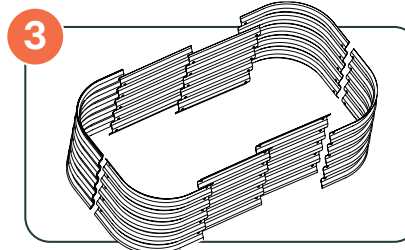
Instructions:



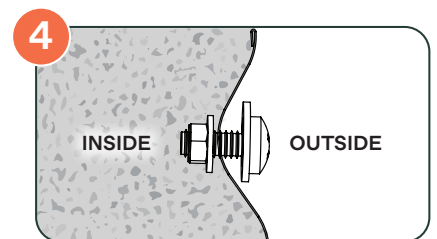
Peel protective plastic 1 inch past the punched holes. Remove remaining plastic once fully assembled.



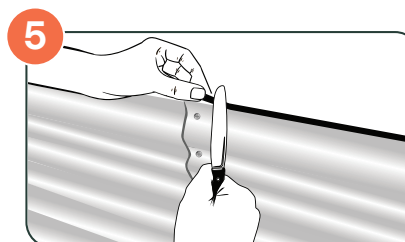
Separate the panels required for your chosen configuration, and if there are extras, set those aside. Lay the panels out.



Assemble all side panels first and then attach to the corner sections. Ensure that you attach the corners on the outside of the straight sheets.



Attach all nuts loosely & then tighten using a screwdriver /cordless drill assists with this process. Failure to tighten each nut and bolt to its maximum may cause failure.



Remove the remaining protective plastic. Starting on a straight length of steel, push the safety edge over the rolled steel edge. Where the steel panels join using a butter knife to pry open will assist in attaching. **IMPORTANT:** Ensure the safety edge starts and finishes on a straight section of steel, preventing detachment.

FAQs



Scan the QR code for more details, tips, and solutions. Or, contact our customer service at: customerservice@epicgardening.com

Does your Birdies bed have scratches from shipping?

Note that the paint isn't actually the protective part of the bed. The bed itself is made of Aluzinc, one of the most durable galvanized steels out there. You won't deal with any rust at all, even with the scrapes. Please contact customer service to have a can of exterior paint sent to you. It is an exact match for the coat that is already on the bed..

Were your Birdies bed corners slightly bent during shipping?

The panels can be easily bent back into place. Use a cloth to protect the metal when you re-adjust the bed and return it to its original state. After you're done, it will be like new, especially when two beds are screwed together. Make sure to put the bent panel under the non-bent side. Ideally, placing bent panels on the bottom ensures any remaining imperfections aren't visible. Check out this helpful YouTube video (growepic.co/bentpanels).

Are you missing any hardware?

No problem at all! Just contact customer service and they will send the hardware to you right away.

Do I need a Bracing Kit?

Only our medium and large beds require a bracing kit which will be included

in the box. If you need one (or more) for peace of mind or because you're combining beds, you can purchase more from our store. Check out the following link for more information (growepic.co/bracinginfo).

Can I combine beds?

Yes! You can combine two beds together. We always recommend installing bracing bars when combining beds to prevent bowing due to soil pressure. For detailed instructions, visit (growepic.co/bracinginfo).

Can I place my Birdies Beds on a slope?

Indeed! Build a terraced slope with retaining walls, which looks quite nice but takes some effort. If you have a shallow slope and want to nestle your bed into it, refer to our YouTube video (growepic.co/slopeplacement) for bracing instructions.

How do I fill my Birdies bed?

Most models of Birdies beds can be configured to many different dimensions due to their panel construction. This causes the soil requirements to change based on the dimensions you choose. But not to worry! To make this simpler for you, we've created a chart for each model showcasing the dimensions and the required soil in both cubic feet and cubic yards. For taller models we

recommend watching our YouTube video (growepic.co/filltallbeds) to save 60%+ on your soil costs.

What surface can I place my Birdies bed on?

Place your Birdies raised beds on any surface, from bare dirt to concrete. Here are our recommendations for each type of surface. Scan the QR code for instructions on various surfaces. This video also has details (growepic.co/bedsurfaces).

Certificate of Authenticity



Originally designed and made in Australia by Birdies Garden Products

Produced in a factory powered by clean energy, that offers fair wages, prioritizes low waste production and steel recycling.

Officially sold by Epic Gardening, the authorized distributor of Birdies Garden Products in North America.

This is an Original Birdies Bed



CONTACT US:

customerservice@epicgardening.com



Dear gardener,

It's my pleasure to introduce you to our flagship product, the Birdies Raised Bed.

Each raised bed is meticulously manufactured in Australia, in a solar-powered, family-owned factory. As the original inventor of the metal raised bed, Birdies Beds are built by gardeners, for gardeners, and are designed to last 20+ years. They offer superior resistance to extreme weather conditions and dramatically better rust and corrosion prevention compared to standard metal beds.

Setting up your garden isn't just a purchase—it's the start of a life-long relationship. We're here for you, not only with best-in-class products to help you

garden, but an entire ecosystem of educational content on gardening, which you can find at www.epicgardening.com.

If you have any product issues or feedback, email our dedicated customer support team at customerservice@epicgardening.com and we'll get back to you as soon as possible.

Thank you for choosing us and being a vital part of our simple, but audacious mission: *to teach the world to grow.*

Keep on growing,

Kevin E.

Kevin Espiritu
Founder, Epic Gardening