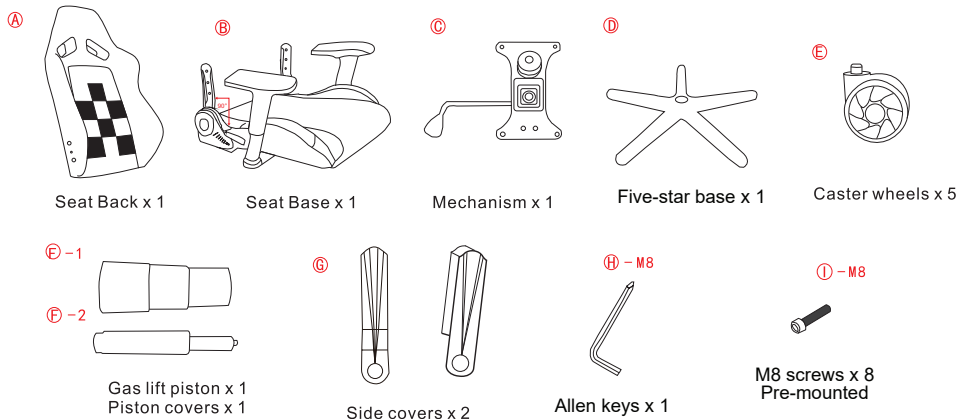


Assembly Instructions

Parts

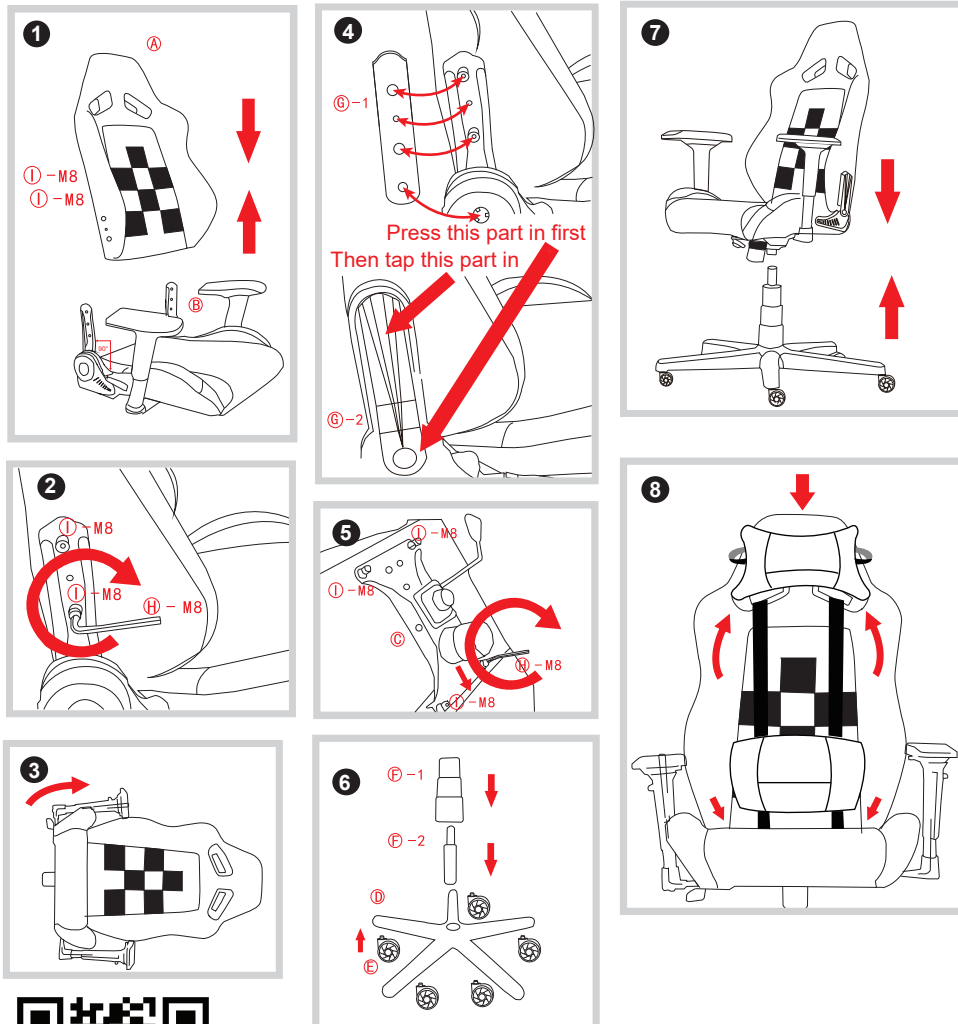


Pre Assembly Instructions

ATTENTION

M8 screws can be found pre-mounted on the seat back and base. Refer to steps 1 and 4 for unmounting screws.

Place cardboard or drop cloth under chair to prevent damage to floor during assembly. Make sure the seat back adjuster on the seat base is set at 90 degrees (as shown in step 1)



Visit www.RapidX.io to view the unboxing and assembly video. Scan the QR code with your phone to be taken to the video landing page.

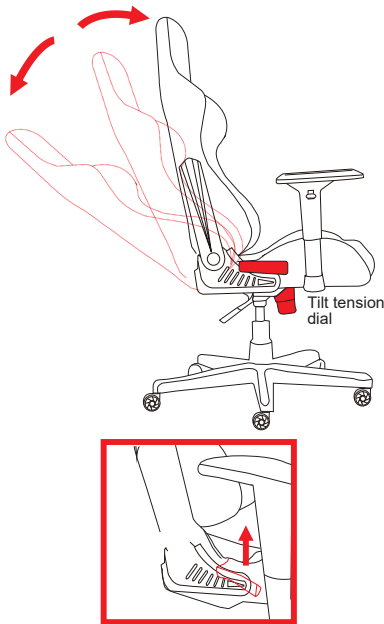
For additional help, please email Support@RapidX.io

FINISH
LINE

by **RAPIDX** www.RapidX.io

Assembly Instructions

1 Adjust Seat Back



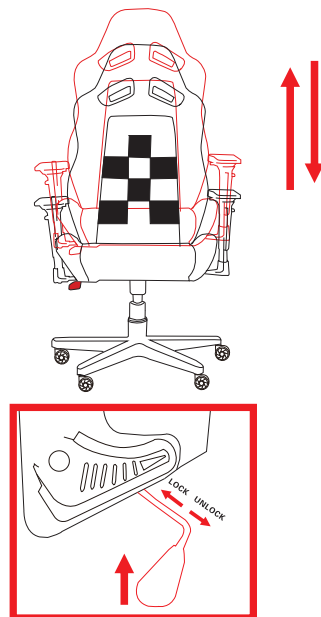
Be sure the rocking mechanism is in the locked position before using the reclining feature.

To adjust the seat back: lift up on the handle and adjust to the most comfortable angle.

Reset to the upright position: lift up on the handle, gently lean against the seat back and it automatically returns to the upright position.

Use the Tilt tension dial to increase or decrease the rocking tension.

2 Seat Height and Rocking Mechanism Adjustments



Lower the seat: Sit down and lift the handle, the seat automatically lowers.

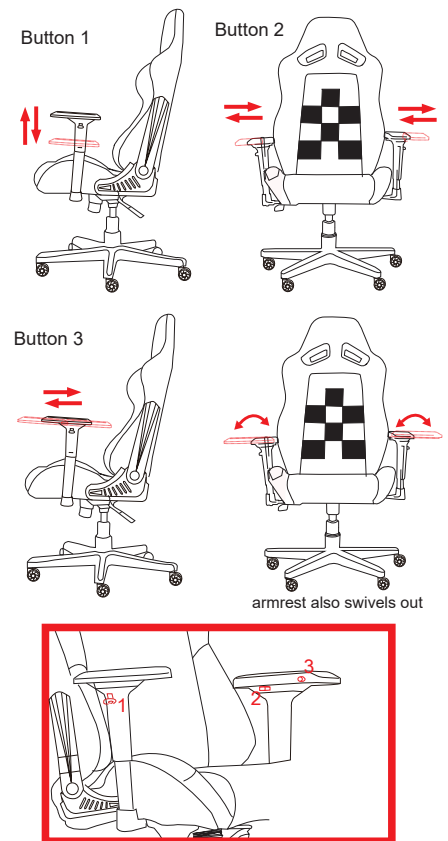
Raise the seat: Stand up and lift the handle, the seat automatically rises up.

Unlock Rocking Mechanism: pull handle to the right.*

Lock Rocking Mechanism: push handle to the left.*

* Seat cannot be leaning back while performing lock procedure

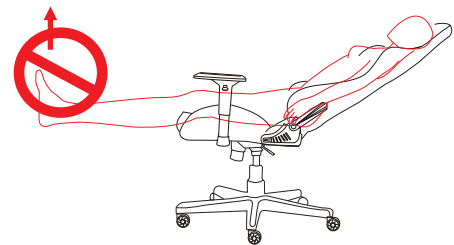
3 Adjust Armrests



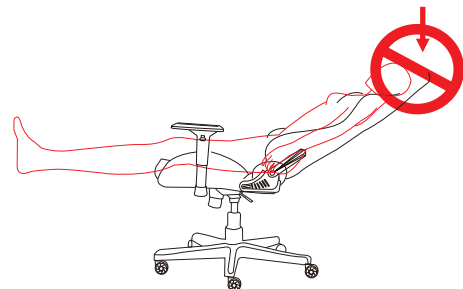
Button 1 moves the armrest up and down. Button 2 slides the armrest side to side. Button 3 the armrest forward and back. Armrests also swivel in both directions.

Warnings

1. Do not use this chair for purposes other than sitting, do not stand on the seat
2. Do not use chair as a ladder or step stool
3. Only use chair on flat surfaces to prevent turning over
4. This chair is design for single person use, maximum weight 265lbs.
5. Do not use chair to move heavy items
6. Do not use chair near flammable materials
7. Keep out of direct sunlight
8. Do not use chair near fire or in damp environments
9. Do not dismantle gas piston
10. Do not use the recline feature while rocking mechanism is engaged.



Do not lift feet off the ground when the seat back is completely lowered



Do not push down on the headrest when the seat back is completely lowered
Be sure to LOCK the Rocking Mechanism before using the reclining feature

Care

Wipe with a soft dry cloth to clean the chair

To remove stain use a small amount of mild detergent diluted with hot water, wipe until stain is removed, then dry the chair to remove excess water and detergent

FINISH
LINE

by
RAPIDX www.RapidX.io