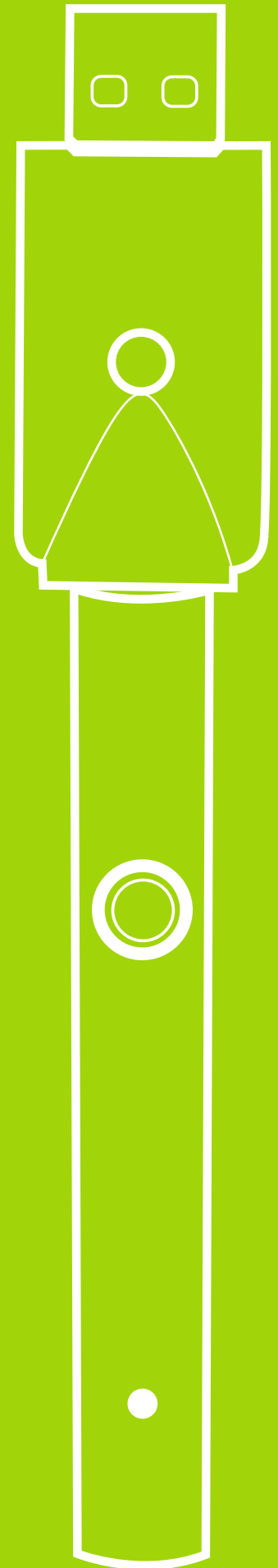


WINK

PEN LIGHT

INSTRUCTION MANUAL



**ADJUSTABLE
VOLTAGE 2.8-4.0V**



**PREP
MODE**



**290
MAH**

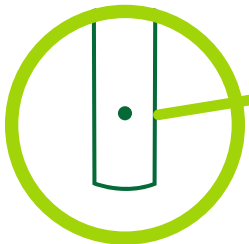


**MULTIPLE
LED COLORS**



**CHARGER
INCLUDED**

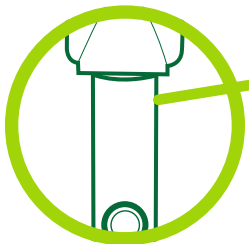
WINK PEN LIGHT



FLASHLIGHT

Press & hold the bottom button for 2 seconds to turn on/off.

Click the button once to cycle through LED colors.



UNIVERSAL PORT

Press large round button 5x to turn on/off.

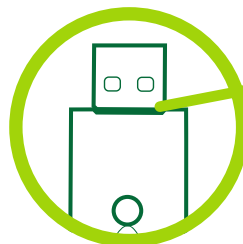
Attach an approved 510 thread accessory.

Click the main button 3x to cycle through voltage levels:

- Red Light (4.0V)
- Green Light (3.4V)
- Blue Light (2.8V)

Click the button twice to activate Prep Mode & once to exit Prep Mode.

Press & hold button to use device accessory.



CHARGING

Screw the 510 charger into the universal port. Plug the charger in using a wall adapter.

While Charging:

- Charger light is Red
- Battery light is Green

Once Charging is Complete:

- Charger light is Green
- Battery light is OFF

You MUST use the included charger with the device.

NEVER charge in a vehicle. ALWAYS use a wall outlet.

WARRANTY INFORMATION

Enter the 6 digit authentication code printed on your battery, at oozeline.com/apps/product-registration to register your product.