

DROUGHT

— DRY VAPORIZER —



@OOZELIFE #OOZELIFE

OOZELIFE.COM



DROUGHT

— DRY VAPORIZER —

In order to ensure safe use, please read all instructions and safety warning **before operating**. Failure to follow instructions may result in injury and may void your warranty.

KEY FEATURES



AUTO SHUT-OFF



MICRO USB CHARGING



30 SECOND PRE-HEAT



ADJUSTABLE TEMP 320°F-410°F



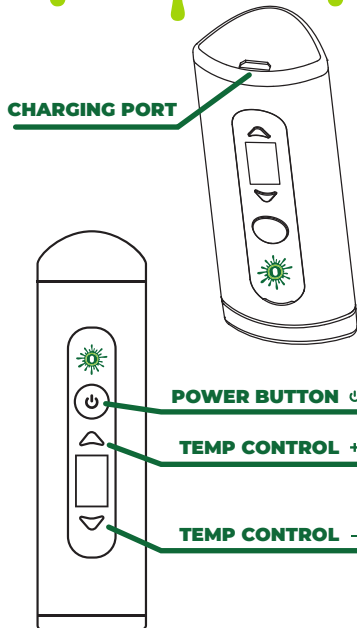
VISIBLE BATTERY LEVEL



COMPACT DESIGN

DROUGHT

— DRY VAPORIZER —



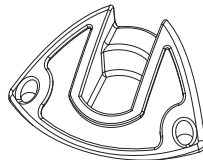
CHARGING PORT

POWER BUTTON

TEMP CONTROL +

TEMP CONTROL -

INCLUDES



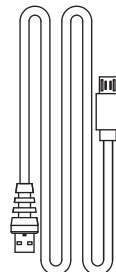
SILICONE MOUTHPIECE



CLEANING BRUSH



PACKING TOOL



USB CABLE

USER TIPS

- For best results, **fill chamber halfway or more, but do not pack tightly**. This allows for even heat distribution and room to stir your herbal blends if necessary throughout usage.
- To maximize efficiency, once used allow unit to cool, and then stir herbs before the next cycle.
- Be sure to turn off the unit when you are done by pressing the on/off button 5 times within 2 seconds.

LED DIGITAL SCREEN INSTRUCTIONS



TURN ON



TURN OFF



CHARGING



AUTO SHUT-OFF COUNTDOWN



TEMPERATURE SETTING

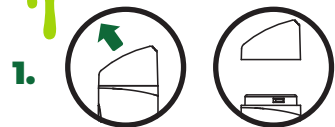


ERROR OCCURED

IMPORTANT USAGE TIPS

- Press and hold the power button 5 times within 2 seconds to power on/off.
- Press and hold power button and “-” buttons simultaneously for 2 seconds to change from Fahrenheit to Celsius or from Celsius to Fahrenheit.
- Adjust desired temperature by manually using “+” or “-” buttons.
- Your vaporizer is equipped with a **4 minute auto shut off time** to prevent wasting power and over heating.

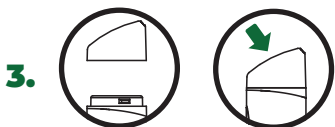
HOW TO LOAD DRY HERBS



1. Remove the mouthpiece

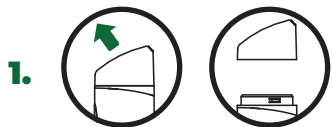


2. Load herbs loosely & gently pack down



3. Replace the mouthpiece

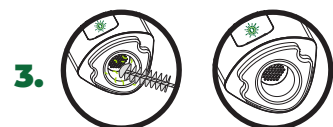
HOW TO CLEAN



1. Remove the mouthpiece

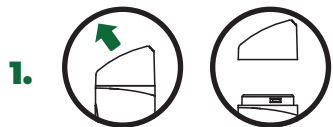


2. Remove the material from chamber



3. Sweep the remaining residue from chamber

HOW TO REPLACE THE SILICONE INSERT



1. Remove the mouthpiece



2. Pull out the insert



3. Replace & fully set the insert into mouthpiece

CHARGING INSTRUCTIONS

- Battery capacity: 1650mAh
- **Initially charge the Drought for 2 hours.** The battery will stop charging when the battery icon is full, and light turn green on power button.
- When battery level is low, charge battery with included micro USB cable using either your computer USB port or a compatible wall charger. Low battery level will be indicated with icon.
- **Do not use the Drought while charging.**

CLEANING INSTRUCTIONS

- Clean parts after **each use** to keep your Drought in working condition. **Keep away from water and extremely hot or cold temperatures.**
- Make sure your Drought is cool enough to remove the mouthpiece.
- Use provided cleaning brush to remove any flower residue. If the chamber gets sticky, **use a q-tip dipped slightly in rubbing alcohol to remove resin build-up.**
- Use an alcohol wipe to clean the digital screen and mouthpiece to sanitize between uses.

DROUGHT

— DRY VAPORIZER —

@OOZELIFE #OOZELIFE

OOZELIFE.COM

