

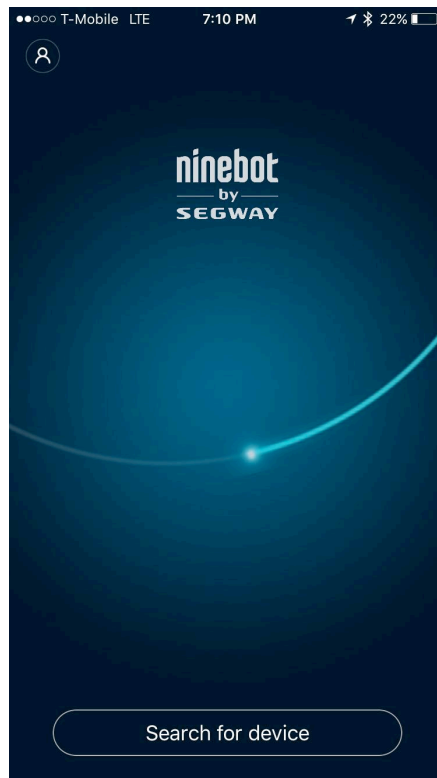
Ninebot by Segway Recalibration Procedure

After you install handlebar you may notice that your MiniPro acts a little differently. It may require re-calibration. Re-calibration is a simple procedure and this function is build into the Ninebot application.

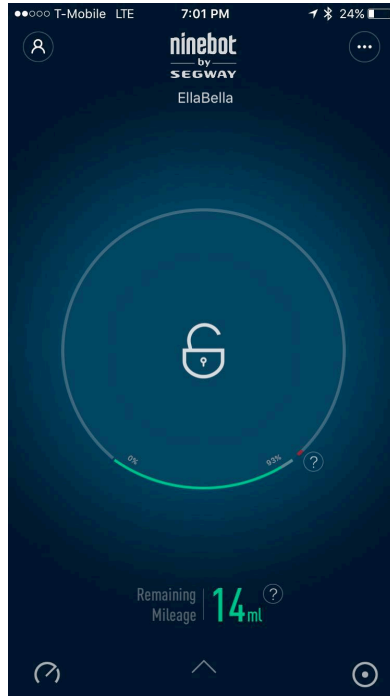
Below are step-by-step instructions how to recalibrate your MiniPro.

Switch on MiniPro and Put it on the parking stand.

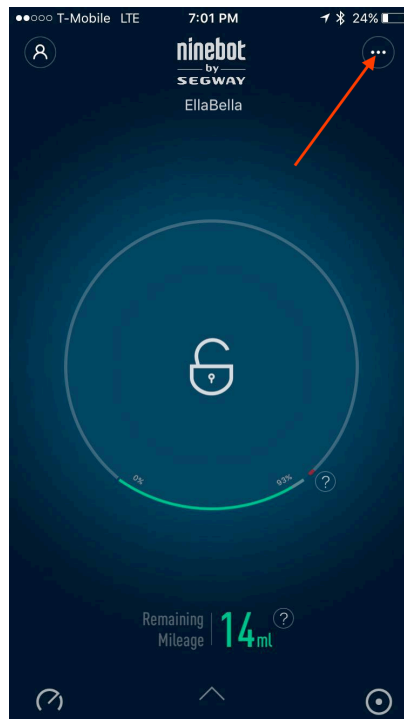
1. Open the 9Bot App and pair it with MiniPro



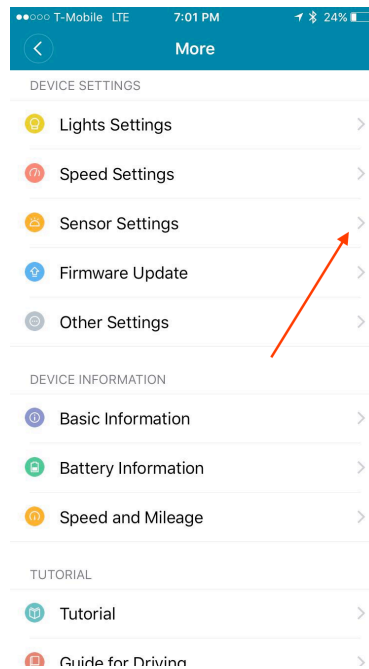
2. After your MiniPro is paired the App automatically will switch to the second screen.



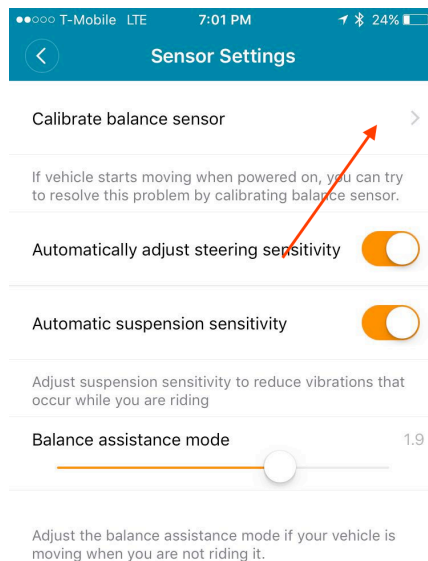
3. Select Options:



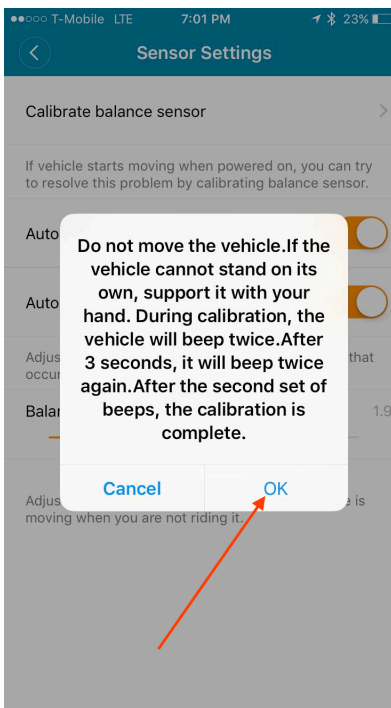
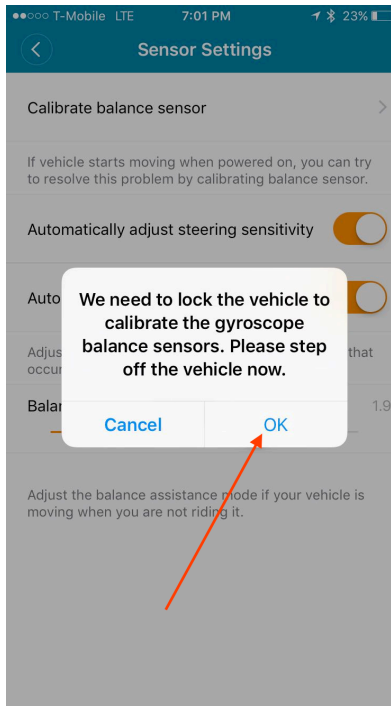
4. Select “Sensor Setting”



5. Select “Calibrate balance sensor”



6. MiniPro will self-calibrate



Wait until MiniPro finishes self-calibration.

You are done.