

Armitron® WATCH INSTRUCTIONS

ANALOG & DIGI-ANA

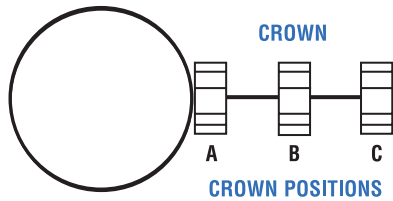
Page 1

ANALOG WATCH INSTRUCTIONS

SETTING THE WATCH

These instructions apply to a variety of watch styles.

To change the Time, Day or Date on your analog watch, simply follow the accompanying instructions, according to your specific style.



A. NEUTRAL POSITION: This is the normal operating position of the watch in which the Crown is free to turn in either direction without any effect on the time.

B. POSITION TO SET THE DATE (if your watch has a Date window)

C. POSITION TO SET THE TIME

SETTING THE TIME ON STANDARD ANALOG WATCH STYLES

NOTE: This "standard" style has no Calendar or Day/Date windows on the dial, and unlike the above diagram, has only 2 Crown positions – Closed ('A') and Open ('C').

To change the time, pull the Crown out all the way until it stops (Position 'C'). Rotate the Crown in either direction until the desired time is obtained. Next, push the Crown back in all the way (Position 'A') to re-engage time keeping. (If watch has a second hand, it will begin to move.)

SETTING THE TIME ON CALENDAR AND DAY/DATE WATCH STYLES

For time setting: Follow the above instructions.

SETTING THE DATE ON CALENDAR WATCHES

If your watch has a date window only, pull the Crown out to Position 'B' (see diagram) and turn the Crown in either a clockwise or counter clockwise direction (depending on the watch style). Continue to rotate Crown until desired date is obtained. Push the Crown all the way back to Position 'A' to re-engage time keeping.

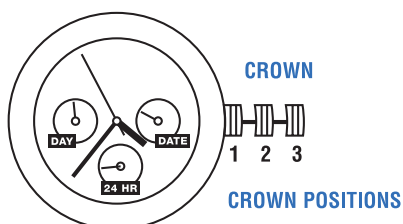
SETTING THE DAY/DATE

If your watch has a day/date window, pull the Crown out to Position 'B' (see diagram). Rotate in either a clockwise or counter clockwise direction (depending on the watch style) to change the day or the date. Each turn of the Crown will advance the day or date respectively. If the day does not advance using this method, pull out the Crown to Position 'C' and rotate it until the time advances each 24 hour period. Continue to rotate the Crown until desired day is obtained. After the correct time has been set, push the Crown all the way back to Position 'A' to re-engage time keeping.

NOTE: During normal time keeping (watch running with Crown in Position 'A') the day and/or date will advance between the hours of 11pm and 5am. Please keep this in mind when setting the watch.

ANALOG WATCH STYLES WITH SUBDIAL FEATURES

- Hours, minutes, and seconds
- Days of the week, date, and 24 hour military time sub dials
- Water resistant as indicated on the watch



SETTING THE TIME, DAY AND DATE ON MULTI-FUNCTION MODELS

TO ADVANCE THE HOURS AND MINUTES

Pull the Crown out to Position 3 when the second hand reaches the 12 o'clock position. The second hand should stop at the 12 o'clock position. Next, turn the Crown clockwise to advance the hour and minute hands to the desired time. When setting the minute hand, put it 5 minutes later than the time to be set and turn it back to the correct time.

Note that the 24 hour military sub dial time zone also changes at the time of setting. Make sure that the 24 hour military time zone corresponds to the correct AM/PM time. Push the Crown all the way back to Position 1 when the desired time is obtained.

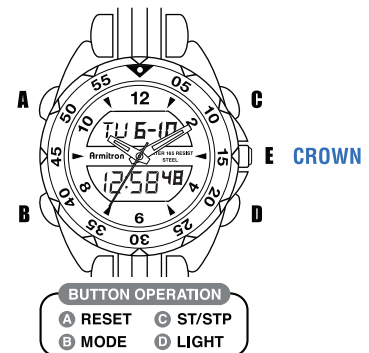
TO ADVANCE THE DAY

Pull the Crown out to Position 3 and turn clockwise. Each full 24 hour turn will advance the day zone by one full day. Make sure that you then set the correct time with the corresponding 24 hour military time. Push the Crown all the way back to Position 1 when desired day and time is obtained.

TO ADVANCE THE DATE

Pull the Crown out to position 2. Rotate the Crown counter clockwise to advance the date. Push the Crown all the way back to Position 1 when desired date is obtained. Do not set the date between 9PM and midnight as it will not change correctly.

DIGI-ANA WATCH INSTRUCTIONS



FEATURES

- Conventional Analog Display with Sweep Second Hand
- Time Telling Mode (Hours, Minutes, Seconds, Month, Date, and Day of the Week)
- 100 years Calendar (2000-2099)
- Stopwatch with Lap Time to 1/100th of a Second
- Countdown Timer
- (5) 24 Hour Alarms
- Hourly Chime: One 'Beep' sound every full Hour
- Second Time Zone
- 12/24 Hour (Military Time)
- Water Resistant as indicated on the watch
- INSTALITE – Electro Luminescent Display

SELECTING FEATURES

1. Time Telling Mode displays Hours, Minutes, Seconds, Month, Date, and Day of the Week.
2. From Time Telling Mode, press 'B' once. Stopwatch Mode appears. Press 'B' four times to return to Time Telling Mode.
3. From Time Telling Mode, press 'B' twice. Countdown Timer Mode appears. Press 'B' three times to return to Time Telling Mode.
4. From Time Telling Mode, press 'B' three times. Alarm Mode appears. Press 'B' twice to return to Time Telling Mode.
5. From Time Telling Mode, press 'B' four times. Second Time Zone Mode appears. Press 'B' once to return to Time Telling Mode.

Armitron® WATCH INSTRUCTIONS

ANALOG & DIGI-ANA

Page 2

SETTING THE TIME AND CALENDAR

Analog

1. Pull the Crown, 'E', out. The second hand stops. Rotate the Crown in either direction until the desired time is obtained. Push the Crown back in to re-engage time keeping.

Digital

1. From Time Telling Mode, press and hold 'A' until the Seconds flash. Press 'C' to zero out the seconds.

NOTE: Zeroing out 30 or more seconds automatically adds one minute to time.

2. Press 'B'. Hours flash. Press 'C' to advance the Hour.

NOTE: Pressing and holding 'C' will advance digits rapidly.

3. Press 'B'. Minutes flash. Press 'C' to advance the Minutes.

4. Press 'B'. The Year flashes. Press 'C' to advance the Year.

5. Press 'B'. Months flash. Press 'C' to advance the Month.

6. Press 'B'. The Date flashes. Press 'C' to advance the Date.

7. Press 'A' to end set sequence and return to Time Telling Mode.

12/24 HOUR (MILITARY) TIME

From Time Telling Mode, press 'C' to select either 12 Hour Time or 24 Hour (Military) Time.

STOPWATCH

1. From Time Telling Mode, press 'B' once to enter the Stopwatch Mode.

2. Press 'C' to start timing.

3. Press 'C' again to stop timing.

4. Press 'A' to reset to zero.

5. Press 'B' to return to Time Telling Mode.

SPLIT TIME

1. While in the Stopwatch Mode, press 'C' to start timing.

2. Press 'A' to measure and display the Split Times.

3. Press 'C' to stop timing at the end of the event.

4. Press 'A' to reveal the final Split Time.

5. Press 'A' again to reset to zero.

6. Press 'B' to return to Time Telling Mode.

COUNTDOWN TIMER

1. From Time Telling Mode, press 'B' twice to enter the Timer Mode.

2. Press and hold 'A'. Hours flash. Press 'C' to adjust the Hour.

3. Press 'B'. Minutes flash. Press 'C' to adjust the Minutes.

4. Press 'B'. Seconds flash. Press 'C' to adjust the Seconds.

5. When the Countdown Timer is set, press 'A' to end set sequence and return to Timer Mode.

6. Press 'C' to start the Countdown Timer.

7. If desired, press 'C' again to stop the Countdown Timer. Press 'C' again to resume the Countdown Timer.

NOTE: The Countdown timing will continue in any mode until 'C' is pressed. When the Timer has expired, the alarm will sound for about 60 seconds or until any button is pressed.

8. Press 'C' to stop the Timer.

9. Press 'B' to return to Time Telling Mode.

SETTING THE 24 HOUR ALARM

1. From Time Telling Mode, press 'B' three times to enter the Alarm Mode.

2. Press and hold 'A'. Alarm Hours flash. Press 'C' to adjust the Alarm Hour.

3. Press 'B'. Alarm Minutes flash. Press 'C' to adjust the Alarm Minutes.

4. Press 'A' to end set sequence.

5. While in Alarm Mode, press 'D' to select the Alarm Number.

6. Press 'B' to return to Time Telling Mode.

ACTIVATING THE ALARM AND HOURLY CHIME

1. While in Alarm Mode, press 'C' to activate the Alarm. The Alarm Symbol appears to indicate the Alarm will sound at the preset Alarm Time for about 60 seconds or until any button is pressed.

2. Press 'C' again to activate both the Alarm and the Hourly Chime. The Hourly Chime Symbol appears to indicate the Hourly Chime will sound every hour on the hour.

3. Press 'C' again to deactivate the Alarm.

4. Press 'C' again to deactivate the Hourly Chime.

5. Press 'B' to return to Time Telling Mode.

SECOND TIME ZONE

1. From Time Telling Mode, press 'B' four times to enter the Second Time Zone Mode.

2. Press and hold 'A'. Hours flash. Press 'C' to adjust the Hour.

3. Press 'B'. Minutes flash. Press 'C' to adjust the Minutes.

4. Press 'A' to end set sequence.

5. Press 'B' to return to Time Telling Mode.

NOTE: The Second Time Zone Clock may be used to keep track of a foreign time.

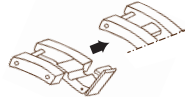
EL LIGHT FEATURE

Press 'D' in any mode to illuminate the watch face. The backlight will remain lit for 3 seconds.

NOTE: Excessive use of the light will shorten battery life.

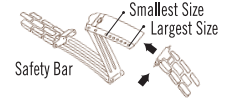
DIAGRAMS FOR ADJUSTABLE BRACELET WATCHES (For ladies watches only.)

1. CLASP EXTENDER

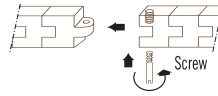


6. FOLD-OVER BUCKLE

Compress the push pin and put the ends into the suitable holes along the buckle.

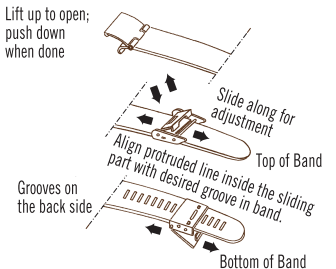


2. ONE SCREW SYSTEM



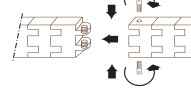
7. SLIDING BAR

Lift up to open; push down when done



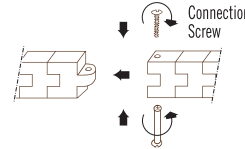
3. TWO SCREW SYSTEM

Screw in one at a time.



4. CONNECTION SYSTEM

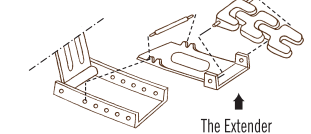
Using 2 screwdrivers, hold one side steady while turning the screw.



8. EXTENDER TO MAXIMIZE THE SIZE OF THE FOLD-OVER CLASP FOR A LARGER WRIST.

NOTE: For a smaller wrist discard the extender.

If your watch did not come with an extender, please call with the style number (which is engraved on the case back) and an extender will be shipped to you.



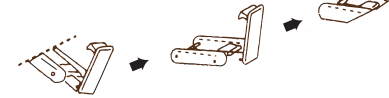
5. METAL INSERT

Push to open

Push to close

ADDITIONAL DIAGRAMS FOR ADJUSTABLE BRACELET WATCHES

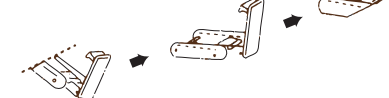
1. CLASP EXTENDER



Bottom Bracelet Bracelet Extender Top Bracelet

2. ONE SCREW SYSTEM

Screw in one at a time.



Bottom Bracelet Bracelet Extender Top Bracelet

Armitron® WATCH INSTRUCTIONS

ANALOG & DIGI-ANA

Page 3

WATER RESISTANCE

This watch is water resistant to the depth specified on the back of the watch or on the watch face. **DO NOT SUBMERGE IN WATER DEEPER THAN THAT SPECIFIED ON THE CASE BACK OF THE WATCH.** If there are no markings, either on the front dial or case back to indicate water resistance, do not submerge the watch in water. **IF THE WATCH HAS PUSH BUTTONS, DO NOT OPERATE THE PUSH BUTTONS BELOW THE SURFACE OF THE WATER.** Should water or condensation appear in the watch, immediately have the watch checked. Water can corrode electronic parts inside the case.

Water resistant watches are tested to be resistant between 3-5 atmospheres (100-165 feet). NOTE: Over time, the gaskets of the case may become worn and reduce the water resistance of the watch. A trained specialist should change the gasket and the O-ring every time the battery is changed. To avoid any unwanted condensation, watches of all specifications (water resistant or not) should not be exposed to extreme temperatures such as cold or heat.

Dear Customer:

Help your watch/jewelry retailer protect our environment by properly recycling the button cell battery in your watch. Professional jewelers and watch retailers are best equipped to replace the battery in your watch without damage to the watch case and movement inside. They have specialized tools and experience to do the job properly. Inexperienced people can scar the case and damage the water resistant seal, **voiding your warranty.**

It is important to recycle your watch battery in an environmentally safe way. Watch batteries contain very small amounts of mercury, which is required to prevent corrosion of the battery and damage to your watch. There is no danger to you or your watch from the mercury because it is in the sealed battery, non the less batteries should be disposed of properly. Your professional watch/jewelry retailer is the best person to do this for you. These professionals collect used batteries and recycle them through licensed waste management companies. Do our environment and your watch a favor, ask your watch or jewelry professional to replace your battery when it expires.

CHANGING THE BATTERY

Replace the batteries when the watch becomes slow or does not operate. It is not necessary to return your watch to Armitron for battery replacement. It is recommended that you bring your watch to a local jeweler. Should you choose to change your watch battery please remember these important facts:

1. Before removing the battery be sure to denote polarity so that the new battery is installed exactly the same way.
2. Replace with same or equivalent battery.

NOTE: Batteries are not covered under the warranty.

USE OUR NATIONWIDE SERVICE CENTERS. YOU CANNOT RETURN WATCH FOR SERVICE WHERE IT WAS PURCHASED.

If your watch requires cleaning, lubrication, battery changing or needs a crystal replaced, Armitron approved Service Centers are available in your area. These repair facilities use Armitron parts and components to assure quality and future performance. Free estimates are available in advance, should you need servicing or repairs not covered under the warranty. Repairs covered under the warranty may require proof of purchase, so retain the purchase receipt.

TO RETURN YOUR WATCH FOR SERVICING:

Please call (718) 482-4195 for a listing of all approved and authorized Service Stations and locations, or visit our website at WWW.ARMITRON.COM.

YOUR WATCH SHOULD NOT BE RETURNED TO THE PLACE OF PURCHASE.

Carefully pack your watch in a sturdy box (do not send in a gift box for same will not be returned) and mail to the nearest approved authorized Service Station.

When using mail service there is a possibility of loss of merchandise. It is therefore recommended that you insure the watch and request a return receipt. If you do not receive a receipt of delivery within a reasonable amount of time, start a tracer through the originating post office. Never include a special watch band or any other article of personal value in your shipment.

LIMITED WARRANTY

This Armitron Watch is warranted to you, the owner, for your lifetime against all defects in material or workmanship. This warranty does not apply to normal wear and tear or abuse and excludes batteries, case, strap, crystal, or bracelet. In the event of a defect or malfunction of the movement within this period it will be repaired or replaced, at our option, provided that it is returned prepaid with a check or money order for \$9.95 to cover the cost of handling and return postage. This charge does not apply to California residents. (This is not a repair charge.) **DO NOT SEND CASH.** No additional charge will be made unless additional servicing is necessary for reasons beyond our control such as accident, misuse, neglect or replacement of parts not warranted is required such as case, crystal, strap, bracelet or batteries in which event a moderate charge will be made.

The movement of any timepiece requires periodic cleaning/timing which is not a defect and, as such not warranted. After one year from the date of purchase each cleaning/timing with be performed as required without charging a fee in excess of the specified \$9.95 handling charge. The above remedy is exclusive. Armitron shall not be liable for any incidental or consequential damages. Should any other part of your watch require repair, please use our Service Center for quick and inexpensive repairs on your watch.

This warranty gives you specific legal rights and you may also have other rights which may vary from state to state. Some states do not allow limitations on how long an implied warranty lasts, or the exclusion or limitation of incidental or consequential damages, so the above limitations and exclusions may not apply to you. In the event of a problem with warranty service or performance, you may be able to go to Small Claims Court, a State Court or a Federal District Court.

CALIFORNIA RESIDENTS ONLY!!

There is no handling charge for in warranty service. Charges apply only for **NON-WARRANTY ITEMS** such as cleaning after one year and other routine maintenance.