

ARMITRON®

INSTRUCTIONS AND LIMITED LIFETIME WARRANTY

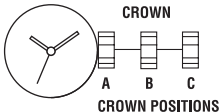
ANALOG

VISIT US AT OUR WEBSITE
www.armitron.com

ANALOG WATCH INSTRUCTIONS

SETTING THE WATCH

These instructions apply to a variety of watch styles. To change the time, day or date on your analog watch simply follow the accompanying instructions according to your specific style.



A. NEUTRAL POSITION: This is the normal operating position of the watch in which the crown is free to turn in either direction without any affect on the time.

B. POSITION TO SET THE DATE (for watches with date windows)

C. POSITION TO SET THE TIME

SETTING THE TIME ON STANDARD ANALOG WATCH STYLES

NOTE: The standard style has no calendar or day/date windows on the dial and, unlike the adjacent diagram, has only 2 crown positions: **A** (closed) and **C** (open).

To change the time, pull the crown out all the way until it stops (position **C**). Rotate the crown in either direction until desired time is obtained. Next, push the crown all the way back to position **A** to re-engage time keeping. (If watch has a second hand, it will begin to move.)

SETTING THE TIME ON CALENDAR AND DAY/DATE WATCH STYLES

For time setting: Follow the above instructions.

SETTING THE DATE ON CALENDAR WATCHES

If your watch has a date window only, pull the crown out to position **B** (see diagram) and turn the crown in either a

clockwise or counter clockwise direction (depending on watch style). Continue to rotate crown until desired date is obtained. Push the crown all the way back to position **A** to re-engage time keeping.

SETTING THE DAY/DATE

If your watch has a day/date window, pull the crown out to position **B** (see diagram). Rotate in either a clockwise or counter clockwise direction (depending on watch style) to change the day or the date. Each turn of the crown will advance the day or date respectively. If the day does not advance using this method, pull out the crown to position **C**

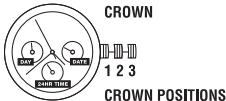
and rotate until the time advances each 24 hour period. Continue to rotate the crown until desired day is obtained. After the correct time has been set, push the crown all the way back to position **A** to re-engage time keeping.

NOTE: During normal time keeping (watch running with crown in position **A**) the day and/or date will advance between the hours of 11pm and 5am. Please keep this in mind when setting the watch.

ANALOG WATCH STYLES WITH SUBDIAL

FEATURES

- Hours, minutes, and seconds
- Days of the week, date, and 24 hour military time sub dials
- Water resistant as indicated on the watch



SETTING THE TIME, DAY AND DATE ON MULTI-FUNCTION MODELS

TO ADVANCE THE HOURS AND MINUTES

Pull the crown out to position **3** when the second hand reaches the 12 o'clock position. The second hand should stop at the 12 o'clock position. Next, turn the crown clockwise to advance the hour and minute hands to the desired time. When setting the minute hand, put it 5 minutes later than the time to be set and turn it back to the correct time. Note that the 24 hour military sub dial time zone also changes at the time of setting. Make sure that the 24 hour

military time zone corresponds to the correct AM/PM time. Push the crown **all** the way back to position **1** when the desired time is obtained.

TO ADVANCE THE DAY

Pull the crown out to position **3** and turn **clockwise**. Each **full 24 hour turn will** advance the day zone by one **full day**. Make sure that you then set the correct time worth the corresponding 24 hour military time. Push the crown **all** the way back to position **1** when desired day and time is obtained.

TO ADVANCE THE DATE

Pull the crown out to position **2**. Rotate the crown counter clockwise to advance the date. Push the crown all the way back to position **1** when desired date is obtained. Do not set the date between 9PM and midnight as it will not change correctly.

THE AUTOMATIC COLLECTION

The Automatic Self-Winding mechanical Watch (since it is not operating by battery) must be wound at least six or seven times before you wear it. After that, your daily activity should wind the watch sufficiently to keep it running at night when it is not being worn. If your normal daily activity is not sufficient, occasional supplementary manual winding may be necessary. It is suggested that your mechanical watch be cleaned and oiled periodically to insure optimum performance. As this is a mechanical watch, quartz watch accuracy cannot be expected.

ADJUSTING THE TIME

Pull the crown from position **1** to position **2**, wind it clockwise or counter clockwise until it shows the desired time. After setting the time, push the crown back to position.

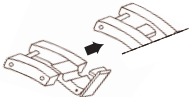


ACCELERATING ENERGY OF THE WATCH

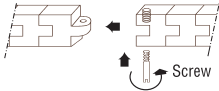
Wind the crown clockwise at position **1** until energy is conserved.

DIAGRAMS FOR ADJUSTABLE BRACELET WATCHES

1. Clasp extender

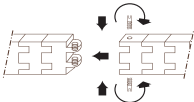


2. One Screw System



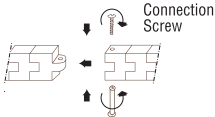
3. Two Screw System

Screw in one at a time.



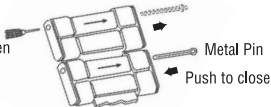
4. Connection System

Using 2 screwdrivers, hold one side steady while turning the screw.



5. Hairclip Pin

Push to open



Turn over the watch to look for arrows on the underside of the links, showing you which way you need to push the pin out of the link. Use a pin remover tool to push out the “hair clip pin” from the hole located on the side of the link. After the links are removed, simply follow these steps in reverse to re-assemble the bracelet.

6. Pin & Tube 1

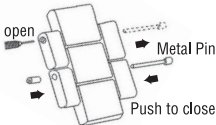


Side view "B"
of Link



Side view "A"
of Link

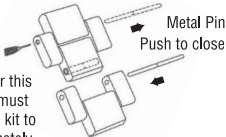
Push to open



Check the side edge of the watch link to determine which side of the link is "A" or "B." Take a pin remover tool and push out the pin from the hole located on side "B." After the desired links are removed, simply follow these steps in reverse to re-assemble the bracelet.

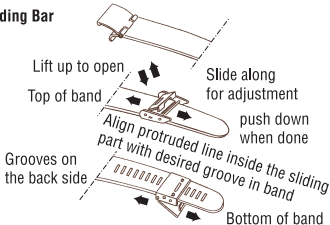
7. Pin & Tube 2

Push to open



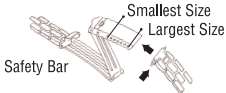
In order to adjust links for this watch construction, you must switch the pin on the tool kit to the longest pin (approximately 10mm long) found under the tool kit. Then use the pin remover tool to push out the pins from either side of the links. After the desired links are removed, simply follow these steps in reverse to re-assemble the bracelet.

8. Sliding Bar



9. Fold-over Buckle

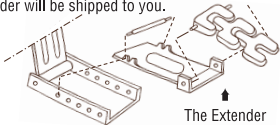
Compress the push pin and put the ends into the suitable holes along the buckle.



EXTENDER TO MAXIMIZE THE SIZE OF THE FOLD-OVER CLASP FOR A LARGER WRIST.

NOTE: For a smaller wrist discard the extender.

If your watch did not come with an extender, please call with the style number (which is engraved on the case back) and an extender will be shipped to you.



10. Quick-Release Butterfly Clasp

Fitting the watch may take some trial and error. Start by identifying the small pin that's attached to the back of the buckle. Insert the pin into a hole in the strap. For thicker wrists, use the holes closer to the end of the strap or, for thinner wrists, closer to the watch.

Please see the diagrams on the following page.

10. Quick-Release Butterfly Clasp

Pull down the back of the sizing clasp to release. Adjust as needed, then push it back to secure.

Push on both sides to open clasp.



WATER RESISTANCE

This watch is water resistant to the depth specified on the back of the watch or on the watch face. **DO NOT SUBMERGE IN WATER DEEPER THAN THAT SPECIFIED ON THE CASE BACK OF THE WATCH.** If there are no markings, either on the front dial or case back to indicate water resistance, do not submerge the watch in water. **IF THE WATCH HAS PUSH BUTTONS, DO NOT OPERATE THE PUSH BUTTONS BELOW THE SURFACE OF THE WATER.** Should water or condensation appear in the watch, immediately have the watch checked.

Water can corrode electronic parts inside the case. Water resistant watches are tested to be resistant between 3-5 atmospheres (100-165 feet).

NOTE: Over time, the gaskets of the case may become worn and reduce the water resistance of the watch. A trained specialist should change the gasket and the O-ring every time the battery is changed. To avoid any unwanted condensation, watches of all specifications (water resistant or not) should not be exposed to extreme temperatures such as cold or heat.

Dear Customer:

Help your watch/jewelry retailer protect our environment by properly recycling the button cell battery in your watch. Professional jewelers and watch retailers are best equipped to replace the battery in your watch without damage to the watch case and movement inside. They have specialized tools and experience to do the job properly. Inexperienced people can scar the case and damage the water resistant seal, **voiding your warranty.**

It is important to recycle your watch battery in an environmentally safe way. Watch batteries contain very small

amounts of mercury, which is required to prevent corrosion of the battery and damage to your watch. There is no danger to you or your watch from the mercury because it is in the sealed battery, non the less batteries should be disposed of properly. Your professional watch/jewelry retailer is the best person to do this for you. These professionals collect used batteries and recycle them through licensed waste management companies.

Do our environment and your watch a favor, ask your watch or jewelry professional to replace your battery when it expires.

CHANGING THE BATTERY

Replace the batteries when the watch becomes slow or does not operate. It is not necessary to return your watch to Armitron for battery replacement. It is recommended that you bring your watch to a local jeweler. Should you choose to change your watch battery please remember these important facts:

1. Before removing the battery be sure to denote polarity so that the new battery is installed exactly the same way.
2. Replace with same or equivalent battery.

NOTE: Batteries are not covered under the warranty.

**USE OUR NATIONWIDE SERVICE CENTERS.
YOU CANNOT RETURN WATCH FOR SERVICE WHERE IT
WAS PURCHASED.**

If your watch requires cleaning, lubrication, battery changing or needs a crystal replaced; Armitron approved service centers are available in your area. These repair facilities use Armitron parts and components to ensure quality and future performance. Free estimates are available in advance should your watch need servicing or repairs not covered under the warranty. Repairs covered under the warranty may require proof of purchase, so it is advised to retain your purchase receipt.

TO RETURN YOUR WATCH FOR SERVICING:

Please call 718-482-4195 for a listing of all approved and authorized service centers and locations or visit our website at www.armitron.com.

YOUR WATCH SHOULD NOT BE RETURNED TO THE PLACE OF PURCHASE

Carefully pack your watch in a sturdy box (do not send in a gift box; it will not be returned to you) and mail to the nearest approved authorized service station. When using mail service there is a possibility of loss of merchandise.

It is therefore recommended that you insure the watch and request a return receipt. If you do not receive a receipt of delivery within a reasonable amount of time, start a tracer through the originating post office. Never include a special watch band or any other article of personal value in your shipment.

LIMITED WARRANTY

This Armitron watch is warranted to you, the owner, for your lifetime against all defects in material or workmanship. This warranty does not apply to normal wear and tear or abuse and excludes case, strap, crystals, or bracelet. In the event of a

defect or malfunction of the movement within this period it will be repaired or replaced, at our option, provided that it is returned prepaid with a check or money order for \$9.95 to cover the cost of handling and return postage. This change does not apply to California residents. (This is not a repair charge.) DO NOT SEND CASH. No additional charges will be made unless additional servicing is necessary for reasons beyond our control such as accident, misuse, neglect or replacement of parts not warranted is required such as case, crystal, strap, or bracelet in which event a moderate charge will be made. The movement of any timepiece requires

periodic cleaning/timing which is not a defect and, as such not warranted. After one year from the date of purchase each cleaning/timing will be performed as required without charging a fee in excess of the specified \$9.95 handling charge. The above remedy is exclusive. Armitron shall not be liable for any incidental or consequential damages. Should any other part of your watch require repair, please use our service center for quick and inexpensive repairs on your watch.

This warranty gives you specific legal rights and you may also have other rights which may vary from state to state. Some

states do not allow limitations on how long an implied warranty lasts, or the exclusion or limitation of incidental or consequential damages, so the above limitation and exclusions may not apply to you. In the event of a problem with warranty service or performance, you may be able to go to Small Claims Court, a State Court or Federal District Court.

*SPECIFICATIONS SUBJECT TO CHANGE WITHOUT
PRIOR NOTICE FOR PRODUCT IMPROVEMENT.
DESIGN MAY VARY DEPENDING ON THE MODEL.

For the latest information on sizing, service and repairs,
please go to:

www.ARMITRON.com



©2015 E. GLUCK CORPORATION