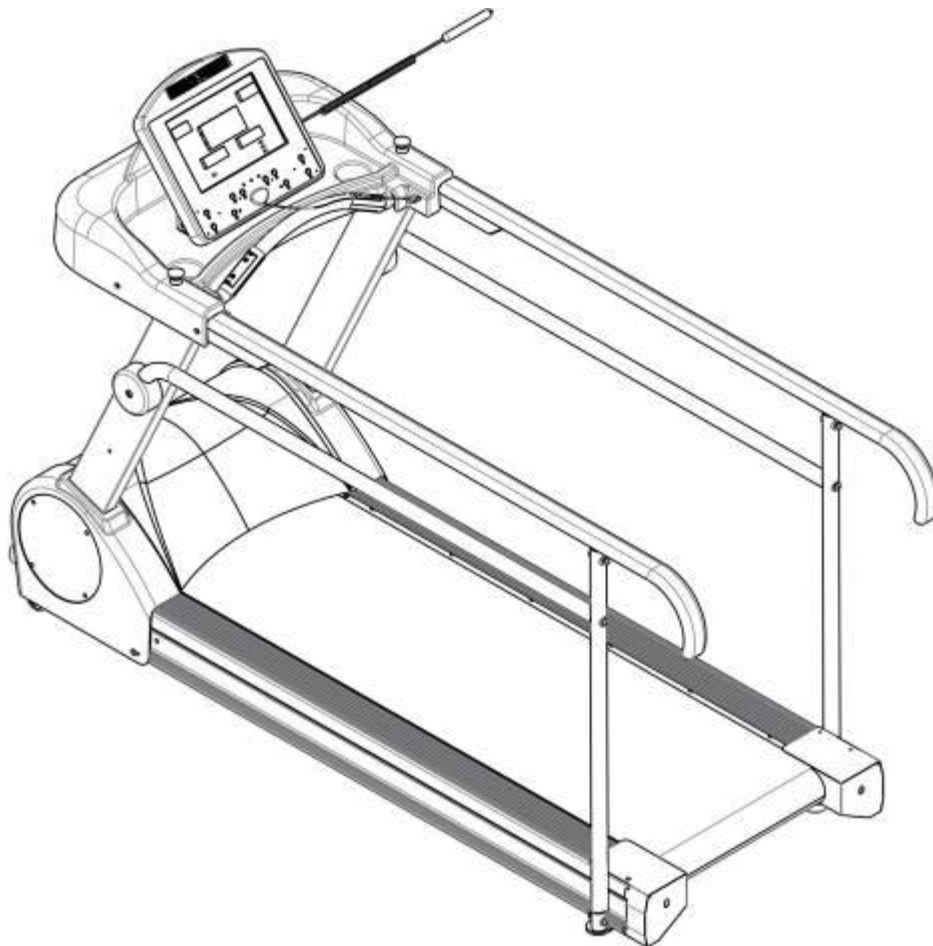




Owner's Manual
V.3



HealthCare International, Inc.
PO Box 1509, Langley, WA 98260
www.HCIFitness.com - sales@hcfitness.com
P: (360) 321-7090 or (800) 398-9121

Table of Contents

Safety Precautions 2

Warranty Information 3

Assembly Instructions 5

PhysioMill Display Console 9

Button Functions 10

General Maintenance 10

Exploded Diagram 11

Parts List 12

Safety Precautions

This exercise equipment was designed and built for optimum safety. However, certain precautions apply whenever you operate a piece of exercise equipment. Be sure to read the entire manual before assembly and operation of this machine.

Also, please note the following **safety precautions**:

1. Read all instructions carefully before using the machine.
2. Consult your physician or other health care professional before beginning this or any type of exercise program.
3. Always wear proper exercise apparel when using the machine.
4. If at any time you feel faint, light-headed or dizzy while operating the machine, stop exercise immediately. You should also stop exercising if you are experiencing pain or pressure.
5. Keep children and pets away from the machine while in use.
6. Only one person can use the machine at a time.
7. Make sure your machine is correctly assembled before you use it. Be sure all screws, nuts, and bolts are tightened prior to use and retighten periodically.
8. Do not operate this or any exercise equipment if it is damaged.
9. Keep hands and feet away from any moving parts. Do not insert any objects into any openings.
10. Keep clothes, jewelry and loose items away from moving parts.



NOTE:

MAXIMUM WEIGHT CAPACITY FOR THE PHYSIOMILL IS 500 LBS. (227 KGS)

WARNING:

BEFORE BEGINNING ANY EXERCISE PROGRAM CONSULT YOUR PHYSICIAN. THIS IS ESPECIALLY IMPORTANT FOR INDIVIDUALS OVER THE AGE OF 35 OR PEOPLE WITH PRE-EXISTING HEALTH PROBLEMS. READ ALL INSTRUCTIONS BEFORE USING THIS FITNESS EQUIPMENT. WE ASSUME NO RESPONSIBILITY FOR PERSONAL INJURY OR PROPERTY DAMAGE SUSTAINED BY OR THROUGH THE USE OF THIS PRODUCT.

Dear Valued Customer,

Thank you for your recent purchase of the **PhysioMill** from HCI Fitness. We believe that you have purchased one of the highest quality and affordable rehabilitation treadmills on the market today. Prior to using your new **PhysioMill** please review the owner's manual and product tips to maximize your experience.

Wishing you the best of luck in reaching your health and fitness goals!

HealthCare International is a leading supplier and distributor of innovative products for Health, Wellness, Fitness & Active Aging. Visit our website – www.HCIFitness.com for information on all of our products.

Warranty Information

(Your Serial Number is found on a white sticker at the rear base of the unit, the front of the user manual, and on the box)

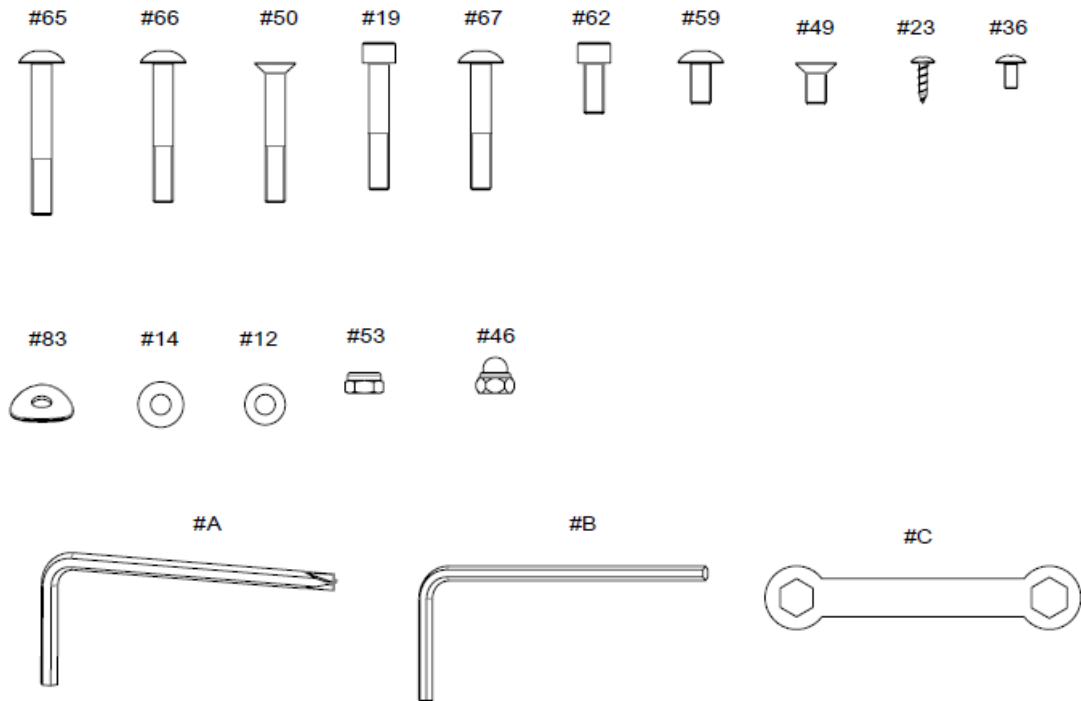
Serial #: _____ **Purchase Date:** _____

5 Year Parts Warranty, 1 Year Labor, Lifetime Main Frame

NOTE

Before you start to assemble this unit, please note that some of the parts and screws needed for assembly are already in place on the unit.

SCREW AND TOOL SET

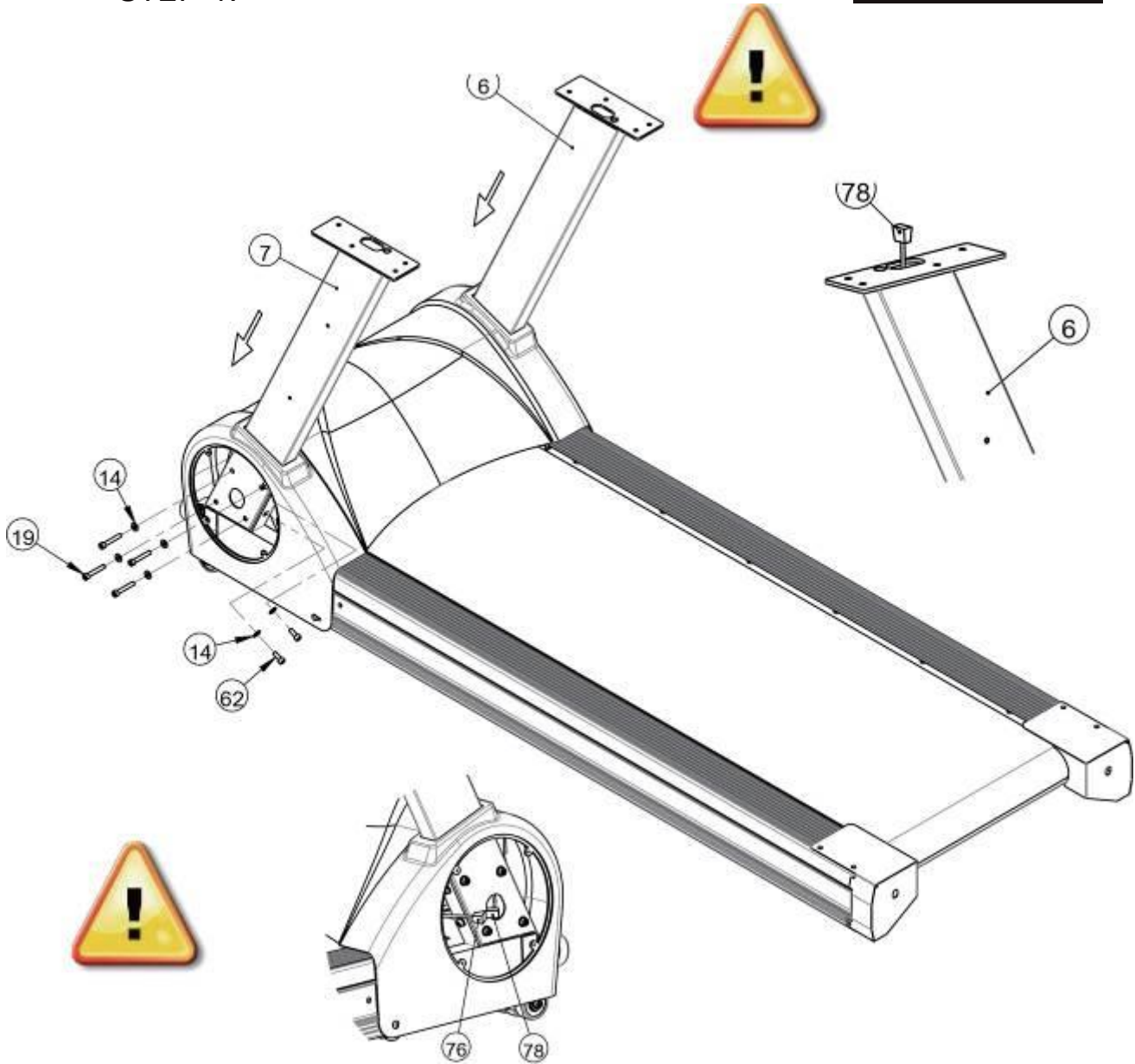


NO.	Description	Qty
065	Mushroom Head Hexagonal Bolt M8*60L	2
066	Mushroom Head Hexagonal Bolt M8*55L	2
050	Hexagonal Bolt M8*55L	4
019	Mushroom Hexagonal Bolt M8*50L	8
067	Mushroom Head Hexagonal Bolt M8*50L	4
062	Mushroom Head Hexagonal Bolt M8*20L	4
059	Mushroom Head Hexagonal Bolt M8*16L	4
049	Hexagonal Bolt M8*16L	4
023	Metal screws TP4*16L	8
036	Cross Screw M5*10L	4
083	Washer 8*25*1.5T	10
014	Washer 8*18*1.5T	20
012	Washer 8*16*1.2T	2
053	Nylon Nut M8	4
046	Nylon Nut M8	4
A	Allen Key 6 mm "+"	1
B	Allen Key 5 mm	1
C	Wrench 13*14mm	1

Assembly Instructions

STEP 1:

Wire Pinch Point:



Insert the Upright Posts (6) (7) to the main base, then loosely tighten the Hexagon Head Bolts (19) (62) and Flat Washer (14) to temporarily secure.

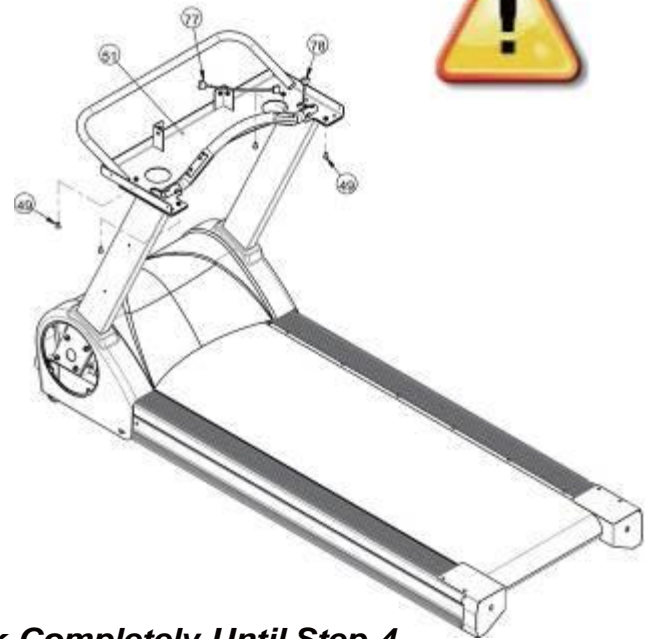
Do Not Tighten Bolts Completely Until Step 4

Wire Pinch Point:



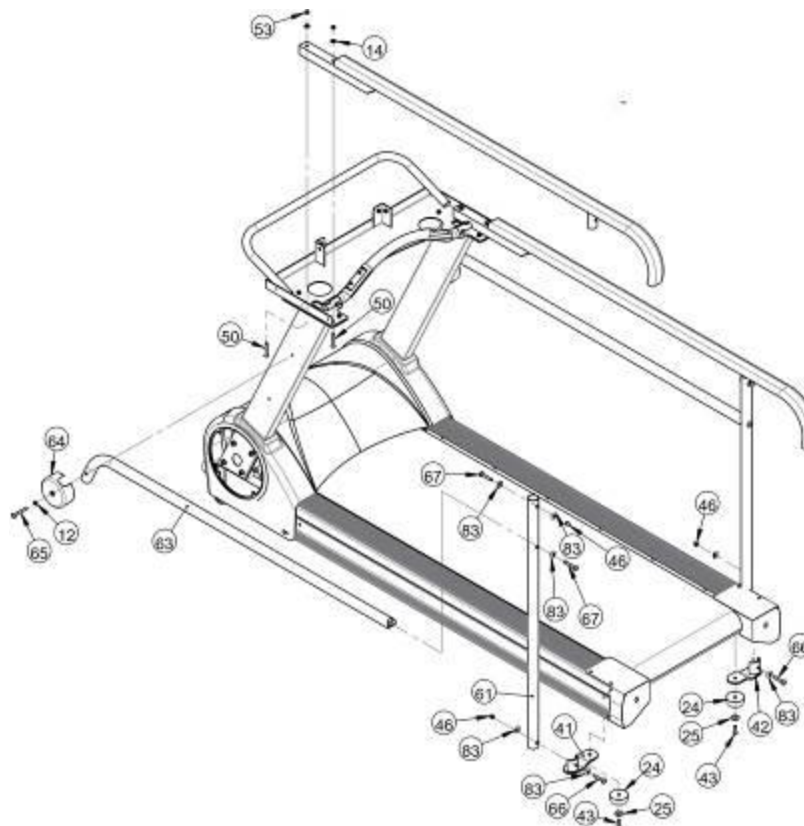
STEP 2:

1. Place Computer Rack (51) on top of Upright poles and loosely screw in the Hexagonal Bolts (49).
2. Take hold of Middle Sensor Cable Wire (78) connect with the Upper Sensor Cable Wire (77) firmly.



Do Not Tighten Computer Rack Completely Until Step 4

STEP 3:



Loosely connect the Hand Rails (52) to the computer rack with the nut on the top. Then secure the handrails to the upright posts with side caps (64), washers (12) and hex bolts (65).

STEP 4:

Completely tighten the nuts and bolts from Steps 1-3.

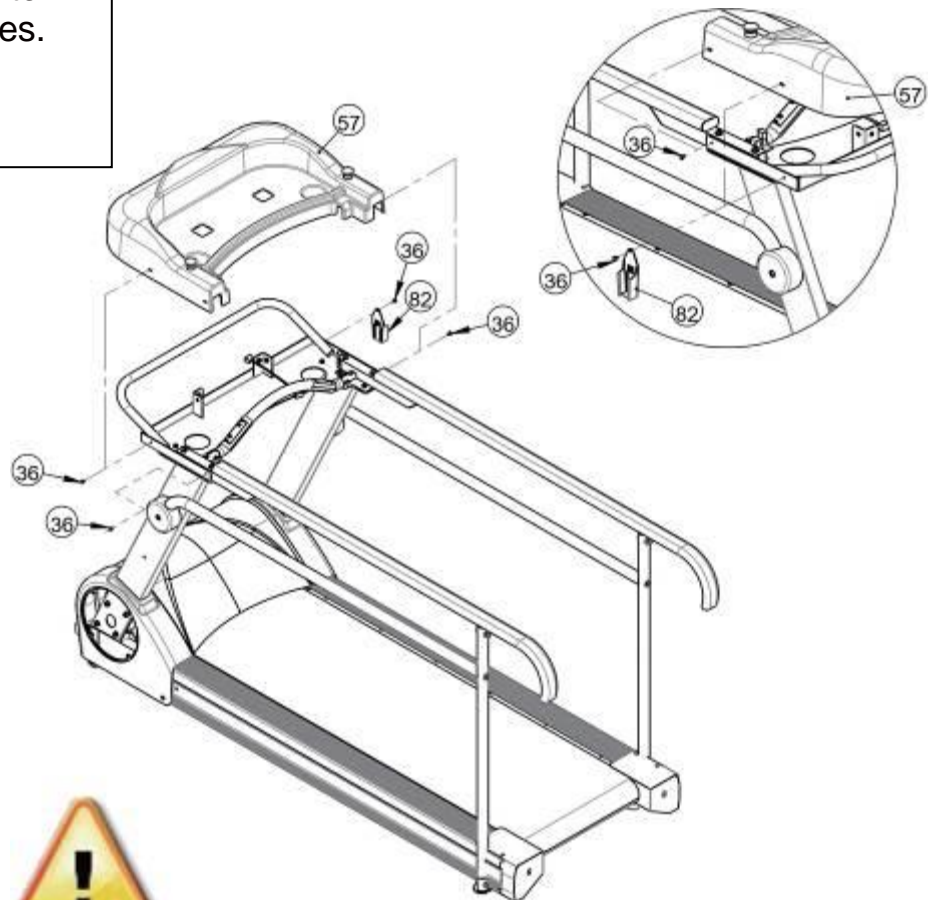
Start with Step 1 and tighten down the bolts that support the Upright Posts.

Then tighten the bolts in Step 2 that hold the computer rack in place.

Finally, tighten the nuts and bolts that secure the handrails in Step 3.

STEP 5:

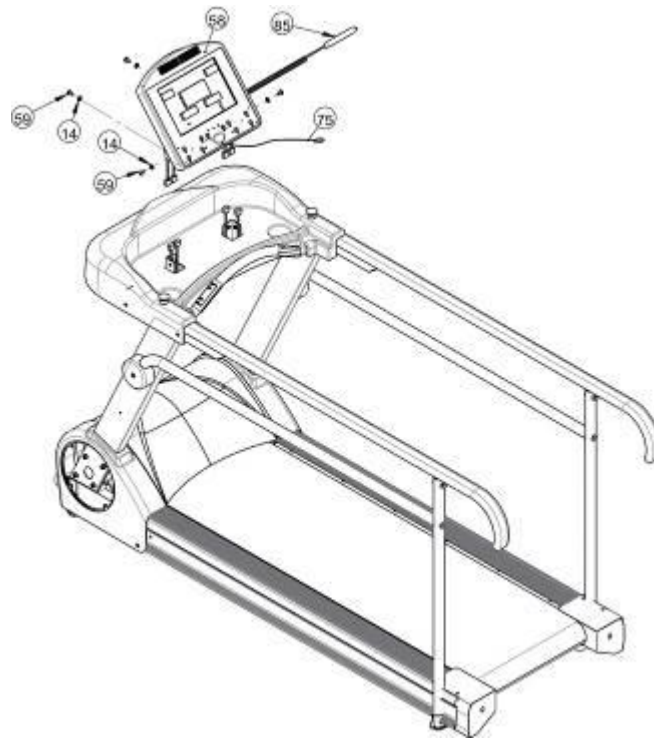
Place the display rack cover (57) as per drawing. Use screws (36) to secure the shroud. Make sure not to pinch any electrical wires.



Wire Pinch Point:



STEP 6:



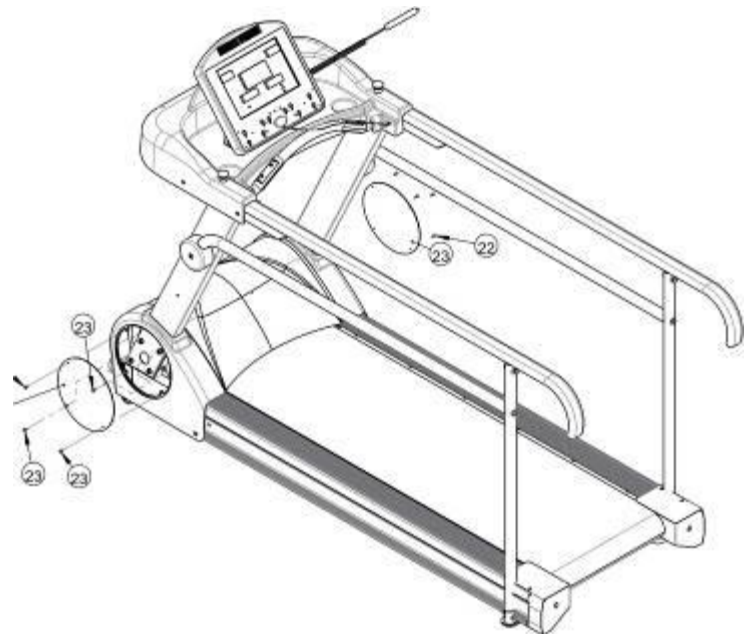
Hold the display (58) and connect the computer sensor wire with the upper pulse sensor wire in advance. Install the display on to the display brackets using the Mushroom Head Hexagonal Bolt (59) and Washer (14) screw tightly.

STEP 7:

After the treadmill is assembled, reattach the Motor Side Covers (22) with screws (23).

Your PhysioMill is now completed.

Lubricate belt before use.



Before use, please read the safety precautions carefully. Periodically retighten screws and bolts as needed.

Electrical Connection

The **PhysioMill** needs to be plugged into a standard electrical outlet. The AC adaptor is connected at the front of the unit. The power switch must be on for operation.

Treadmill Belt Lubrication

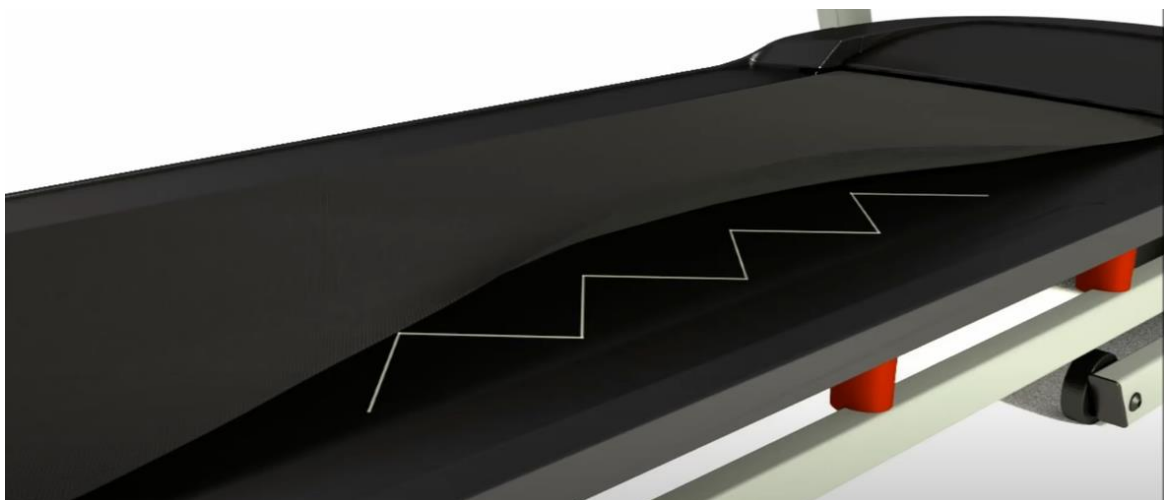
Lubricate Belt Before First Use and Every 3 Months or 130 Miles

1. Unplug PhysioMill Power from wall.
2. Loosen Treadmill Belt 2 turns on each side.
3. Apply Lubricant to the Center of the Treadmill Deck in Zig- Zag pattern.
4. Tighten Treadmill Belt 2 turns on each side
5. Plug in PhysioMill Power to wall.
6. Ensure Proper Belt Alignment
7. Walk on Treadmill for 5 Minutes to spread lubricant

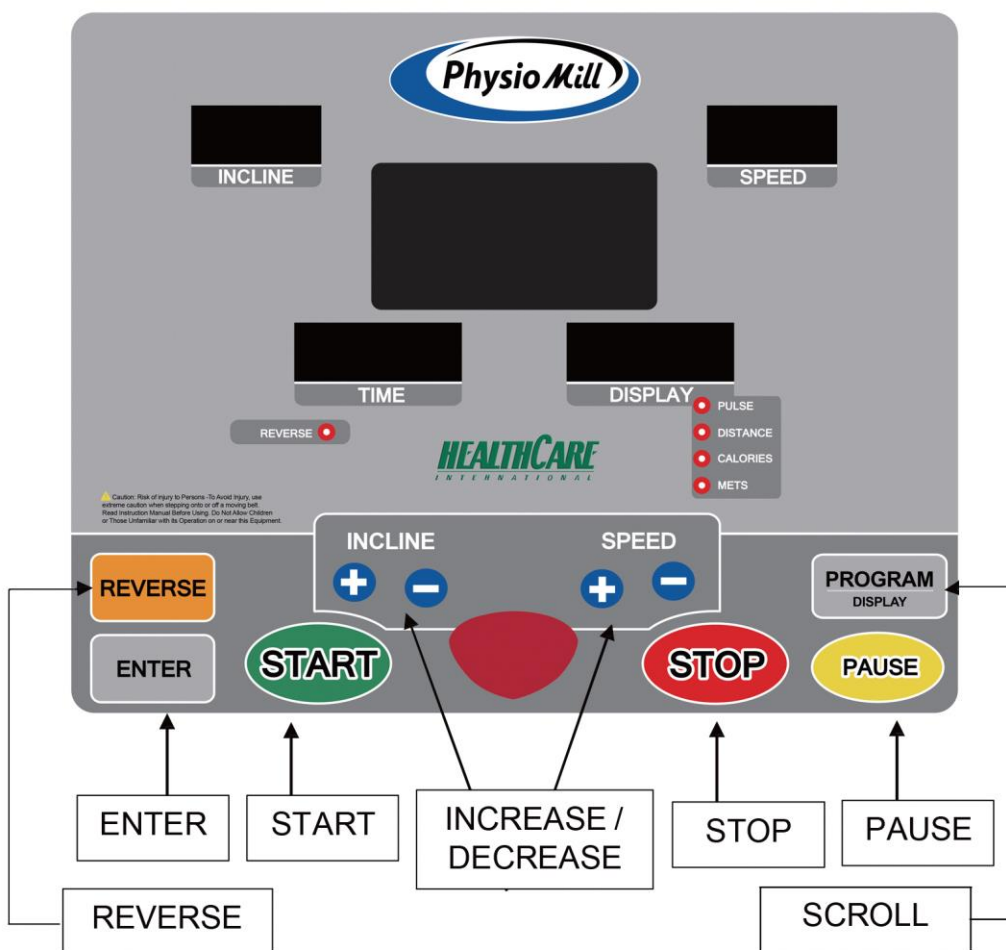
Scan below with your phone camera to watch this helpful video



Sample Image of Zig Zag Application Pattern



PhysioMill Display Console



Hand-Held Therapy Start / Stop Remote



Allows for therapists to start and stop the treadmill while performing hands on rehabilitation.

Simply press the button once to pause the session.

Then press the button again to resume the treadmill belt.

In case of an Emergency, use the Emergency Stop Button located on either side of the console to quickly stop the treadmill belt.

Button Functions

1. START BUTTON

1.1. Pressing the START button starts the treadmill.

2. STOP BUTTON

2.1. Pressing the STOP button stops the treadmill.

3. PAUSE BUTTON

3.1. Pressing the PAUSE button pauses your session.

4. [+] BUTTON

4.1. . Press the [+] button to increase values.

4.2. . Holding the [+] button will rapidly increase values.

5. [-] DOWN BUTTON

5.1. Press the [-] button to decrease values.

5.2. Holding the [-] button will rapidly decrease values.

6. DISPLAY / PROGRAMS BUTTON

6.1. Scrolls through Pulse, Distance, Calories, & METs.

6.2. PROGRAMS MN→P1→...→P12→H1→H2→MN

7. ENTER BUTTON

7.1. The ENTER button allows for data entry.

8. REVERSE BUTTON

8.1. To switch the belt direction to reverse follow this sequence.

8.1.1. Press the **PAUSE** button.

8.1.2. Press the **REVERSE** button.

8.1.3. Press the **START** button.

To Return to Forward Repeat 8.1.1 - 8.1.3

General Maintenance

1. Cleaning – Use soap and warm water or antibacterial wipes (GREY) to clean the surface of your unit.

2. Tightening - Periodically inspect your unit to ensure that all screws, nuts, and bolts are tightened and retighten if necessary. Do not over tighten

2. Belt Lubrication – Every 3 Months or 130 Miles. See page 9.

Trouble Shooting

ERROR 1 (E1):

When power on treadmill and press START key, the computer cannot read speed signal from motor in 7 seconds:

When treadmill on "RUN MODE" status, monitor display "E1" and makes "BEEP" sound if treadmill didn't read speed signal from motor in 7 seconds. ERROR1 causes: It's possible that motor speed sensor cable has been damaged; incorrect installment of position or the speed sensor cable didn't be connected correct to motor control board.

ERROR 6 (E6):

When drive the incline motor and, the computer cannot read VR value from incline motor in 6 seconds:

The monitor flashes "E6" and makes BEEP sound per second if computer didn't read VR value from incline motor in 6 seconds. ERROR6 causes: It's probably that VR sensor of incline motor has been damaged. Or 2.5pitch of 3 PIN connector didn't correctly connect to socket of motor control board. Perhaps one of the power cable of incline motor has been dropped (Power cord; UP with red color, Down with black and COM with white). Above causes could lead incline motor does not work and VR value unchanging and show E6.

Programs Operating

PROGRAM (KPH)

SPEED INCLUDE LEVEL 1	P1	P2	P3	P4
Interval 1	2.0 KPH/0 INC	2.0 KPH/0 INC	3 KPH/0 INC	3 KPH/0 INC
Interval 2	3.0 KPH/0 INC	4.0 KPH/0 INC	6 KPH/0 INC	3 KPH/0 INC
Interval 3	4.0 KPH/0 INC	6.0 KPH/0 INC	8 KPH/0 INC	5 KPH/0 INC
Interval 4	5.0 KPH/0 INC	2.0 KPH/0 INC	8 KPH/0 INC	6 KPH/0 INC
Interval 5	2.0 KPH/0 INC	4.0 KPH/0 INC	3 KPH/0 INC	7 KPH/0 INC
Interval 6	3.0 KPH/0 INC	6.0 KPH/0 INC	6 KPH/0 INC	8 KPH/0 INC
Interval 7	4.0 KPH/0 INC	2.0 KPH/0 INC	8 KPH/0 INC	6 KPH/0 INC
Interval 8	5.0 KPH/0 INC	4.0 KPH/0 INC	8 KPH/0 INC	4 KPH/0 INC
Interval 9	3.0 KPH/0 INC	6.0 KPH/0 INC	3 KPH/0 INC	3 KPH/0 INC
Interval 10	2.0 KPH/0 INC	2.0 KPH/0 INC	6 KPH/0 INC	3 KPH/0 INC
Interval 11	3.0 KPH/0 INC	4.0 KPH/0 INC	8 KPH/0 INC	5 KPH/0 INC
Interval 12	4.0 KPH/0 INC	6.0 KPH/0 INC	3 KPH/0 INC	6 KPH/0 INC
Interval 13	5.0 KPH/0 INC	2.0 KPH/0 INC	6 KPH/0 INC	7 KPH/0 INC
Interval 14	2.0 KPH/0 INC	4.0 KPH/0 INC	8 KPH/0 INC	8 KPH/0 INC
Interval 15	3.0 KPH/0 INC	6.0 KPH/0 INC	3 KPH/0 INC	6 KPH/0 INC
Interval 16	4.0 KPH/0 INC	2.0 KPH/0 INC	3 KPH/0 INC	4 KPH/0 INC

SPEED INCLUDE LEVEL 1	P5	P6	P7	P8
Interval 1	3.2 KPH/0 INC	0.2 KPH/2 INC	0.2 KPH/2 INC	0.2 KPH/3 INC
Interval 2	3.2 KPH/2 INC	0.2 KPH/3 INC	0.2 KPH/4 INC	0.2 KPH/6 INC
Interval 3	3.2 KPH/4 INC	0.2 KPH/4 INC	0.2 KPH/6 INC	0.2 KPH/6 INC
Interval 4	3.2 KPH/6 INC	0.2 KPH/5 INC	0.2 KPH/2 INC	0.2 KPH/8 INC
Interval 5	3.2 KPH/8 INC	0.2 KPH/2 INC	0.2 KPH/4 INC	0.2 KPH/8 INC
Interval 6	3.2 KPH/10 INC	0.2 KPH/3 INC	0.2 KPH/6 INC	0.2 KPH/3 INC

PROGRAM (MPH)

SPEED INCLUDE LEVEL 1	P1	P2	P3	P4
Interval 1	1.2 MPH/0 INC	1.2 MPH/0 INC	1.8 MPH/0 INC	1.8 MPH/0 INC
Interval 2	1.8 MPH/0 INC	2.5 MPH/0 INC	3.7 MPH/0 INC	1.8 MPH/0 INC
Interval 3	2.5 MPH/0 INC	3.7 MPH/0 INC	5 MPH/0 INC	3.1 MPH/0 INC
Interval 4	3.1 MPH/0 INC	1.2 MPH/0 INC	5 MPH/0 INC	3.7 MPH/0 INC
Interval 5	1.2 MPH/0 INC	2.5 MPH/0 INC	1.8 MPH/0 INC	4.3 MPH/0 INC
Interval 6	1.8 MPH/0 INC	3.7 MPH/0 INC	3.7 MPH/0 INC	5 MPH/0 INC
Interval 7	2.5 MPH/0 INC	1.2 MPH/0 INC	5 MPH/0 INC	3.7 MPH/0 INC
Interval 8	3.1 MPH/0 INC	2.5 MPH/0 INC	5 MPH/0 INC	2.5 MPH/0 INC
Interval 9	1.8 MPH/0 INC	3.7 MPH/0 INC	1.8 MPH/0 INC	1.8 MPH/0 INC
Interval 10	1.2 MPH/0 INC	1.2 MPH/0 INC	3.7 MPH/0 INC	1.8 MPH/0 INC
Interval 11	1.8 MPH/0 INC	2.5 MPH/0 INC	5 MPH/0 INC	3.1 MPH/0 INC
Interval 12	2.5 MPH/0 INC	3.7 MPH/0 INC	1.8 MPH/0 INC	3.7 MPH/0 INC
Interval 13	3.1 MPH/0 INC	1.2 MPH/0 INC	3.7 MPH/0 INC	4.3 MPH/0 INC
Interval 14	1.2 MPH/0 INC	2.5 MPH/0 INC	5 MPH/0 INC	5 MPH/0 INC
Interval 15	1.8 MPH/0 INC	3.7 MPH/0 INC	1.8 MPH/0 INC	3.7 MPH/0 INC
Interval 16	2.5 MPH/0 INC	1.2 MPH/0 INC	1.8 MPH/0 INC	2.5 MPH/0 INC

SPEED INCLUDE LEVEL 1	P5	P6	P7	P8
Interval 1	2 MPH/0 INC	0.1 MPH/2 INC	0.1 MPH/2 INC	0.1 MPH/3 INC
Interval 2	2 MPH/2 INC	0.1 MPH/3 INC	0.1 MPH/4 INC	0.1 MPH/6 INC
Interval 3	2 MPH/4 INC	0.1 MPH/4 INC	0.1 MPH/6 INC	0.1 MPH/6 INC
Interval 4	2 MPH/6 INC	0.1 MPH/5 INC	0.1 MPH/2 INC	0.1 MPH/8 INC
Interval 5	2 MPH/8 INC	0.1 MPH/2 INC	0.1 MPH/4 INC	0.1 MPH/8 INC
Interval 6	2 MPH/10 INC	0.1 MPH/3 INC	0.1 MPH/6 INC	0.1 MPH/3 INC

Interval 7	3.2 KPH/12 INC	0.2 KPH/4 INC	0.2 KPH/2 INC	0.2 KPH/6 INC
Interval 8	3.2 KPH/14 INC	0.2 KPH/5 INC	0.2 KPH/4 INC	0.2 KPH/6 INC
Interval 9	3.2 KPH/15 INC	0.2 KPH/7 INC	0.2 KPH/6 INC	0.2 KPH/8 INC
Interval 10	3.2 KPH/15 INC	0.2 KPH/8 INC	0.2 KPH/2 INC	0.2 KPH/8 INC
Interval 11	3.2 KPH/15 INC	0.2 KPH/2 INC	0.2 KPH/4 INC	0.2 KPH/6 INC
Interval 12	3.2 KPH/15 INC	0.2 KPH/3 INC	0.2 KPH/6 INC	0.2 KPH/6 INC
Interval 13	3.2 KPH/15 INC	0.2 KPH/4 INC	0.2 KPH/2 INC	0.2 KPH/8 INC
Interval 14	3.2 KPH/15 INC	0.2 KPH/5 INC	0.2 KPH/4 INC	0.2 KPH/8 INC
Interval 15	3.2 KPH/15 INC	0.2 KPH/2 INC	0.2 KPH/6 INC	0.2 KPH/3 INC
Interval 16	3.2 KPH/15 INC	0.2 KPH/3 INC	0.2 KPH/2 INC	0.2 KPH/6 INC

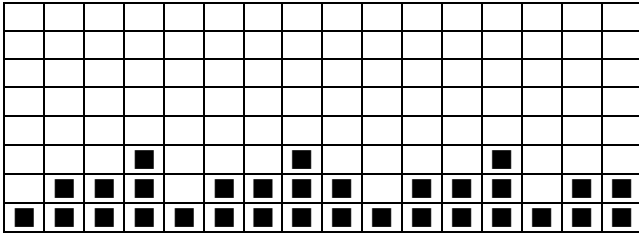
Interval 7	2 MPH/12 INC	0.1 MPH/4 INC	0.1 MPH/2 INC	0.1 MPH/6 INC
Interval 8	2 MPH/14 INC	0.1 MPH/5 INC	0.1 MPH/4 INC	0.1 MPH/6 INC
Interval 9	2 MPH/15 INC	0.1 MPH/7 INC	0.1 MPH/6 INC	0.1 MPH/8 INC
Interval 10	2 MPH/15 INC	0.1 MPH/8 INC	0.1 MPH/2 INC	0.1 MPH/8 INC
Interval 11	2 MPH/15 INC	0.1 MPH/2 INC	0.1 MPH/4 INC	0.1 MPH/6 INC
Interval 12	2 MPH/15 INC	0.1 MPH/3 INC	0.1 MPH/6 INC	0.1 MPH/6 INC
Interval 13	2 MPH/15 INC	0.1 MPH/4 INC	0.1 MPH/2 INC	0.1 MPH/8 INC
Interval 14	2 MPH/15 INC	0.1 MPH/5 INC	0.1 MPH/4 INC	0.1 MPH/8 INC
Interval 15	2 MPH/15 INC	0.1 MPH/2 INC	0.1 MPH/6 INC	0.1 MPH/3 INC
Interval 16	2 MPH/15 INC	0.1 MPH/3 INC	0.1 MPH/2 INC	0.1 MPH/6 INC

SPEED INCLUDE LEVEL 1	P9	P10	P11	P12
Interval 1	3 KPH/2 INC	2 KPH/2 INC	2 KPH/2 INC	2 KPH/3 INC
Interval 2	3 KPH/4 INC	2 KPH/3 INC	2 KPH/4 INC	6 KPH/6 INC
Interval 3	5 KPH/6 INC	5 KPH/4 INC	8 KPH/6 INC	8 KPH/6 INC
Interval 4	5 KPH/8 INC	6 KPH/5 INC	2 KPH/2 INC	6 KPH/8 INC
Interval 5	3 KPH/8 INC	7 KPH/2 INC	2 KPH/4 INC	2 KPH/8 INC
Interval 6	3 KPH/10 INC	5 KPH/3 INC	8 KPH/6 INC	6 KPH/3 INC
Interval 7	5 KPH/6 INC	6 KPH/4 INC	2 KPH/2 INC	8 KPH/6 INC
Interval 8	5 KPH/4 INC	7 KPH/5 INC	2 KPH/4 INC	6 KPH/6 INC
Interval 9	3 KPH/2 INC	5 KPH/7 INC	8 KPH/6 INC	2 KPH/8 INC
Interval 10	3 KPH/2 INC	6 KPH/8 INC	2 KPH/2 INC	6 KPH/8 INC
Interval 11	5 KPH/4 INC	7 KPH/2 INC	2 KPH/4 INC	8 KPH/6 INC
Interval 12	5 KPH/6 INC	7 KPH/3 INC	8 KPH/6 INC	6 KPH/6 INC
Interval 13	3 KPH/8 INC	5 KPH/4 INC	2 KPH/2 INC	2 KPH/8 INC
Interval 14	3 KPH/8 INC	6 KPH/5 INC	2 KPH/4 INC	6 KPH/8 INC
Interval 15	5 KPH/6 INC	8 KPH/2 INC	8 KPH/6 INC	8 KPH/3 INC
Interval 16	5 KPH/4 INC	9 KPH/3 INC	2 KPH/2 INC	6 KPH/6 INC

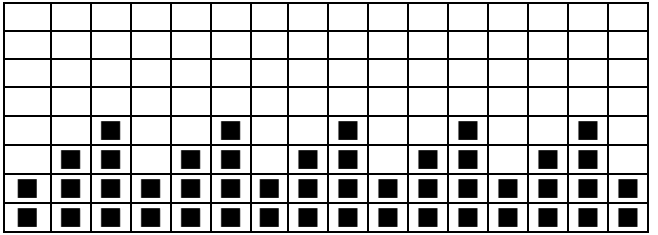
SPEED INCLUDE LEVEL 1	P9	P10	P11	P12
Interval 1	1.8 MPH/2 INC	1.2 MPH/2 INC	1.2 MPH/2 INC	1.2 MPH/3 INC
Interval 2	1.8 MPH/4 INC	1.2 MPH/3 INC	1.2 MPH/4 INC	3.7 MPH/6 INC
Interval 3	3.1 MPH/6 INC	3.1 MPH/4 INC	5 MPH/6 INC	5 MPH/6 INC
Interval 4	3.1 MPH/8 INC	3.7 MPH/5 INC	1.2 MPH/2 INC	3.7 MPH/8 INC
Interval 5	1.8 MPH/8 INC	4.3 MPH/2 INC	1.2 MPH/4 INC	1.2 MPH/8 INC
Interval 6	1.8 MPH/10 INC	3.1 MPH/3 INC	5 MPH/6 INC	3.7 MPH/3 INC
Interval 7	3.1 MPH/6 INC	3.7 MPH/4 INC	1.2 MPH/2 INC	5 MPH/6 INC
Interval 8	3.1 MPH/4 INC	4.3 MPH/5 INC	1.2 MPH/4 INC	3.7 MPH/6 INC
Interval 9	1.8 MPH/2 INC	3.1 MPH/7 INC	5 MPH/6 INC	1.2 MPH/8 INC
Interval 10	1.8 MPH/2 INC	3.7 MPH/8 INC	1.2 MPH/2 INC	3.7 MPH/8 INC
Interval 11	3.1 MPH/4 INC	4.3 MPH/2 INC	1.2 MPH/4 INC	5 MPH/6 INC
Interval 12	3.1 MPH/6 INC	4.3 MPH/3 INC	5 MPH/6 INC	3.7 MPH/6 INC
Interval 13	1.8 MPH/8 INC	3.1 MPH/4 INC	1.2 MPH/2 INC	1.2 MPH/8 INC
Interval 14	1.8 MPH/8 INC	3.7 MPH/5 INC	1.2 MPH/4 INC	3.7 MPH/8 INC
Interval 15	3.1 MPH/6 INC	5 MPH/2 INC	5 MPH/6 INC	5 MPH/3 INC
Interval 16	3.1 MPH/4 INC	5.6 MPH/3 INC	1.2 MPH/2 INC	3.7 MPH/6 INC

Programs Operating

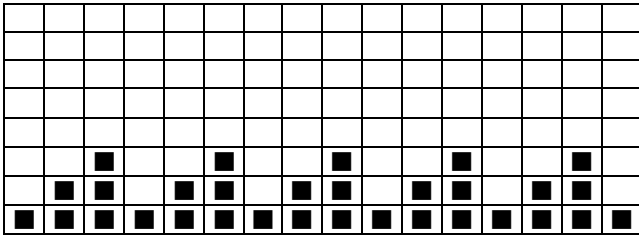
P1



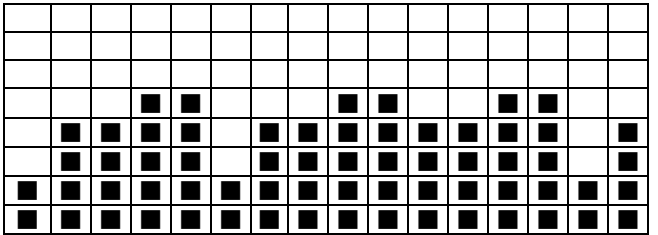
P7



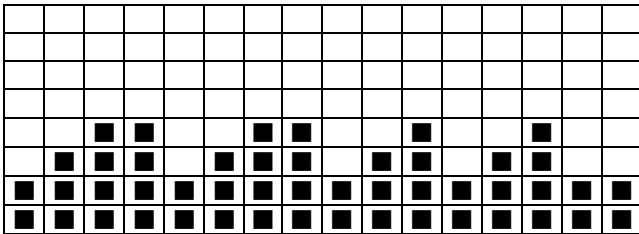
P2



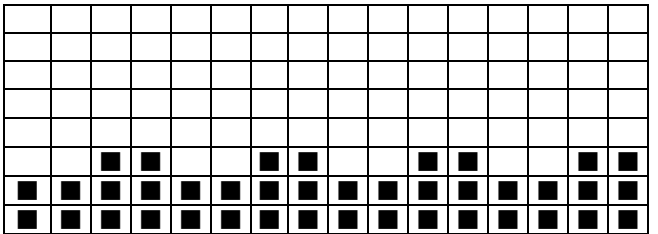
P8



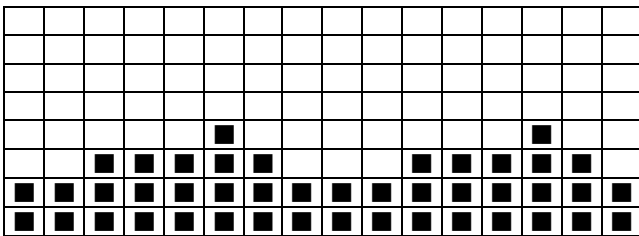
P3



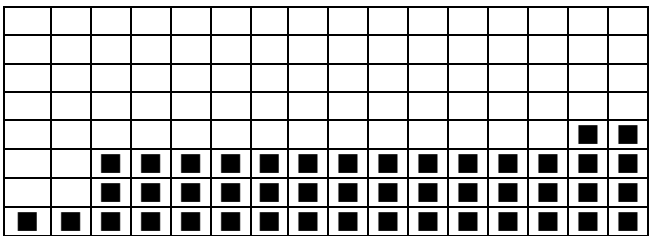
P9



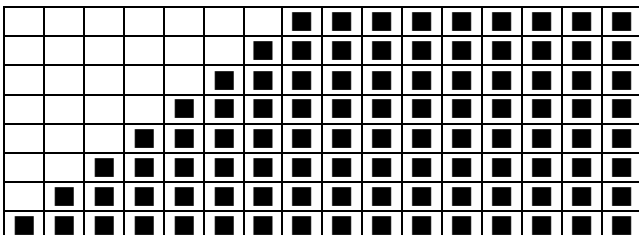
P4



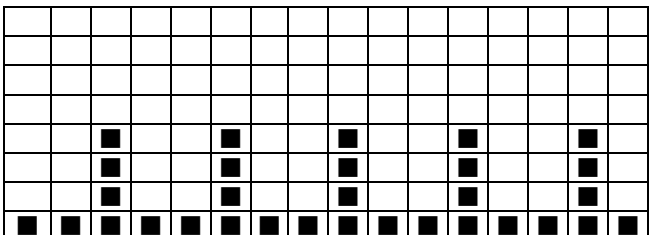
P10



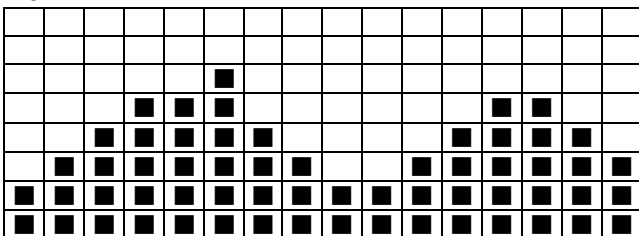
P5



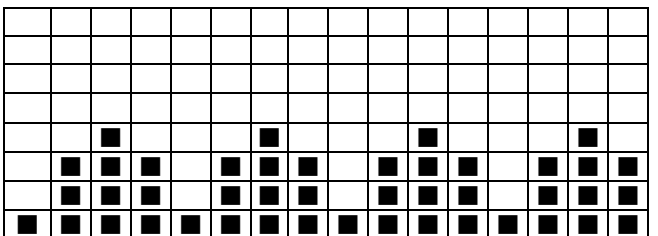
P11



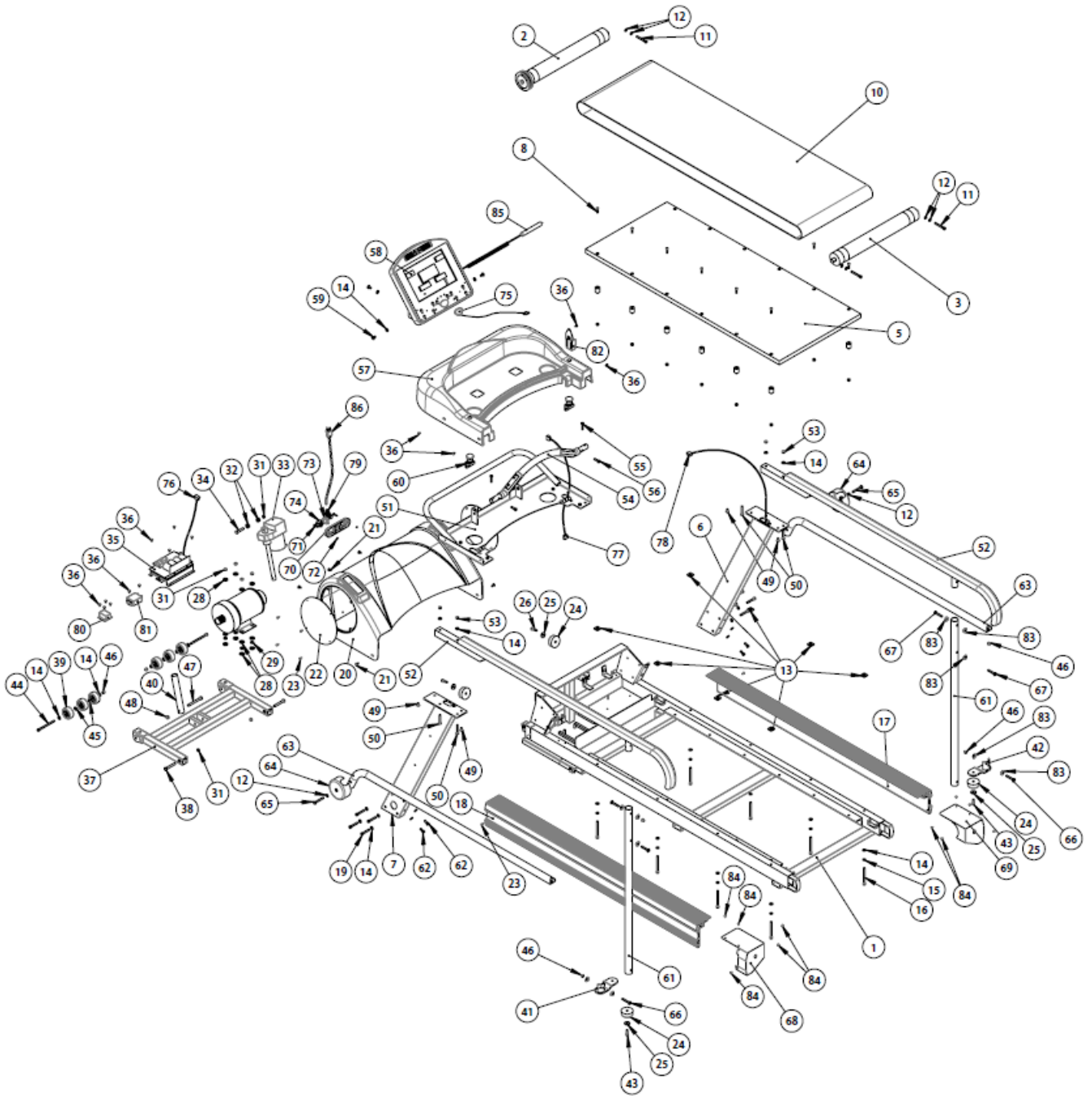
P6



P12



Exploded Diagram



Parts List

NO.	Description	Qty	NO.	Description	Qty
001	Main Frame	1	044	Mushroom Head Hexagonal Bolt M8*115L	2
002	Front Roller	1	045	Washer 8*18*2T	4
003	Rear Roller	1	046	Nylon Nut M8	6
004	Suspension	12	047	Mushroom Head Hexagonal Bolt M8*115L	1
005	Running Deck	1	048	Nylon Nut M10*7L	1
006	Upright Pole(R)	1	049	Hexagonal Bolt M8*16L	4
007	Upright Pole(L)	1	050	Hexagonal Bolt M8*55L	4
008	Cross Screw M8*30L	12	051	Computer Rack	1
009	Nut M8	12	052	Hand Pole - Long type	2
010	Running Belt with logo	1	053	Nylon Nut M8	4
011	Mushroom Head Hexagonal Bolt M8*65L	3	054	Heart Rate Handle Bar	1
012	Washer 8*16*1.2T	8	055	Hexagonal Bolt M8*35L	2
013	25 tapping Iron plates	8	056	Hexagonal Bolt M8*25L	2
014	Washer 8*18*1.5T	32	057	Computer Rack Cover	1
015	Spring Washer M8	8	058	Console	1
016	Mushroom Head Hexagonal Bolt M8*100L	8	059	Mushroom Head Hexagonal Bolt M8*16L	4
017	Side Rail(R)	1	060	Emergency Stop Button	2
018	Side Rail(L)	1	061	Handle Support Tube - Long type	2
019	Mushroom Hexagonal Bolt M8*50L	8	062	Mushroom Head Hexagonal Bolt M8*20L	4
020	Motor Cover	1	063	Lower Hand Pole	2
021	Cross Screw M6*15L	5	064	Side handle Bar Cover	2
022	Acrylic adjust	2	065	Mushroom Head Hexagonal Bolt M8*60L	2
023	Metal screws TP4*16L	10	066	Mushroom Head Hexagonal Bolt M8*55L	2
024	Concave Buffer	4	067	Mushroom Head Hexagonal Bolt M8*50L	4
025	Washer 8*28*2T	4	068	Dipping Iron Cover(L)	2
026	Mushroom Head Hexagonal Bolt M8*30L	2	069	Dipping Iron Cover(R)	2
027	Clips	5	070	Power Set	1
028	Washer 10*25*2T	12	071	Cross Screw M5*25L	2
029	Washer 10*18*2.5T	4	072	Nylon Nut M5	2
030	AC Servo Motor	1	073	15A Circuit Breaker	1
031	Nylon Nut M10*7L	7	074	ON/OFF Light Switch - large	1
032	Motor cushion plug	2	075	Safety Key	1
033	Incline Motor	1	076	Lower Control Wire	1
034	Hexagonal Bolt M10*50L	1	077	Upper Control Wire	1
035	Lower control board	1	078	Middle Control Wire	1
036	Cross Screw M5*10L	14	079	Wire Holder	1
037	Frame Tubing Set	1	080	Inductor	1
038	Hexagonal Bolt M10*67L	2	081	Filter	1
039	PVC Roller	6	082	Fixed Holder	1
040	Incline Motor Tube	1	083	Washer 8*25*1.5T	10
041	Handle Support Base(L)	1	084	Metal screws TP4*12L	12
042	Handle Support Base(R)	1	085	Control Wire	1
043	Mushroom Head Hexagonal Bolt M8*25L	2	086	Plug	1

PhysioGait

Dynamic Unweighting Systems

Pair your PhysioMill with the PhysioGait
Dynamic Unweighting System!



Over Ground or with a Treadmill!

www.PhysioGait.com