

FANCY ✕ TIGER ✕ CRAFTS ✕ CO-OP



# SOLSTICE MITTS

KIMBERLY DETTKE

[WWW.FANCYTIGERCRAFTS.COM](http://WWW.FANCYTIGERCRAFTS.COM)

With the phases of the moon spanning both wrists and stars around the top, these celestial mitts celebrate the longest night of the year with warm and cozy colorwork in a quick to knit project.

#SolsticeMitts

# SOLSTICE MITTS

## SIZES

One Size fits most; pattern is written to fit hand circumferences of 7" - 8.5" comfortably

## MATERIALS

Retrosaria Vovó; 156 yds/50g skein  
MC: Vinho 08; 1 skein  
CC: Fog 25; 1 skein  
or 100 yds of sport weight yarn for MC and 70 yds for CC

## TOOLS

US 2 (2.75mm) 32"/80cm for magic loop or needles for preferred method of working small circumferences  
*Check your gauge and adjust needle size if necessary.*  
2 stitch markers

## GAUGE

28 stitches x 36 rows = 4"

## FINISHED MEASUREMENTS

7" mitten circumference  
8" length from cuff to ribbing



## ABBREVIATIONS

K: Knit  
P: Purl  
K2tog: Knit 2 together  
SSK: slip, slip, knit  
BOR: beginning of round  
M: marker  
PM: place marker  
SM: slip marker  
RM: remove marker  
MC: main color  
CC: contrast color  
MIR: make 1 right increase  
MIL: make 1 left increase

**CUFF**

In CC, long tail cast on 44 stitches.

**Rounds 1-15:** K1, P1 rib. Drop CC.

**MOON PHASES CHART**

**Round 16:** In MC, K to BOR.

**Round 17:** \*K11, M1. Repeat from \* to BOR.  
4 stitches increased, 48 stitches total.

**Rounds 18-25:** Work [Chart A](#).

Cut CC.

**Rounds 26-30:** In MC, K to BOR.

**THUMB GUSSET**

Thumb gusset set up and increase rounds will be different for the left and right mitts to reorient the colorwork charts, but remaining instructions will be the same for each.

**SET UP ROUND**

Left mitt: K to last 4 stitches, PM, K3, PM, K1.

Right mitt: K1, PM, K3, PM, K to BOR.

**INCREASE ROUND**

Left mitt: K to M, SM, M1R, K to M, M1L, SM, K1.

Right mitt: K to M, SM, M1R, K to M, M1L, SM, K to BOR.

**KNIT ROUND**

Both mitts: K to BOR.

**Round 1:** Set up round.

**Round 2:** Increase round.

**Round 3:** Knit round.

Repeat rounds 2-3 until there are 9 stitches between markers.

**Round 4:** Knit round.

**Round 5:** Knit round.

**Round 6:** Increase round.

Repeat rounds 4-6 until there are 15 stitches between markers.

**Rounds 7-11:** Knit round.

**Round 12:** K to M, RM and slide next 15 stitches to waste yarn or stitch holder. Turn work, cast on 3 stitches with backwards loop cast on, turn work again, RM, K to BOR.

*Thumb stitches will now be on hold.  
48 stitches for mitten body.*

**MITTEN BODY**

**Rounds 1-5:** Knit 5 rounds

**Rounds 6-14:** Work [Chart B](#).

**Round 15:** In MC, K to BOR.

Cut MC.

**RIBBING**

**Round 1:** In CC, \*K10, K2tog, repeat from \* to BOR.

**Rounds 2-6:** K1, P1 rib.

Cast off with an elastic bind off.

**THUMB**

Pick up 15 stitches on hold.

With MC, pick up and knit 7 stitches from backwards loop cast on/mitten body: 3 cast on stitches and 2 on either side of cast on.

Position BOR in the middle of these 7 stitches with 3 stitches to left of the marker and four to the right.  
22 stitches.

**Round 1:** K to BOR.

**Round 2:** K2, K2tog, K to last 4 stitches, SSK, K2.  
20 stitches.

**Round 3:** K to BOR.

**Round 4:** K1, K2tog, K to last 3 stitches, SSK, K1.  
18 stitches.

**Round 5:** K to BOR.

Cut MC

**Round 6:** With CC, K to BOR.

**Round 7-11:** K1, P1 rib.

Cast off with an elastic bind off.

Weave in ends and enjoy your new solstice mitts!

# SOLSTICE MITTS CHARTS

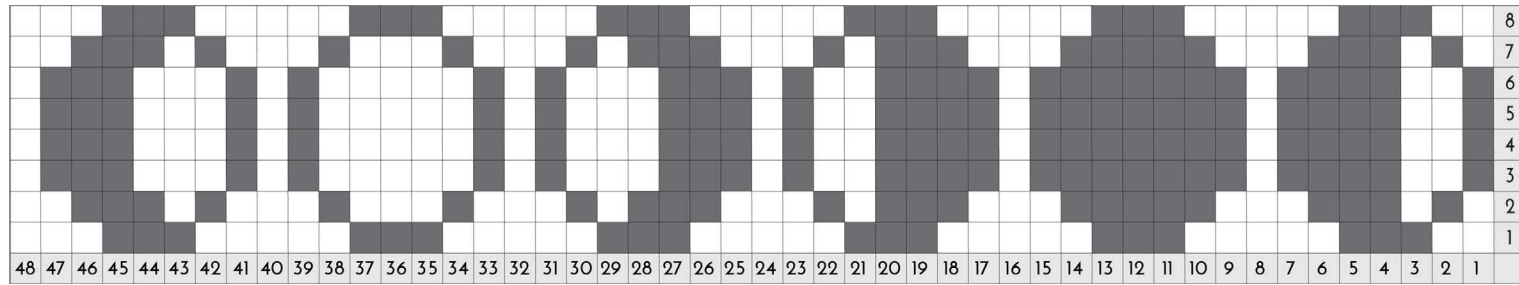
Charts are provided in both a standard and inverted style. Standard charts are written with a darker contrast color than the main color. Inverted charts are written with a lighter contrast color than main color. Please choose the set of charts that corresponds to your individual color choices and that are easiest for you to read.

## CHARTS

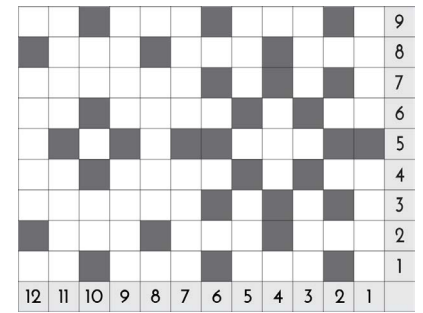
**CHART KEY**

	MC
	CC

### CHART A



### CHART B

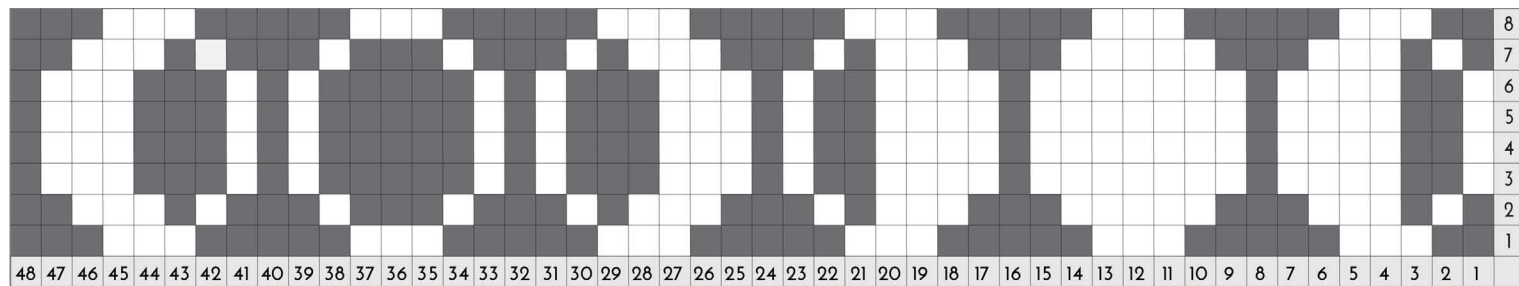


## INVERTED CHARTS

**CHART KEY**

	MC
	CC

### CHART A



### CHART B

