

FANCY ✕ TIGER ✕ CRAFTS

QUINN COZY



WWW.FANCYTIGERCRAFTS.COM

designed by ModularModular

Keep your tablet, laptop or smart device protected in this modern colorblocked sleeve. The Quinn Cozy pattern has instructions for any size device, so you can make one for all your techie wares. An eyecatching leather closure keeps things secure and oh-so-classy.

[#quinncozy](https://twitter.com/quinncozy)

QUINN COZY

designed by ModularModular

FABRIC REQUIREMENTS

Suggested fabric is light to mid-weight cotton. Quilting cotton, linen, light canvas and double gauze work well.

	Tablet	Laptop	Large Laptop (17"+)
Fabric A (top):	$\frac{1}{4}$ yd	$\frac{1}{3}$ yd	$\frac{1}{2}$ yd
Fabric B (bottom):	$\frac{1}{4}$ yd	$\frac{1}{3}$ yd	$\frac{1}{2}$ yd
Lining Fabric:	$\frac{1}{4}$ yd	$\frac{1}{3}$ yd	$\frac{1}{2}$ yd
Optional Seam Accent:	two fabric strips measuring 1" x 16" or 1 yd of 1/2" bias tape, twill tape or ribbon		

ADDITIONAL MATERIALS NEEDED

$\frac{1}{2}$ yard fusible fleece
Fancy Tiger Leather Closure Kit

Coordinating thread, rotary cutter, cutting mat, clear ruler, sewing machine, iron, awl or thread snips, hammer.

FINISHED SIZE

Customized to your device.

CALCULATE YOUR SIZE

Measure your device's length and width, rounding up to the nearest $\frac{1}{4}$ ". Measure the height, rounding up to the nearest $\frac{1}{4}$ " which will be added below to both measurements. Fill in below to calculate your pattern size. Add up each of the two columns below to get your pattern measurements. An example in blue is filled out for a 15" Macbook Pro.

Width _____ 9.25"

Height + _____ .50"

Seams + _____ 1"

Pattern Width (A) = _____ 11.25"

Length _____ 14.25"

Height + _____ .50"

Seams + _____ 1"

Patt. Length (B) = _____ 15.75"

Exterior Angle Seam + _____ $\frac{3}{4}$ "

Ext. length with seam = _____ $15.75" \div 2 =$ Exterior Half (C) _____ 8.25"

Now a little more calculating to figure out the angled top and bottom of the patchworked exterior.

Exterior half (C) _____ $8.25" + 1.5" =$ Tall Side (D) _____ 9.75"

Exterior half (C) _____ $8.25" - 1.5" =$ Short Side (E) _____ 6.75"

CUT YOUR FABRIC

LINING PIECES

Mark and cut two rectangles from your lining fabric that measure:
(A) _____ wide by (B) _____ tall.

FUSIBLE INTERFACING

Cut two rectangles about 1" wider and 1" longer than the cut lining pieces.

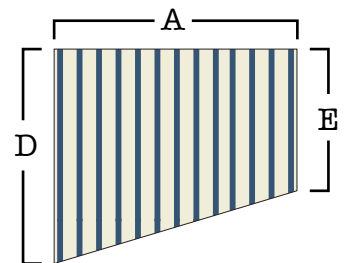
EXTERIOR PIECES

Cut your exterior pieces according to the diagrams at right. Place two layers of your exterior top fabric right sides together, and cut using the measurements you calculated A, D and E. For directional fabrics, notice that the angled side will be towards the bottom of your piece. Repeat using the measurements for your bottom exterior fabric, with the angle towards the top of your piece.

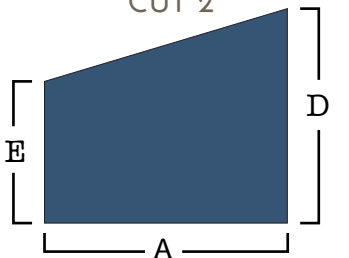
ACCENT PIECE (optional)

Cut two fabric pieces measuring 1" x 16". You could also cut two 16" lengths of 1/2" bias tape, 1/2" twill tape or 1/2" ribbon.

TOP EXTERIOR PIECES
CUT 2



BOTTOM EXTERIOR PIECES
CUT 2



SEWING INSTRUCTIONS

All seams are $\frac{3}{8}$ unless otherwise noted.

Attach Seam Accent

If using fabric here, press it in half lengthwise, so that it is $\frac{1}{2}$ " (folded) by 16".

Place one seam accent piece on the diagonal edge of your top exterior piece, with the right side facing. Raw edges of the seam accent piece should be lined up with the raw edges of the diagonal edge. Baste these two pieces together with a scant $\frac{1}{4}$ " seam. Repeat for the other seam accent and top exterior piece.

Trim seam accent flush with sides of top exterior piece. Make a small mark on the trimmed edge at $\frac{3}{8}$ " from the diagonal raw edge (see diagram at right).

Seam Top and Bottom

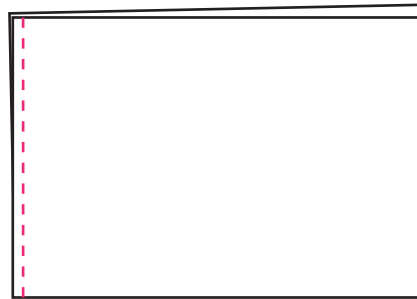
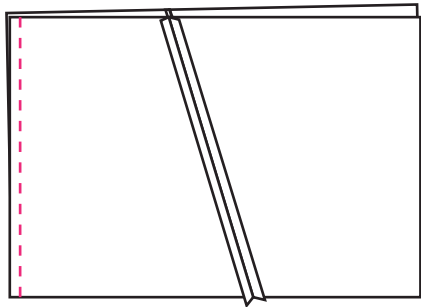
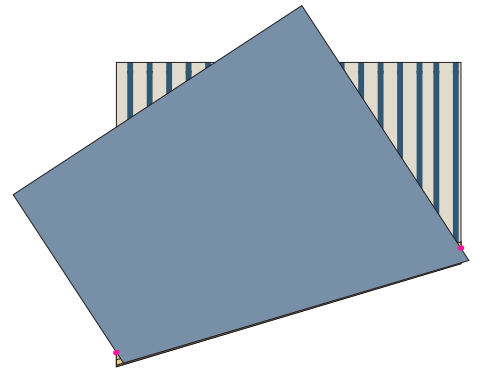
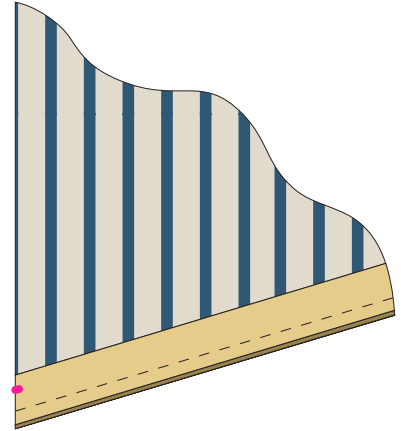
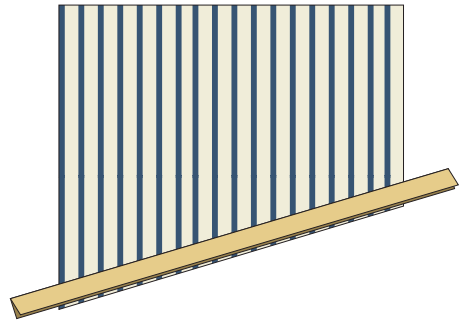
Place this piece right sides together with bottom exterior piece, lining up the diagonal edge and having the sides intersect right at the $\frac{3}{8}$ " mark you made.

Stitch this seam at $\frac{3}{8}$ ", stitching right through the marks where the edges are lined up. Press seam flat, pressing seam allowance open and the seam accent on right side towards bottom exterior. Repeat for other side.

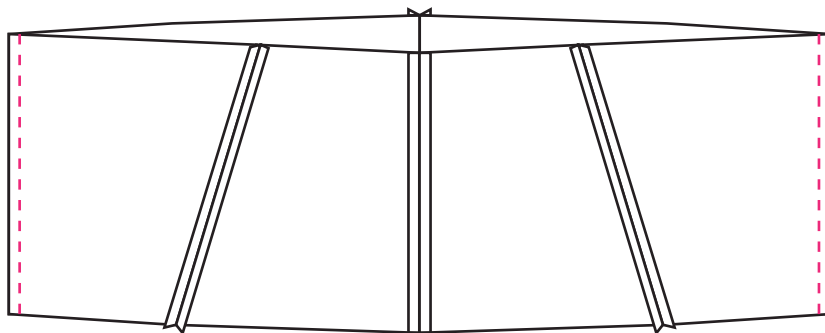
Fuse fleece to the wrong side of each of the two pieced exterior pieces. With your rotary cutter, trim the exterior pieces to match the size of the lining pieces.

Assemble sleeve

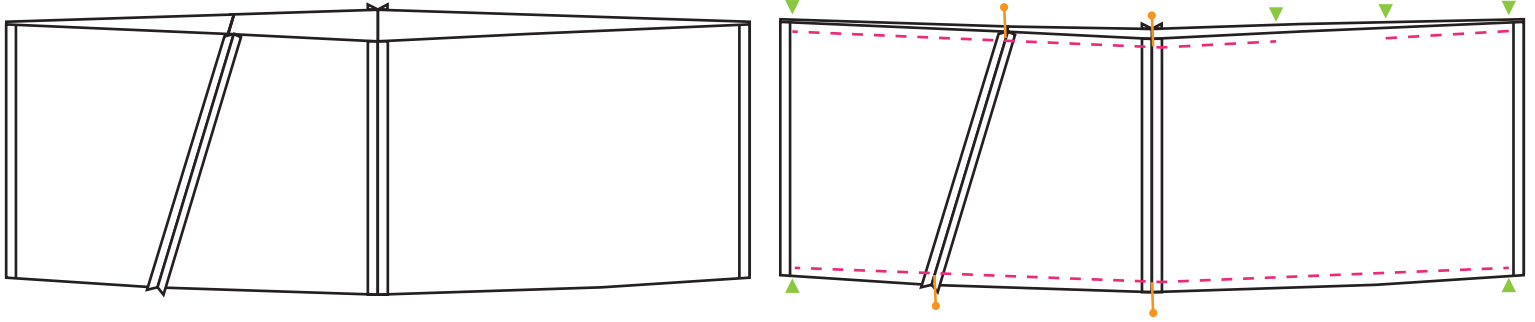
Put two exterior pieces right sides together and stitch across the bottom. Press seam open. Put the two lining pieces right sides together and stitch across the bottom. Press open.



Open both exterior and lining, placing them right sides together, and stitch both short ends of this long rectangle. Press open all seams. You now have a big tube.



Flatten your tube, matching up the exterior fabrics to themselves, right sides together, and the lining fabrics to themselves, right sides together. Pin at each of the seams as precisely as possible. On one edge of the lining, mark about 5" to leave as a gap for turning your cozy.

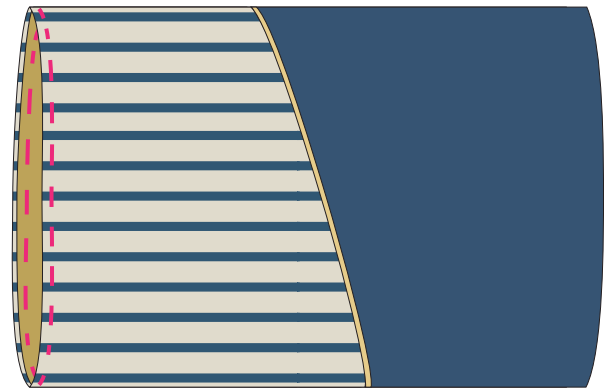


You will now stitch the length of each side, starting and stopping just within the seam allowances at the beginning and end of this long seam--do not sew the seam allowance of the previous seam at either end. Do your best to keep the pinned seams aligned and be sure to leave a gap where marked.

Press these long seams open--a sleeve board will help--particularly where the lining and exterior fabrics meet, which will be the top of your cozy. Clip the four corners as close as possible to the stitching without cutting through the stitching.

Turn cozy right side out through the gap you left in the lining. Stitch the gap in the lining closed by hand-stitching or machine stitching along the edge.

Tuck lining into the cozy. It's looking great now! Press the top opening of your cozy flat along the seam between lining and exterior. Topstitch along this edge at 1/4" around top opening to stabilize.



Attach Bag Closure

Center closure strap (the larger leather piece) on back of your cozy, 1" down from top. Mark rivet hole location. Make a tiny snip, or use an awl to poke a hole in bag just big enough for rivet post.

Slip rivet post up into the hole in your bag. Place closure strap over the posts, fitting it into the hole. Gently snap a cap onto the post.

Using a rubber mallet or hammer, secure the rivet by giving a few good whacks. It is helpful to place the bag at the corner of a sturdy table just above the table leg for support. A scrap of wood or cutting board underneath will protect your surface. Make sure the other side of your cozy is not underneath when you hammer, as this will leave marks in your fabric. The cap and post should feel secure and not "wiggly" once it is fully connected.

Place closure loop centered horizontally on front of bag, about 1" down. Mark both rivet holes and attach as above.

Slip the closure strap into loop and your cozy is complete!

Now you are ready to safely tote your laptop or tablet around town in style!

