



LINDEN HAT

KRISTEN DUSSAULT

WWW.FANCYTIGERCRAFTS.COM

Designed for the 2022 Yarn Along the Rockies Yarn Crawl our Linden Hat is knit in DK weight and comes in three sizes: Child, Adult Small, and Adult Large. The design features simple techniques that combine to make an elegantly textured knit. The Linden Stitch is featured throughout and alternates with slip stitch panels for a meditative, and easy-to-memorize, pattern.

#LindenHat

LINDEN HAT

SIZES

Child (Adult, Adult Large)

MATERIALS

1 skein Birch Hollow Fiber's Phillis DK (250yds/115g)
Or 140 (180, 220) yards of DK weight yarn

TOOLS

US 6 (4mm), 16"/40cm circulars
US 6 (4mm) double pointed needles
US 4 (3.5mm), 16"/40cm circulars
or needles for your preferred method of working hats in the round.
Check your gauge and adjust needle size(s) if necessary

GAUGE

Stockinette in the Round:
20 sts/4 inches on US 6 needles

after blocking

Linden Repeat: 1 pattern repeat on US 6 needles = 17sts is approx 3 1/8" after blocking

FINISHED MEASUREMENTS

Circumference: 15 5/8" (18 3/4", 21 7/8") circumference after blocking. Choose a hat that has roughly 1-2" of negative ease for a snug fit.

Length (brim to crown): 8" (9 1/2", 9 1/2") brim to crown.



ABBREVIATIONS

K: knit

P: purl

St(s): stitch(es)

Sl st: Slip next stitch purlwise with yarn in back

LS: Make Linden Stitch: k3tog, leaving sts on the left needle, YO, then k3tog in the same 3 sts again, slip sts from the left hand needle.

K2tog: knit the next two stitches together.

P2tog: purl the next two stitches together

SSK: Slip next 2 stitches knitwise, knit the two slipped stitches together.

PM: Place Marker

CDD: Center double decrease. Slip next stitch purlwise, K2tog, Slip slipped stitch over K2tog stitch.

BOR: Beginning of Round

Pattern

Cast On

Using smaller needles, cast on 85 (102, 119) sts using a German Twisted Cast On or your preferred stretchy cast on method. Place BOR marker and join in the round. Be careful not to twist sts.

Brim

[P2, K, P2, (K, P) 6 times.] Repeat to BOR.

Continue working pattern until hat measures 1" (2", 2")

Hat

Change to larger needles.

Set up Round: [P2, K, P2, K12.] Repeat to BOR.

Linden Stitch Pattern Repeat

Round 1: [P2, Sl, P2, (LS, K) 3 times.] Repeat to BOR.

Round 2: [P2, K, P2, K12.] Repeat to BOR..

Round 3: [P2, Sl, P2, (K, LS) 3 times.] Repeat to BOR..

Round 4: Repeat round 2

Repeat Rounds 1-4 until your hat measures 5 1/2" (7", 7") or 2 1/2" less than your desired length. Make sure to end with Round 4.

If you would like a slouchy hat, add more length now before doing the crown section.

Crown

Instructions for the crown are written for 1 single repeat.

Each round should be repeated around the hat until you have made it to the BOR marker.

Charted instructions for crown decreases are also provided. Please refer to them if this is your preference.

Round 1: P2, Sl, P2, (LS, K) 3 times, PM.

Round 2: P2, K, P2, SSK, K to 2 before M, K2tog.

Round 3: P2, Sl, P2, (K, LS) 2 times, K2.

Round 4: P2, K, P2, K to M.

Round 5: P2, Sl, P2, K2, (LS, K) 2 times.

Round 6: P2, K, P2, SSK, K to 2 before M, K2tog.

Round 7: P2, Sl, P2, (LS, K) 2 times.

Round 8: P2, K, P2, K to M.

Round 9: P2tog, Sl, P2tog, (K, LS) 2 times.

Round 10: P, K, P, K to M.

Round 11: P, Sl, P, (LS, K) 2 times.

Round 12: P, K, P, SSK, K to 2 stitches before M, K2tog.

Round 13: P, Sl, P, K, LS, K2.

Round 14: P, K, P, SSK, K to 2 stitches before M, K2tog.

Round 15: P, Sl, P, K, LS.

Round 16: P, K, P, SSK, K2tog.

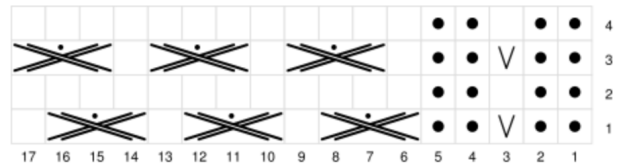
Round 17: P, K, P, SSK.

Round 18: CDD, K.

Break yarn and draw through remaining stitches. Weave in ends.

Charts

Body Chart



Crown Chart

