

FANCY ✕✕ TIGER ✕✕ CRAFTS

# WILD GOOSE CHASE

KEELY SHAW and AMBER CORCORAN



WWW.FANCYTIGERCRAFTS.COM

Designed for Row by Row Experience 2017

This modern take on flying geese “on the go” is a fun, foundation paper-pieced project that comes together quickly, even though it looks complicated. If you’re new to paper piecing or need a refresher, we’ve put together a technique video at: ([www.fancytigerquilts.com/geese\\_tutorial](http://www.fancytigerquilts.com/geese_tutorial)).

Our row looks best when you improvise with fabric choices. We used 4 background (sky) fabrics in deep blues, along with a light sparkling woven for the geese.

#wildgoosechase

# WILD GOOSE CHASE

## MATERIALS

4 fat quarters of prints/solids for the sky (you can use any number of fabrics as you'd like)

A fat eighth or scraps of fabric for the geese.

## TOOLS

Fabric glue stick

Coordinating thread in a neutral color

Foundation paper piecing paper or newsprint (if you purchased the kit, your pieces are already printed on this paper for you)

A sewing ruler with 1/4" markings

Rotary cutter & mat

Scissors



## When You're Paper Piecing:

1. Fabric is sewn to the NON-PRINTED side of the paper. The PRINTED side of paper will face up as you are sewing.
2. When sewing, use a 1.5 stitch length and a larger needle than you'd normally use to piece a quilt. This will create more perforations and make it easier to remove the paper later.
3. Use an open-toe or clear foot so you can easily see the lines as you sew and make precise stitching on your lines.

## Before you begin:

Cut each paper pattern block piece out around the outer-most line. This is a built-in 1/4" seam allowance that you will use when attaching each block together to make the completed row.

## Pattern Notes:

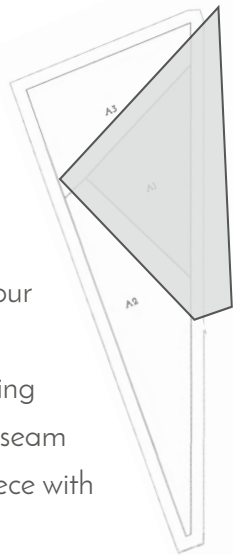
1. Photocopy pattern pages onto foundation piecing paper (if you have the kit, this is already done for you). Foundation paper tears easily and will make removing the papers at the end much easier. Regular paper can be used, but use extreme care when removing papers, or you may tear your stitches out.
2. Each of your blocks has sections with a letter and a number. The letter indicates which pattern block you're working with, and the number indicates what order you should attach each piece of fabric to your pattern piece.
3. Each block starts with the goose as number 1. For efficiency, cut and baste all the geese pieces in one go!
4. Keep in mind as you sew, the paper side of your project will be the mirror image of the finished row.

# WILD GOOSE CHASE

Start by assembling Block A as follows.

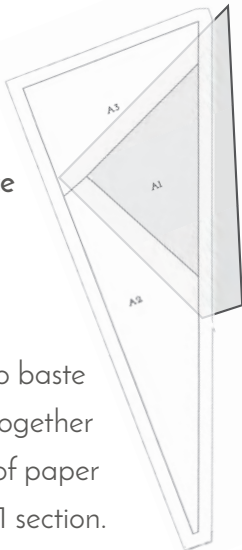
## ROUGH CUT YOUR "A1" GOOSE:

With printed side of pattern paper facing up, place your goose fabric right side **DOWN**, covering section A1 and overlapping the edge by at least 1/4" for your seam allowance. Cut out your goose piece with 1/4" seam allowance.



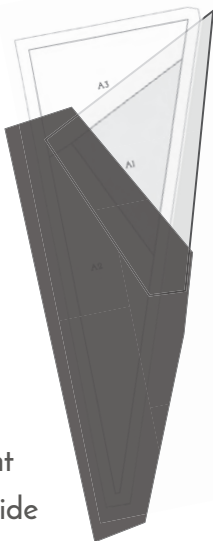
**Note:** This doesn't have to be a perfect seam allowance, as you can trim after you sew. Erring with a little extra seam allowance will make it easier to have a successful block.

Use a small dab of fabric glue to baste the A1 goose fabric wrong side together with the **NON-PRINTED** side of paper pattern, centering it under the A1 section.



## ROUGH CUT YOUR "A2" SKY:

With printed side of paper facing up, place your sky fabric right side **DOWN** covering section A2 and overlapping the edges by at least 1/4". Cut out your sky piece with at least 1/4" seam allowance.



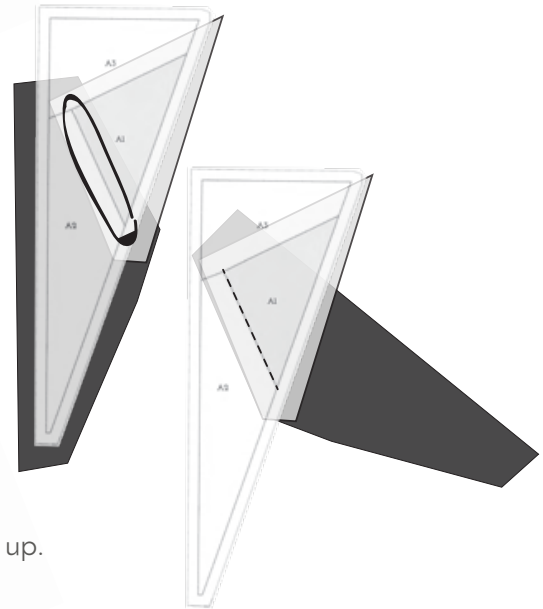
**Note:** Make sure as you cut your sky pieces, you are placing the right side of fabric towards the printed side of the paper.

## PAPER PIECEING:

**Important Note:** You will be attaching fabric to the non-printed side of your pattern piece.

Place the A2 sky fabric under the paper so it is centered below the printed A2 paper section, wrong side facing the non-printed side of paper.

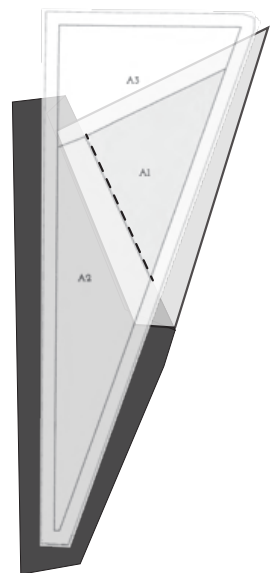
Carefully flip A2 along the seam line toward section A1. A1 and A2 should now be right sides together. Hold it in place, clip or pin the layers and sew along the A1/A2 seam line with paper facing up.



Carefully trim your seam allowance to a 1/4".

Fold A2 back toward the A2 paper section and press flat.

Repeat in this manner until all sections are attached for each block, going in numerical order starting with the goose or 1. The exception is block "m" which does not have a goose, and you will use only sky fabrics for this block.



Note on mistakes:

If you happen to make a mistake and the fabric doesn't cover your section when you fold it at the seam, you can use a strip of Scotch tape on the paper before you use the seam ripper on the fabric side. That will help your paper stay together when you sew it again.

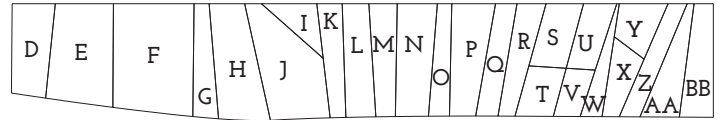
Note on shifting fabric:

If the section you just sewed was large or if the seam line is small compared to the piece of fabric (if it wants to move around on you at all), you can put a dab of fabric glue on the paper to hold it in place as you add the other sections.

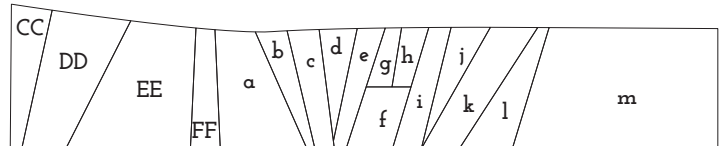
Note for maximum efficiency:

Assembly line sewing keeps you from having to be up and down to the cutting mat and ironing board. Sew 5 or 6 paper pattern pieces at the same time. Start with cutting and sewing section 2 to each one, then trim them all, press them all, bring them back to the machine to add section 3 to all of them in turn.

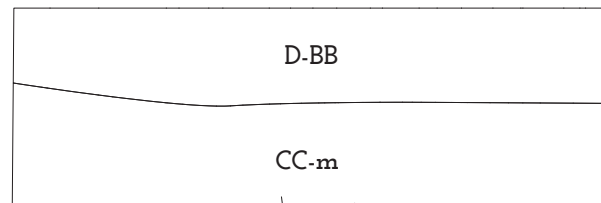
2. Attach the topmost geese blocks together in a long line, creating a unit like this:



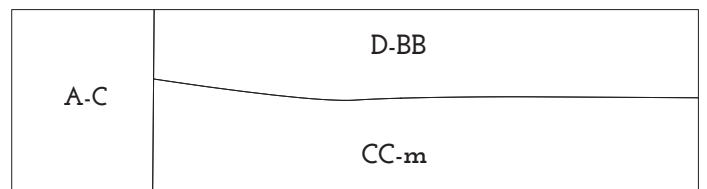
3. Attach the bottommost geese blocks together in a long line, creating a unit like this:



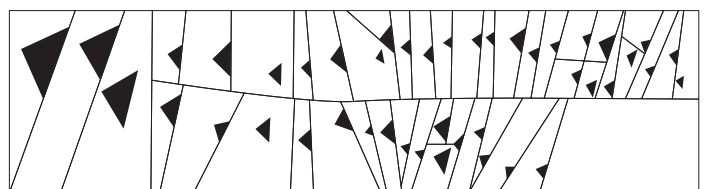
4. Attach the top and bottom geese units together, creating a unit like this.



5. Attach the A-C unit to your smaller geese unit. Your finished row will look like this:



6. Remove the papers and press. You're done!



**FINAL ASSEMBLY OF BLOCKS:**

When all of your blocks are finished, you're ready to assemble them together.

Since our row is made up of a series of flying geese units, you'll attach the pieces together in a specific order to make sure it comes together as it should. Attach the pieces together as follows, pressing the seams to one side as you go:

1. Attach blocks as shown: ABC, IJ, ST, UV, YX, ghf

