

# TECHNICAL INFORMATION

A	✓	BG	✓	CY	✓	E	✓	FL	✓	I	✓	LT	✓	MD	✓	NL	✓	S	✓	TR	✓	Date	
AL	✓	BIH	✓	CZ	✓	EST	✓	GB	✓	IRL	✓	LV	✓	MK	✓	P	✓	SK	✓	UA	✓	15/01/2013	
AND	✓	BY	✓	D	✓	F	✓	GR	✓	IS	✓	M	✓	MNE	✓	PL	✓	SLO	✓	Country Reported			
B	✓	CH	✓	DK	✓	FIN	✓	H	✓	L	✓	MC	✓	N	✓	RO	✓	SRB	✓	UK			

**Product Category:** Plasma TV / Plasma IDTV

**Subject:** PSS Board operation stability problem

**Model(s) Affected:** TX-P42/50X50B TX-P42/50XT50E TX-PR42/50XT50  
TX-P42/50X50E TX-P42/50XT50Y  
TX-P42/50XT50B TX-PR42/50X50

**Symptom / Cause:** Following a certain sequence of events, the television does not power on and there is no standby LED lit. For example after disconnecting from the mains supply, then re-connecting within 3 minutes.

**Remedy /** This modification applied to all units with a serial number prior to:

Method:	Screen Size	PSS PCB Part No	Serial Number
	42"	N0AE6JK00005	** -2550001
	50"	N0AE6JK00006	** -2560001

Replace IC U203 on the foil side of the PSS-PCB. (See Fig. 1 and Fig. 2 for U203 location details.)  
Order kit part number: TZS9EK097

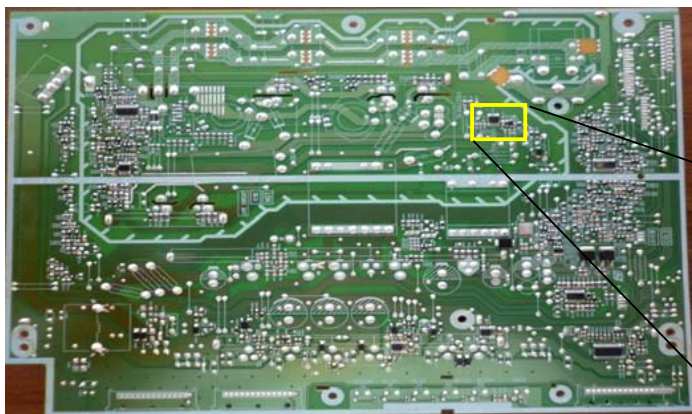


Fig. 1: General location

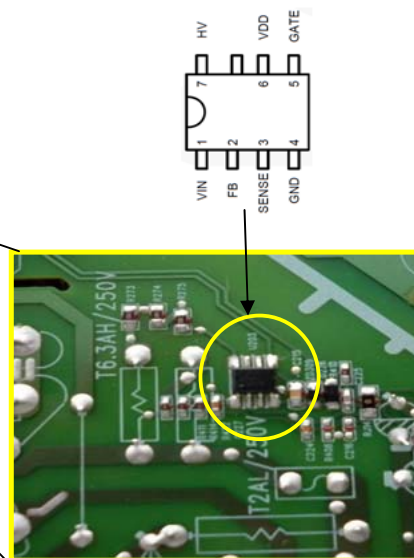


Fig. 2: Detail location

**TZS9EK097**

[sparedparts.com/products/u203](http://sparedparts.com/products/u203)

## ATTENTION

After replacement of the power management IC the TV may not start up on the first attempt. This is due to the protection circuit contained on the main board. To remove the protection error code from the main board, switch off the TV by isolating it from the mains and wait for a few minutes. You may have to repeat this process a few times before the error code(s) are removed.