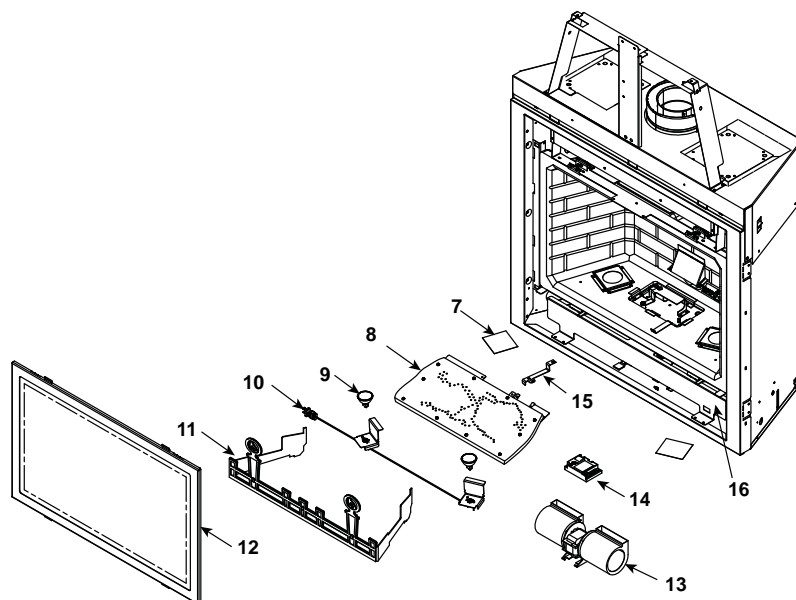
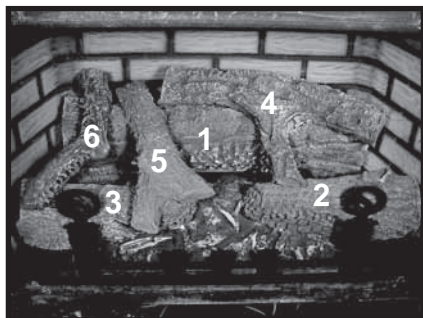


### Log Set Assembly



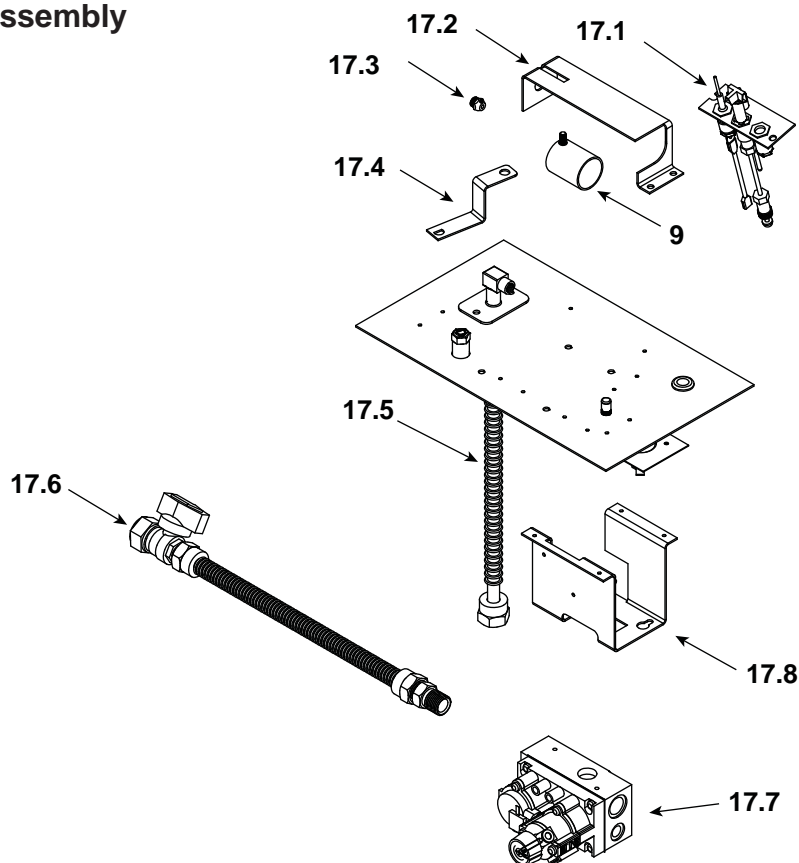
IMPORTANT: THIS IS DATED INFORMATION. Parts must be ordered from a dealer or distributor. **Hearth and Home Technologies does not sell directly to consumers.** Provide model number and serial number when requesting service parts from your dealer or distributor.



**Stocked  
at Depot**

ITEM	DESCRIPTION	COMMENTS	PART NUMBER	
	Log Set Assembly		LOGS-2062	Y
1	Log 1		SRV2062-701	
2	Log 2		SRV2062-702	
3	Log 3		SRV2062-703	
4	Log 4		SRV330-706	
5	Log 5		SRV330-704	
6	Log 6		SRV340-705	
7	Kapton Lens	Pre 002618815	2062-149	Y
		Post 002618815	2101-252	Y
8	Burner NG	Pre Feb 2006	SRV2062-004-NG	Y
	If ordering SRV must also order Log SRV2062-701	Post Feb 2006	2062-004	Y
	Burner LP	Pre Feb 2006	SRV2062-004-LP	Y
	If ordering SRV must also order Log SRV2062-701	Post Feb 2006	2062-004	Y
9	Light Bulb, Qty 2 req	Pre Sept 2007	700-540	Y
	Ember Bulb 20W, Qty 2 req	Post Sept 2007	2088-136	Y
10	Light Assembly	Pre Sept 2007	2062-073	
		Post Sept 2007	4061-035	
11	Grate Assembly		2062-080	
12	Glass Door Assembly		GLA-2062	Y
13	Blower		GFK-160A	
14	Control Module		593-592	Y
15	Shutter Arm Bottom		2062-133	
16	Access Plate		2062-156	

## #17 Valve Assembly



IMPORTANT: THIS IS DATED INFORMATION. Parts must be ordered from a dealer or distributor. **Hearth and Home Technologies does not sell directly to consumers.** Provide model number and serial number when requesting service parts from your dealer or distributor.



**Stocked  
at Depot**

ITEM	DESCRIPTION	COMMENTS	PART NUMBER	
17.1	Pilot Assembly NG	Pre Feb 2006	4021-422	Y
		Post Feb 2006	2090-012	Y
	Pilot Assembly LP	Pre Feb 2006	4021-423	Y
		Post Feb 2006	2090-013	Y
17.2	Burner Support		2062-130	
17.3	Orifice NG (#32C)		582-832	Y
	Orifice LP (#50C)		582-850	Y
17.4	Shutter Arm		2062-132	
17.5	Flexible Gas Connector		383-302A	Y
17.6	Flex Ball Valve Assembly		302-320A	Y
17.7	Valve NG		750-500	Y
	Valve LP		750-501	Y
17.8	Valve Bracket		2062-152	
17.9	Shutter Bracket Assembly		319-316A	Y
	Wire Harness 20"		107-559A	Y
	Temp Sensor		107-531	Y

Additional service part numbers appear on following page.

**Beginning Manufacturing Date: April 2004**  
**Ending Manufacturing Date: Oct 2012**

**IMPORTANT: THIS IS DATED INFORMATION.** Parts must be ordered from a dealer or distributor. **Hearth and Home Technologies does not sell directly to consumers.** Provide model number and serial number when requesting service parts from your dealer or distributor.



## Stocked at Depot

ITEM	DESCRIPTION	COMMENTS	PART NUMBER	
	Battery Pack		593-594A	Y
	Decorative Front		DF-36AFB-HH-BK	
	Fiberglass Rope		060-455	
	Glass Latch Assembly	Pkg of 2	386-122A/2	Y
	Junction Box		4021-013	Y
	Multi Function Wall Switch Kit		QWSK-MLT	
	Solenoid		HTI-17-006	Y
	Wall Switch/ Key pad		HTI-12-007	Y
	Control Wire		HTI-23-007	Y
	Cover Plate		HTI-21-007	Y
	Control box		HTI-13-007	Y
	Actuator Pins		HTI-17-116	Y
	Switch Kit		HTI-25-007	Y
	Non-combustible Board		2062-085	
	On/Off Rocker Switch		060-521A	Y
	Patch Kit		SRV-PACK	
	Surround		2026-108	
	Vermiculite Embers		MYSTIC-EMBERS	
	Wire Assembly		593-590A	Y
	Conversion Kit NG		NGK-2062	Y
	Conversion Kit LP		LPK-2062	Y
	Pilot Orifice NG	Pre Feb 2006	446-505	Y
		Post Feb 2006	593-528	Y
	Pilot Orifice LP	Pre Feb 2006	446-517	Y
		Post Feb 2006	593-527	Y
	Regulator NG		NGK-DXV	Y
	Regulator LP		LPK-DXV	Y