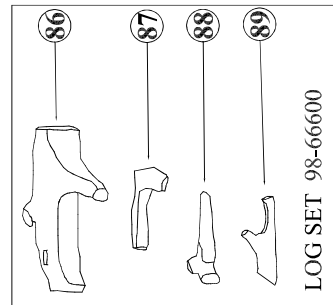
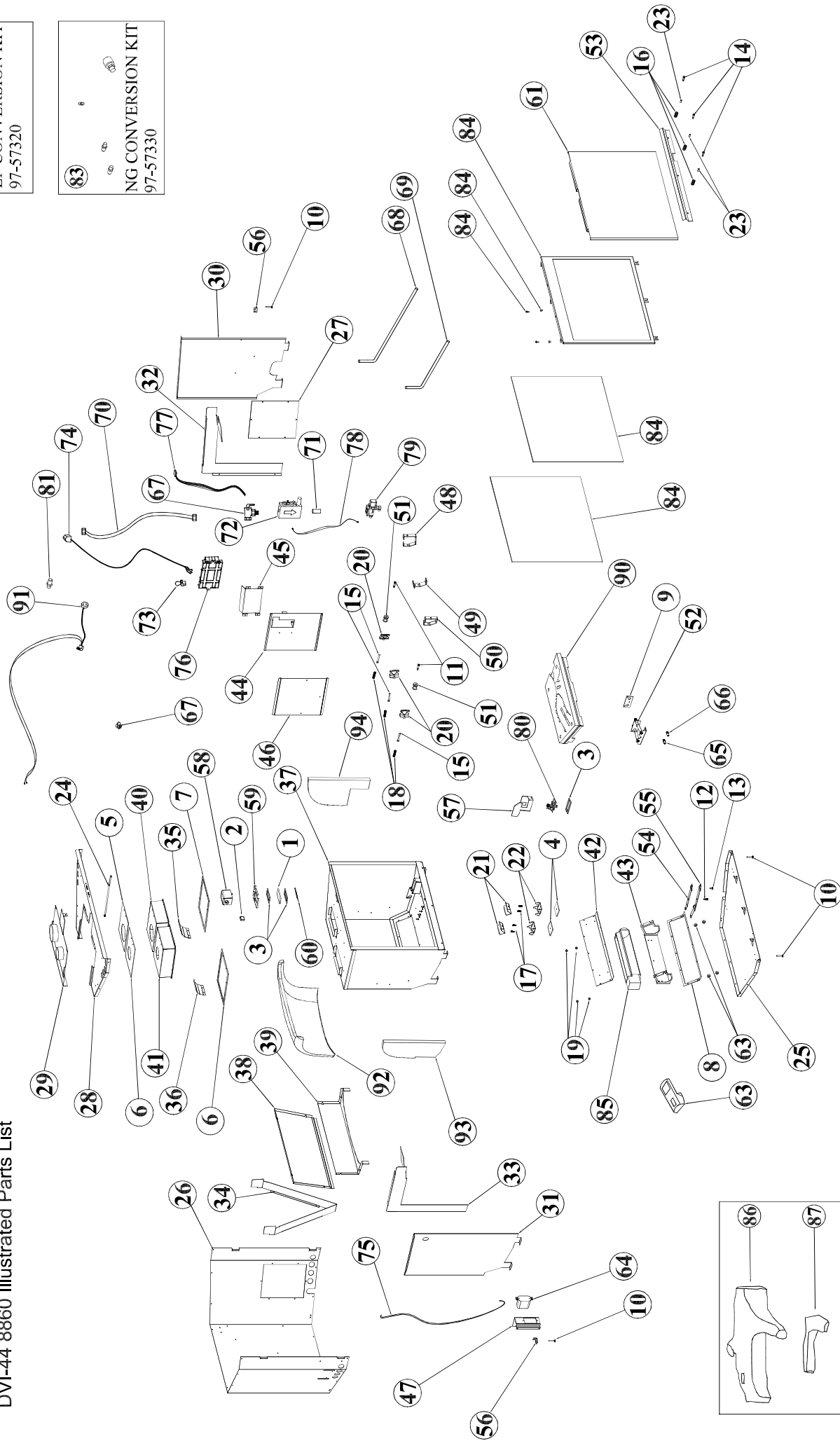


**82** LP CONVERSION KIT  
97-57320

**83** NG CONVERSION KIT  
97-57330



LOG SET 98-66600

<b>8860 DX Exploded View Key</b>			
<b>Key</b>	<b>Part Number</b>	<b>Object Description</b>	<b>Qty</b>
1	3030-435	Glass: Ambient Light	1
2	3120-160	1"x1"x 1/4" Ambient Light Plug	1
3	3160-152	Gasket: Pilot and Ambient Light	3
4	3160-227	Gasket: Air Shutter	2
5	3160-860	Gasket: Exhaust Manifold	1
6	3160-861	Gasket: Inlet Manifold	1
7	3160-862	Gasket: Inlet & Exhaust	2
8	3160-863	Gasket: Blower Hatch	1
9	3160-872	Gasket: Orifice Manifold	1
10	4100-0117	Leveling Bolt: 1/4-20 x 1-1/2"	4
11	4100-0295	Screw: Shoulder 5/16 x 1" socket	2
12	4100-0300	Screw: Shoulder 5/16 x 3/8" socket	1
13	4500-0570	Screw: 1/4-20 x 1/2"	1
14	4500-1040	Screw: 1/4-20 x 1" Button	3
15	4500-1400	Screw: 1/4-20 x 2-1/4" Hex	3
16	5000-108	Spring: .48" OD x .5" Long	3
17	5240-139	Spring: Air Shutter	4
18	5240-150	Spring: Top Glass Frame	3
19	5491-090	Bushing: Blower	4
20	5710-279	Handle: Glass Spring Clip	3
21	5710-313	Air Shutter	2
22	5710-314	Slider: Air Shutter	2
23	5710-405	Sleeve: Glass Mounting	3
24	5850-086	Tool: Flue (For Installation)	1
25	5860-000	Exterior Base	1
26	5860-005	Exterior Sides	1
27	5860-007	Access Panel	1
28	5860-010	Exterior Top	1
29	5860-015	Flue Collar	1
30	5860-025	Heat Shield, Right Side	1
31	5860-030	Heat Shield, Left Side	1
32	5860-035	Air Channel, Right Side	1
33	5860-040	Air Channel, Left Side	1
34	5860-045	Air Channel, Rear	1
35	5860-050	Air Channel, Right Corner	1
36	5860-055	Air Channel, Left Corner	1
37	5860-071	Firebox	1
38	5860-075	Firebox, Rear Interior, Upper	1
39	5860-076	Firebox, Rear Interior, Lower	1
40	5860-080	Manifold: Exhaust	1
41	5860-085	Manifold: Inlet	1
42	5860-090	Blower Hatch	1
43	5860-095	Blower Bracket	1
44	5860-101	Valve Tray	1

45	5860-103	Control Board Shield	1
46	5860-106	Valve Tray Track	1
47	5860-111	Manual Controls Bracket	1
48	5860-115	Right Glass Mounting Bracket	1
49	5860-120	Middle Glass Mounting Bracket	1
50	5860-125	Left Glass Mounting Bracket	1
51	5860-130	Façade Roller	2
52	5860-135	Orifice Manifold	1
53	5860-145	Glass Frame Clip	1
54	5860-150	Air Shutter Lever, Primary	1
55	5860-155	Air Shutter Lever, Secondary	1
56	5860-170	Leg Leveling Base	2
57	5860-176	Pilot Shield	1
58	5860-177	Ambient Light Shield Box	1
59	5860-178	Ambient Light Shield Plate	1
60	5860-179	Deflector: Ambient Light Shield	1
61	5860-180	Front Glass Screen	1
62	7000-130	Grommet: Blower	4
63	7000-393	Remote Control Transmitter	1
64	7000-397	Battery Holder- On/Off/Remote Switch	1
65	7200-438	#38 Rear Orifice	1
66	7200-467	#46 Front Orifice	1
67	7211-004	Shut-off Valve	1
68	7211-017	Flex Tube 3/8 x18"	1
69	7211-018	Flex Tube 3/8" x 12"	1
70	7211-029	Flex Tube 3/8" x 36"	1
71	7211-033	Nipple: 3/8" x 2"	1
72	7211-111	Gas Control Valve	1
73	7211-115	Shunt IPI/CPI: Wire Loop	1
74	7211-116	Wire Harness: Power Supply	1
75	7211-117	Wire Harness Battery Holder- On/Off/Remote Switch	1
76	7211-120	Control Board	1
77	7211-126	IFC Wire Harness to Valve (X5)	1
78	7211-127	IFC Wire Harness to Splitflow Valve (X7)	1
79	7211-355	Solenoid: Split Flow	1
80	7211-395	NG Pilot Assembly	1
81	7300-050	50 watt Halogen Bulb	1
82	<b>97-57320</b>	<b>LP Conversion Kit</b>	
	7211-344	LP Stepper motor	1
	7200-453	#53 Rear Orifice	1
	7200-455	#55 Front Orifice	1
	7211-136	.35mm Pilot Orifice	1
83	<b>97-57330</b>	<b>NG Conversion Kit</b>	
	7211-345	NG Stepper Motor	1
	7200-438	#38 Rear Orifice	1

	7200-467	#46 Front Orifice	1
	7211-163	.62mm Pilot Orifice	1
84	<b>97-58600</b>	<b>Front Glass Kit</b>	
	3030-433	Front Glass	1
	3160-060	Tadpole Gasket	8'
	4400-0100	Rivet	2
	5710-365	Front Glass Clip	2
	5860-140	Front Glass Frame	1
85	<b>97-58510</b>	<b>Blower Kit</b>	
	7211-980	Blower	1
	<b>98-66600</b>	<b>Log Set</b>	
86	7211-630	Rear Log	1
87	7211-631	Front Right	1
88	7211-632	Front Left	1
89	7211-633	Top Left	1
90	<b>98-74600</b>	<b>Burner Pan Assembly</b>	<b>1</b>
91	<b>98-76606</b>	<b>Light Socket Assembly/Blower Power Supply Cord</b>	<b>1</b>
	<b>98-76600</b>	<b>Baffle Set</b>	
92	3120-810	Rear Panel	1
93	3120-811	Left Panel	1
94	3120-812	Right Panel	1