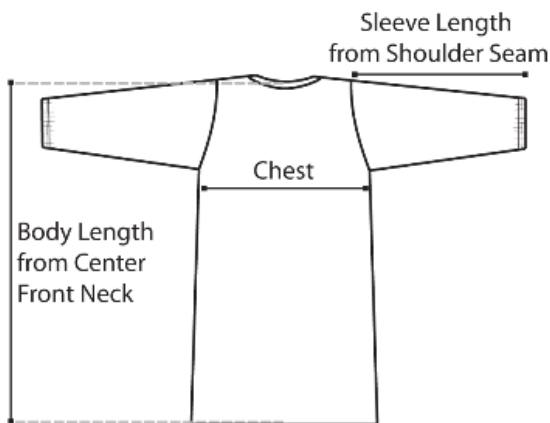


DUPONT™ TYCHEM® 2000

QC278B YL

GARMENT TECHNICAL DATA SHEET



This picture is for measurement reference only.

PRODUCT INFORMATION

ATTRIBUTES

DuPont™ Tychem® 2000 Sleeved Apron. Elastic Wrists. 52" Long. Bound yoke neck w/out Snaps & Waist Ties. Bound Seams. Yellow.

QC278BYLxx0012yy (xx=size;yy=option code)

CATALOG NUMBER



When ordering, replace xx with desired size.

FULL PART NUMBER	FABRIC/MATERIALS	DESIGN	SEAM	COLOR	QUANTITY/BOX	SIZES	OPTION CODES
QC278BYLxx0012yy (xx=size;yy=option code) ?	Tychem® 2000	Apron w/ Long Sleeves, Extra Long	Bound	Yellow	12 per case	00	00

TYPICAL FINISHED DIMENSIONS

SIZE	SLEEVE LENGTH	CHEST WIDTH	BODY LENGTH
UNI	21 1/2	28 1/2	49 3/4

PHYSICAL PROPERTIES - FABRIC DATA

Typical values, not specifications.

PROPERTY	TEST METHOD	TYPICAL RESULT
Thickness	ASTM D1777	10 mils
Basis Weight	ASTM D3776	2.5 oz/yd ²
Burst Strength - Mullen	ASTM D3786	68 psi
Tear Resistance - Trap Tear (MD)	ASTM D5587	6.4 lb _f
Tear Resistance - Trap Tear (CD)	ASTM D5587	5 lb _f
Breaking Strength - Grab (MD)	ASTM D5034	39 lb _f
Breaking Strength - Grab (CD)	ASTM D5034	43 lb _f
Wearing Apparel Flammability	16 CFR 1610 ?	Class 1

Seams and closures have less barrier than fabric. Note: for protection from hazardous or infectious liquids, additional barrier tests are required to establish suitability for use. CAUTION: This information is based upon technical data that DuPont believes to be reliable. It is subject to revision as additional knowledge and experience are gained. DuPont makes no guarantee of results and assumes no obligation or liability in connection with this information. It is the user's responsibility to determine the level of toxicity and the proper personal protective equipment needed. The information set forth herein reflects laboratory performance of fabrics, not complete garments, under controlled conditions. It is intended for information use by persons having technical skill for evaluation under the specific end-use conditions, at their own discretion and risk. Anyone intending to use this information should first verify that the garment selected is suitable for the intended use. In many cases, seams and closures may provide less barrier than the fabric. If the fabric becomes torn, abraded, or punctured, end-user should discontinue use of garment to avoid compromising the barrier protection. **SINCE CONDITIONS OF USE ARE OUTSIDE OUR CONTROL, WE MAKE NO WARRANTIES, EXPRESSED OR IMPLIED, INCLUDING WITHOUT LIMITATION NO WARRANTIES OF MERCHANTABILITY OR FITNESS FOR A PARTICULAR USE AND ASSUME NO LIABILITY IN CONNECTION WITH ANY OF THIS INFORMATION.** This information is not intended as a license to operate under or a recommendation to infringe any patent, trademark or technical information of DuPont or others covering any material or its use. Data presented does not comprise a product specification.

Warning: Cleanroom apparel should not be used around heat, flames, sparks or in potentially flammable or explosive environments. Cleanroom fabrics should have slip-resistant materials on the outer sole of boots, shoe covers, or other garment surfaces in conditions where slipping could occur.

Silicone Statement: In the past, DuPont has found that threads and zippers can be the most significant source of silicone oil contamination in garments. DuPont specifies that thread and zippers used in DuPont™ Tyvek® IsoClean® and ProClean® garments be manufactured without the use of silicone oils. For end users with concerns about contamination with silicone oils or any other contaminants, the best practice is to audit inbound materials, including garments, for those contaminants.

Latex Statement: As of January 1, 2006, DuPont production specifications exclude use of components containing natural rubber latex in the manufacture of DuPont™ Tyvek® IsoClean® and ProClean® garments. Anyone who begins to exhibit allergic response during the use of DuPont products should immediately cease using these products. The incident should also be reported to DuPont at 1.800.441.3637.

Measurements are approximate values intended to assist in proper size selection. Normal variability may result in slight differences in actual garment sizes.

Copyright © 2019 DuPont de Nemours Inc. All rights reserved. The DuPont Oval Logo, DuPont™, and all products denoted with ® or ™ are trademarks or registered trademarks of DuPont or its affiliates. Printed on: