

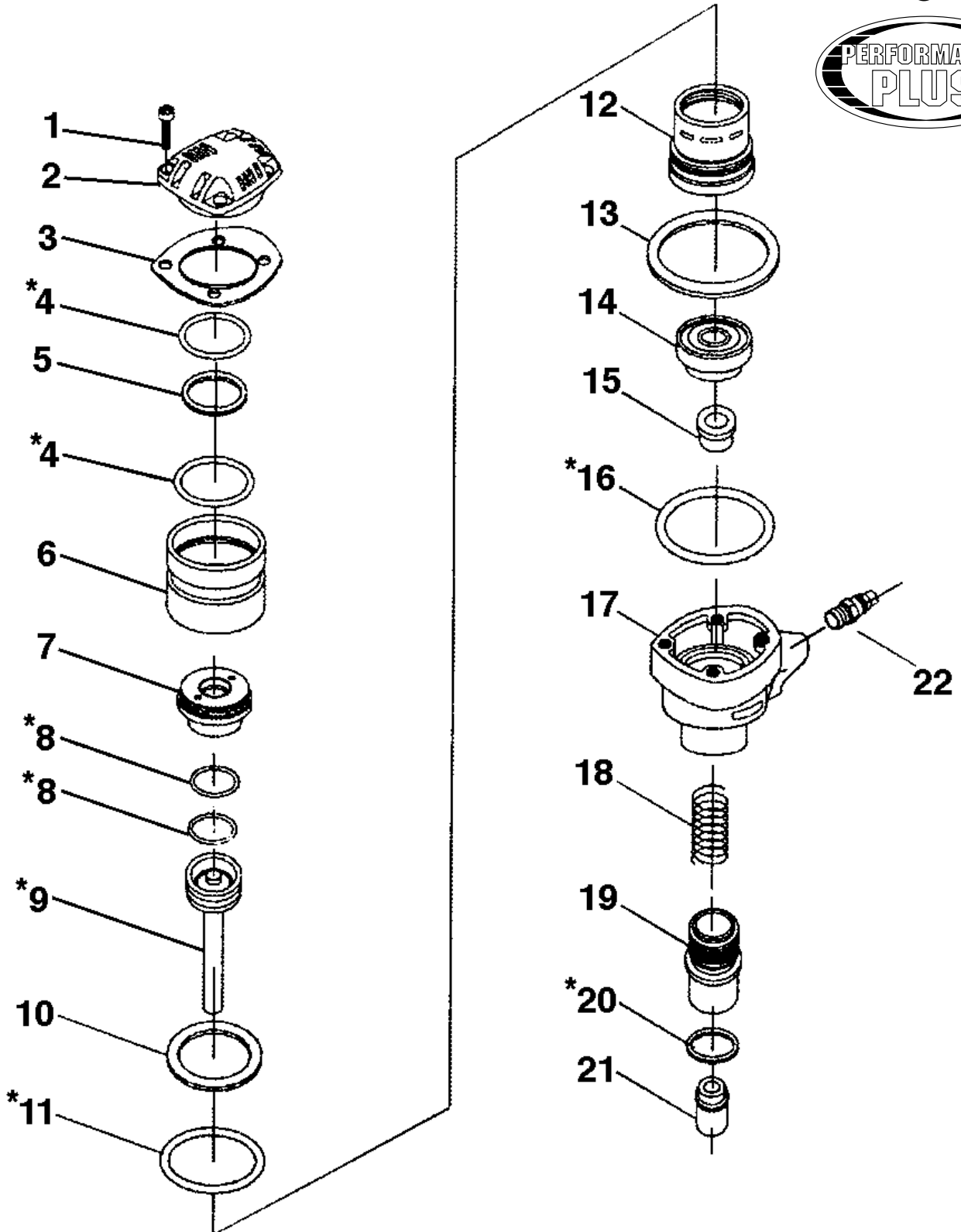


Palm Nailer Marteau Cloueur



8120P

Revised/Revisé 03/15/2018





Parts Pricing List / Liste de Prix des Pièces

8120P

Diag.	Order # Com.	English Description	Description Française	Qty./Qté.	Price/Prix
1	70-81200010	CAP SCREW	BOULON A TETE CYLINDRIQUE	4	\$3.61
2	70-81200020	EXHAUST COVER	COUVERCLE D'ECHAPPEMENT	1	\$20.86
3	70-81200030	GASKET	JOINT D'ETANCHEITE	1	\$7.97
4	KW-105	DRIVER & O-RING REPL. KIT	TROUSSE/REPL. TIGE/JOINTS TOR.	2	-
5	70-81200050	WASHER	RONDELLE	1	\$4.75
6	70-81200060	SLIDE COVER	COUVERCLE COULISSANT	1	\$11.19
7	70-81200070	CYLINDER SLEEVE	MANCHON DU CYLINDRE	1	\$9.58
8	KW-105	DRIVER & O-RING REPL. KIT	TROUSSE/REPL. TIGE/JOINTS TOR.	2	-
9	KW-105	DRIVER & O-RING REPL. KIT	TROUSSE/REPL. TIGE/JOINTS TOR.	1	-
10	70-81200100	SEAL RING	JOINT D'ETANCHEITE	1	\$6.36
11	KW-105	DRIVER & O-RING REPL. KIT	TROUSSE/REPL. TIGE/JOINTS TOR.	1	\$0.00
12	70-81200120	CYLINDER	CYLINDRE	1	\$20.86
13	70-81200130	WASHER	RONDELLE	1	\$6.20
14	70-81200140	PIPE	TUYAU	1	\$7.97
15	70-81200150	BUSHING	BAGUE	1	\$6.04
16	KW-105	DRIVER & O-RING REPL. KIT	TROUSSE/REPL. TIGE/JOINTS TOR.	1	-
17	70-81200170	BODY	CORPS	1	\$35.35
18	70-81200180	SPRING	RESSORT	1	\$6.20
19	70-81200190	GUIDE BUSHING	BAGUE DU GUIDE	1	\$11.19
20	KW-105	DRIVER & O-RING REPL. KIT	TROUSSE/REPL. TIGE/JOINTS TOR.	1	-
21	70-81200210	NAIL GUIDE	GUIDE POUR CLOUS	1	\$9.58
22	70-81200220	QUICK CONNECT (MALE)	RACCORD A CONNECTION RAP. (MALE)	1	\$7.13
	70-8120MBIL	8120P BILINGUAL MANUAL	8120P MANUEL BILINGUE	1	\$24.17