

Space Scooter[®] Junior

Owner's manual

Please read and understand this manual before allowing yourself or your child to use the Space Scooter[®] Junior. If you need any assistance, please contact your dealer. We wish you lots of fun with your Space Scooter[®] Junior.



**IMPORTANT!: THIS IS A MECHANICAL PRODUCT
AND IT NEEDS PERIODICAL MAINTENANCE!
READ THIS MANUAL BEFORE YOU START!**

WARNING: adult assembling required.

WARNING: Not suitable for children under three years.



Index

Safety warnings..... 3

Safety instructions 4

Know your Space Scooter® Junior 7

Unfolding your Space Scooter® Junior..... 8

Folding your Space Scooter® Junior..... 10

How to ride the Space Scooter® Junior 11

Check your Space Scooter® Junior 12

 Check collar clamp 12

 Check wheels and bearings..... 12

 Check quick release..... 12

 Check flywheel and add ball bearing oil 14

Space Scooter® Junior F.A.Q. (frequently asked questions)..... 15

 The grip of the deck plate diminishes..... 15

 The chain skips or runs next to the gears (flywheel)..... 15

 The Space Scooter® Junior makes strange noises. 16

Warranty 17

Copyright..... 17

Safety warnings

AN IMPORTANT MESSAGE TO PARENTS / GUARDIANS:

This manual contains important information. For your child's safety, it is your responsibility to review this information with your child and make sure that you and your child understands all warnings, cautions, instructions and safety topics. We recommends that you periodically review and reinforce the information in this manual with younger riders of the Space Scooter® Junior and that you are required to inspect and maintain your child's Space Scooter® Junior to insure their safety.

GENERAL WARNING:

Riding the Space Scooter® Junior can be a hazardous activity, during which it is possible to get into dangerous situations and/or lose control and/or fall. If such things occur you can be seriously injured or die even while using proper safety precautions. **USE AT YOUR OWN RISK AND USE COMMON SENSE.**


WARNING:

The air spring is filled with highpressure air. Do not disassemble or destroy it. Never throw it into fire for it may cause the air spring to explode.

Safety instructions

- Always wear safety equipment such as helmet, knee pads, wrist guards and elbow pads. Always wear a helmet when riding your scooter and keep the chin-strap securely buckled.
- Always wear shoes.
- Ride on smooth, asphalted surfaces away from motor vehicles.
- Avoid sharp bumps, drainage grates, and sudden surface changes.
- Avoid streets and surfaces with water, sand, gravel, dirt, leaves, and/or other disturbances. Wet weather impairs traction, braking, and visibility.
- Do not use the Space Scooter® Junior in the dark.
- Brake will get hot from continuous use. Do not touch the brake lever after using the brake.
- Avoid excessive speeds associated with downhill rides.
- Adults must assist children in the initial adjustment and setup procedures to unfold the Space Scooter® Junior. Adjust handle bars, brakes and steering to height, before using the Space Scooter® Junior.
- Obey all (local) laws and regulations.
- Watch out for pedestrians.
- Do not exceed the 60 kilograms of total weight on the Space Scooter® Junior.
- Do not allow children under age of four (4) to use the Space Scooter® Junior. Children under age fourteen (14) should ride with adult supervision at all times. All children and preteens should ride the Space Scooter® Junior with adult guidance at all times.

- The rider's weight, size or age does not necessarily means a child is able to ride or maintain control of the Space Scooter® Junior.
- A parent's decision to allow his or her child to ride the Space Scooter® Junior should be based on the child's maturity, skill and ability.
- The user should pay attention to surroundings to avoid sudden braking and sudden turning which may cause the user fall down, causing injury to yourself or the people around you.

 *Always ensure child is wearing proper protective equipment such as an approved safety helmet, knee pads, wrist guards and elbow pads.*

A helmet may be legally required by local law or regulation in your area. A child should always wear shoes, never ride bare footed or in sandals, and keep shoelaces tied and out of the way of the wheels and ore chain system.


 **WARNING:** *ALWAYS INSPECT SCOOTER PRIOR TO RIDING.*


Properly inspecting and maintaining your space scooter can reduce the risk of injury. Always inspect your Space Scooter® Junior before riding and regularly maintain it.

 **WARNING:** *CHECK LOCAL LAWS REGARDING SPACE SCOOTER® JUNIOR USE.*

Check local laws and regulations to see where and how you may use your scooter legally. In many states and local areas scooter riders are required BY LAW to wear a helmet. Check local laws and regulations

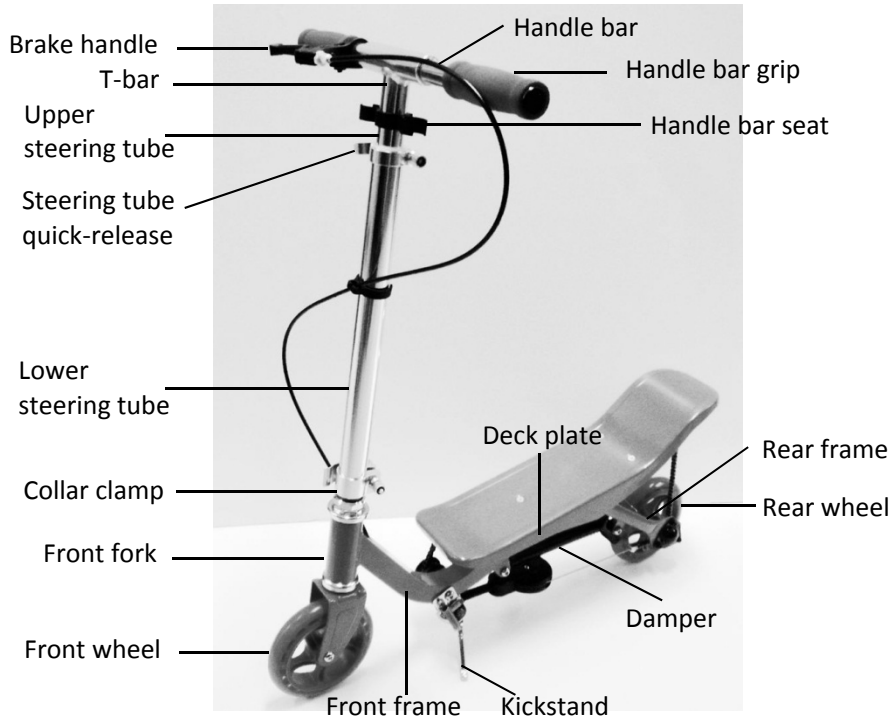
regarding laws governing helmet use and Space Scooter® Junior operation in your area.

 **WARNING:** *THE SPACE SCOOTER CANNOT DRIVE BACKWARDS DUE TO ITS DESIGN.*

 *FAILURE TO USE COMMON SENSE AND HEED THE ABOVE WARNINGS FURTHER INCREASES RISK OF SERIOUS INJURY. EVEN WHEN EVERY POSSIBLE SAFETY PRECAUTIONS IS MET, USE AT YOUR OWN RISK. ALWAYS USE CAUTION.*

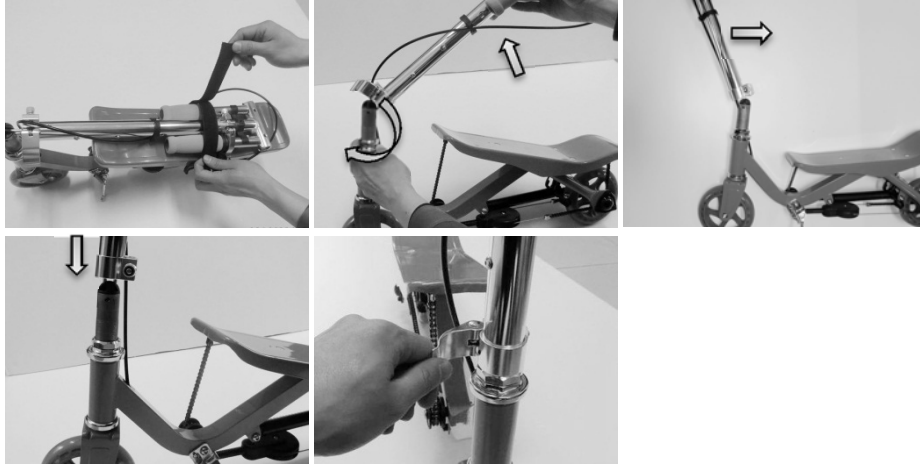
Know your Space Scooter® Junior

Unpack your Space Scooter® Junior and inspect it for scratches in the paint and/or dents that may have occurred during shipping. Because your Space Scooter® Junior was assembled and packed at the factory, there should not be any problems, even if the box has a few scars or dents.



⚠ WARNING: DO NOT USE PARTS MANUFACTURE BY OTHER COMPANIES WITH YOUR SPACE SCOOTER® JUNIOR. The Space Scooters have been built to certain design specifications. The original equipment supplied at the time of sale was selected on the basis of its compatibility with the frame, fork and all other parts. Certain aftermarket products may not be compatible.

Unfolding your Space Scooter® Junior



1. Undo the black Velcro belt from your Space Scooter® Junior
2. Make sure the collar clamp is unlocked; if not, unlock it.
3. Raise the steering tube and turn it 180 degrees to point the front wheel forward.
4. Lower the vertically positioned steering tube onto the upper end of the front fork following the integrated rail. Make sure the upper end of the front fork slides completely into the steering tube.
5. Tighten the quick-release of the collar clamp to lock the steering tube to front fork.
6. Check to see if the steering tube is firmly locked to the front fork. If not, adjust nut of quick-release and lock again.

⚠ WARNING: *Failure to properly secure the quick-release lever may cause the steering-tube to pull out while riding which may cause you to lose control and fall! Check all locks thoroughly and on a regular basis.*



7. Take the handle bars from the handle bar seat. Insert the left and the right handle bars into the T-tube while pressing the spring-loaded buttons. Make certain BOTH handle bars are properly locked into the T-bar by spring-loaded buttons.



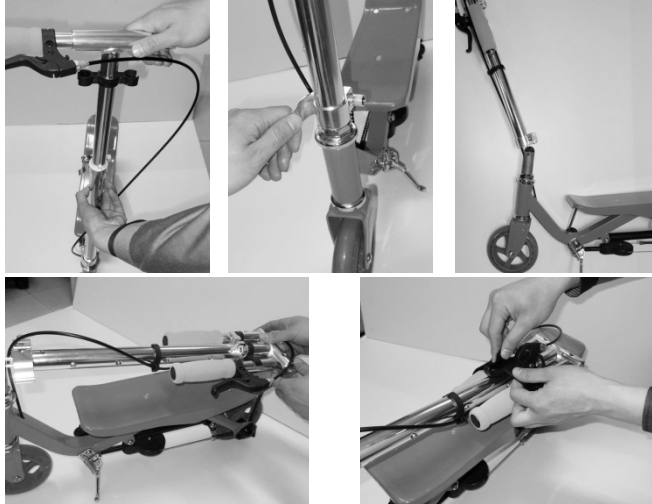
8. To adjust the height of the handle bars: open the quick-release lever.
9. Press the spring-loaded button, slide T-bar to desired position, and make sure the spring-loaded button is locked into one of the three holes of the tube.
10. Re-secure the quick-release lever to lock steering tube into place.

⚠ WARNING: *Failure to properly secure the quick-release lever may cause the T-tube to telescope up or down while riding which may cause you to lose control and fall! Check all locks thoroughly and on a regular basis.*

Folding your Space Scooter® Junior



1. Folding the handle bar: Pull out handle bars from T-tube while pressing the spring-loaded buttons on the handle bars.
2. Fasten the handle bars to the seat.



3. Folding the steering tube: Open quick-release of the steering tube, push the spring-loaded button and push down T-bar. Let the spring-loaded button lock into the hole at the lowest end of steering tube, then close the quick-release.
4. Open quick-release of collar clamp, pull steering tube upwards and then lay down steering tube to horizontal position.
5. Tie handle bars to the deck with the included belt.

How to ride the Space Scooter® Junior

Hold the handle bars with two hands. (1) Place one foot on the front end of the deck and kick the ground with the other foot to push Space Scooter® Junior forward. (2) When there is enough speed, stand on the deck with two feet. (3) Now shake the deck with your left foot and right foot alternately to sway the deck of the Space Scooter® Junior to move forward. For enhanced cornering, lean slightly into the direction of the turn. For controlled stops, apply brake by grasping brake handle slightly to slow down the speed of the scooter. Do not grasp brake handle suddenly. We recommend that you practice applying brake pressure at various speeds and in an open area free from obstructions before riding your scooter around others.



⚠ WARNING: Riding the scooter in an incorrect way may cause risk of falling down and damaging the Space Scooter® Junior.

<p>Do not place your feet on or over the outer edge of the board.</p>	<p>Do not place your feet on or over the outer edge of the board.</p>	<p>Riding from steps is forbidden.</p>

Check your Space Scooter® Junior

Check collar clamp

Check the quick-release of collar clamp to see if it is tightened securely. If adjustment is needed you can adjust the collar clamp by taking these next steps:

1. Open the handle of the quick-release.
2. Adjust the nut of the quick release.
3. Close the handle of the quick release. If it is not tightened securely enough, repeat steps 1 to 3.



⚠ WARNING: *Failure to properly secure the collar clamp may cause unexpected behavior of the steering tube while riding which may cause risk of injury or death.*

Check wheels and bearings

Wheels and wheel bearings are not maintenance free. It is the responsibility of the owner or guardian to periodically inspect the wheels for wear and tear, the axle for proper tightness and bearings for side to side play and loose parts. When a wheel or wheel bearing develops play, this is an indication of excess wear and replacement is necessary.



Check quick release

Check all quick-releases before riding; make sure all quick-releases are closed and tightened. If adjustment is needed you can adjust the quick-release by this:

1. Open the handle of the quick-release.
2. Adjust the nut of the quick release.
3. Close the handle of the quick release. If it is not tightened securely enough, repeat steps 1 to 3



Adjust the brake cable of the Space Scooter® Junior

Always check the brake before riding by following the next steps:

Grasp the brake handle and push the Space Scooter® Junior forward. The rear wheel should not turn, and Space Scooter® Junior should not move forward. Releasing the brake handle, the scooter can be pushed forward and should move without jamming or stalling. If the brake does not work, adjust the brake system before riding.

Small adjustment: adjust the screw of the brake handle to loosen or tighten the tension of the brake cable.

Large adjustment:

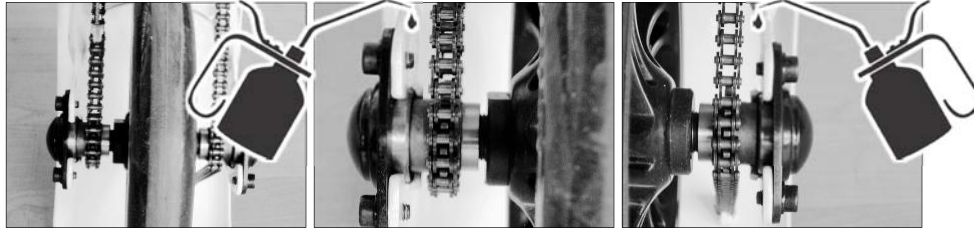
1. Loosen the nut that is located at the end of the brake cable.
2. Adjust the position of the brake cable relatively to the nut. You could use sharp-nose pliers to achieve this.
3. Now tighten the cable nut.

⚠️ WARNING: *Failure of the brake may cause the Space Scooter® Junior to reach high speeds, causing the driver to lose control, and could result in injury or death.*



Check flywheel and add ball bearing oil

Check the flywheels (located on the rear axis) before riding. Make sure there are no abnormal noises coming from the Space Scooter when moving the board up and down. If there is an abnormal noise, flip the Space Scooter® Junior upside down and add 3 to 5 drops of ball bearing oil between the gaps of the flywheel and bearing. Wait for a minute to let ball bearing oil saturate the flywheel. The user should add ball bearing oil approximately every month to keep the flywheels running smooth and increase the Space Scooter's durability, even if there aren't any abnormal noises coming from the Space Scooter.



Space Scooter® Junior F.A.Q. (frequently asked questions)

The grip of the deck plate diminishes.

Please contact your local dealer by e-mail with a clear description of the problem.

HOW TO: REPLACING THE GRIP STICKER.

- a) Remove the existing sticker. You can easily peel off the sticker with your nails and fingers. Gently pull the sticker off.
- b) Make sure the deck plate is clean. (defatted)
- c) Starting at the square end, peel off a few centimeters of the sticker. (This is applied at the front side of the Space Scooter® Junior)
- d) Place the square end of the sticker straight onto the deck plate.
- e) Pull the sticker's back-side off bit by bit whilst rubbing the sticker onto the deck plate. Make sure to avoid creating air pockets while applying.

The chain skips or runs next to the gears (flywheel).

Please contact your local dealer by e-mail with a clear description of the problem. The spring that keeps the chain in place is probably stretched.

HOW TO: REPLACE THE CHAINSPRING.

- a) Lift the chain from the gears (how to do this you will find in the workshop manual available on www.spacescooter.eu)
- b) Loosen the inbus bolt (hex key) that holds the spring on the front.
- c) Loosen the inbus bolt (hex key) that hold the other side of the spring.
- d) Insert the new spring and follow step a, b, c in reverse order.

The Space Scooter® Junior makes strange noises.

The Space Scooter® Junior needs its maintenance just like a regular bike. On www.spacescooter.eu you will find a maintenance manual. Here you will find a few practical tips.

- (a) A chain is handled with chain spray. Chain spray is a dry lubrication and ensures the chain does not attract dirt. You can buy chain spray at the better bike shop or hardware store. We recommend to **not use WD40 or silicone spray**. If the chain becomes rusty, you can clean the chain with WD40, dry it off thoroughly and then lubricate the chain with chain spray.

- (b) The ball bearings can be greased with ball bearing grease. To do this, you need to disassemble the rear wheel. **Don't use WD40** for this removes the grease from the bearings and result in defects.

- (c) Regularly make sure all parts of the Space Scooter are fasten tight. The caps under the deck plate can get loose by vibrations. Therefore it is important that you regularly check everything to see if it's still in place and fastened tight. Although the Space Scooter is put together with the utmost care, we cannot avoid parts getting loose due to vibration. To ensure screws will stay tight, you can use a product such as Loctite.

All rights reserved. All (brand)names belong to their respective owner(s).

Warranty

The manufacturer warrants this product to be free of manufacturing defects for a period of 12 months from date of purchase. This Limited Warranty does not cover normal wear and tear, or any damage, failure or loss caused by improper assembly, maintenance, or storage.

This Limited Warranty will be void if the product is ever:

- Used in a manner other than for recreation.
- Modified in any way.
- Rented.
- Repaired with parts other than the original Space Scooter® Junior parts.

The manufacturer is not liable for incidental or consequential loss or damage due directly or indirectly to the use of this product.

The manufacturer does not offer an extended warranty. If you have purchased an extended warranty, it must be honored by the store at which it was purchased. For your records, save your original sales receipt with this manual.

Copyright

The name Space Scooter®, specified in this manual is a trademark of Easy2. Company B.V. Consequently, it is more, without permission from Easy2. Company B.V., expressly prohibited for a sign (in the course of trade) to use which is identical with or similar to the brand Space Scooter®. No part of this manual may be copied, used, duplicated and/or be set on any medium, without permission from Easy2. Company B.V.

Printing and type errors reserved. Specifications are subject to change without further notice.

Easy2. Company B.V.

Tel.: +31 (0)72-850 26 01

Website: <http://spacescooter.eu/>

E-mail: support@spacescooter.eu