

Space Scooter®

MAINTENANCE MANUAL



⚠️ WARNING: DO NOT USE THE PARTS MANUFACTURE BY ANOTHER COMPANY WITH YOUR SPACE SCOOTER.

Read and understand this entire manual before replacement the part to your scooter!

DO NOT USE THE PARTS THAT MANUFACTURE BY ANOTHER COMPANY WITH YOUR SPACE SCOOTER. All parts of Space Scooters have been built to certain design specifications. The original equipment supplied at the time of sale was selected on the basis of its compatibility with the frame, fork and all other parts. Parts from other products may or may not be compatible.

Replacement For The Air-Spring System

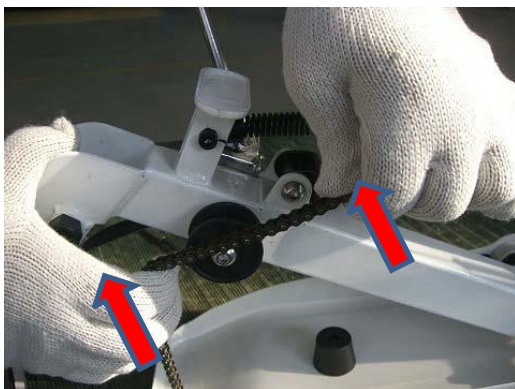
If the Air-Spring system is not working, please replace the new Air-Spring system to it before riding.

Tools :

Two pcs 5mm Allen wrenches

One pcs 17mm open end wrench

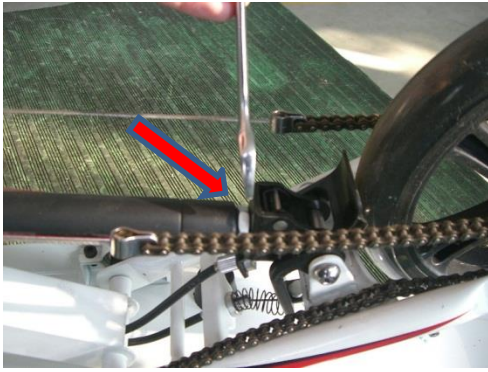
Steps:



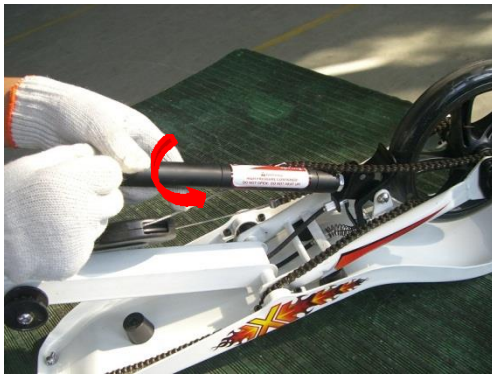
1. Take off the chain from the chain wheel on the front position.



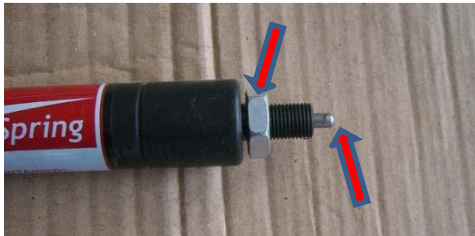
2. Loosen the lock screw on the position in the "U"-header, loosen it by inner hexagon spanner.



3. Loosen the screw nut of the Air-Spring system.



4. Rotating to take off the Air-Spring system.



5. Check the new Air-Spring system

Note: (1) Put the Nut nearly at the end of the screw
(2) Put in the needle, smooth top end outwards



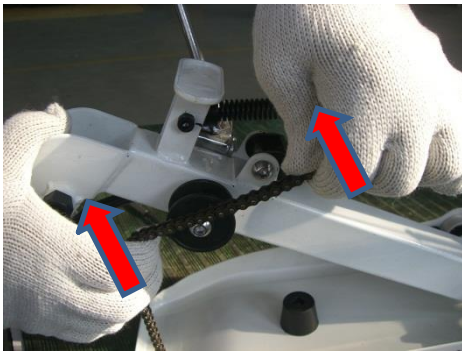
6. Rotated the Air-Spring system to install it by the end screw of nut to the desired position, and make sure the Air-Spring system is locked into the place. **Note: Pay attention to check with the position of the chain system.**



7. Tighten and locked the screw on the position of the "U"-header.



8. Tighten and locked the screw nut.



9. Put the chain directly tightening it into the chain wheel position, checking the driving system before riding, make sure there is working well.
10. Check the new Air-Spring system working well before riding, make sure all parts release are closed and tightened.

Replacement For The Flywheel

If the driving system of flywheel is not working, please replace the new flywheel before riding.

Tools:

One pcs 4mm Allen wrench

One pcs needle nose pliers

Step 1: Take off the broken flywheel



1. Place the scooter upside down on the table and take off the chain from the chain wheel on the front position.



2. Remove rear chain.



3. Unscrew the bearing cap screw with the Allen wrench.



4. Open the bearing cap.



4. Remove the two retainer ring with pliers.



6. Remove the bearing 6000.



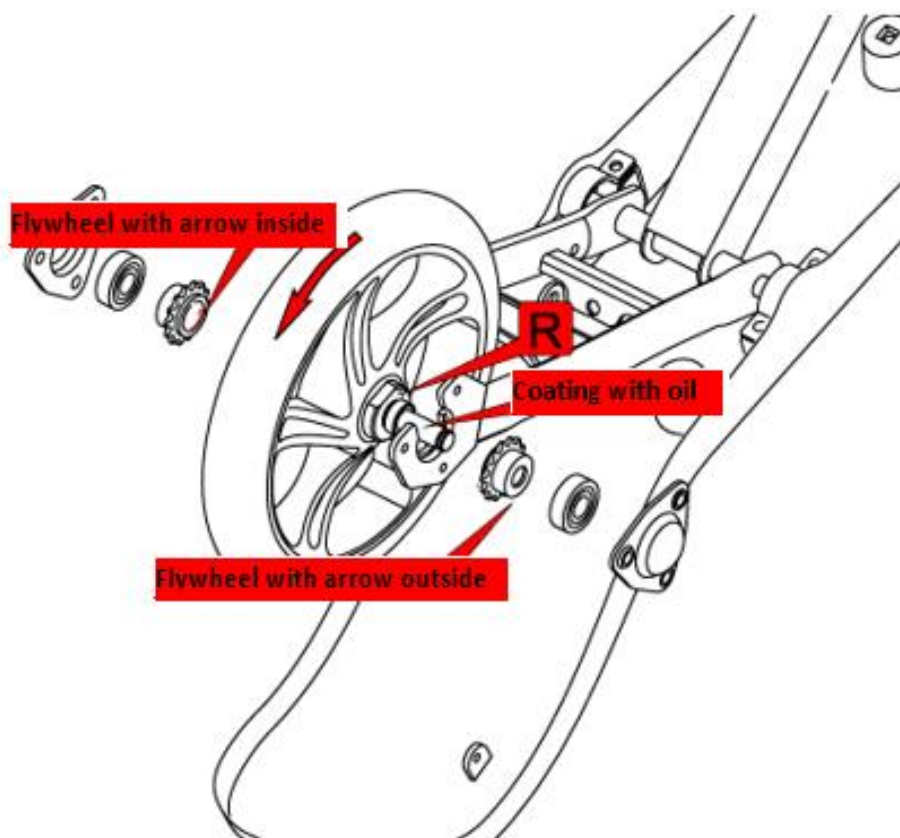
7. Remove the rear wheel assembly.



8. Rotated to remove the both right and left flywheel.

Step 2: Replacing new flywheel:

Notice: Assemble the rear wheel and flywheel according to the direction on the previous pictures. The scooter cannot run if assembled in wrong direction, and this would result in damage of the rear wheel assembly and flywheel.



1. Check the bearing 6800 is still in both side of rear wheel axle, if not, put it in.

(Note: Left and Right sides of the rear wheel inserts marked by "L" and "R") The two flywheels are one side marked with characters and directional arrow on the inside or outside of the flywheel. The flywheel with the arrow on the inside has to be placed on the left side of the wheel, the flywheel with the arrow on the outside has to be placed on the right side of the wheel. The toothed gears of the two flywheels are put into the inner side.

2. Put the scooter body upside down, with the rear part of scooter facing you.



5. Place the rear wheel on the rear wheel frame; note the direction!

6. Mount on the bearing 6000 with both sides.



5. Fit on the retainer ring.

6. Cover with bearing cap, and tighten screws.



7. Put the chain to the chain wheel.

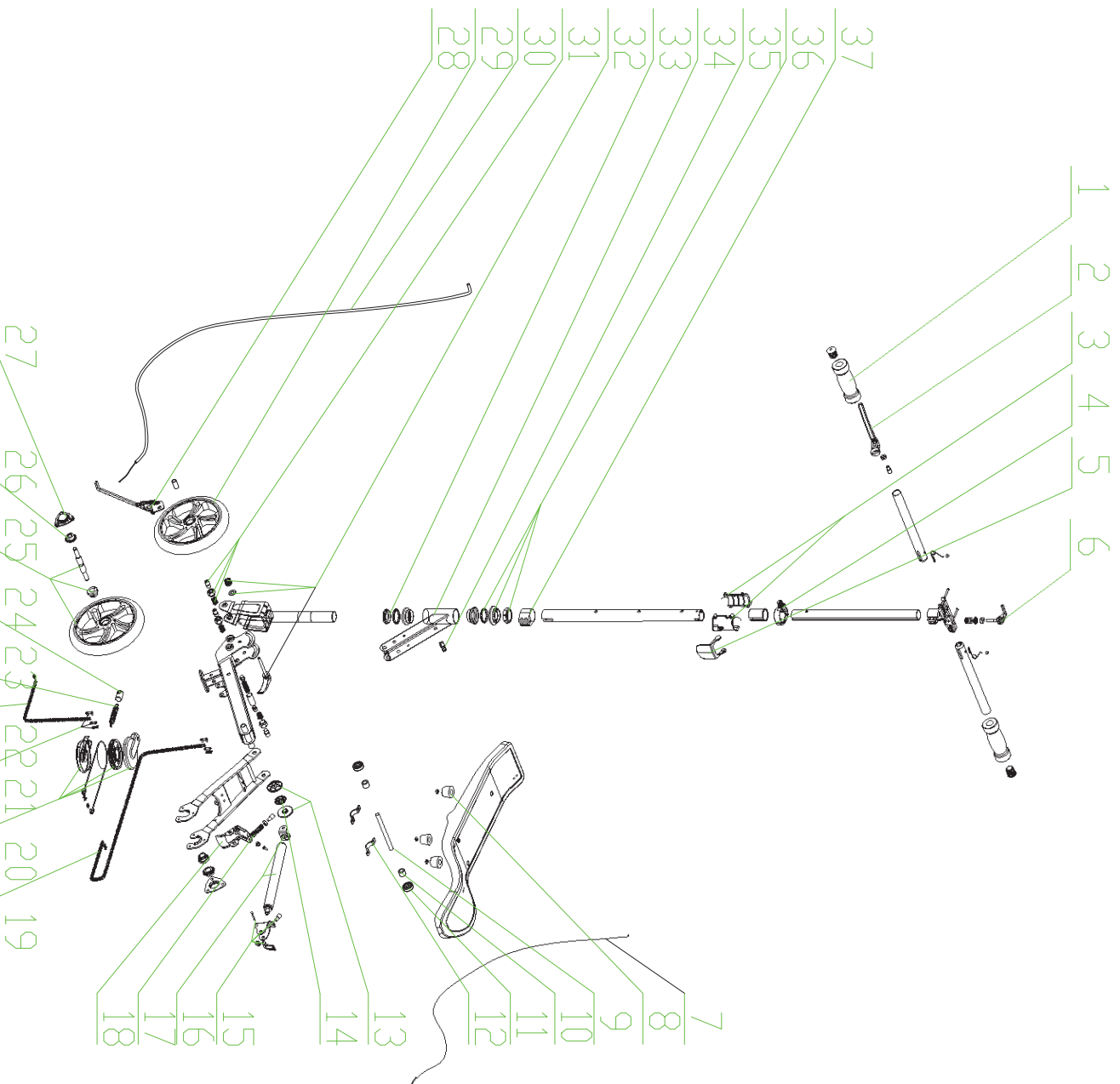
8. Put the chain to the chain wheel Of the other side.



9. Put the chain directly tightening it into the guide chain wheel position, checking the driving system before riding to make sure there is normal working.

10. The final direction of wheels should be as shown above.

XLD SPACE SCOOTER 型号：X580



Item	Part Number	Description	Remarks
1	1312-10-020	grip handle	
2	1312-10-030	brake handle	
3	1312-10-150	feeding trigger box	
3	1312-10-160	cap folding trigger box	
4	1312-10-130	upper steering tube	
4	1312-10-140	cable clip on steering tube	
5	1312-10-170	trigger of air-spring control cable	
6	1312-10-040	quick release of handle	
7	1312-60-030	cable for air-spring control	
8	1312-30-030	cushion for deck	
9	1312-30-040	axle for deck	
10	1312-30-050	deck axle bushing	
11	7044-01-004	Bearing	
12	1312-30-020	deck bearing retainer	
13	1312-20-080	guide wheel inner guard	
13	1312-20-090	guide wheel outer guard	
14	1312-20-070	guide wheel	
15	1312-60-040	trigger arm of air-spring	
16	1312-40-080	brake spring	
16	1312-60-010	air spring	
16	1312-60-020	V shape connector for air spring	
18	1312-40-030	brake	
19	1312-50-090	chain	
20	1312-50-050	upper cap for steering wheel	
20	1312-50-060	lower cap for steering wheel	
20	1312-50-070	steering wheel	
21	1312-50-120	chain connector	
21	1312-50-150	chain connector	
22	1312-50-110	chain	
23	1312-50-020	steering wheel spring	
24	1312-50-010	cap for steering wheel spring	
25	1312-40-080	left plug-in for rear wheel	
25	1312-40-090	right plug-in for rear wheel	
25	1312-40-110	rear axle	
26	1312-40-120	ty wheel	
27	1312-40-020	cap for rear wheel bearing	
27	1312-40-155	needle bearing	
28	1312-20-120	stard by	
29	1312-10-210	PU wheel	
30	1312-40-070	break cable	
31	1312-10-070	folder bushing	
31	1312-10-080	folder spring	
31	1312-10-090	folder pin	
31	1312-20-020	button spring	
31	1312-20-040	folder button	
32	1312-10-180	folder quick release	
33	1312-10-120	bearing for fork	
34	1312-20-010	front frame	
35	1312-10-110	cable clip	