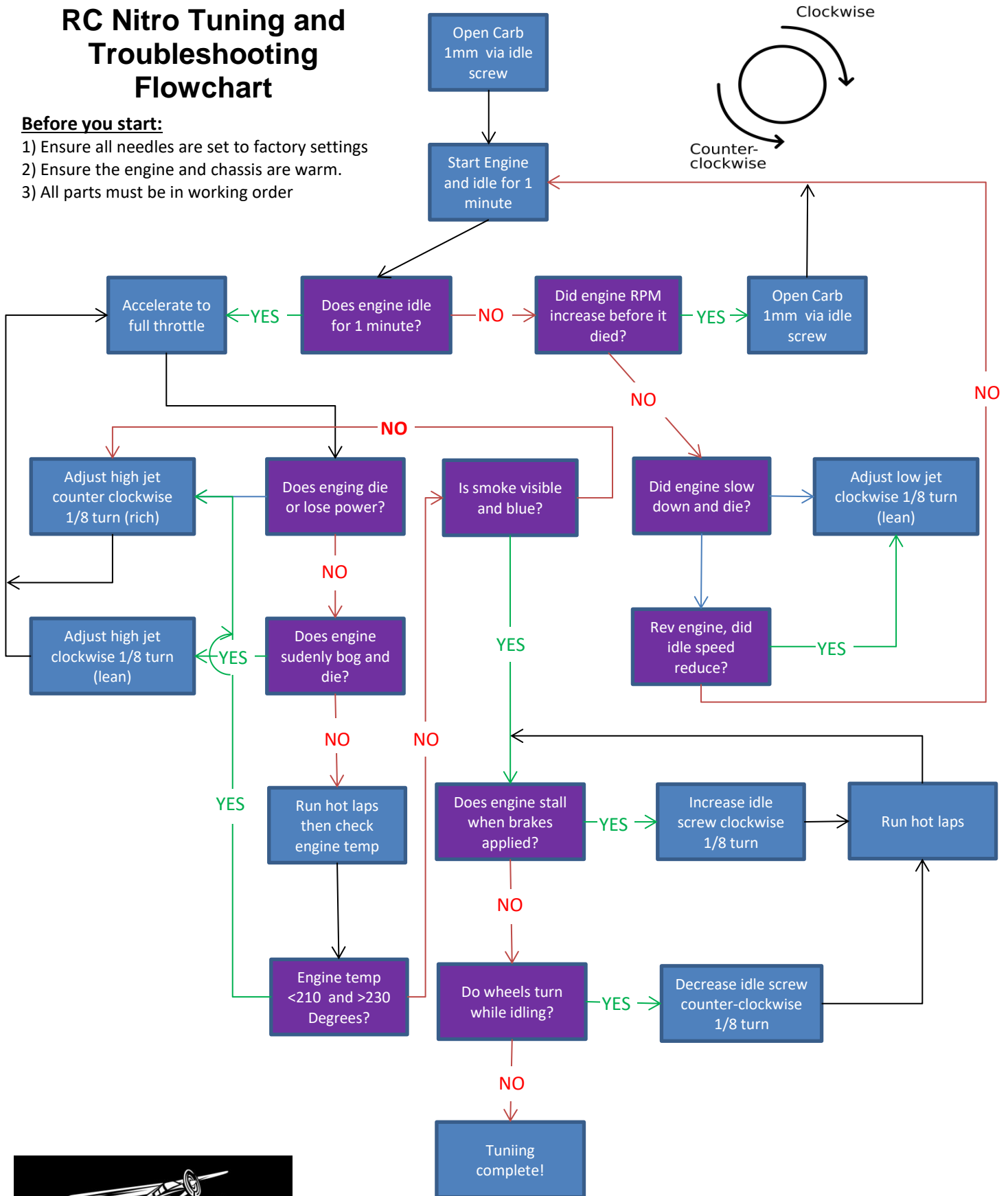


# RC Nitro Tuning and Troubleshooting Flowchart

## Before you start:

- 1) Ensure all needles are set to factory settings
- 2) Ensure the engine and chassis are warm.
- 3) All parts must be in working order



[www.parisjunctionhobbies.com](http://www.parisjunctionhobbies.com)

Phone: 519-442-5800

Address: 300 Grand River Street,