



Sergis Lab



CELEBRATING
50
YEARS!

3RD GENERATION • HANDMADE IN CALIFORNIA, USA • EST. 1969



3RD GENERATION
HANDMADE
IN CALIFORNIA

CELEBRATING
50
YEARS!

We cherish this business that involves our entire family.
We create and learn together in a beautiful environment
and travel the world, working with the most
inspiring individuals who value our art and craftsmanship.

Simply put, we love what we do!
This is what I consider our sweetest success.
Thank you for 50 incredible years of business!



We make our Bracelets in two finishes...



Satin Brushed or Mirror Polished

Quality Craftsmanship

Our family makes each piece of jewelry by hand in our Northern California Studios, using ancient metalworking techniques. Our unique designs are meant to be worn always, aging gracefully and lasting for generations.

Metals

Our bracelets are made of solid metals: Pure Copper and two copper alloys; Jewelers' Brass and German Silver. Each bracelet is heat treated to enhance its adjustability.

Copper

Our metal of choice, copper, has been worn and cherished around the world for thousands of years. Science has found copper to be an essential mineral for the human body. Since copper may be absorbed through the skin, wearing a copper bracelet may serve as a natural time released source of this precious element.

Magnets

Each magnetic bracelet has two rare-earth magnets positioned to be worn over the wrist's pressure points. Different cultures have worn magnets for centuries, believing them to influence circulation and benefit the energy and life force of the wearer.



Nikolas Sergio Lub
carrying on his family's craft



Magnetic & Classic Copper

We offer both Magnetic and Classic (i.e. Non-Magnetic) Bracelets.

Beneath each design find its name, price symbol, and SKU.

A "🧲" next to a design number signifies a bracelet with magnets.



Golden Infinity - 🌊712🧲 ○12



Mayan Brass - ☆752🧲 🌊30



Odd Beauty - ▲851🧲



Infinity Silver - 🌊711🧲 ○11



Wild Neighbors - 🌊559🧲 ○59



Silver Creek - 🌊554🧲



Mayan Silver - ☆751🧲 🌊51



Moon - ▲593🧲 ☆248



Inner Silver - ◆750🧲 ◆650



Copper Infinity - 🌊706🧲 ○06



Copper Band - 🌊522🧲 ○322



Copper Creek - 🌊555🧲



Mayan Copper - ☆758🧲 🌊630



Two Worlds - ▲548🧲 ☆48



Odd Copper - ▲852🧲

Reference these symbols with our order form for item prices: ○🌊☆▲◆◇☆*



Textured Copper - 553 53



Textured Silver - 753 253



Golden Creek - 558



Hammered Brass - 726 33



Hammered Copper - 733



Vineyard - 527



Hugging Metals - 819 319



Embrace - 820 320



Luna - 821 321



Venus - 822 222



Ore - 846 346

Each Bracelet Tells a Different Story & comes individually packaged with its unique origin tale.

• EMBRACE •



MEDIUM MAGNETIC

This playful design illustrates a slice of human emotion, as a copper strand wraps itself around silver for a hug. This piece represents human connection & love through jewelry.



Handmade with German Silver & Pure Copper. Set with two rare-earth magnets.

= Indicates a bracelet with magnets.





Connection - ☆808 🇺🇸



Double Helix - ▲780 🇺🇸 ☆80



Carnival - ◆785 🇺🇸 ▲85



Inner Peace - ◆855 🇺🇸



High Tide - ◆840 🇺🇸 ◆439



Yin Yang - ☆731 🇺🇸 🌊31



Spring Wave - ▲770 🇺🇸 ☆70



Mardi Gras - ◆755 🇺🇸



Rainbow - ◆741 🇺🇸 ◆41

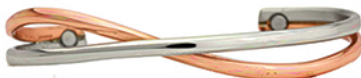


Silver Tide - ◆844 🇺🇸 ◆444

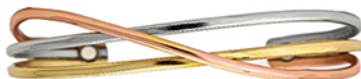
Reference these symbols with our order form for item prices: ○ 🌊 ☆ ▲ ◆ ◆ ◆ *



Copper Silver Dance - ☆831☺ ⚡ 431



Life's Force - ▲816☺



Fire Dancer - ▲838☺ ☆338



Meditation - ◆854☺ ▲54



Maverick - ◆841☺ ◆341



Copper Helix - ▲779☺



Rainbow Wave - ▲766☺ ☆66



Sleeves - ◆833☺ ▲433



Cesar - ◆742☺



Copper Tide - ◆842☺ ◆442



Copper Swirl - ◆843☺ ▲443



Victorian - ◆743☺ ▲43

 = Indicates a bracelet with magnets.



Nepalese Cord - 507 07



Little Sage - 703 02



Sherpa's Rope - 737 37



Sweatlodge - 515 315



Wheat - 524 224



Light Sage - 775 75



New River - 746 42



Sage Bundle - 778 78



Copper Grapevine - 762 628



Copper Sage - 568 678

Reference these symbols with our order form for item prices:



Maypole Dance - 708 08



Harvest Dance - 709 09



Grapevine - 728 228



Path - 718 18



Ayurveda - 744 44



Goddess - 723 23



Timbuktu - 534 334



Sumerian Queen - 739 39



Quilt - 556 56



Honeysuckle - 782 82

• SHERPA'S ROPE •



MEDIUM MAGNETIC

Ancient design used to identify those seeking higher awareness. It shows the silver spirit holding the copper body, with the golden mind. In 1999



Sergio had the honor of gifting this bracelet to His Holiness the fourteenth Dalai Lama. Handmade with German Silver, Jewelers' Brass, & Pure Copper. Set with two rare-earth magnets.



= Indicates a bracelet with magnets.



Icon - \approx 715 15



Copper Ivy - Δ 716



Ripples - \diamond 830



Caduceus - \diamond 525 Δ 625



Shaman - \diamond 565 Δ 65



Tesla Coil - \diamond 754



Rainforest - \star 776 \approx 76



Cuzco - \star 791 \approx 91



Braid - \star 735 \approx 35



Copper Chain - \diamond 594 \diamond 694



Viking Braid - \diamond 557 \diamond 57



Life's Tapestry - \star 783 \diamond 83

Reference these symbols with our order form for item prices: \approx \star Δ \diamond \diamond \star



Sun & Moon - ◆ 787 ☺



Passages - ◆ 749 ☺



Roman - ◆ 740 ☺ ◆ 440



Horseman - ✱ 547 ☺ ◆ 247



Old Country - ✱ 588 ☺ ◆ 688



Prophecy - ◆ 530 ☺ ◆ 34



Tournament - ◆ 532 ☺



Rodeo - ✱ 589 ☺ ◆ 89



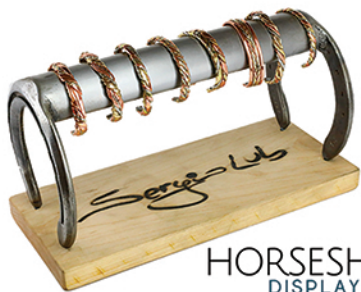
Hero's Journey - ✱ 590 ☺



Celtic - ✱ 789 ☺ ◆ 689

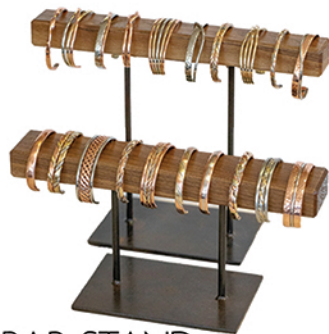


☺ = Indicates a bracelet with magnets.



**HORSESHOE
DISPLAY**

We make a variety of displays
to fit your unique needs,
and work with you to
customize a selection of
best selling designs for
your customer.



**BAR STAND
DISPLAY**



**TALL
DISPLAY**



**BOARD
DISPLAY**



**SMALL
DISPLAY**



**STARTER
DISPLAY**

Fitting - Choose your bracelet size. Apply one end on the soft underside of your wrist (approx. 2" from your wrist bone), and roll the bracelet on. Adjust the piece to fit comfortably on your wrist.

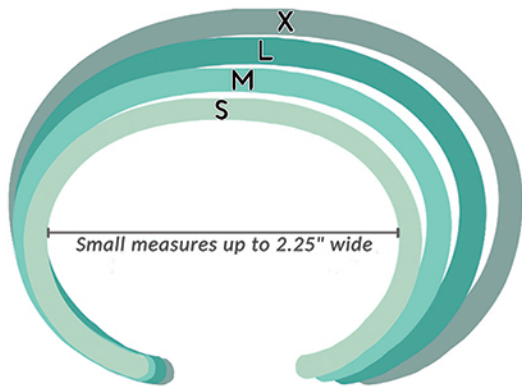


Quality Craftsmanship - Inspired by ancient metalworking techniques, we carefully handcraft each bracelet in our Northern California Studios. Our designs are meant to be worn always, aging gracefully and lasting for generations. Since we only use solid metals, you may use a polishing cloth when necessary to remove blemishes and restore your bracelet's shine.

Metals - We work with solid metals, including **Pure Copper** & different Copper alloys, such as;
Jewelers' Brass (85% copper, 15% zinc)
German Silver (65% copper, nickel, and zinc)



BRACELET SIZING



... To find your bracelet size, measure the circumference around your wrist...

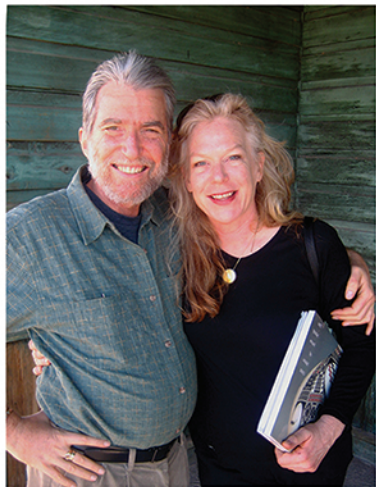


Small: up to 6" around

Medium: 6" - 7" around

Large: 7" - 8" around

X-Large: 8"+ around



From our family to yours,
Thank you for 50 incredible years!

Sergio Lob



Sergio Lub

is an American jeweler born in 1953. Over the past 50 years Sergio has traveled from the Andes to the Himalayas to meet fellow artisan jewelers learning their craft. He's remained dedicated to the tradition of wearing metals for both beauty and wellbeing.

Started in 1969 by Sergio and his father, today the business is a full-time third generation family affair. This includes Sergio's wife, the noted glass artist Gaye Frisk, and their two children Nik and Sonia, who both carry on their family's lineage, through their own signature designs.

📍 3800 VISTA OAKS DRIVE • MARTINEZ, CA 94553

Sergio's Lub
HANDMADE IN CALIFORNIA
EST. 1969

CELEBRATING 50 YEARS!



3RD
GENERATION



HANDMADE IN CALIFORNIA

📞 +1 (800) 234-2346

🌐 WWW.SERGIOLUB.COM

📌 /SERGIOLUBJEWELRY

📷 /SERGIOLUB

