

APRON FRONT ASSEMBLY

Steps to Complete Your Apron Front Sink Project

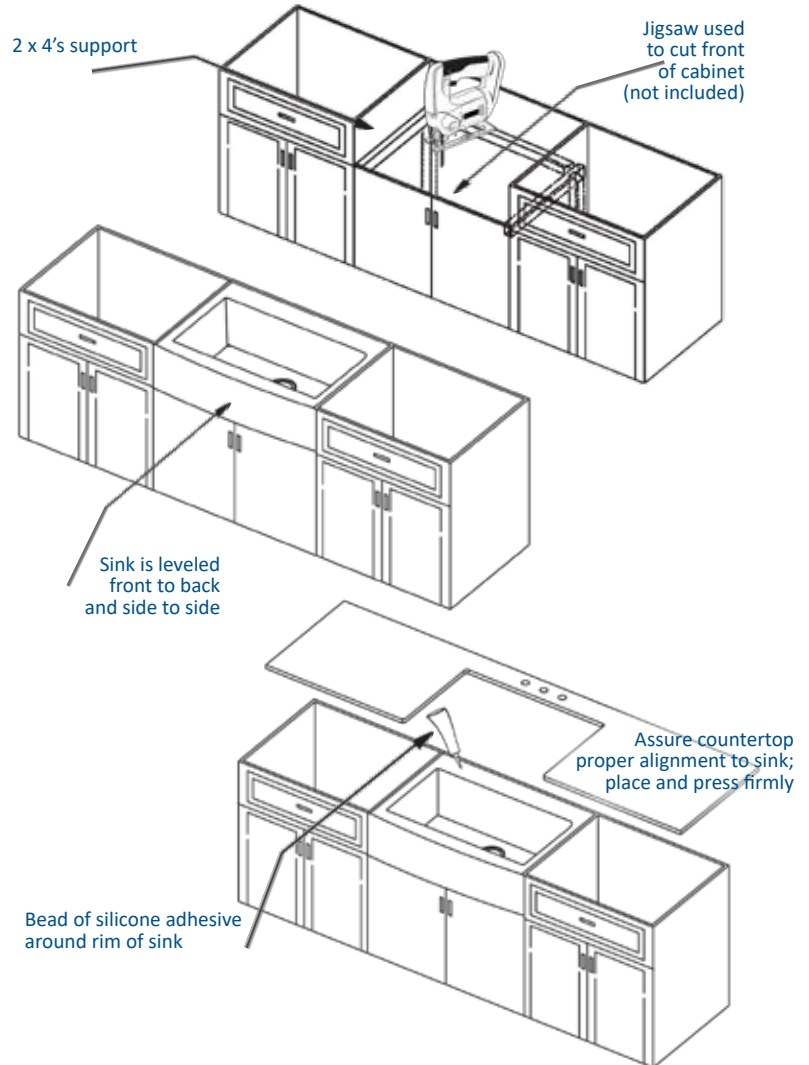
Farmhouse kitchen sinks may require custom cabinetry. We highly recommend consulting an experienced cabinet maker for assistance. Providing the cabinet maker with the actual sink will ensure a perfect fit.

- **Determine reveal type:** positive, flush mount or a negative reveal.
- **Create a custom support frame** using 2 x 4s or install support bars from front to back and along the inner sides of the cabinet. (See *Undermount install for plywood reinforcement.) The frame must adequately support the weight of the sink with water, underneath and all attachments. The support frame should be positioned so when installed, the sink is in line and level with the top of the cabinet. We strongly recommend bracing vertical supports down to the floor as well.
- **For layout,** no template is provided since each sink will vary slightly. After centering the sink, ensure adequate space for faucet, handles and spout, back-splash as well as full range of motion for faucet handles and spout. Use a pencil to outline the sink as the guide for the cut-out. Keep in mind the edge reveal type and make the proper cut-out in the countertop. We highly recommend using a professional installer.
- **Test fit the sink** into the cabinet front cut-out. The entire weight of the sink should be supported by the support frame. Verify the sink is in line and leveled front to back as well as side to side. Use shims, if needed, to level the sink.
- **Set the sink** and apply the Glacier Ice. Hold the sink in place to secure.
- **Apply a bead** of silicone around the top edge of sink. Make sure countertop is centered and properly placed accordingly. Remove any excess silicone from all surfaces.

3/8" Positive reveal - counter sits 3/8" back from edge of sink

Flushed reveal - counter is flush with edge of sink

1/8" Negative reveal - counter extends 1/8" over edge of sink (most popular)



- **Install the drain (not included)** according to the drain's installation instructions. Make sure a watertight seal exists on all drain connections.

TROUBLESHOOTING TIPS - APRON FRONT

| Issue | Reason | Solution |
|---|--|--|
| Finish is changing color or loosing its shine | Abrasive cleaners, soaps or other factors constantly in contact with finish. | Stop using abrasives and clean well and apply Glacier Ice sealer |
| There is a gap on the side | Sink wasn't installed level | Make sure your professional installer levels the sink with shims |
| Sink seems to be sagging from countertop | Proper sink supports were not used | 2 x 4's need to be built into the cabinet and down to the floor |