

WIDESPREAD TYPE TWO ASSEMBLY

Steps to Complete Your Faucet Install

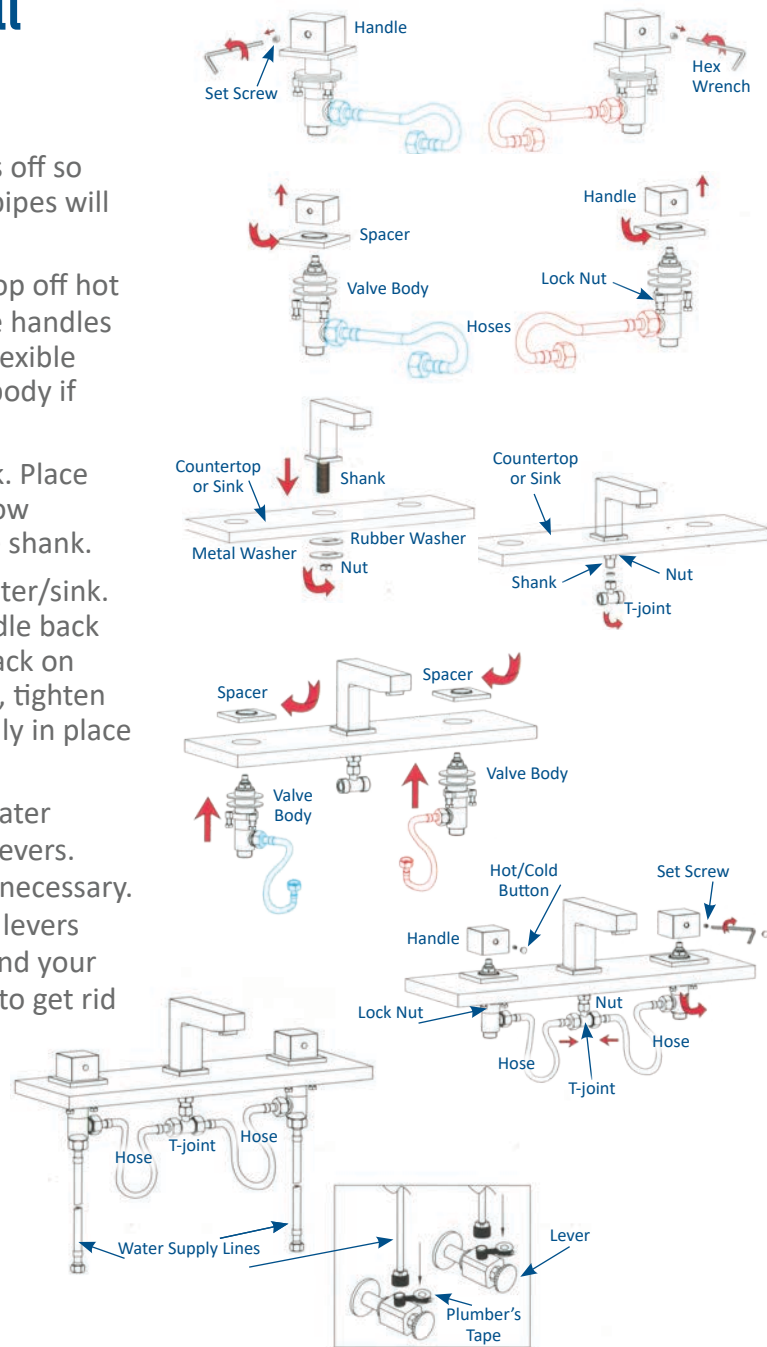
Applicable for the following 8" Widespread faucet series:

NBF-836 NBF-127
NBF-101

- **Turn the levers** on both the hot and cold water supply lines off so water will not be running through the pipes. These levers/pipes will be located under the sink in the cabinet.
- **Use hex (allen) wrench*** to loosen set screw in handles. (Pop off hot and cold water indicator buttons to reveal screws.) Remove handles and unscrew spacer from valve body. Fasten the hot/cold flexible hoses into the water supply holes on the side of the valve body if necessary.
- **Insert threaded shank** through center hole on counter/sink. Place rubber washer, metal washer and nut onto shank from below counter. Tighten nut. Connect and tighten the T-joint to the shank.
- **Insert handle valve body** into outer hole, underneath counter/sink. From above, screw spacer back onto valve body. Place handle back onto valve in desired position and tighten screw set. Pop back on hot/cold water indicator buttons. From below counter/sink, tighten nut on shank and lock nut on valve body until both are firmly in place against counter/sink. Tighten all nuts and screws.
- **Connect hoses from valve body to T-joint.** Then connect water supply line accordingly from base of valve body to base of levers. **(Water supply lines NOT included.)** Use plumber's tape* if necessary. With the faucet handles turned wide open, slowly turn the levers on the hot & cold water supply lines to the open position and your desired flow rate. Allow faucet to run for a couple minutes to get rid of any air pockets in the pipes.

* Allen (hex) wrench and plumber's tape are included

TOOLS NEEDED FOR ASSEMBLY (not included)



Questions, problems, missing parts? Before returning to your retailer, call our customer service department at 844.404.4242, 8:00 a.m. - 5 p.m., MT, Monday - Friday or email us at: support@novatto.com

TROUBLESHOOTING TIPS

Issue	Reason	Solution
Leakage under the handle	Spacer has come loose; Valve may be defective	Re-tighten spacer; Remove valve, check for cracks
Leaking from under the body	Cracked casing inside; Hoses may be loose	New faucet needed; Tighten hoses
Finish is changing color or is shiny	Abrasive cleaners, soaps or other factors constantly in contact with it.	Stop using abrasives; Replace parts
Water will not shut off completely	Valve may be defective	Remove valve, check for cracks