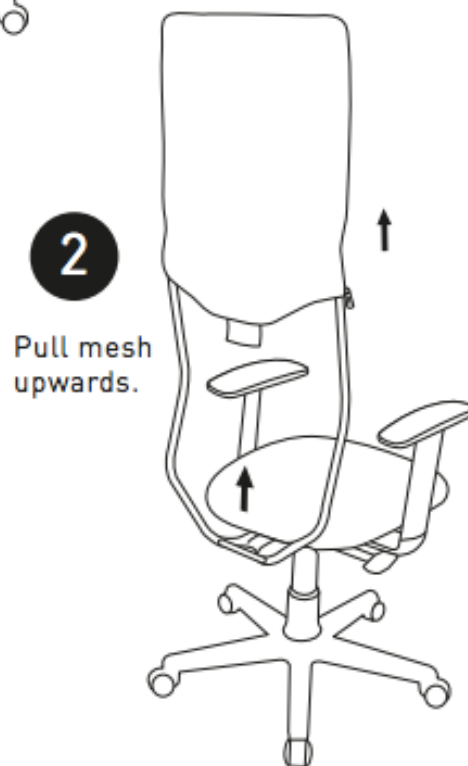
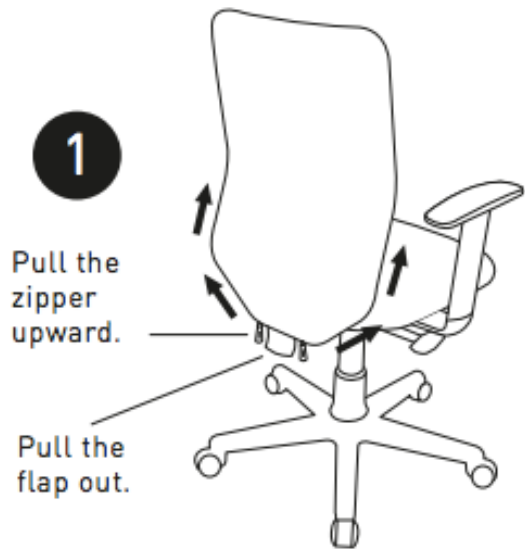


# HOW TO CHANGE THE ZIP-ON ZIP-OFF MESH



**3**

Mesh removed.



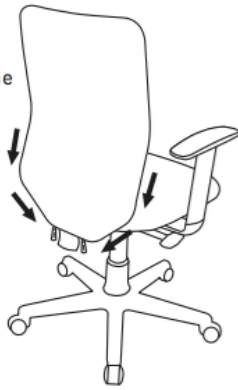
**4**

Insert new mesh.



**5**

Pull the ends of the zipper outward. Pull the zippers down.



**6**

Turn the flap inside and press it.



**7**

Viola, Your Fashionplus chair is NEW once again!!!

