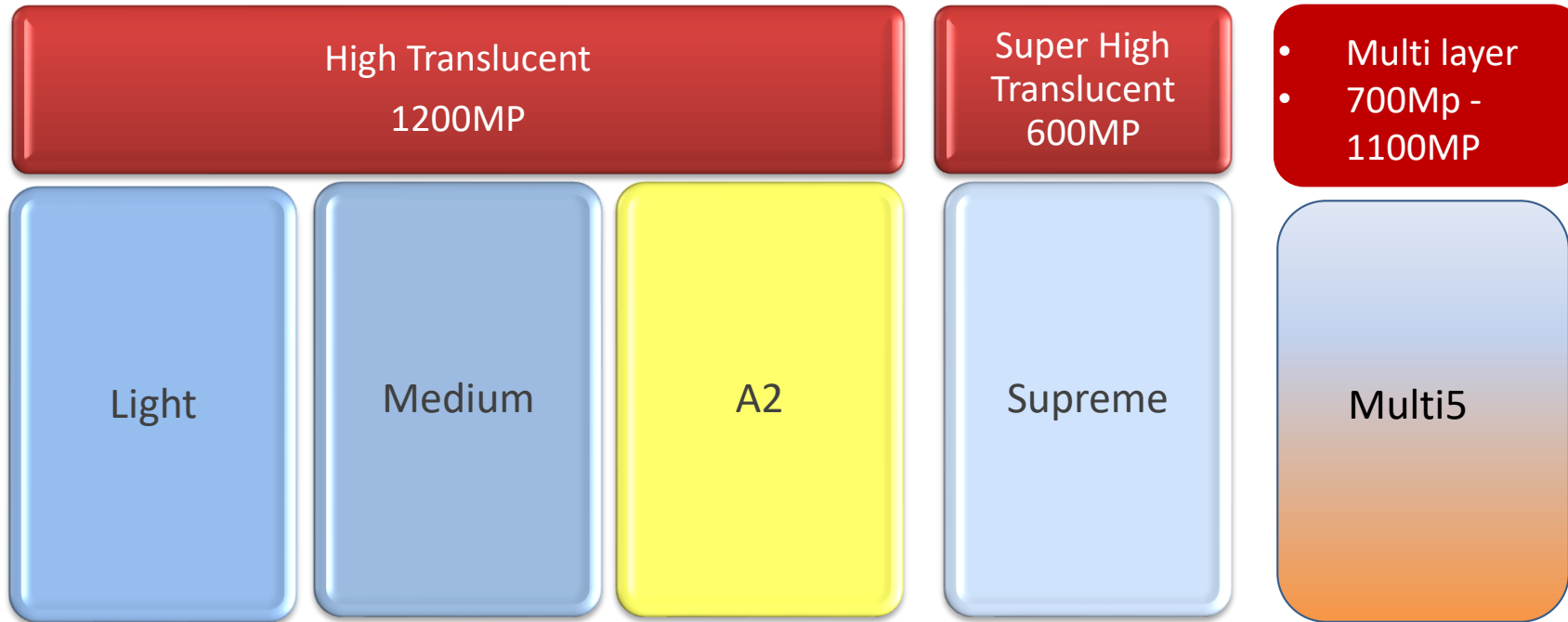


# Tanaka ZEP® Concept: Material Chart

## Tanaka Enamel ZR



# Tanaka Enamel ZR Light(1200 Mp Tetragonal Zirconia) Monolithic Zirconia Crowns



CONCEPT BY *Ashari Tanaka*

ZIRCONIA  
SOLUTIONS

Z·EP™

[www.tanaka.de](http://www.tanaka.de)

  
**Tanaka**  
DENTAL

 **ORGANDENTAL**  
TECHNOLOGY

# Tanaka Enamel ZR Supreme (700 Mp Tetragonal, Cubic Zirconia) Monolithic Zirconia Crowns



CONCEPT BY *Asami Tanaka*

ZIRCONIA  
SOLUTIONS

Z·EP™

[www.tanaka.de](http://www.tanaka.de)

  
**Tanaka**  
DENTAL

 **ORGANDENTAL**  
TECHNOLOGY

# Tanaka Enamel ZR Multi 5 (700 Mp - 1100 Mp Multi layered Zirconia) Monolithic zirconia crowns



CONCEPT BY *Asami Tanaka*

ZIRCONIA SOLUTIONS

Z·EP™

[www.tanaka.de](http://www.tanaka.de)



# TANAKA ENAMEL•ZR™ Multi 5



## 5 colors and 2 Translucent layers

Transparente Enamel

Natural body shades are at middle and Cervical aspect

It is easy to fabricate monolithic zirconia crowns and Bridges with or without porcelain layering.

## 1100 MPa

It is suitable for longspan Bridge work

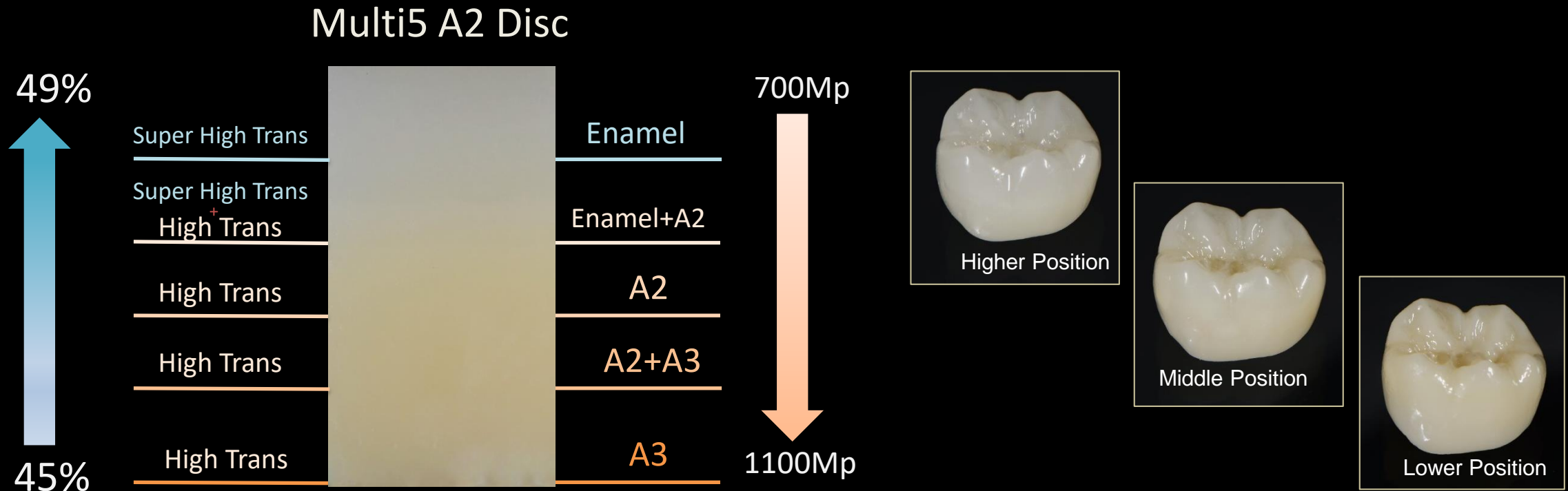
## Drei Farben und drei Schichtstärken

There are A1,A2 und A3 shade and 14, 16 und 18 mm thickness

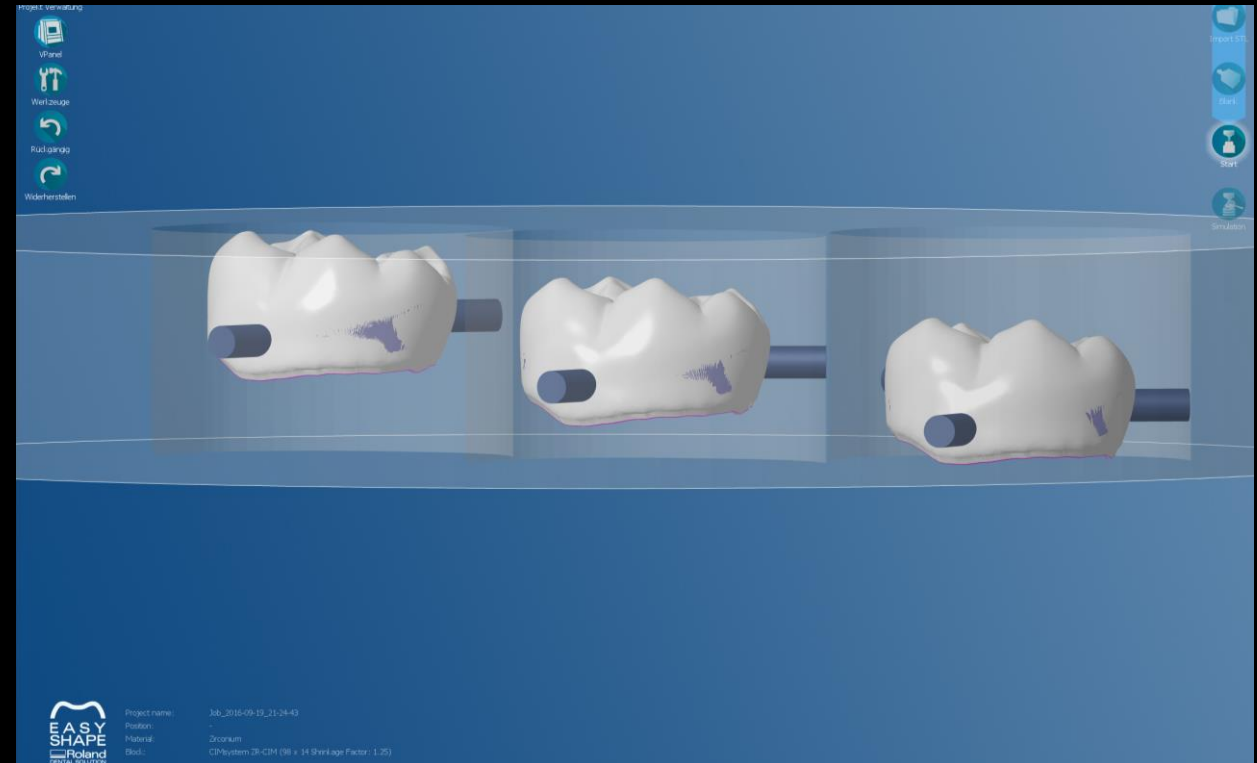
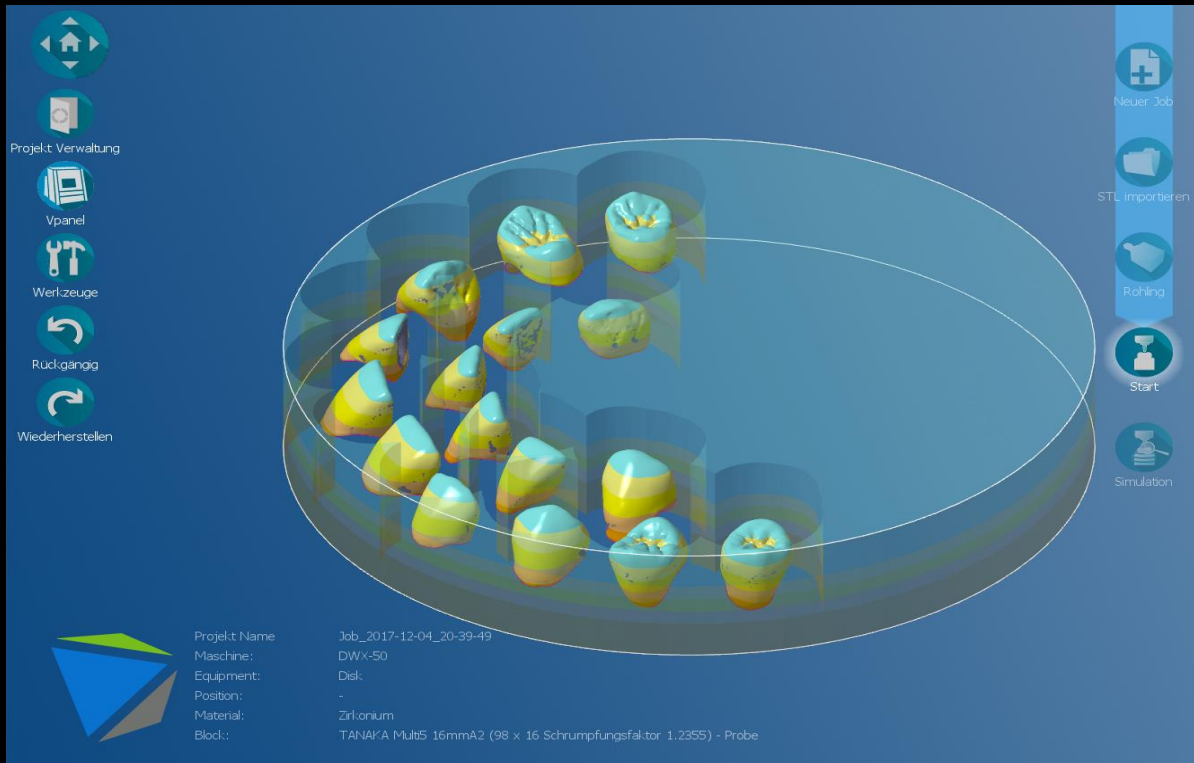
## Pre-sinter coloring is possible

with Tanaka ZirColor™ and new dipping liquid Sift

# Color and stability are different depends on nesting position



# Relationship between nesting position and crown's shade



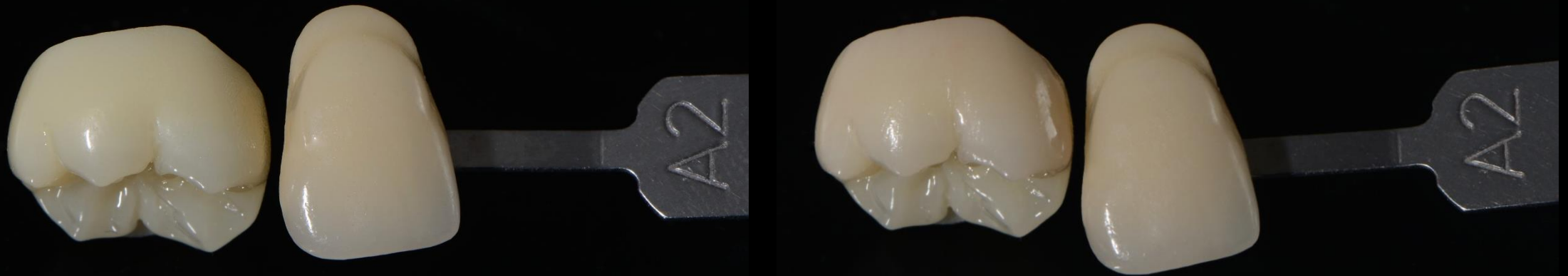
# 4 units bridge with Enamel Zr. Multi5





# Touch up with Pink and Orange stains

Generally color of zirconia is little bitte yellowish or greenish so that we can easilly modify the crown with pink and orange stains.



# ZirColor™ Shift

- Mill crowns from Multi5 A2 disc and dip the crown into your disireble shade of ZirColor shift dipping color liquide. You can imidiately get your disireble shade.
- You don`t need to have many stocks for different shade and you don`t need to change disc for every different shade.
- Even if all crowns shade are different you can nest them together into a same A2 disc (but B1) and you just dipp them to your disireble shade.



# A Shade and B Shade after colored by Zircolor Shift



# C Shade and D Shade after colored by Zircolor Shift



CONCEPT BY *Asami Tanaka*

ZIRCONIA SOLUTIONS

**Z.EP™**

[www.tanaka.de](http://www.tanaka.de)

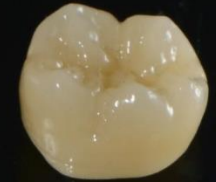
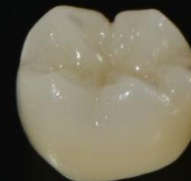


# Individuelle pre-sinter infiltration coloring of Multi5 with Tanaka Zir Color



Nesting position

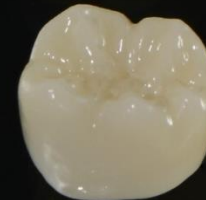
H



M



U



A1x1

A1x2

A2x1

A3x1

# Different pre-sinter coloring technique of Multi5 A2

Every crowns were milled from A2 Multi5 disc. We can individualize every crown with pre-sinter coloring

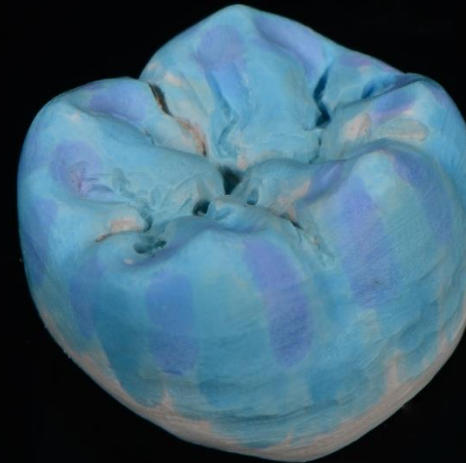
A3



B2



C3



D2



# Right after sintered

A3



B2



C3



D2

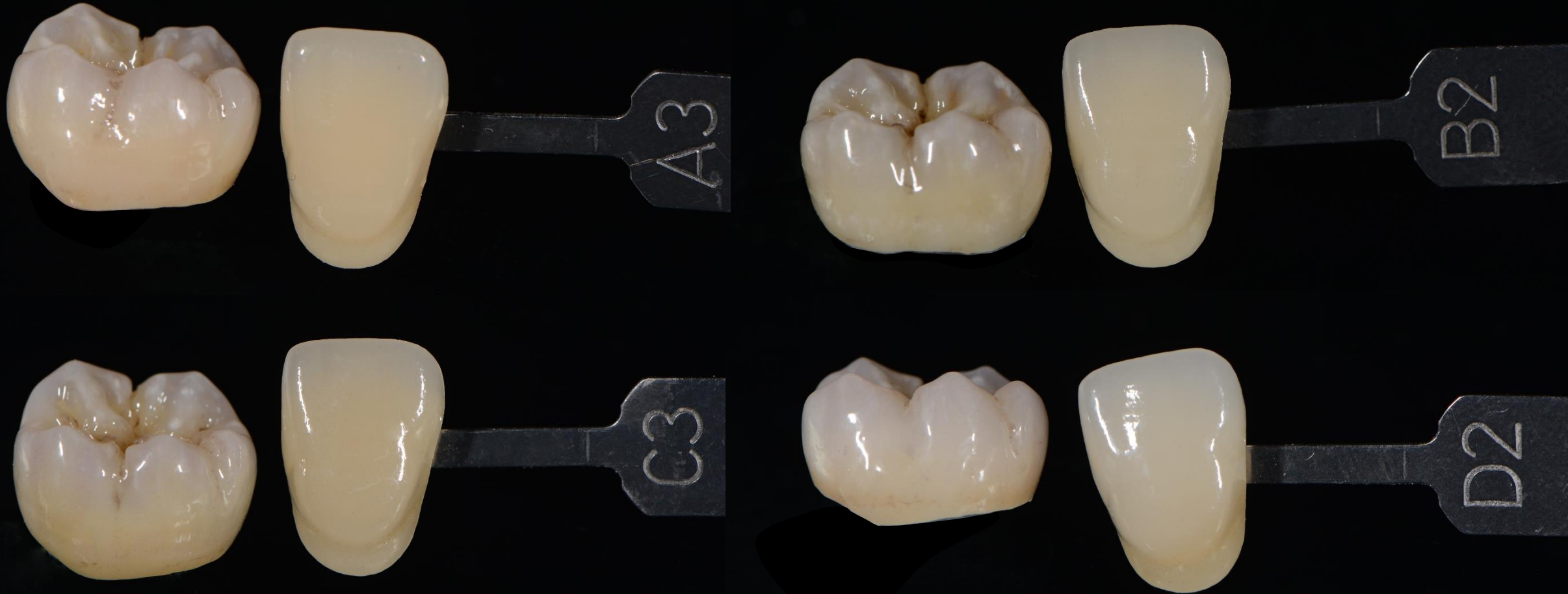


# After glazing





# Shasde matching with shade Tabs



# 16 Multi 5 monolithic zirconia crown



# Prisinter coloring with ZirColor Anteriors



# Polishing with Tanaka Soft Diamand



# Glazing with Tanaka Z-Luster (Glazing Spray with Fluorescence)



# Characterising of Enamel Zr. Multi5 with stain



# Enamel Zr. Multi5 monolithic Zirconia Bridge with Gingival



# Enamel Zr. Multi5 monolithic Zirkonia Bridge with Gingival



CONCEPT BY *Alexis Tanaka*

ZIRCONIA  
SOLUTIONS

Z·EP™

[www.tanaka.de](http://www.tanaka.de)

  
**Tanaka**  
DENTAL

 **ORGANDENTAL  
TECHNOLOGY**



# Z-Luster with UV Radiation

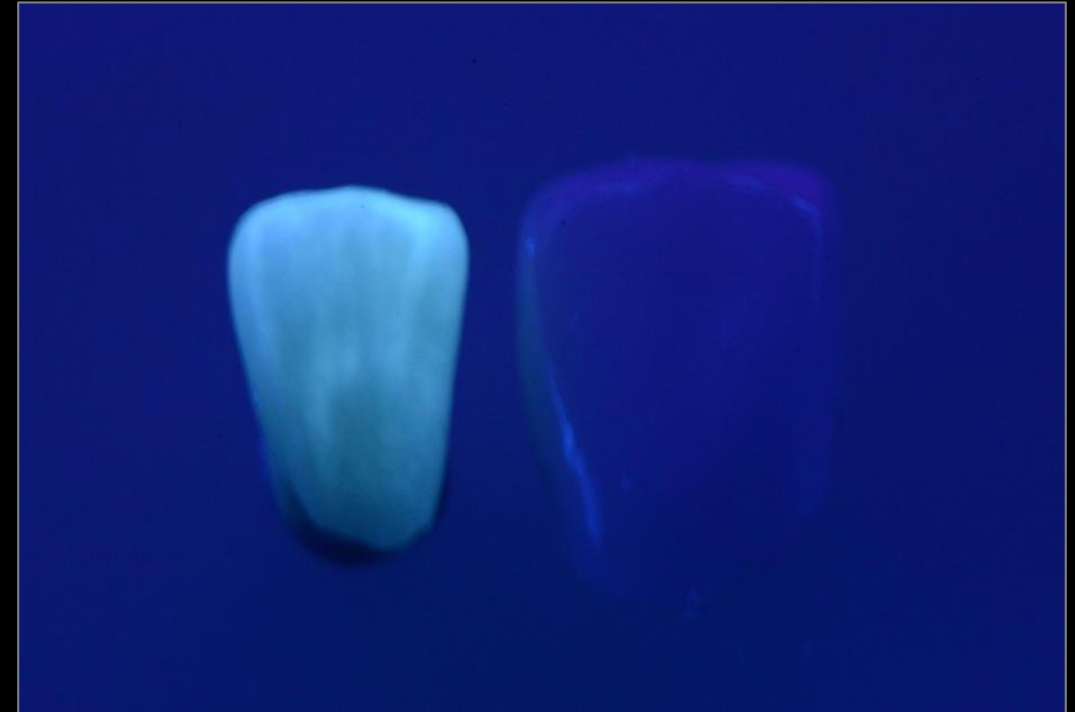
Natural teeth have much fluorescence but zirconia



Tanaka Z-Luster can easily give fluorescence to zirconia



The Left crown finished with Z-Luster, the right crown without Z-Luster



The left crown finished with other glazing material, the right crown finished with Z-luster



# How can we fabricate a fluorescenced Zirconia abutment?

Just spray the Tanaka Z-Luster



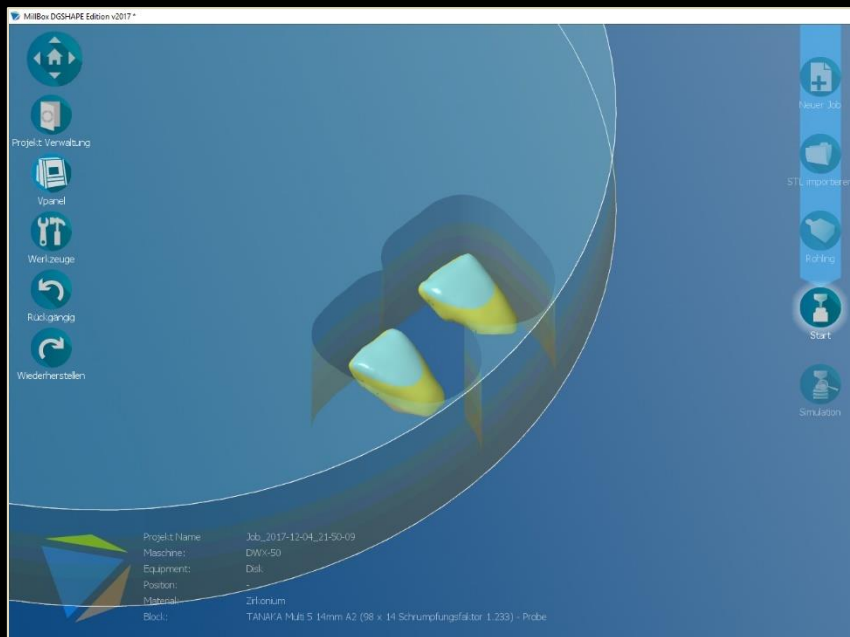
to zirconia abutment and just bake it!



# Tanaka Multi5 Monolithic zirconia veneers case

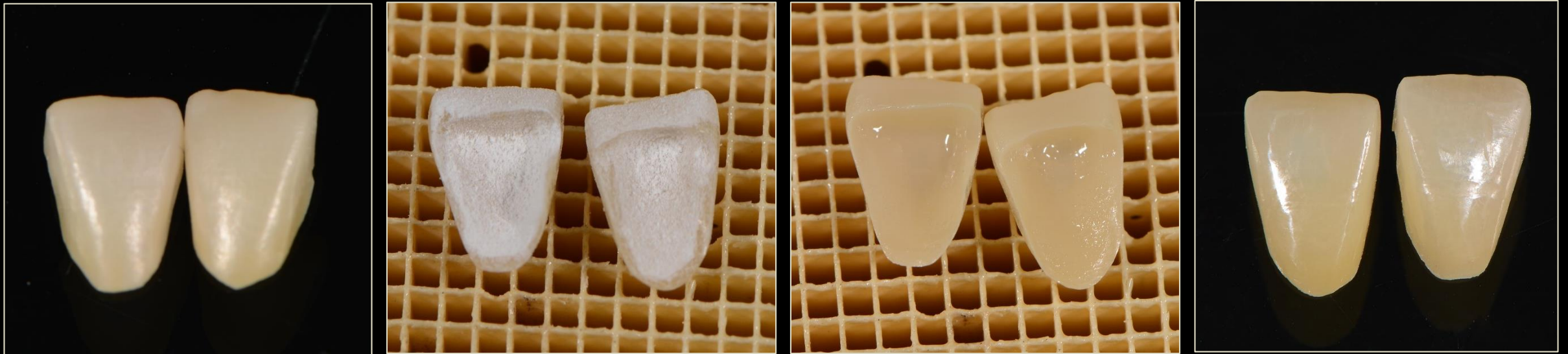


# Nesting position is very important for multi layered disc



# Tanaka Multi5 Monolithic zirconia veneers

Zirconia can't be etched but when the internal surface of zirconia crown is finished with Tanaka Z-Luster, the surface can be etched



# Tanaka multi5 monolithic zirconia veneers





# Tanaka Multi5 full mouth reconstruction case



# Pre-sinter infiltration coloring with Tanaka ZirColor

We can shift the yellowish shade to orange shade with Pink



# Monolithic zirconia crowns with Enamel Zr. Multi5 occlusal aspect



# Monolithic zirconia crowns with Enamel Zr. Multi5 mandibular



Right after cemented in the mouth



CONCEPT BY *Aislinn Tanaka*

ZIRCONIA  
SOLUTIONS

Z•EP™

[www.tanaka.de](http://www.tanaka.de)

  
**Tanaka**  
DENTAL

 **ORGANDENTAL  
TECHNOLOGY**

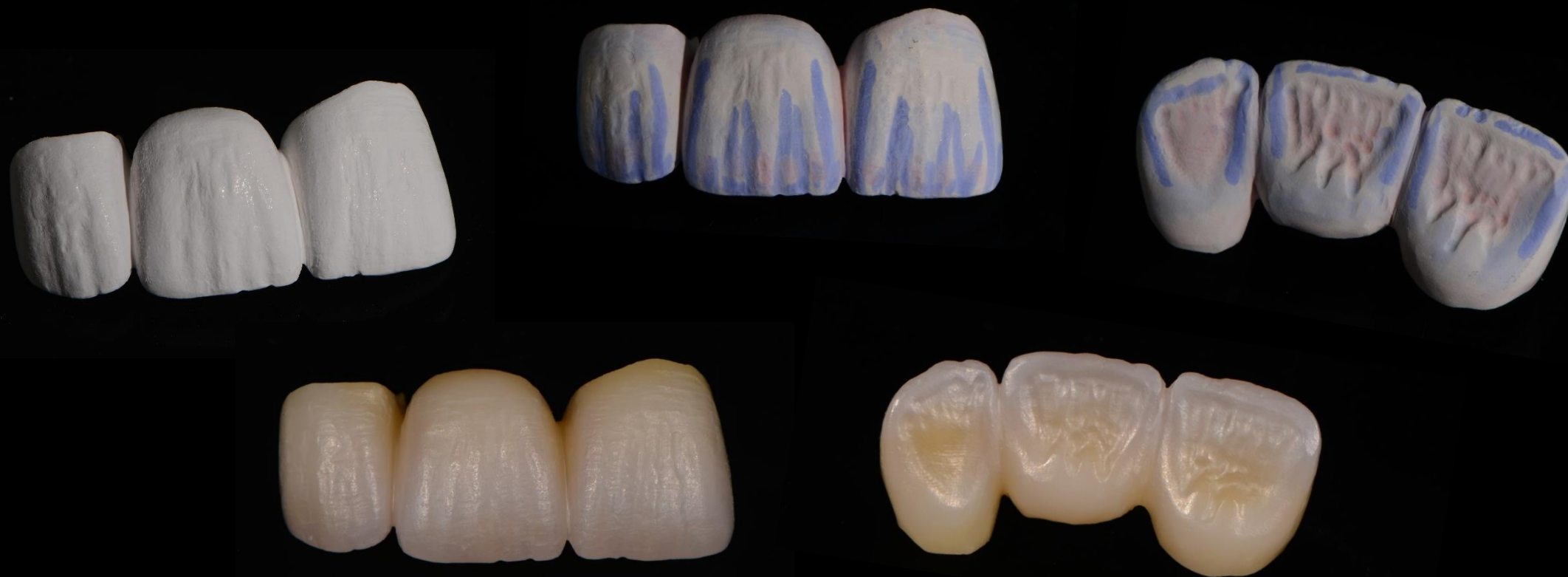
# Monolithic zirconia crowns with Enamel Zr. Multi5 occlusal aspect



# 12-21 Tanaka Multi5 monolithic zirconia bridge case



# Pre-sinter infiltration coloring with Tanaka ZirColor





# After glazing



# Final result in the mouth



# New smile with full zirconia bridge



CONCEPT BY *Asami Tanaka*

ZIRCONIA  
SOLUTIONS

Z•EP™

[www.tanaka.de](http://www.tanaka.de)

  
**Tanaka**  
DENTAL

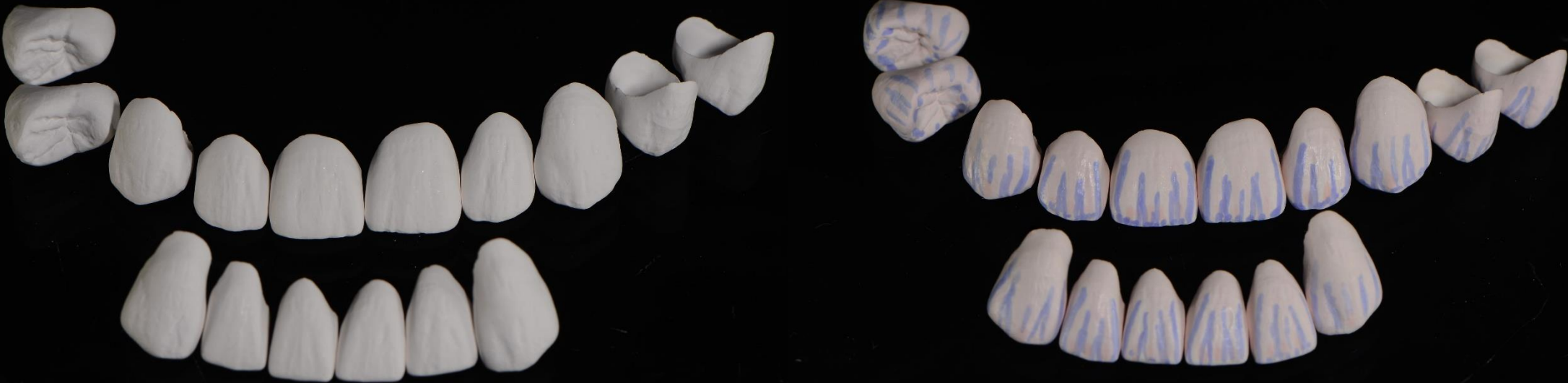
 **ORGANDENTAL**  
TECHNOLOGY LABORATORY

# Tanaka MuLthi5 Monolithic zirconia veneer crowns case

Provisional Restrations



# Tanaka MuLthi5 Monolithic zirconia veneer crowns



CONCEPT BY *Asami Tanaka*

ZIRCONIA SOLUTIONS

Z·EP™

[www.tanaka.de](http://www.tanaka.de)



# Tanaka MuLthi5 Monolithic zirconia veneer crowns case



# Tanaka MuLthi5 Monolithic zirconia veneer crowns case



# Tanaka MuLthi5 Monolithic zirconia veneer crowns case





# Tanaka MuLthi5 Monolithic zirconia veneer crowns case



CONCEPT BY *Asami Tanaka*

ZIRCONIA SOLUTIONS

**Z·EP™**

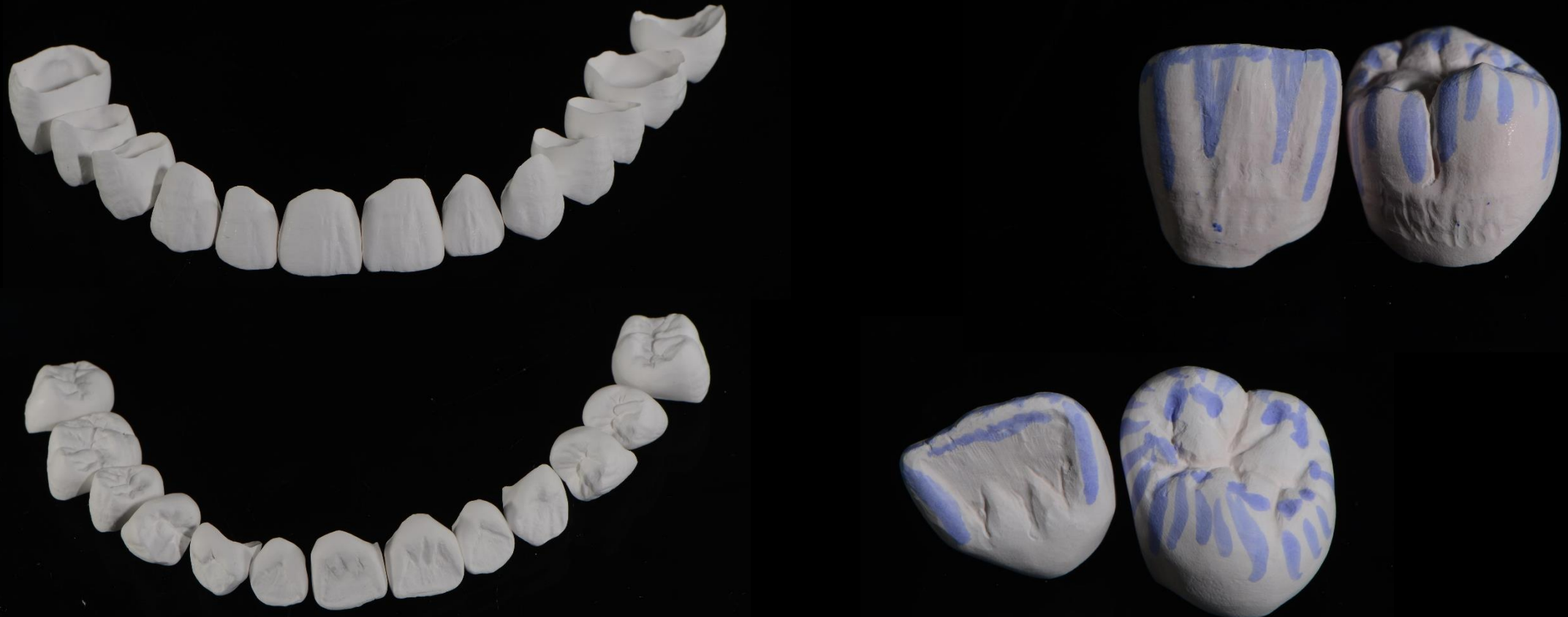
[www.tanaka.de](http://www.tanaka.de)



# Full Maxiler reconstruction with Tanaka Multi5 monolithic zirconia crowns



# Pre-sinter colored Tanaka Multi5 A1 monolithic zirconia crowns



# Full Maxiler reconstruction with Tanaka Multi5 monolithic zirconia crowns



# Full Maxiler recostruction with Tanaka Multi5 monolithic zirconia crowns



# Full Maxiler reconstruction with Tanaka Multi5 monolithic zirconia crowns



# Full Maxiler reconstruction with Tanaka Multi5 monolithic zirconia crowns



CONCEPT BY *Asami Tanaka*

ZIRCONIA  
SOLUTIONS

Z•EP™

[www.tanaka.de](http://www.tanaka.de)

  
**Tanaka**  
DENTAL

 **ORGANDENTAL  
TECHNOLOGY**

# Full Maxiler reconstruction with Tanaka Multi5 monolithic zirconia crowns





We need to apply just thin layer porcelain on Laval side because of high quality corping



*Zirconia Enamel Porcelain*

# Inicial situation



# Lavial thin layer porcelain layering with Tanaka Multi5



CONCEPT BY *Ashraf Tanaka*

ZIRCONIA  
SOLUTIONS

Z•EP™

[www.tanaka.de](http://www.tanaka.de)

  
**Tanaka**  
DENTAL

 **ORGADENTAL**  
TECHNOLOGY

# 21 Z.EP crowns



# 21 Z.EP crowns



CONCEPT BY *Asami Tanaka*

ZIRCONIA  
SOLUTIONS

**Z.EP**<sup>TM</sup>

[www.tanaka.de](http://www.tanaka.de)

  
**Tanaka**  
DENTAL

 **ORGANDENTAL**  
TECHNOLOGY HERFORD, GERMANY

# Inicial Situation



# Z.EP corpping with Tanaka Multi 5



CONCEPT BY *Asami Tanaka*

ZIRCONIA  
SOLUTIONS

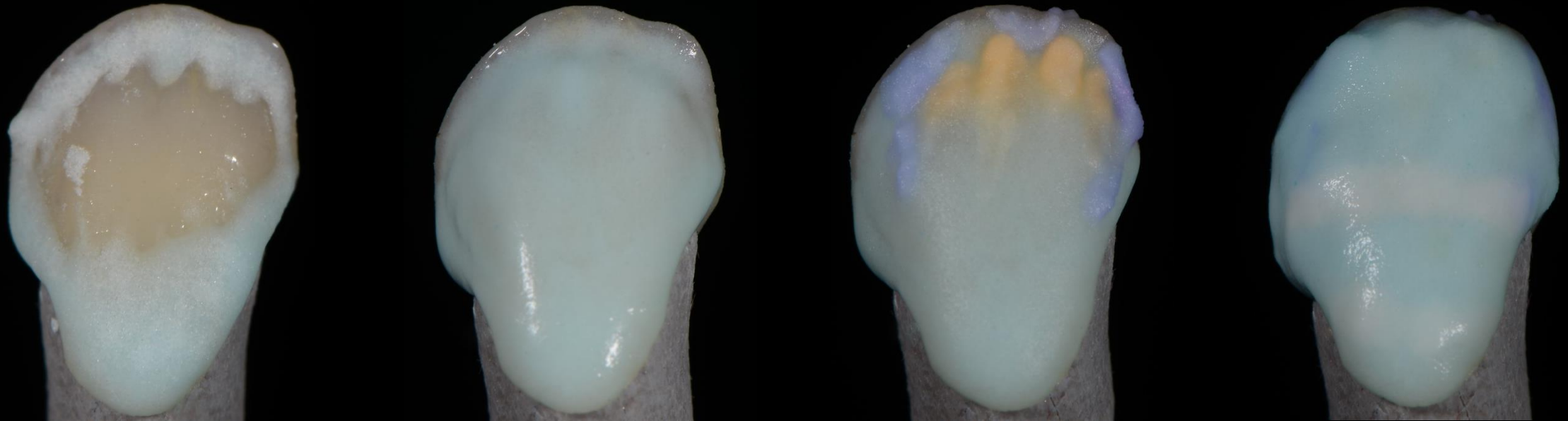
**Z·EP™**

[www.tanaka.de](http://www.tanaka.de)

  
**Tanaka**  
DENTAL

 **ORGADENTAL  
TECHNOLOGY**

# No Dentin and Body porcelain



CONCEPT BY *Asami Tanaka*

ZIRCONIA  
SOLUTIONS

Z·EP™

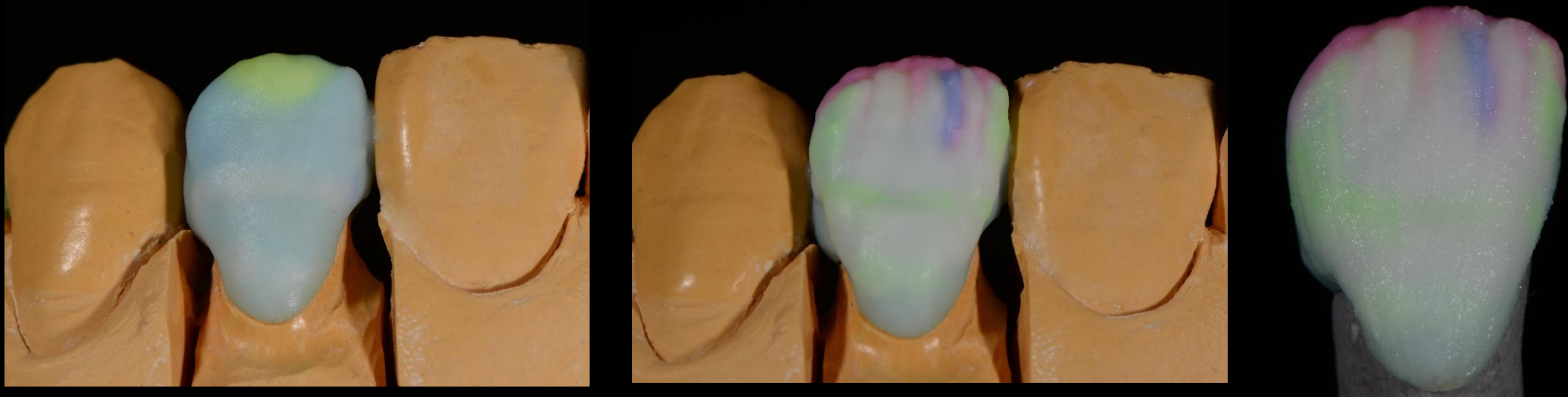
[www.tanaka.de](http://www.tanaka.de)

  
**Tanaka**  
DENTAL

 **ORGANDENTAL**  
TECHNOLOGY



Just thin layer Enamel, Trans and some effective porcelain layering



CONCEPT BY *Asami Tanaka*

ZIRCONIA  
SOLUTIONS

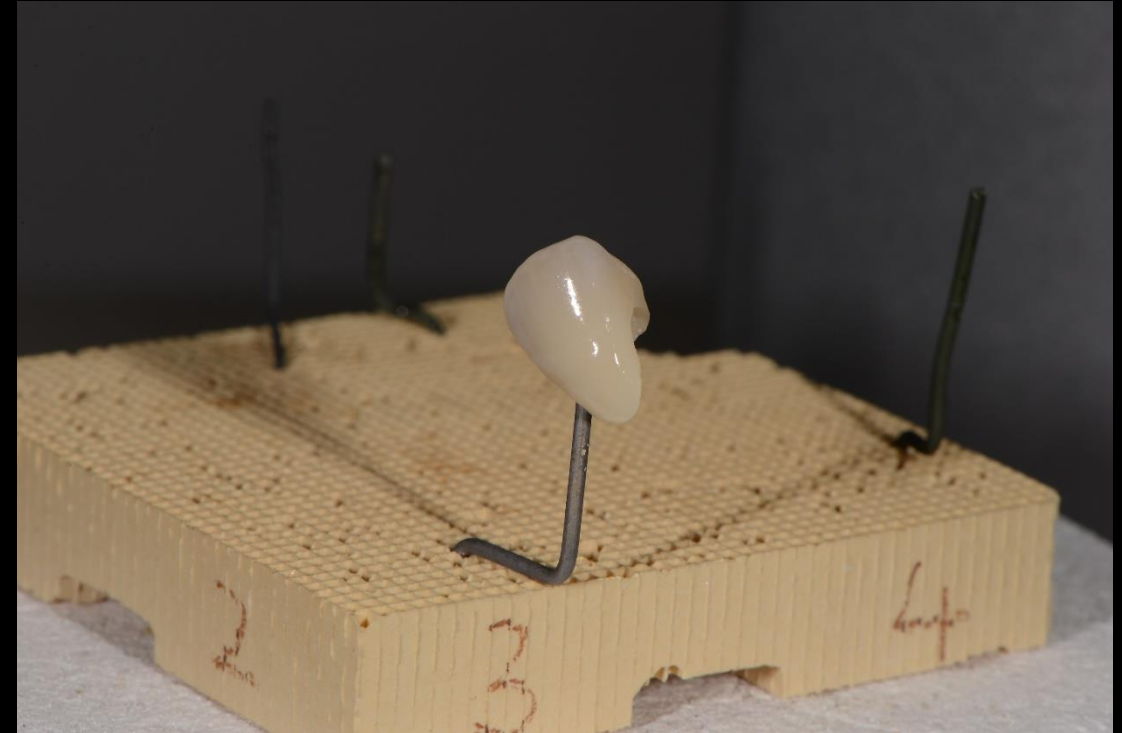
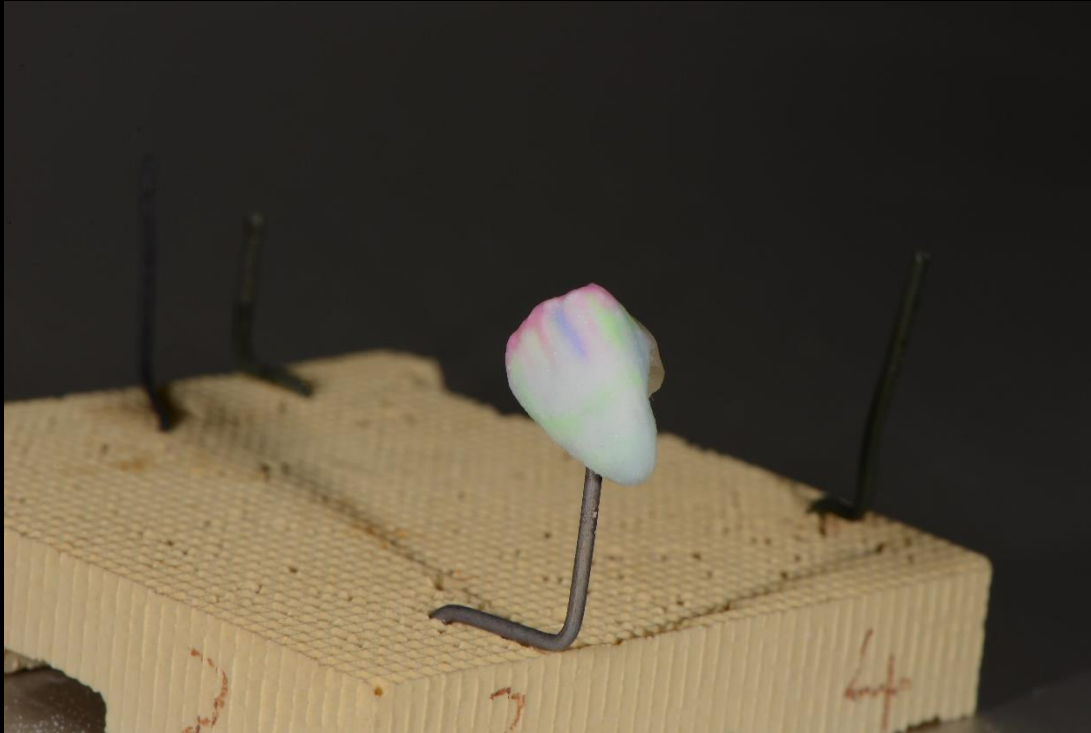
Z·EP™

[www.tanaka.de](http://www.tanaka.de)

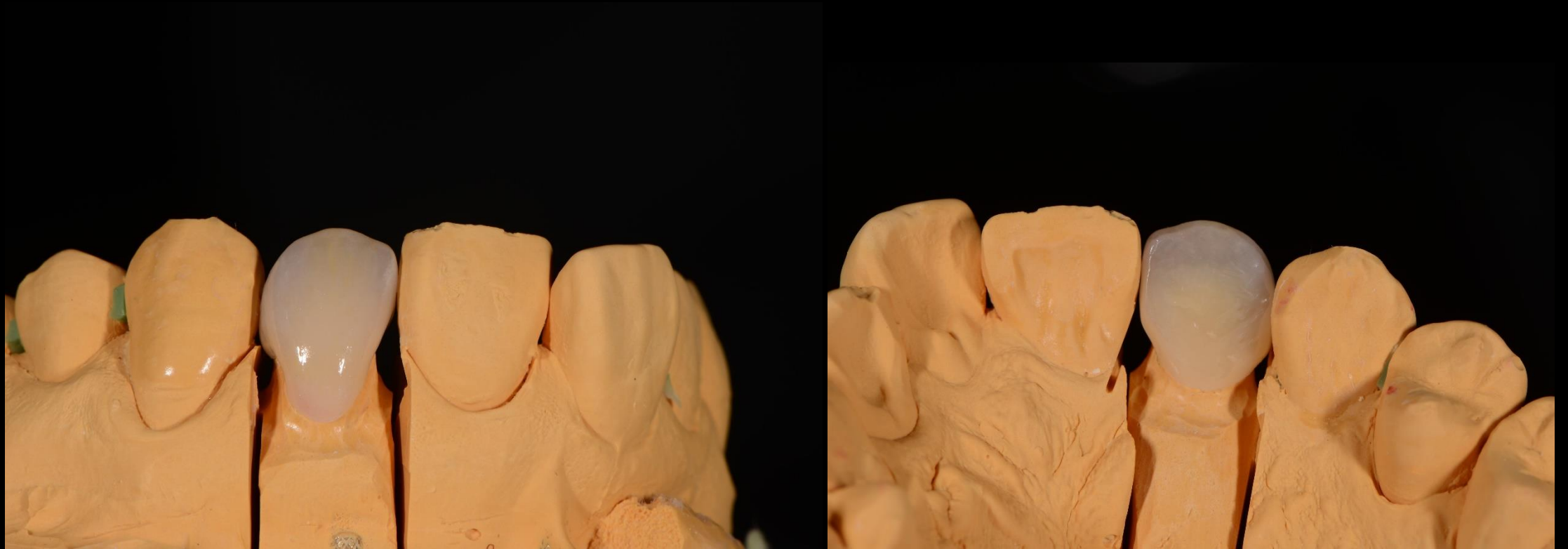
  
**Tanaka**  
DENTAL

 **ORGANDENTAL  
TECHNOLOGY**

# Tanaka One Bake Technique



# Final restoration with Noritake CZR



# 22 Z.EP Crown



CONCEPT BY *Ashraf Tanaka*

ZIRCONIA  
SOLUTIONS

**Z.EP™**

[www.tanaka.de](http://www.tanaka.de)

  
**Tanaka**  
DENTAL

 **ORGANDENTAL**  
TECHNOLOGY HEINRICH  
GÖTTSCHEW

# Internal stain technique and One bake Technique with Noritake CZR



CONCEPT BY *Asami Tanaka*

ZIRCONIA  
SOLUTIONS

Z•EP™

[www.tanaka.de](http://www.tanaka.de)

  
**Tanaka**  
DENTAL

 **ORGANDENTAL**  
TECHNOLOGY

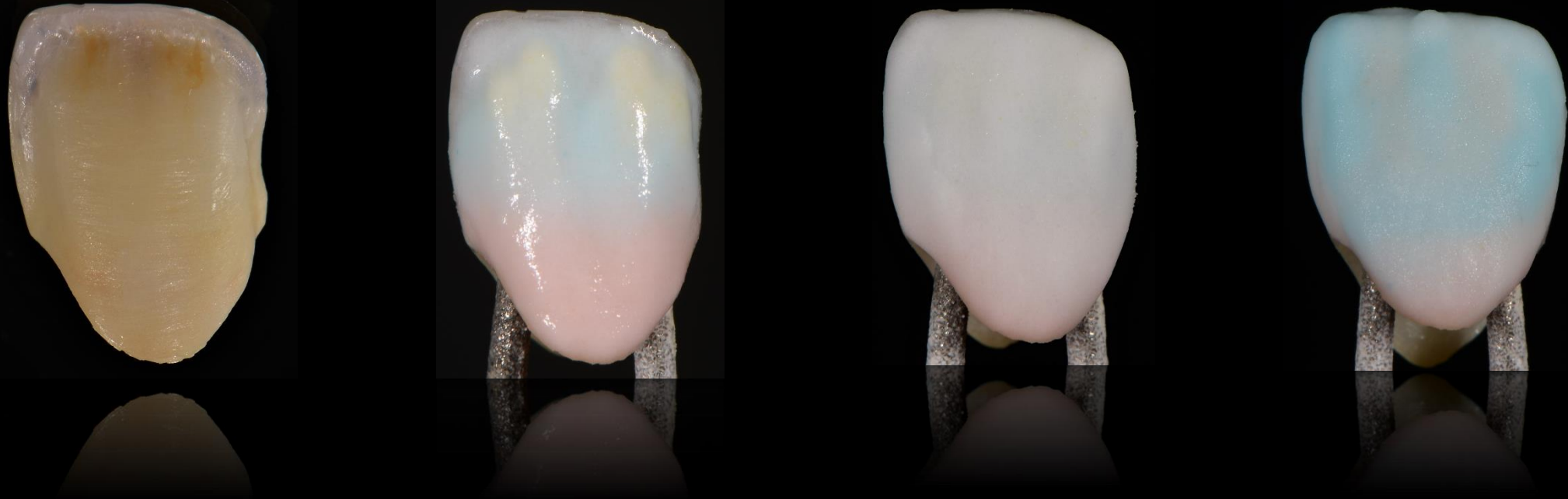
# Inicial Situation



# Pre-sinter infiltration coloring technique and masking technique



# Z.EP porcelain layering with Tanaka One Bake Technique



CONCEPT BY *Ashari Tanaka*

ZIRCONIA  
SOLUTIONS

Z.EP™

[www.tanaka.de](http://www.tanaka.de)

  
**Tanaka**  
DENTAL

 **ORGANDENTAL**  
TECHNOLOGY HERFORD, GERMANY



# After cementation



# Advanced Zirconia Restorations: Monolithic Esthetics & Z.EP™ Course 2018



*RDT Akito Kani*

Jun 29th,30th in Hamburg

Sep 21st,22nd in Hamburg

Nov 23rd,24th in Hamburg

Contact & Details: [www.tanaka.de](http://www.tanaka.de) [service@tanaka.de](mailto:service@tanaka.de)