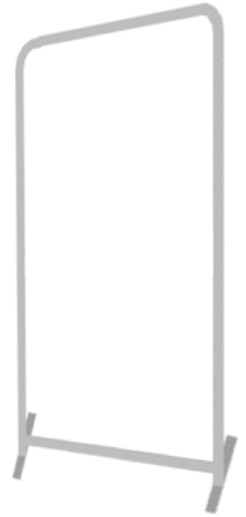


2 ft Tension Fabric Table Top

Product Parts

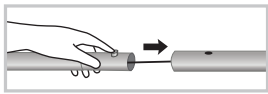
- 1 - 2-pc Shock-Corded Sides (x2)
- 2 - Top Corners (x2)
- 3 - Bottom Corners (x2)
- 4 - Top Center
- 5 - Bottom Center
- 6 - Connector
- 7 - Feet (2)
- 8 - Fabric Graphic



Display Set-Up

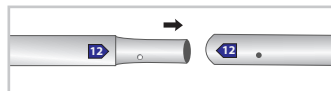
Step 1

Align the two sections of each shock-corded side pole (1) and click them into place with the snap buttons.



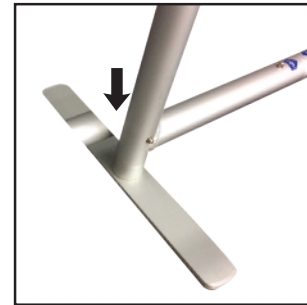
Step 2

Continue combining poles (Parts 1-5) until the frame is complete, by matching corresponding numbers on the blue arrows.



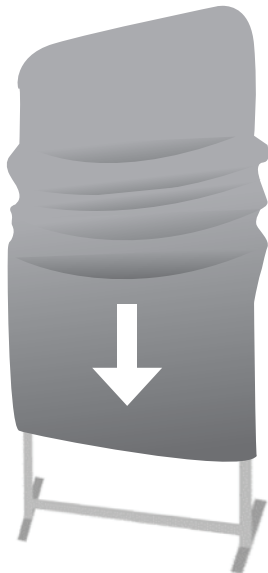
Step 3

Attach the feet (7) to the bottom of the Bottom Corner pieces (3).



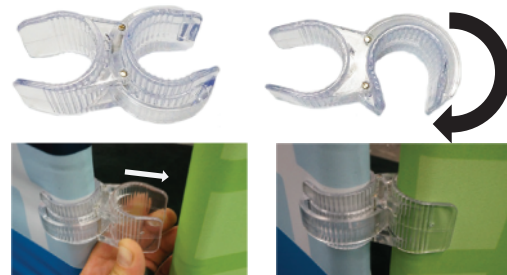
Step 4

Set the frame upright and drape the fabric graphic (8) over it, pulling down evenly.



Step 5 (optional)

Apply Connectors (6) to combine multiple kits for your display.



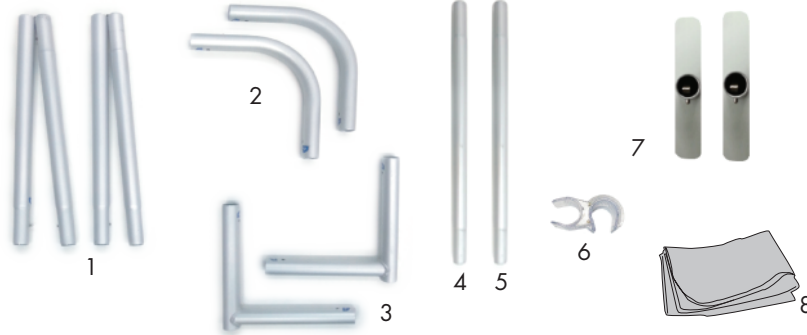
Storage & Care

Use a damp cloth to clean the hardware.
Machine wash the fabric graphic cold on gentle cycle. Tumble dry on no heat.
Steam clean for wrinkles and never dry-clean.

3 ft Tension Fabric Table Top

Product Parts

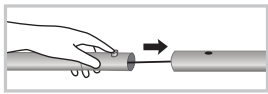
- 1 - 2-pc Shock-Corded Sides (x2)
- 2 - Top Corners (x2)
- 3 - Bottom Corners (x2)
- 4 - Top Center
- 5 - Bottom Center
- 6 - Connector
- 7 - Feet (2)
- 8 - Fabric Graphic



Display Set-Up

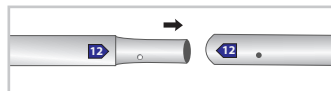
Step 1

Align the two sections of each shock-corded side pole (1) and click them into place with the snap buttons.



Step 2

Continue combining poles (Parts 1-5) until the frame is complete, by matching corresponding numbers on the blue arrows.



Step 3

Attach the feet (7) to the bottom of the Bottom Corner pieces (3).



Step 4

Set the frame upright and drape the fabric graphic (8) over it, pulling down evenly.



Step 5 (optional)

Apply Connectors (6) to combine multiple kits for your display.



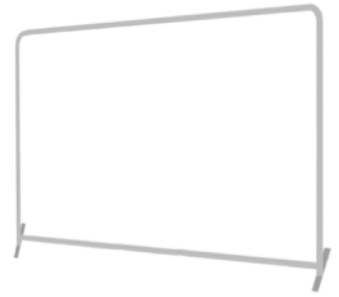
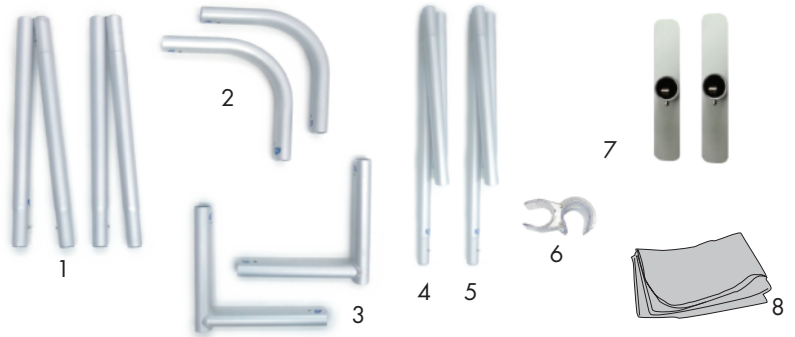
Storage & Care

Use a damp cloth to clean the hardware.
Machine wash the fabric graphic cold on gentle cycle. Tumble dry on no heat.
Steam clean for wrinkles and never dry-clean.

6 ft Tension Fabric Table Top

Product Parts

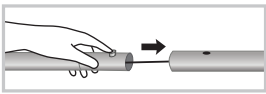
- 1 - 2-pc Shock-Corded Sides (x2)
- 2 - Top Corners (x2)
- 3 - Bottom Corners (x2)
- 4 - 2-pc Shock-Corded Top Center
- 5 - 2-pc Shock-Corded Bottom Center
- 6 - Connector
- 7 - Feet (2)
- 8 - Fabric Graphic



Display Set-Up

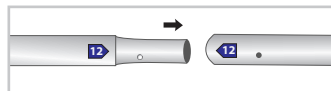
Step 1

Align the two sections of each shock-corded side pole (1) and click them into place with the snap buttons.



Step 2

Continue combining poles (Parts 1-5) until the frame is complete, by matching corresponding numbers on the blue arrows.



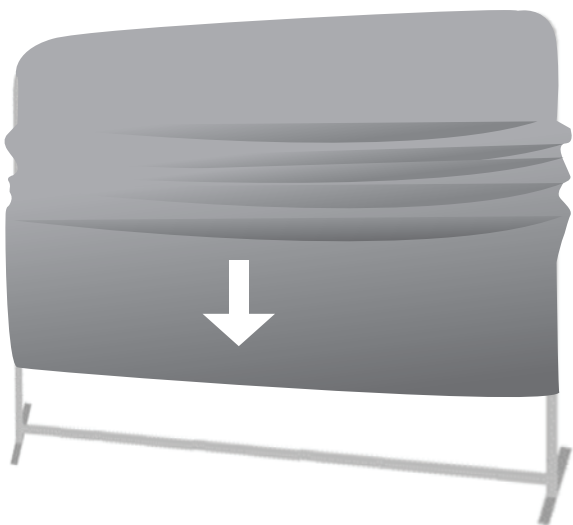
Step 3

Attach the feet (7) to the bottom of the Bottom Corner pieces (3).



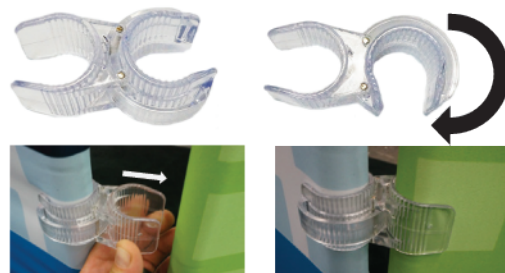
Step 4

Set the frame upright and drape the fabric graphic (8) over it, pulling down evenly.



Step 5 (optional)

Apply Connectors (6) to combine multiple kits for your display.



Storage & Care

Use a damp cloth to clean the hardware.
Machine wash the fabric graphic cold on gentle cycle. Tumble dry on no heat.
Steam clean for wrinkles and never dry-clean.