

SLF-1020-6



counter not included
in base price

features and benefits:

- Silver aluminum extrusion frame (1)
- SEG push-fit fabric graphics (1)
- six shelves for small product display; each shelf holds max 15lbs
- Shelf color options: Silver, Black, Mahogany, Natural

- Ships freight in a protective plastic freight case
- Foreground counter not included
- Lifetime hardware warranty against manufacturer defects

dimensions:

Hardware

Graphic

Assembled unit:
231.69" w x 95.45" h x 32.48" d
5882.64mm(w) x 2424.43mm(h) x 825mm(d)

Refer to related graphic template for more information.

Approximate weight:
274.58lbs / 124.55 kg

Shipping

additional information:

Packing case(s):
OCF2

Graphic material:
Dye-sublimation zipper pillowcase fabric
Dye-sublimation SEG push-fit fabric

Shipping dimensions:

OCF2:
51" l x 51" h x 24" d
1321mm(l) x 737mm(h) x 381mm(d)

Approximate total shipping weight:
345lbs / 156.5kg

3 person assembly recommended:



We are continually improving and modifying our product range and reserve the right to vary the specifications without prior notice. All dimensions and weights quoted are approximate and we accept no responsibility for variance. E&OE. See Graphic Templates for graphic bleed specifications.

Setup notes

1. Redesign of this exhibit without approval by manufacture may result in dangerous and unsafe structures. Manufacture disclaims any responsibility for redesigned exhibits it does not approve in writing.

2. Parts and components such as panels and extrusions are manufactured to metric sizing. Where ever possible sizes have been noted in feet and inches as well as in metric. Below is the imperial to metric sizing table as a reference. 'Nominal' refers to approximate sizes.

IMPERIAL TO METRIC SIZES

**8' Nominal = 94 1/2" or 2400mm Actual
4' Nominal = 47 1/4" or 1200mm Actual
3' Nominal = 35 7/16" or 900mm Actual
2' Nominal = 23 5/8" or 600mm Actual
1' Nominal = 11 13/16" or 300mm Actual**

Included In Your Kit

Tools, Components, & Connectors



HEX KEY SET x1



CB9 x8



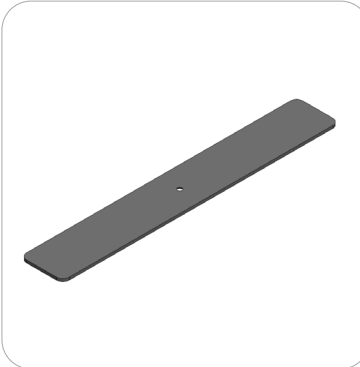
IB2 x10



PH2-300-TG x4



PM453-1200-A165x4



LN114-S2-650x4



PH1-1155-L-L1 x4



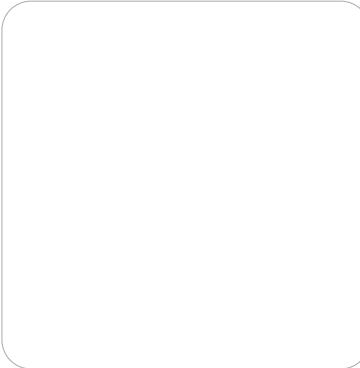
PM453-1200-A165-N-x4



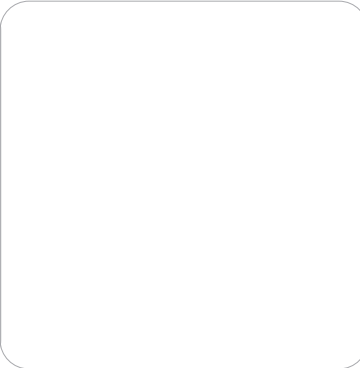
PHFC4-1200-L-MCB9-SIDE x8



PHFC4-1200-L-MCB9x8



CODE-x0



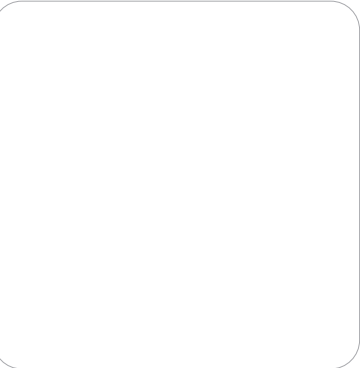
CODEx0



CODEx0



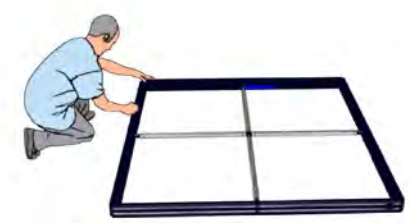
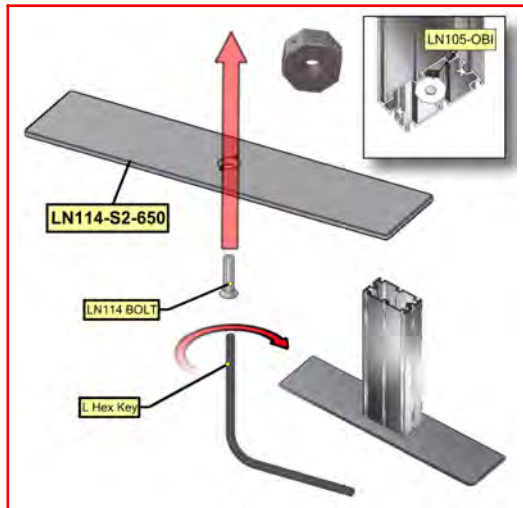
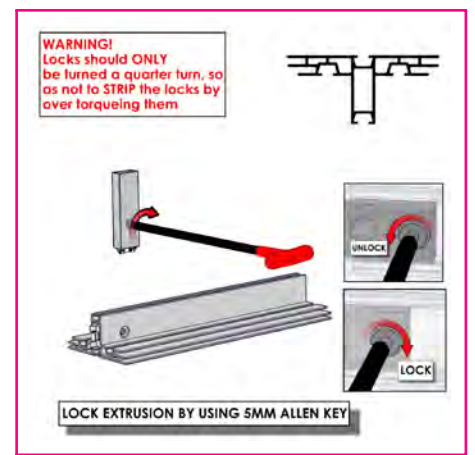
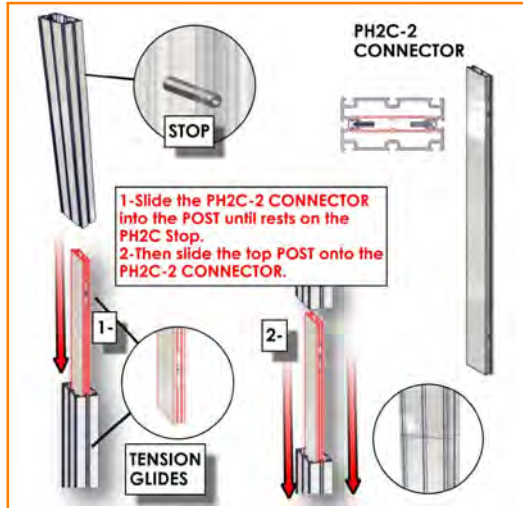
CODE x0



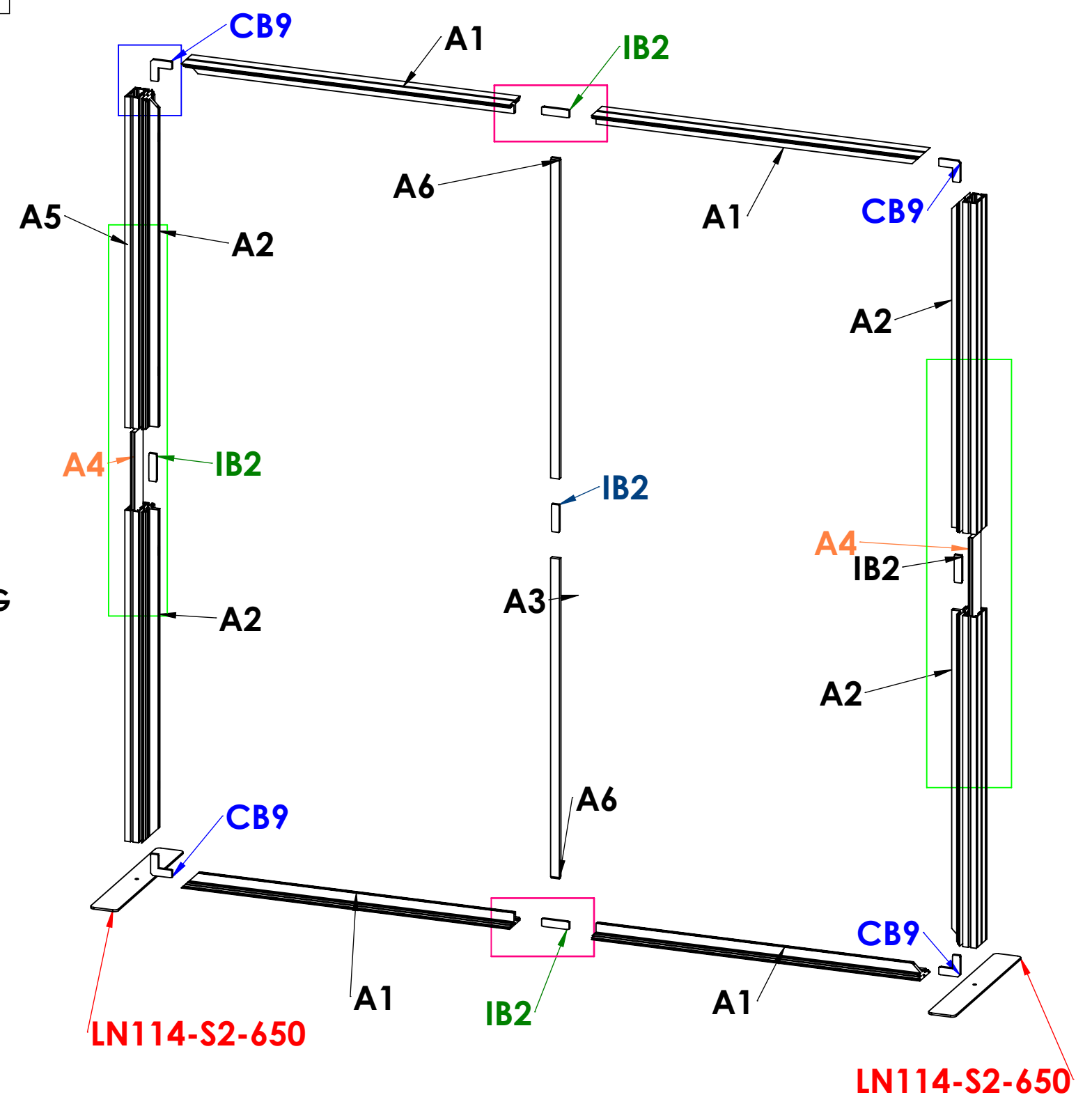
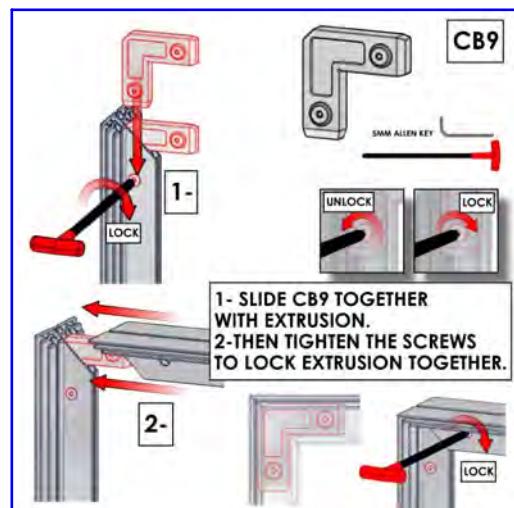
CODEx0

Code	#	Description
IB2	10	JOINER BAR(NEW DESIGN)
A1	8	PHFC4-1200 EXTRUSION-WITH IB2 LOCK HOLE-WITH MITRE CUT FOR CB9
A2	8	PHFC4-1200 EXTRUSION-WITH IB2 LOCK HOLE-WITH MITRE CUT FOR CB9-SIDE
CB9	8	90 DEGREE JOINER
A5	4	1200MM PM4S3-1200 EXTRUSION-WITH STOP AT 165MM
A4	4	300MM PH2-TG EXTRUSION
A3	4	1200MM PM4S3-1200 EXTRUSION-WITH STOP AT 165MM-WITH NUT INSERT
A6	4	1155MM PH1 EXTRUSION-WITH IB2 LOCK HOLE-CAM LOCK
LN114-S2-650	4	FOOT PLATE , 650MM LENGTH

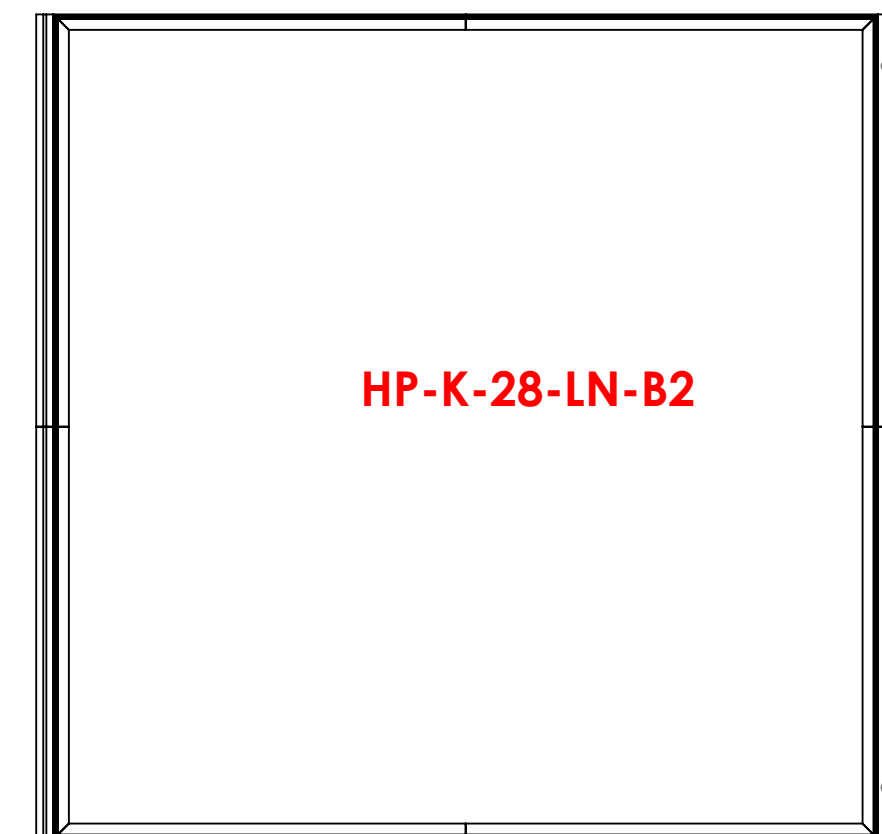
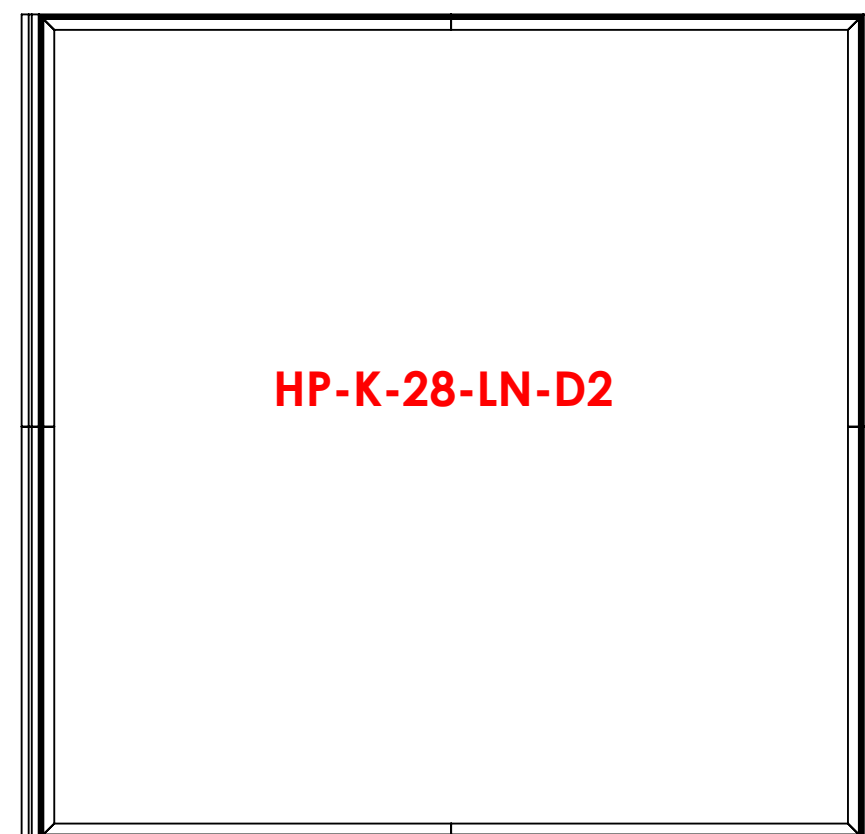
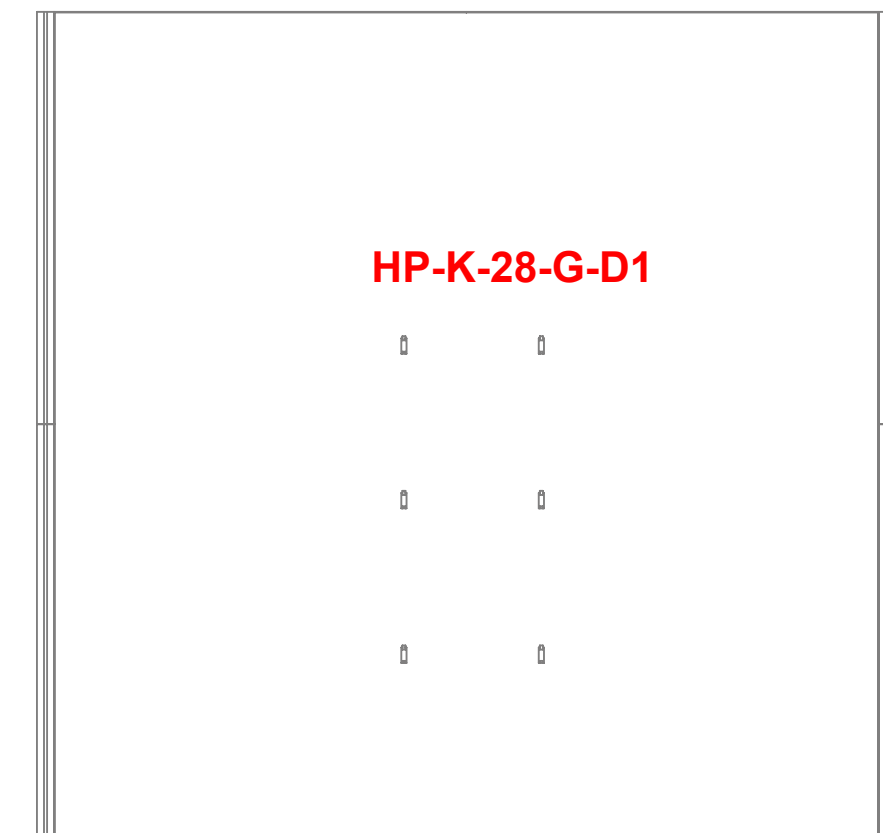
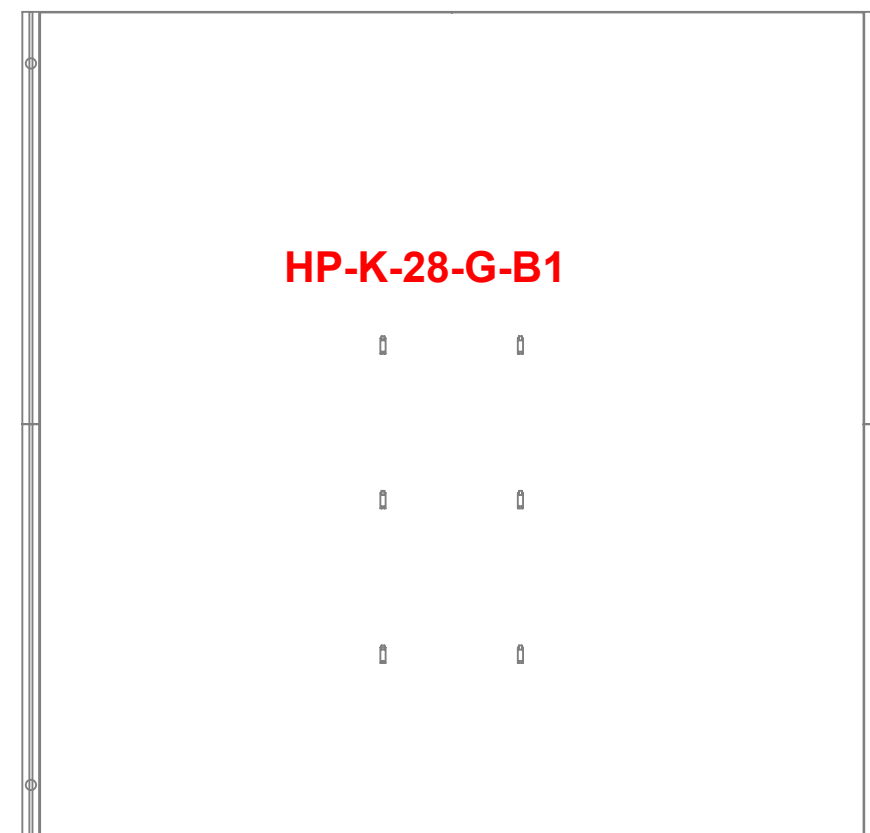
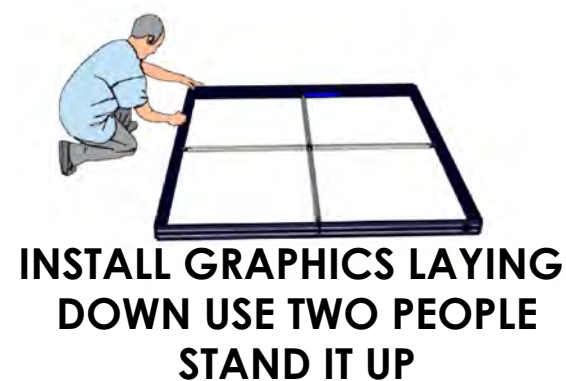
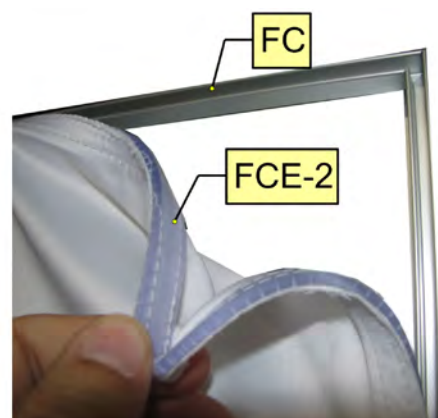
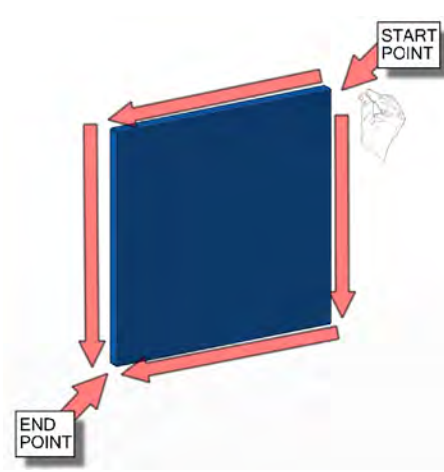
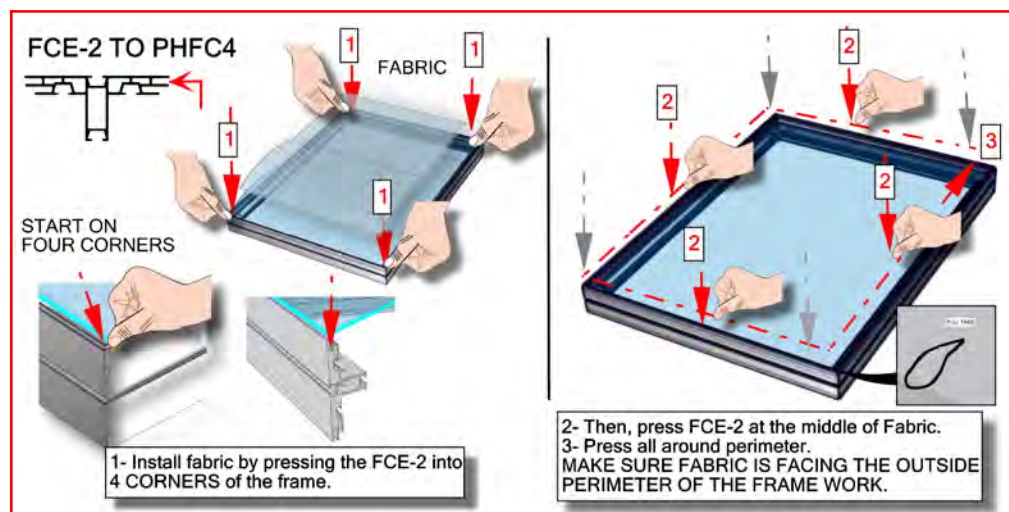
VECTOR FRAME X 2



ASSEMBLE FRAMES LAYING DOWN STAND UP AFTER ATTECHING GRAPHICS



Code	#	Description
HP-K-28-G-D1	1	GRAPHIC(D1) 94.37 w X 94.37 h finished size Dye-sub print on 8oz. Power Stretch, with FCE-2 silicone beading sewn to back perimeter, corner pull sewn in bottom right corner
HP-K-28-LN-D2	1	LINER(D2) 94.37 w X 94.37 h finished size Opaque liner, with FCE-2 silicone beading sewn to back perimeter, corner pull sewn in bottom right corner
HP-K-28-LN-B2	1	LINER(B2) 94.37 w X 94.37 h finished size Opaque liner, with FCE-2 silicone beading sewn to back perimeter, corner pull sewn in bottom right corner
HP-K-28-G-B1	1	GRAPHIC(B1) 94.37 w X 94.37 h finished size Dye-sub print on 8oz. Power Stretch, with FCE-2 silicone beading sewn to back perimeter, corner pull sewn in bottom right corner



Included In Your Freestanding Shelf

Tools, Components, Connectors & Extrusions



5MM ALLEN-T x1



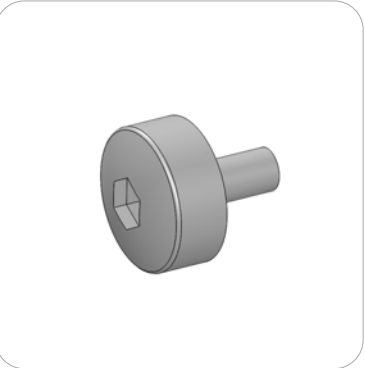
PM4S3-MM-FOOT-L x1



PM4S3-MM-FOOT-R x1



LN100 x6



M5 THUMBSCREW x8



PH2-350-L-L x3



PM4S3-600-A165-A165 x2



PM4S3-1200-A165-A165 x2



PH2-300-TG x2



PH-400-L-SIDE-MK x6



PE-1200 x6
*will ship preattached to shelf



CT21-MK-SHELF x3

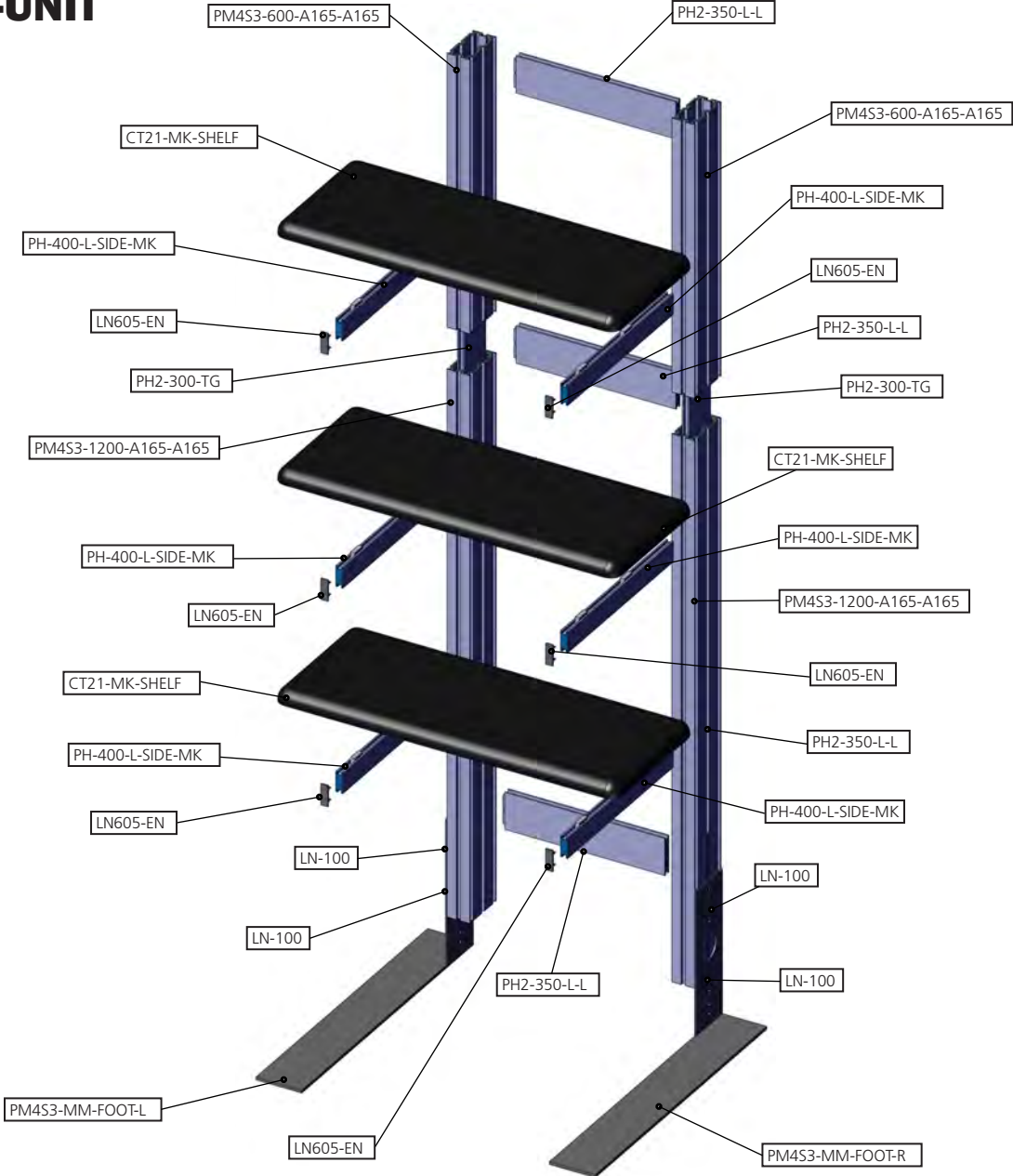


LN605-EN x6



Exploded View

PM4S3-MK-SHELF-UNIT

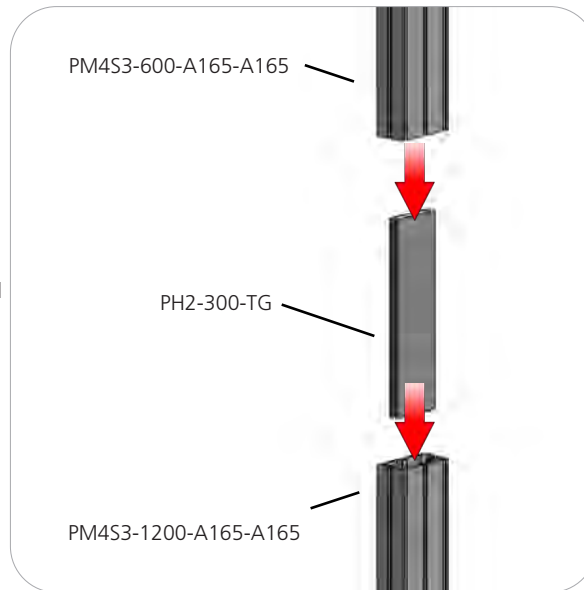


Kit Assembly

Step by Step

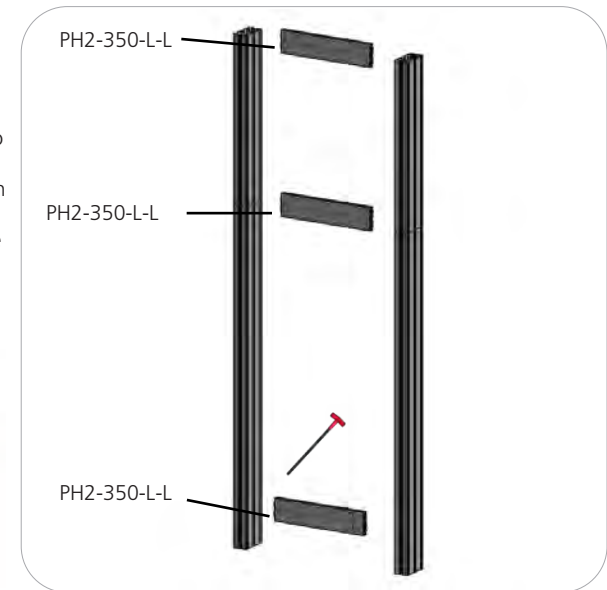
Step 1.

Reference the image to the right. Locate the coded extrusions. Slide the PH2-300-TG connector into one end of the PM4S3-1200-A165-A165 so that it goes as deep as the internal pins. Connect the PM4S3-600-A165-A165 by sliding it over the PH2-300-TG. Repeat for this step for the second vertical.



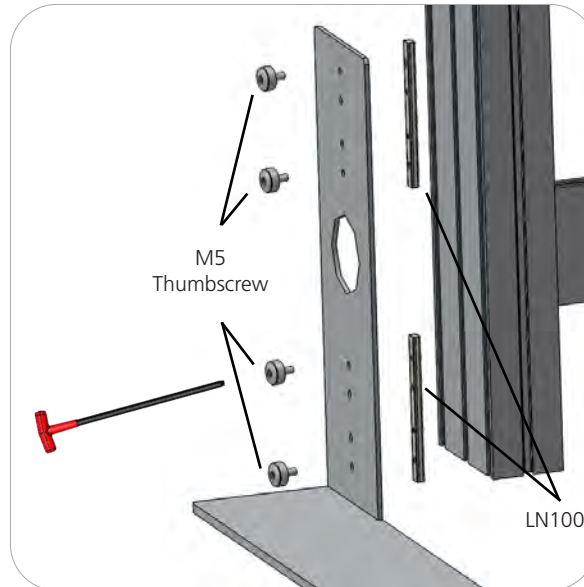
Step 2.

Collect your extrusions and handtool. Using the provided handtool, lock the extrusions into the back channel of the three channel PM4S3 faces as shown in the image below. Be sure the locks face toward the back of the assembly and do not over tighten.



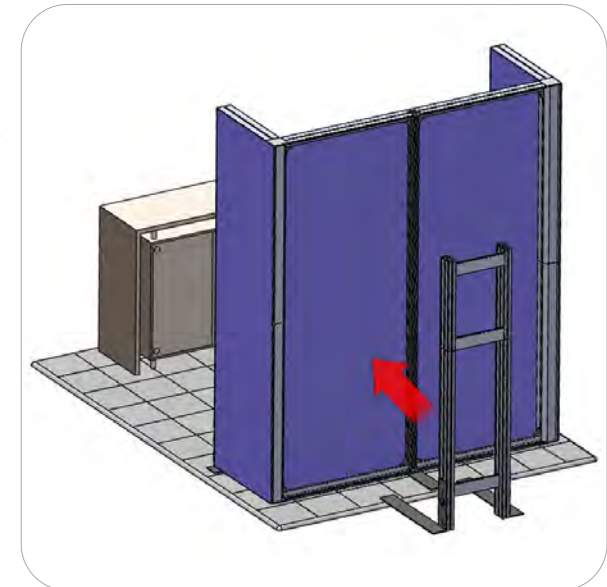
Step 3.

Locate the M5 thumbscrews, LN100s, and the PM4S3-MM stabilizing bases. Slide the LN100s into the middle channel of the PM4S3. Hand screw the M5 thumbscrews through the base holes and into the LN100 holes. Use the handtool to securely fasten the M5 Thumbscrews. Do not over tighten.



STOP

Orbus recommends that you move your kiosk(s) in place before continuing on with the rest of assembly.

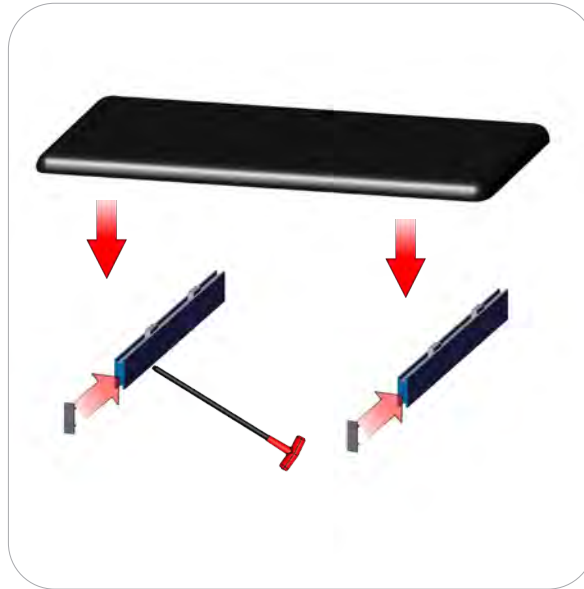


Kit Assembly

Step by Step - Shelf

Step 7.

Insert the LN605-EN end caps. Lock the CT21-MK-SHELF to the PH-400-L-SIDE-MK. Do not over tighten.



Step 8.

Lock your PH-400-L-SIDE-MK into the PM453 stacks at the desired dimension height. Do not over tighten.

Refer to the attached supplemental sheet for details on shelf height(s).

Setup is complete.

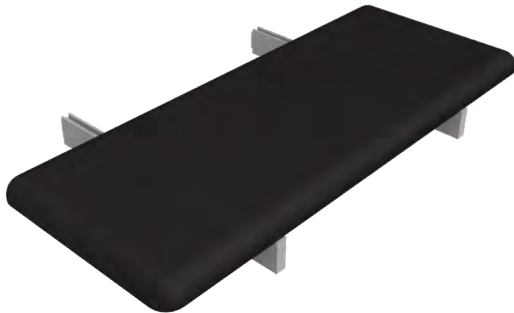
Repeat steps 7 and 8 twice more for Shelf Unit.



Freestanding Display Shelf

PM4S3-MK-SHELF

Freestanding display shelves are easily attached to your assembled kiosk for displaying promotional materials. This shelf can be added to a Freestanding Monitor Kiosk order.



features and benefits:

- Premium aluminum extrusion frames with cam lock and tension glide assembly
- Easy to store and ship
- Quick to set up
- Lifetime limited hardware warranty against manufacturer defects
- Great for display opportunities

dimensions:

Hardware	Shipping
<p>Assembled unit: Medium or Large</p> <p>29.53" w x 6.35" h x 15.87" d 751mm(w) x 162mm(h) x 404mm(d)</p> <p>Approximate weight (shelf): 10 lbs / 5 kgs</p>	<p>Ships in box</p> <p>Shipping dimensions: Special order - 30" (l) x 16" (h) x 4" (d) 762mm(l) x 407mm(h) x 102mm(d)</p> <p>Approximate total shipping weight: 12 lbs / 6 kgs</p>
additional information:	
<p>-Shelf can hold suggested max weight 15lbs</p> <p>-If shipping with backwall kit cases may vary</p>	

We are continually improving and modifying our product range and reserve the right to vary the specifications without prior notice. All dimensions and weights quoted are approximate and we accept no responsibility for variance. E&OE. See Graphic Templates for graphic bleed specifications.

Included In Your Freestanding Display Shelf

Components, Connectors & Extrusions



PH-400-L-SIDE-MK x2



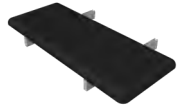
PE-1200 x2
*will ship preattached to shelf



CT21-MK-SHELF x1

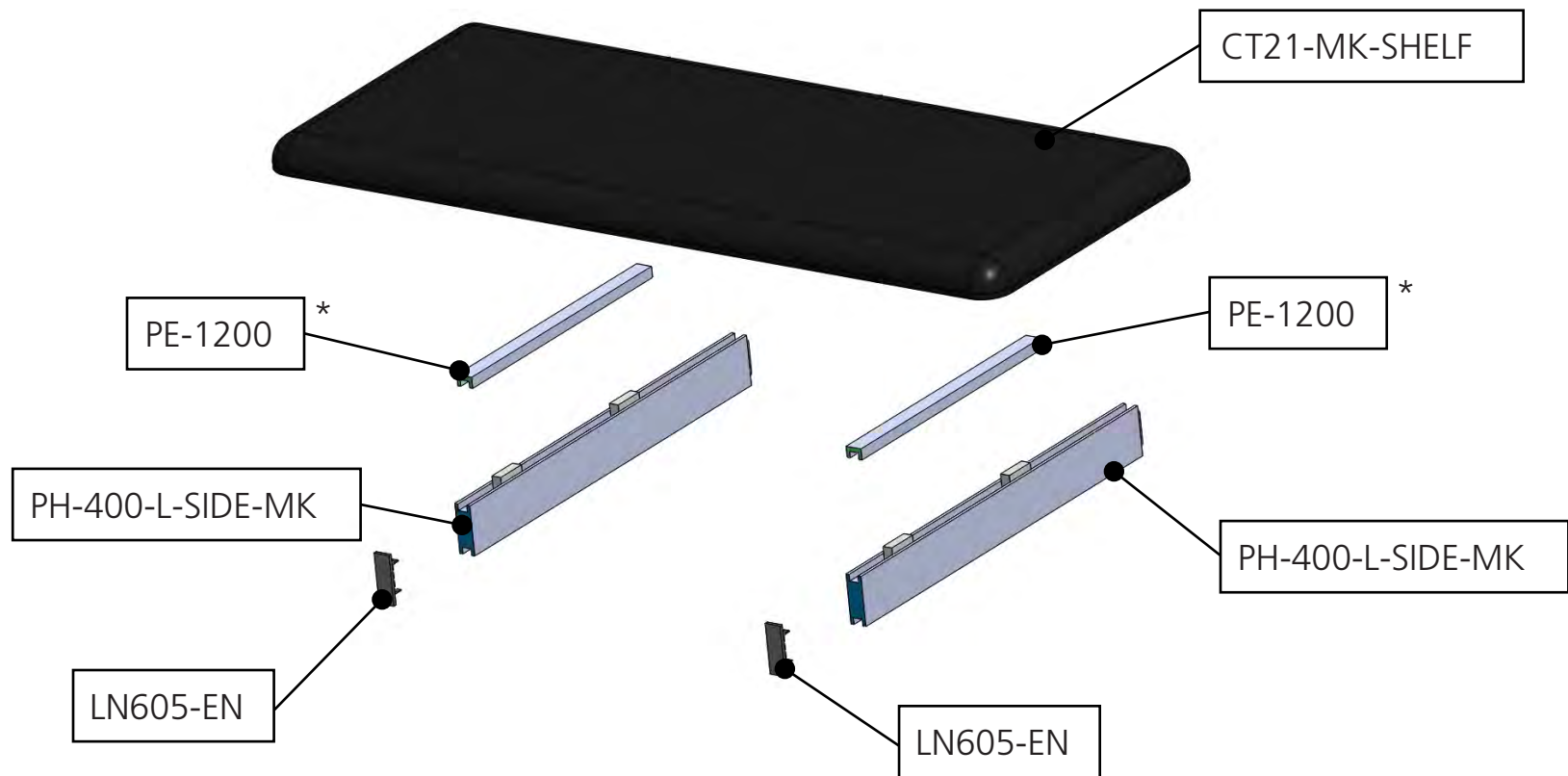


LN605-EN x2



Exploded View

PM4S3-MK-SHELF



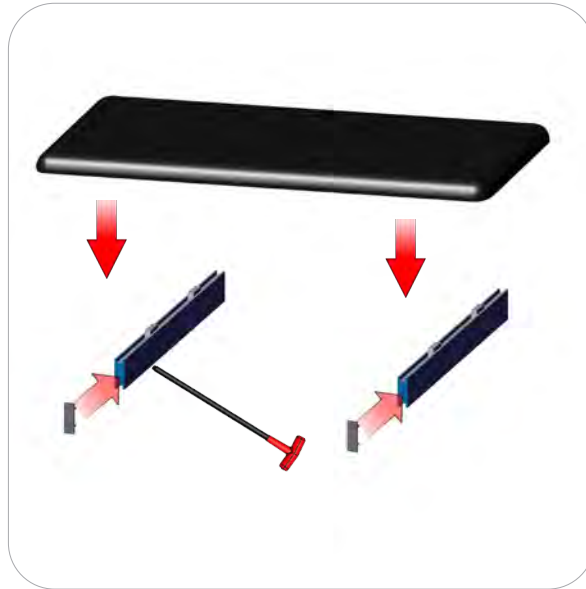
*Note: PE will ship preattached to shelf

Kit Assembly

Step by Step - Shelf

Step 8.

Insert the LN605-EN end caps. Lock the CT21-MK-SHELF to the PH-400-L-SIDE-MK. Do not over tighten.



Step 7.

Lock your PH-400-L-SIDE-MK into the PM453 stacks at the desired dimension height. Do not over tighten.

Refer to the attached supplemental sheet for details on shelf height(s).

Setup is complete.

Repeat steps 7 and 8 twice more for Shelf Unit.



Location of vinyl adhesive tape
Tape color-**CLEAR**

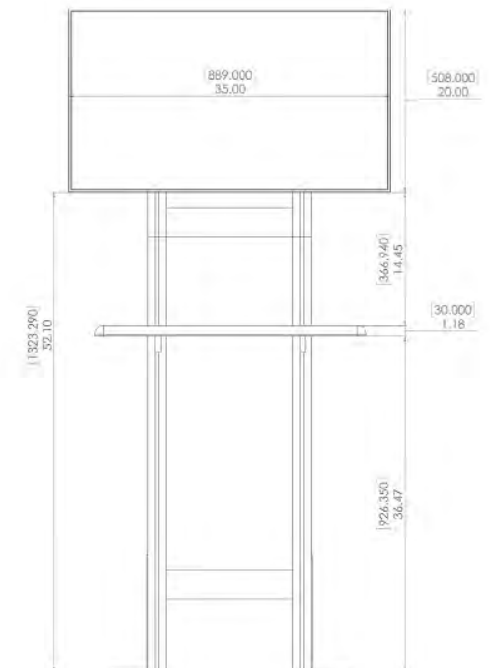
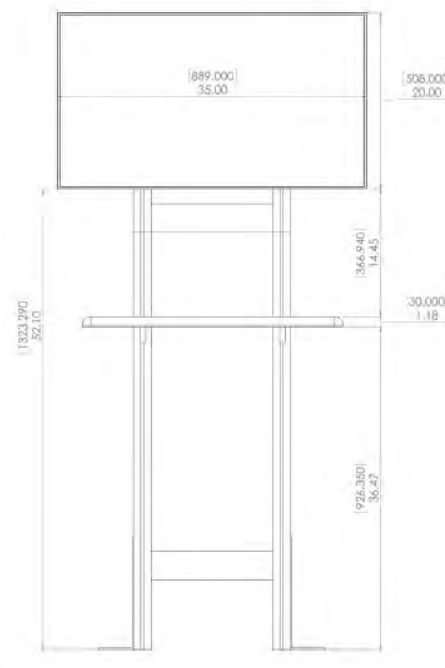
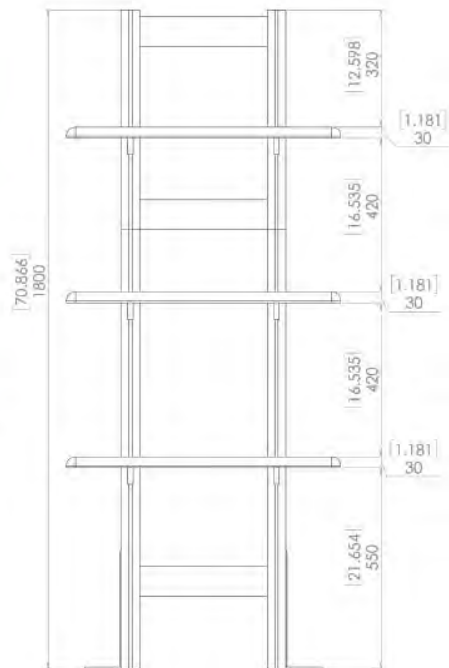
Indicator shown in green to show detail



TORQUATA
Self-Adhesive Measuring
Tape



Note: tape comes preattached to extrusion,
0" starts from the bottom (at the floor)



LABELING DIAGRAM FOR HP-K-28-SQU

SET UP INSTRUCTIONS:

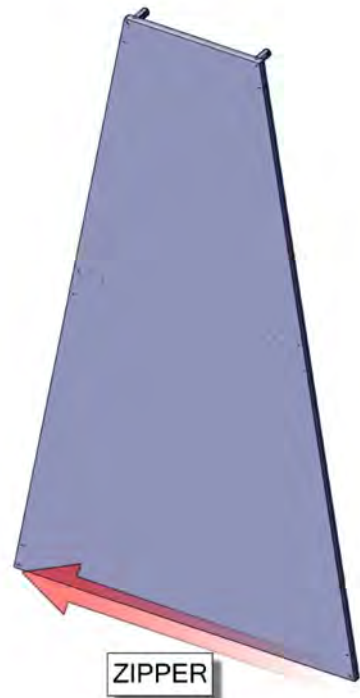
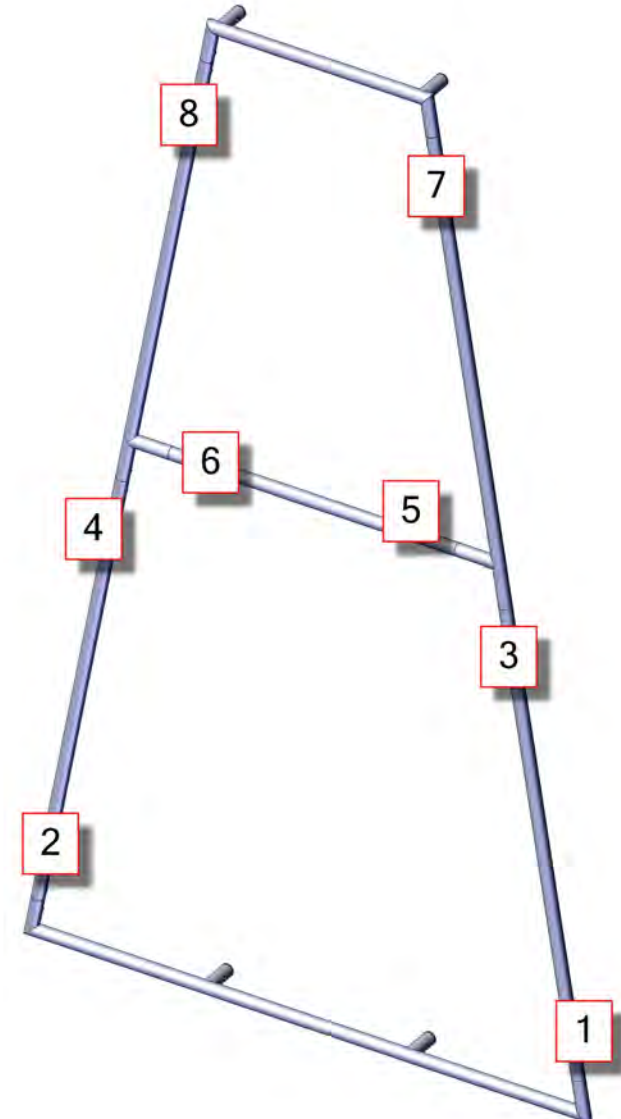
1. CONNECT BOTTOM AND TOP TUBES FOLLOWING THE LABELS
2. CONNECT SIDE TUBES
3. CLEAN THE FRAME AND PLACE THEM ON CLEAN PLACE
4. CAREFULLY REMOVE FABRIC COVER FROM BAG
5. PLACE COVER AROUND THE BOTTOM OF THE FRAME
6. PULL COVER CAREFULLY UP TO THE TOP
7. CLOSE ALL ZIPPERS
8. ADJUST FABRIC AROUND THE FRAME
9. CONNECT CABLE HARNESS TO THE EYEBOLTS
10. COMPLETELY TIGHTEN THREADED CONNECTORS

BREAK DOWN INSTRUCTIONS:

REVERSE SET-UP STEPS TO BREAKDOWN FRAME

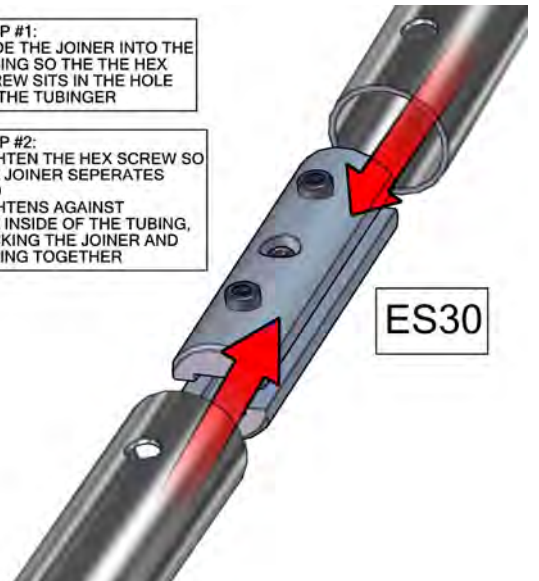
FABRIC CARE INSTRUCTIONS:

1. UNZIP COVER ZIPPERS
2. CAREFULLY REMOVE FABRIC COVER
3. CLOSE ALL ZIPPERS
4. FOLD OR ROLL NEATLY
5. PLACE FABRIC IN COVER BAG

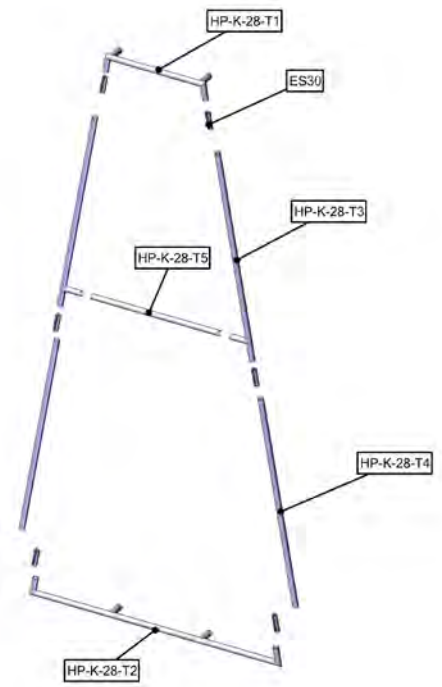


STEP #1:
SLIDE THE JOINER INTO THE TUBING SO THE THE HEX SCREW SITS IN THE HOLE ON THE TUBINGER

STEP #2:
TIGHTEN THE HEX SCREW SO THE JOINER SEPERATES AND TIGHTENS AGAINST THE INSIDE OF THE TUBING, LOCKING THE JOINER AND TUBING TOGETHER



PARTS DIAGRAM



LABELING DIAGRAM FOR HP-K-28-A&B-SQU

SET UP INSTRUCTIONS:

1. CONNECT BOTTOM AND TOP TUBES FOLLOWING THE LABELS
2. CONNECT SIDE TUBES
3. CLEAN THE FRAME AND PLACE THEM ON CLEAN PLACE
4. CAREFULLY REMOVE FABRIC COVER FROM BAG
5. PLACE COVER AROUND THE BOTTOM OF THE FRAME
6. PULL COVER CAREFULLY UP TO THE TOP
7. CLOSE ALL ZIPPERS
8. ADJUST FABRIC AROUND THE FRAME
9. CONNECT CABLE HARNESS TO THE EYEBOLTS
10. COMPLETELY TIGHTEN THREADED CONNECTORS

ZIPPER ON BOTTOM OF BOTH

**HP-K-28-A
HP-K-28-B**



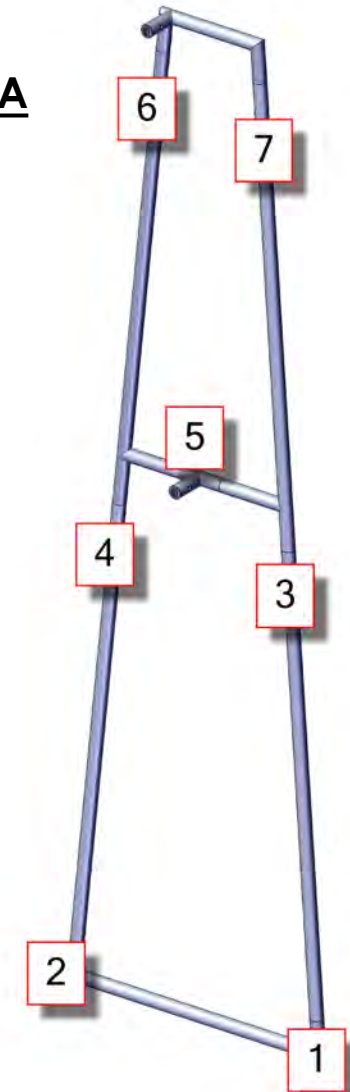
BREAK DOWN INSTRUCTIONS:

REVERSE SET-UP STEPS TO BREAKDOWN FRAME

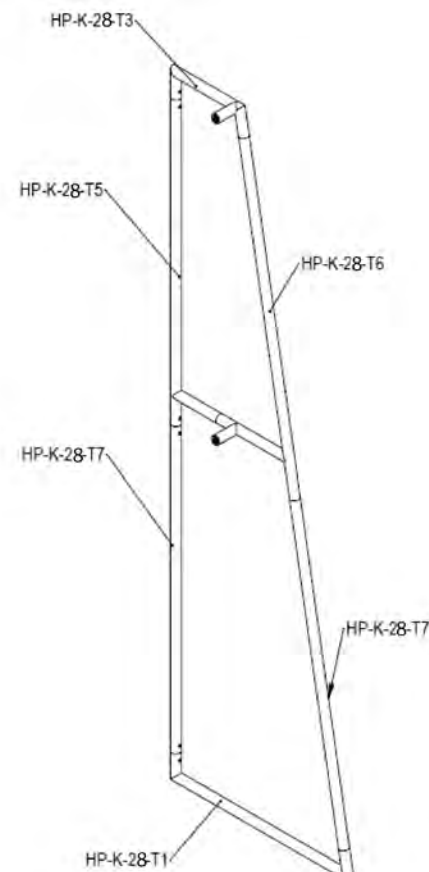
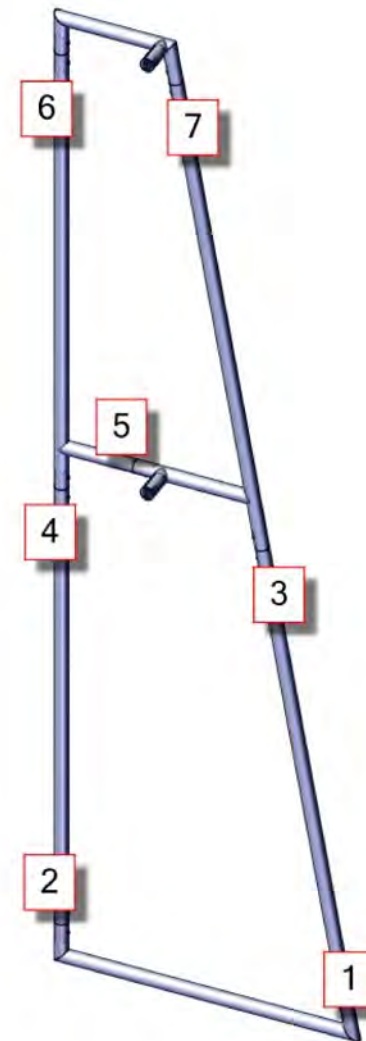
FABRIC CARE INSTRUCTIONS:

1. UNZIP COVER ZIPPERS
2. CAREFULLY REMOVE FABRIC COVER
3. CLOSE ALL ZIPPERS
4. FOLD OR ROLL NEATLY
5. PLACE FABRIC IN COVER BAG

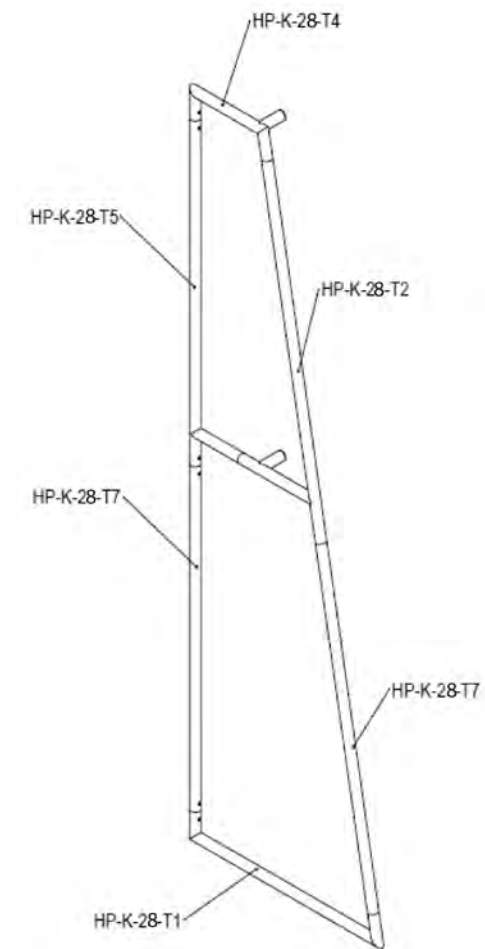
HP-K-28-A



HP-K-28-B



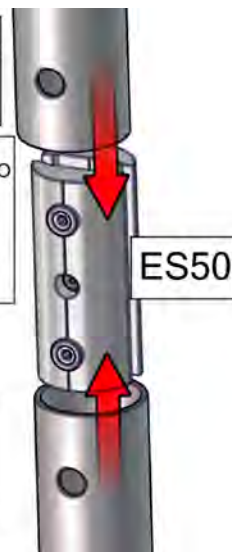
PARTS DIAGRAM



PARTS DIAGRAM

STEP #1:
SLIDE THE JOINER INTO THE TUBING SO THE THE HEX SCREW SITS IN THE HOLE ON THE TUBINGER

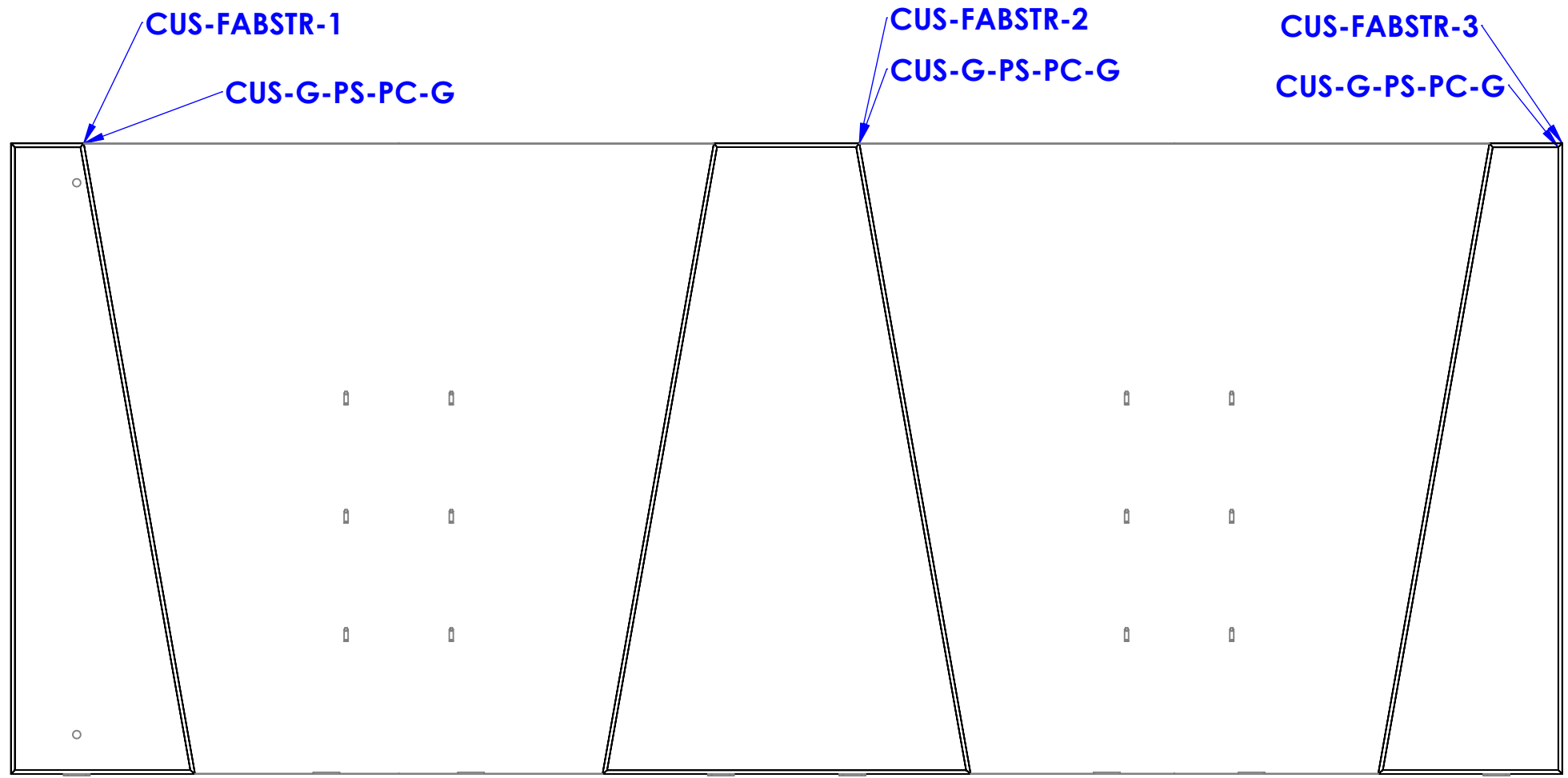
STEP #2:
TIGHTEN THE HEX SCREW SO THE JOINER SEPERATES AND TIGHTENS AGAINST THE INSIDE OF THE TUBING, LOCKING THE JOINER AND TUBING TOGETHER



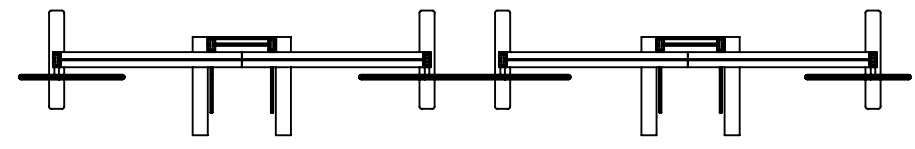
Code	#	Description
CUS-FABSTR-2	1	1200MM X 2400MM, 30MM CUSTOM FABRIC STRUCTURE
CUS-G-PS-PC-G	1	GRAPHIC(C1) 47.25 w x 94.50 h Pillowcase Graphic, dye-sub print on 8oz. Power Stretch, single sided, sewn with zipper.
CUS-FABSTR-1	1	600MM X 2400MM, 30MM CUSTOM FABRIC STRUCTURE
CUS-G-PS-PC-G	1	GRAPHIC(A1) 23.62 w x 94.50 h Pillowcase Graphic, dye-sub print on 8oz. Power Stretch, single sided, sewn with zipper.
CUS-FABSTR-3	1	600MM X 2400MM, 30MM CUSTOM FABRIC STRUCTURE
CUS-G-PS-PC-G	1	GRAPHIC(E1) 23.62 w x 94.50 h Pillowcase Graphic, dye-sub print on 8oz. Power Stretch, single sided, sewn with zipper.

FABRIC STRUCTURE GRAPHICS

HAVE TWO PEOPLE HELP WITH MOUNTING THE FABRIC STRUCTURE



TOP VIEW

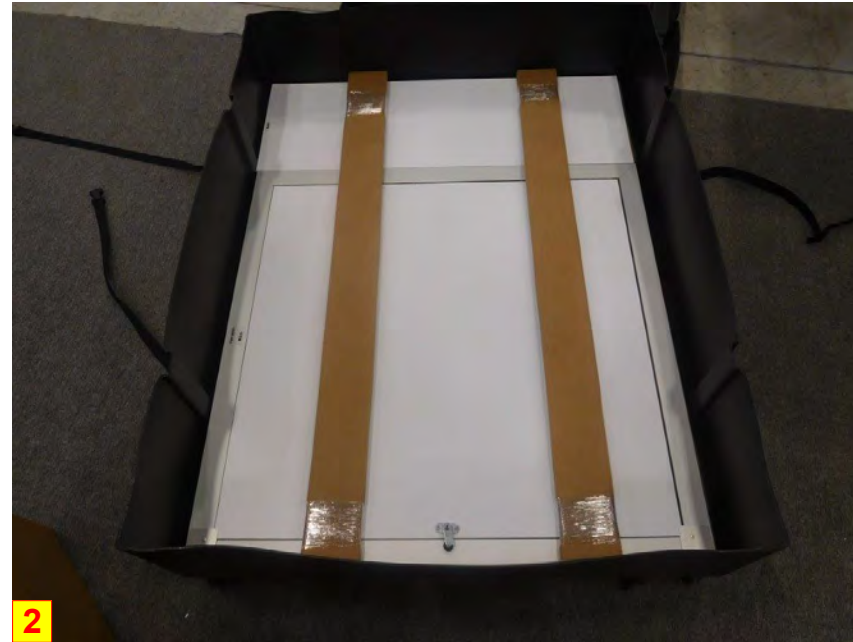


PACKING INSTRUCTIONS



1

(1) R57, (1) R58



2

(1) R56, (1) R58



5

(1) SET KEY
(1) BOOKLET



3

(1) 33 GRAPHIC



4

CT-31L, (4) L90S-900

CASE # 1

LEGEND	
	GREY FOAM FOLDED TO FILL EMPTY SPACES OR USED AS PROTECTION
	1/8" CARDBOARD SPACER (PUT IN BETWEEN EVERY PANEL)
	DIVIDER
	1/4" WHITE FOAM (USED AS PROTECTION DOOR PANELS W/ LOCKS)

