

SLF-1020-1M

Dynamic modular exhibit that features an 8' tall backwall, six shelves for small product display with laminate soffit with puck lights and a central monitor mount that holds a large sized monitor. Push-fit SEG fabric graphics are easy to apply to the backwall



features and benefits:

- Silver aluminum extrusion frames (3)
- SEG push-fit fabric graphics (5)
- Shelf color options: Silver, Black, Mahogany, Natural
- Large monitor bracket holds 40-65" LCD*, max weight: 80 lbs
- Ships freight in a roto-molded protective shipping case
- Foreground counter and LCD monitor not included
- Each shelf can hold 15lbs
- Lifetime hardware warranty against manufacturer defects

dimensions:

Hardware

Graphic

Assembled unit:
236.47" w x 95.45" h x 33.58" d
6006.34mm(w) x 2424.43mm(h) x
852.94mm(d)

Refer to related graphic template for more information.

Approximate weight:
525.83 lbs / 238.4 kg

Shipping

additional information:

Packing case(s):
SCRATE

Graphic material:
Dye-sublimation SEG push-fit fabric

Shipping dimensions:
57" l x 59" h x 34" d
1448mm(l) x 1499mm(h) x 864mm(d)

When included in a larger kit, a different packaging solution will be listed to accommodate all contents of the kit. Individual packaging no longer provided.

Approximate total shipping weight:
644.83 lbs / 292.49 kg

Shelf colors



silver black mahogany natural

3 person assembly recommended:



We are continually improving and modifying our product range and reserve the right to vary the specifications without prior notice. All dimensions and weights quoted are approximate and we accept no responsibility for variance. E&OE. See Graphic Templates for graphic bleed specifications.

Setup notes

1. Redesign of this exhibit without approval by manufacture may result in dangerous and unsafe structures. Manufacture disclaims any responsibility for redesigned exhibits it does not approve in writing.

2. Parts and components such as panels and extrusions are manufactured to metric sizing. Where ever possible sizes have been noted in feet and inches as well as in metric. Below is the imperial to metric sizing table as a reference. 'Nominal' refers to approximate sizes.

IMPERIAL TO METRIC SIZES

8' Nominal = 94 1/2" or 2400mm Actual
4' Nominal = 47 1/4" or 1200mm Actual
3' Nominal = 35 7/16" or 900mm Actual
2' Nominal = 23 5/8" or 600mm Actual
1' Nominal = 11 13/16" or 300mm Actual

TOP DOWN LAYOUT

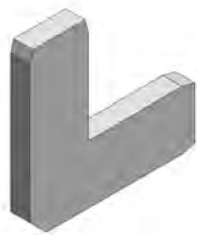


Included In Your Kit

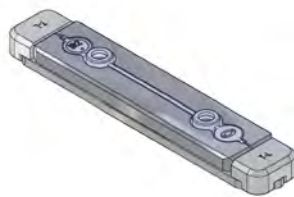
Tools, Components, & Connectors



HEX KEY SET x1



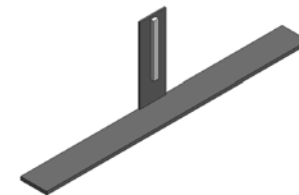
CB9 x20



IB2 x13



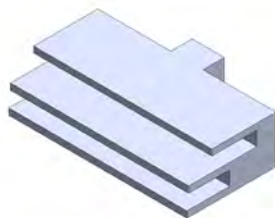
WOOD-SOFFET x4



SW-FOOT-500-LNx2



CUS-PHFC2-750-MCB9-MCB9x4



FC-50-SPACER x8



CUS-PHFC4-725-L1-MCB9 -x2



PHFC2-1000-L-MCB9-SIDE x4



PHFC2-1200-L-MCB9-SIDEx4



PHFC4-1200-L-MCB9x4



PHFC2-750-L-MCB9x4



CODEPH1-1155-L-L1x2



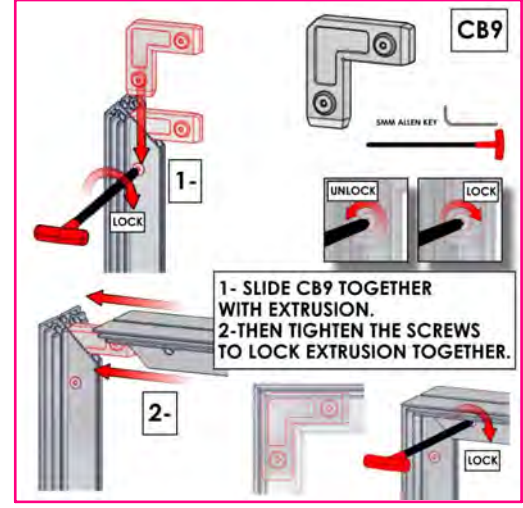
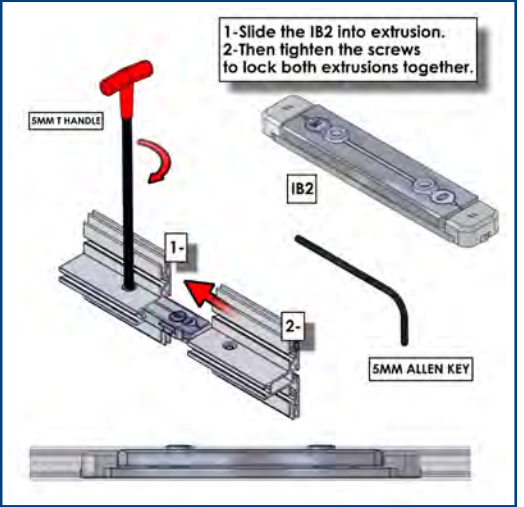
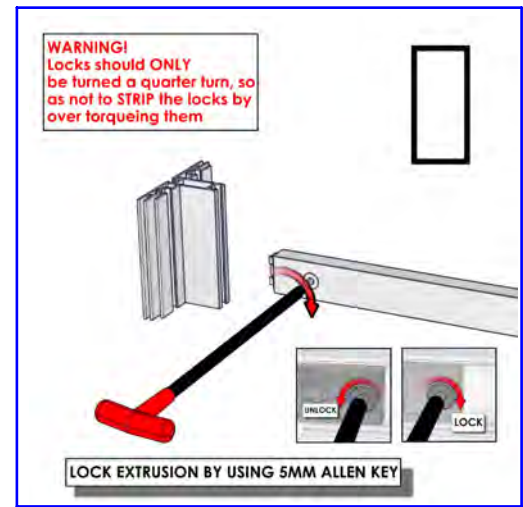
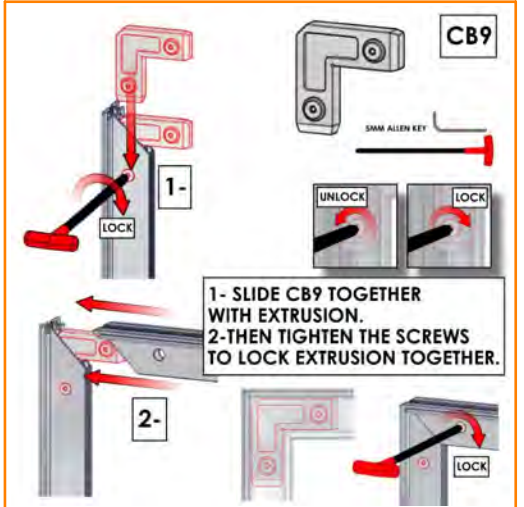
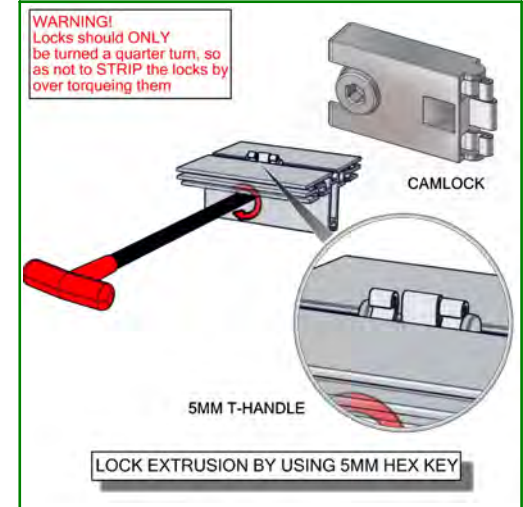
PH4-300-TGx2



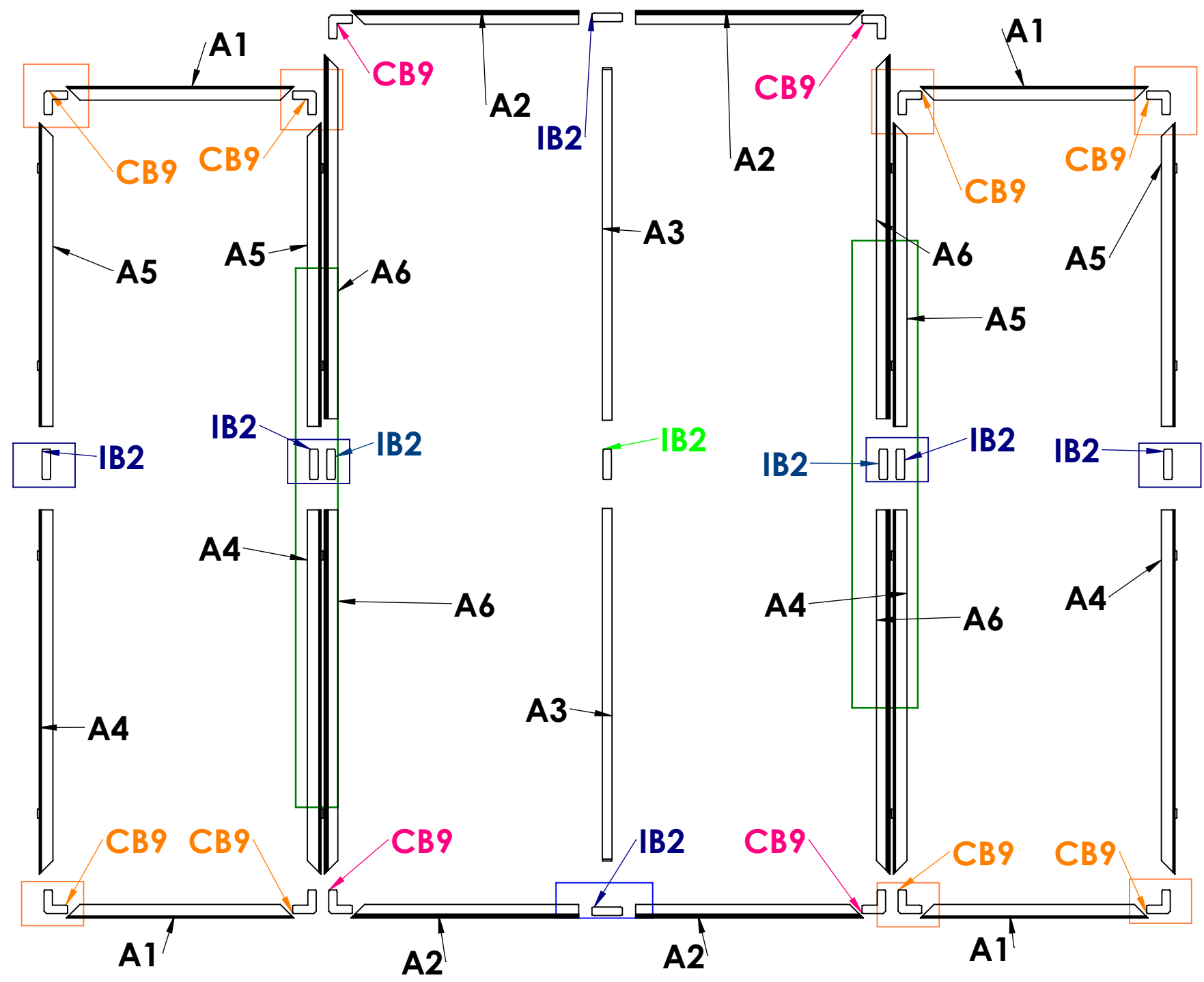
PM2S2-A165-Nx4

Code	#	Description
A4	4	PHFC2-1200 EXTRUSION-WITH IB2 LOCK HOLE-WITH MITRE CUT FOR CB9-SIDE LOCKS
CB9	12	90 DEGREE JOINER
A1	4	750MM CUT DOWN FROM 900MM LENGTH OF PHFC2 EXTRUSION-WITH MITRE CUT FOR CB9-WITH MITRE CUT FOR CB9
IB2	9	JOINER BAR(NEW DESIGN)
A5	4	PHFC2-1000 EXTRUSION-WITH MITRE CUT FOR CB9-WITH IB2 LOCK HOLE-SIDE LOCKS
A3	2	1155MM PH1 EXTRUSION-WITH IB2 LOCK HOLE-CAM LOCK
A6	4	PHFC4-1200 EXTRUSION-WITH IB2 LOCK HOLE-WITH MITRE CUT FOR CB9
A2	4	750MM CUT DOWN FROM 900MM LENGTH OF PHFC4 EXTRUSION-WITH IB2 LOCK HOLE-WITH MITRE CUT FOR CB9

CENTER VECTOR FRAME

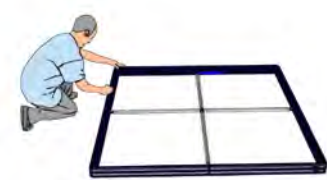
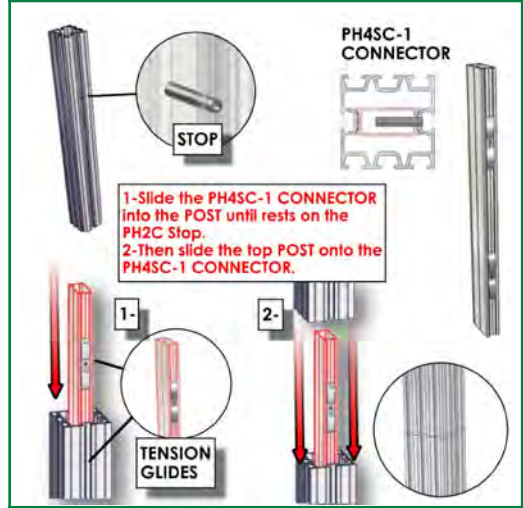
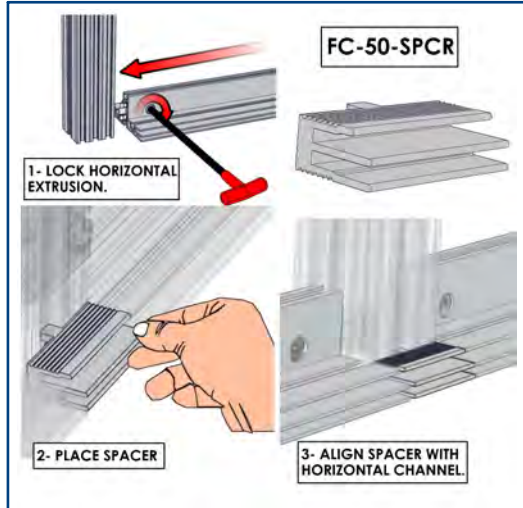
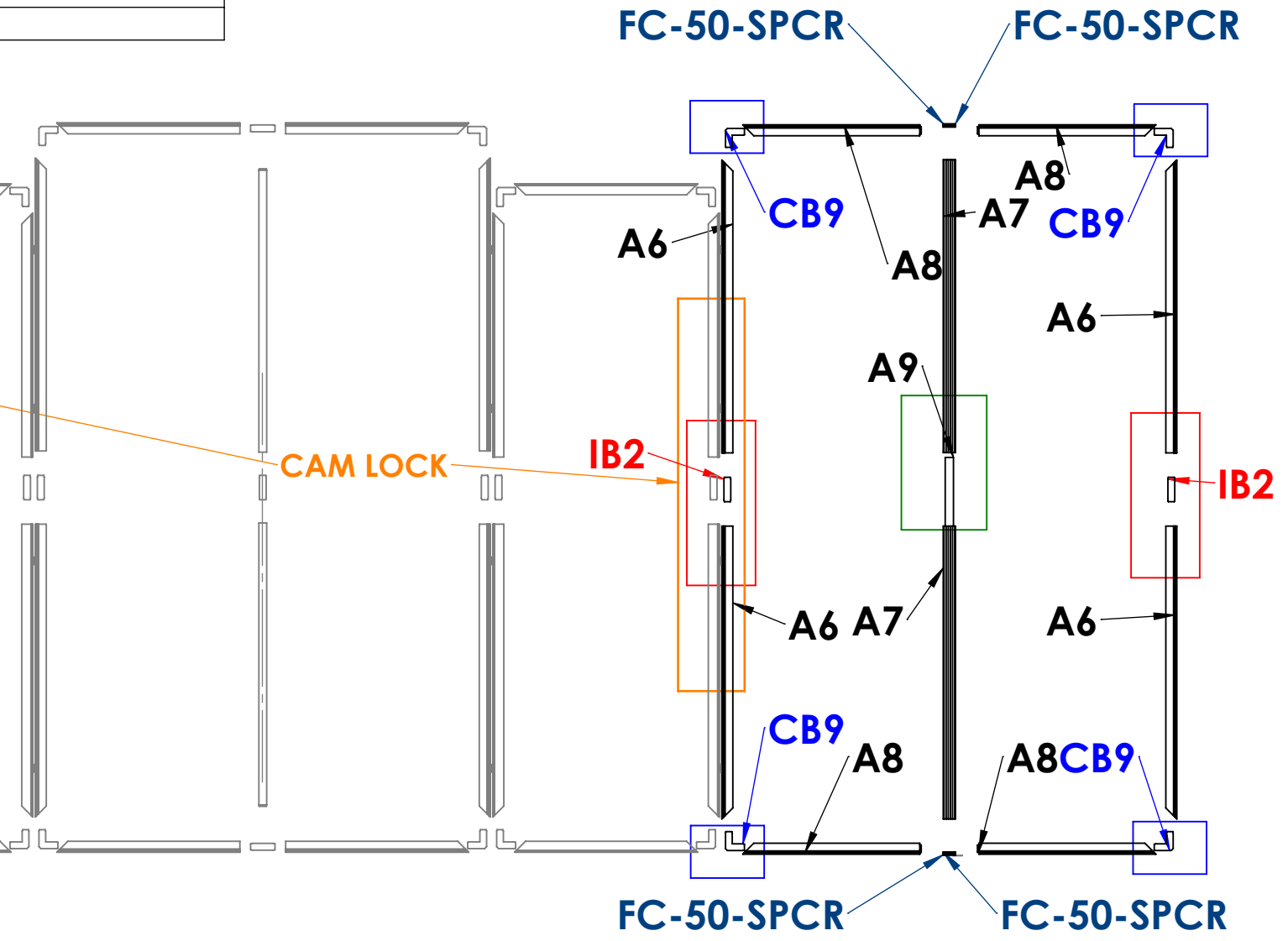
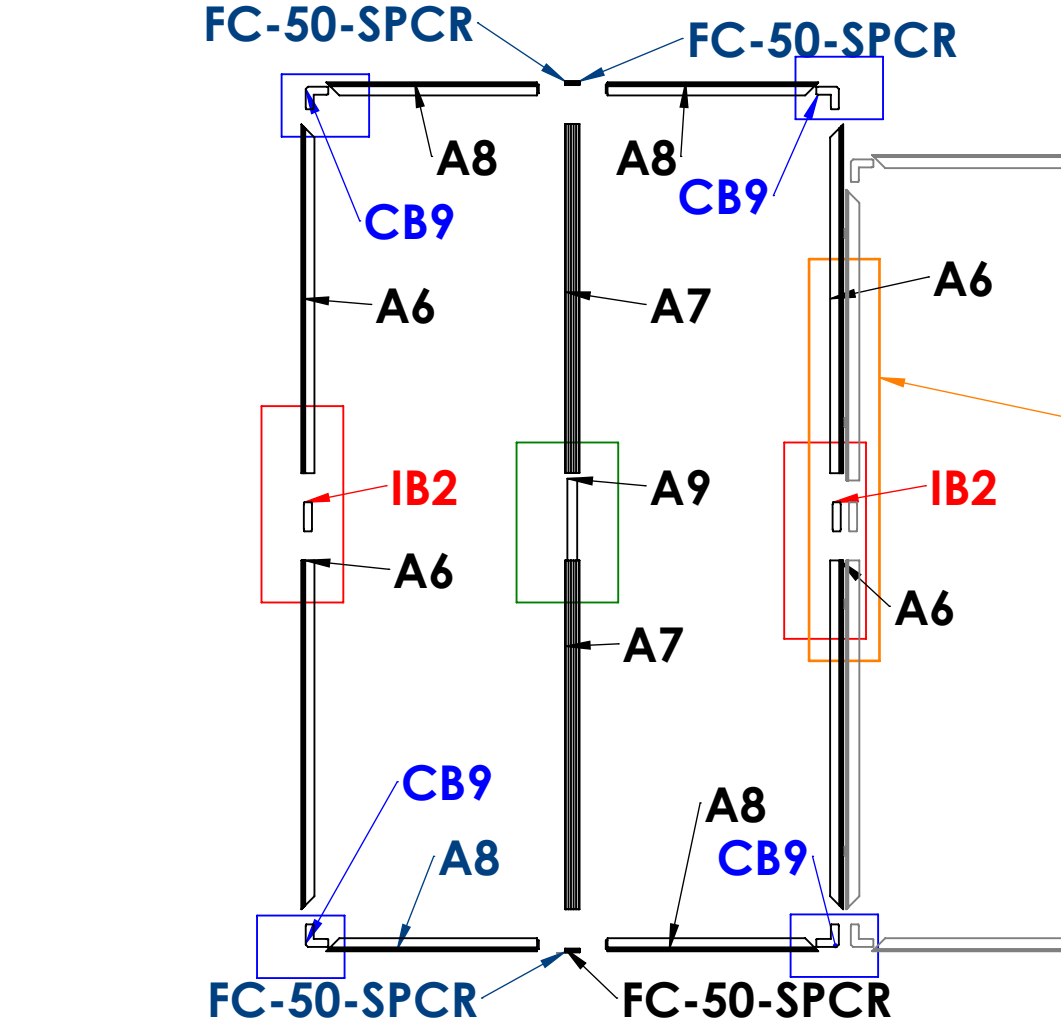
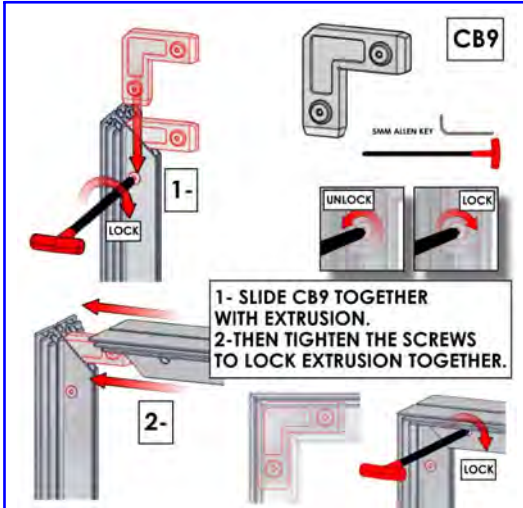
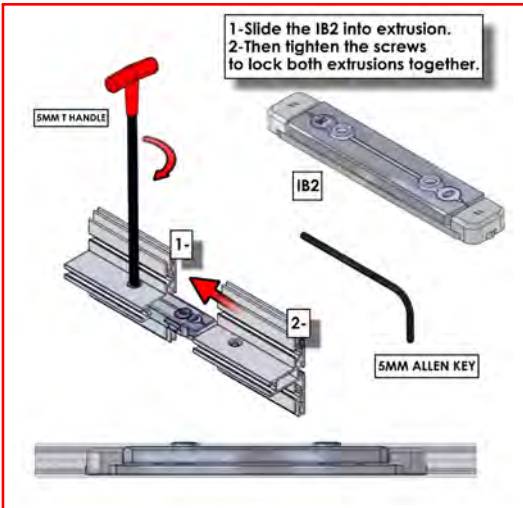


ASSEMBLY LAYING DOWN



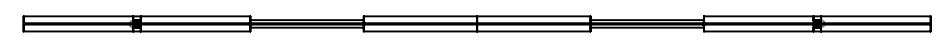
Code	#	Description
A8	8	725MM CUT DOWN FROM 900MM LENGTH OF PHFC4 EXTRUSION-WITH CAM LOCKS-WITH MITRE CUT FOR CB9
CB9	8	90 DEGREE JOINER
IB2	4	JOINER BAR(NEW DESIGN)
A6	8	PHFC4-1200 EXTRUSION-WITH IB2 LOCK HOLE-WITH MITRE CUT FOR CB9
FC-50-SPCR	8	FC-50-SPCR - FRAME CHANNEL SPACER IN ABS
A7	2	PM2S2-1200 EXTRUSION-WITH STOP AT 165MM-WITH NUT INSERT
A9	2	300MM PH4 EXTRUSION WITH TENSION GLIDES
A7	2	PM2S2-1200 EXTRUSION-WITH NUT INSERT-WITH STOP AT 165MM

RIGHT AND LEFT VECTOR FRAMES

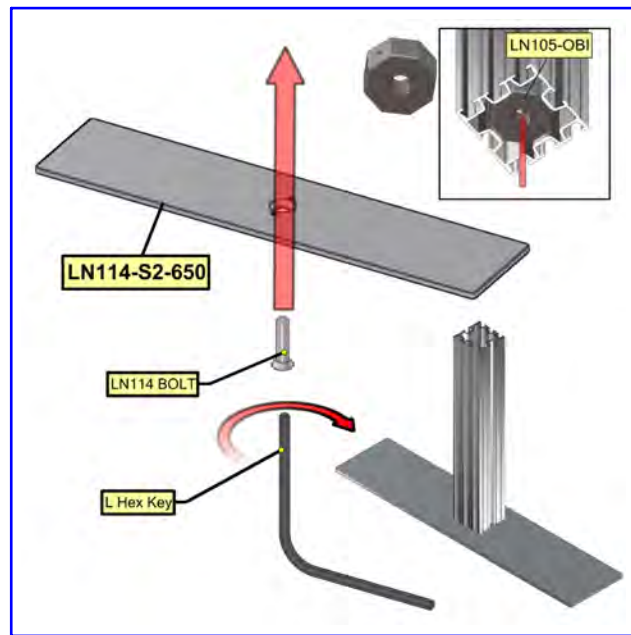
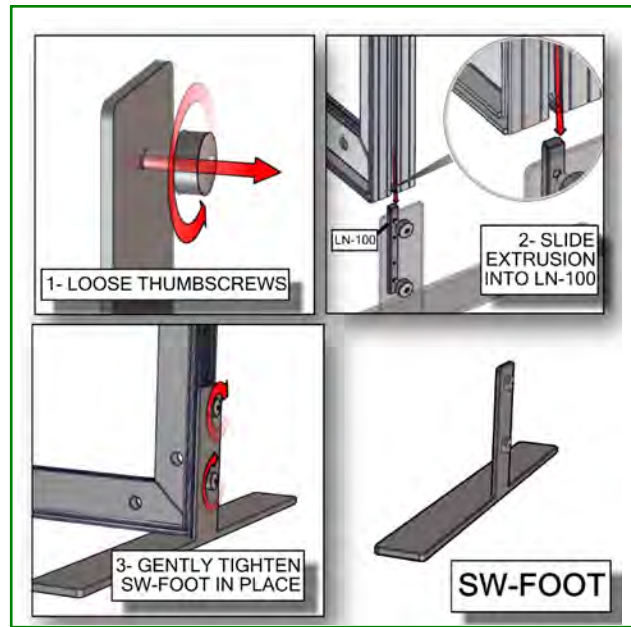


ASSEMBLE LAYING DOWN

TOP VIEW

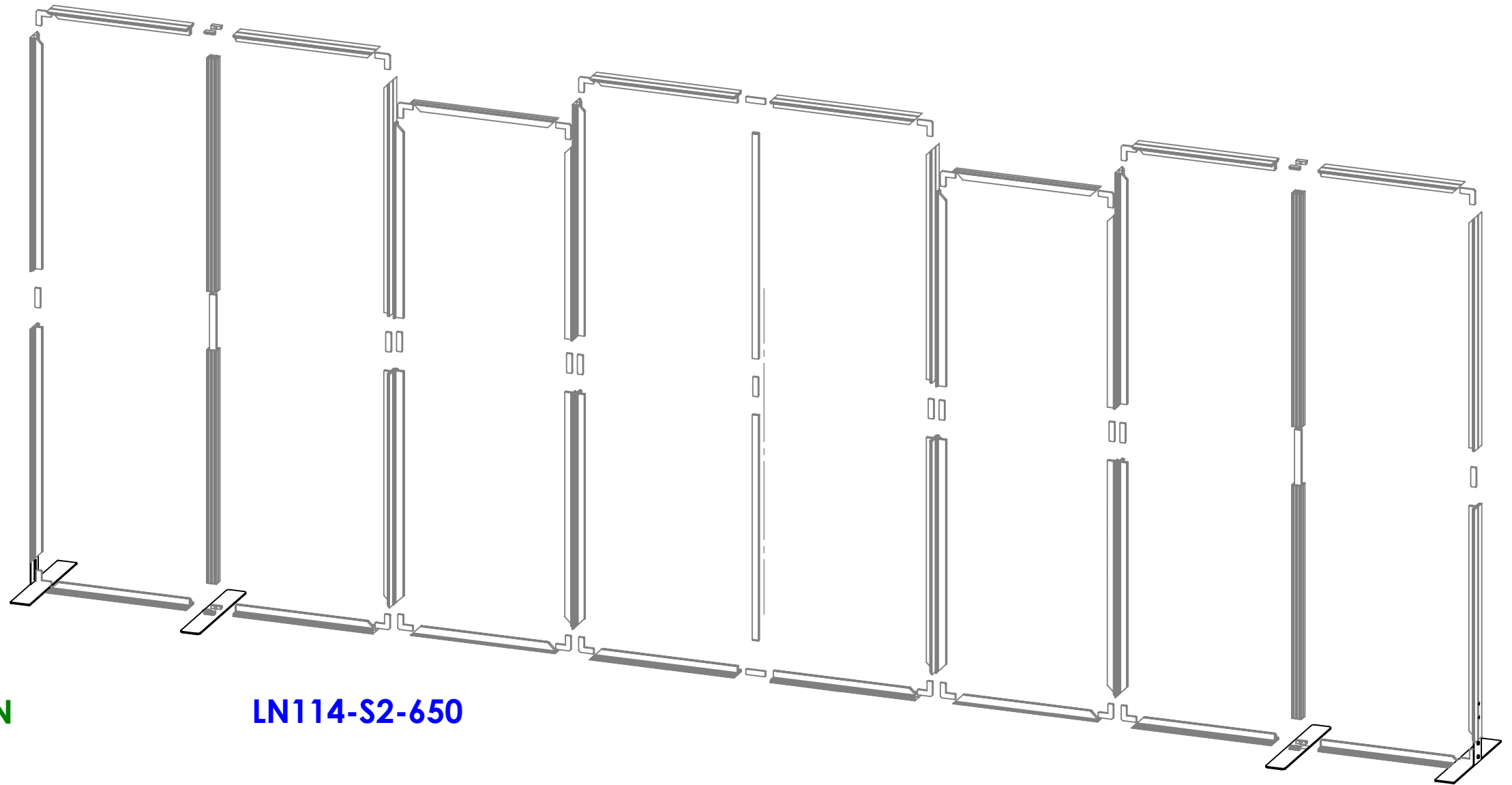


Code	#	Description
SW-FOOT-650-LN	2	SMART WALL FOOT 650MM LENGTH, WITH LN100 & M5 THUMBSCREWS
LN114-S2-650	2	FOOT PLATE , 650MM LENGTH



SW-FOOT-650-LN

LN114-S2-650



LN114-S2-650

SW-FOOT-650-LN

TOP VIEW



Freestanding Monitor Kiosk

PM4S3-MK-M
PM4S3-MK-L

PM4S3-MK-M-MSHELF
PM4S3-MK-L-MSHELF

PM4S3-MK-SHELF-UNIT

The Freestanding Monitor Kiosk is a superior multimedia display that can be used for multiple applications, as well as in trade show exhibits and for events. Kiosks include monitor mounts to support a medium or large size TV, and a corresponding medium or large shelf may be added. Monitor mounts support TV's up to 40 lbs and 32" - 65" in size, and can be adjusted to the perfect height; an included shelf can hold up to 15 lbs. The Shelf Unit is a great addition that proudly displays small products. Install the Freestanding line behind a fabric backwall for a truly impressive display.



Freestanding Monitor Kiosk



Freestanding Monitor Kiosk with Shelf



Freestanding Shelf Unit

features and benefits:

- Premium aluminum extrusion frames with cam lock and tension glide assembly
- Easy to store and ship
- Quick to set up
- Weighted feet for added stability
- Kits may include: a medium or large monitor mount, shelf, or combination
- Choice of medium or large shelf for display opportunities (Freestanding Monitor Kiosk with Shelf or Freestanding Shelf)
- Lifetime limited hardware warranty against manufacturer defects

dimensions:

Hardware

Assembled unit (no shelf):
25.59" w x 70.98" h x 25.59" d
650mm(w) x 1803mm(h) x 650mm(d)

Assembled unit (with shelf):
29.53" w x 70.98" h x 25.59" d
751mm(w) x 1803mm(h) x 650mm(d)

Approximate weight:
(excludes cases & monitor mount)

40 lbs / 19 kgs

Add 10 lbs / 5 kgs for each shelf

Shipping

Packing case(s):
1 OCE Case

Shipping dimensions:
OCE: Expandable case length (l) may vary
40" - 66" l x 18" h x 18" d
1016mm-1677mm(l) x 458mm(h) x 458mm(d)

Approximate total shipping weight:
Monitor Kiosk:
(Case & monitor mount)
Medium
83 lbs / 38 kgs
Large
85 lbs / 39 kgs

additional information:

-Medium monitor mount can hold 32-55" monitor/ max weight 40lbs

-Large monitor mount can hold 40"-65" monitor/ max weight 40lbs

-Monitor not included

-Shelf can hold suggested max weight: 15 lbs

-If shipping with backwall kit cases may vary

Monitor Kiosk with Shelf:
(Case, monitor mount, & shelf)

Medium
93 lbs / 43 kgs
Large
95 lbs / 44 kgs

Shelf Unit:
(Case & shelves)
116 lbs / 53 kgs

We are continually improving and modifying our product range and reserve the right to vary the specifications without prior notice. All dimensions and weights quoted are approximate and we accept no responsibility for variance. E&OE. See Graphic Templates for graphic bleed specifications.

Included In Your Freestanding Monitor Kiosk with Shelf

Tools, Components, Connectors & Extrusions



5MM ALLEN-T x1



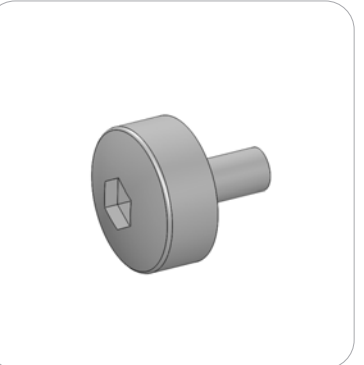
PM4S3-MM-FOOT-L x1



PM4S3-MM-FOOT-R x1



LN100 x6



M5 THUMBSCREW x8



PH2-350-L-L x3



PH5-100-L-L x2



PM4S4-150 x2



PM4S3-600-A165-A165 x2



PM4S3-1200-A165-A165 x2



PH2-300-TG x2



EXT-M-MB (or) EXT-LG-MB x1
Fastening Hardware Included



Included In Your Freestanding Shelf

Tools, Components, Connectors & Extrusions



5MM ALLEN-T x1



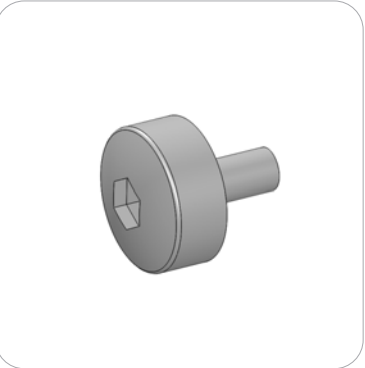
PM4S3-MM-FOOT-L x1



PM4S3-MM-FOOT-R x1



LN100 x6



M5 THUMBSCREW x8



PH2-350-L-L x3



PM4S3-600-A165-A165 x2



PM4S3-1200-A165-A165 x2



PH2-300-TG x2



PH-400-L-SIDE-MK x6



PE-1200 x6
*will ship preattached to shelf



CT21-MK-SHELF x3



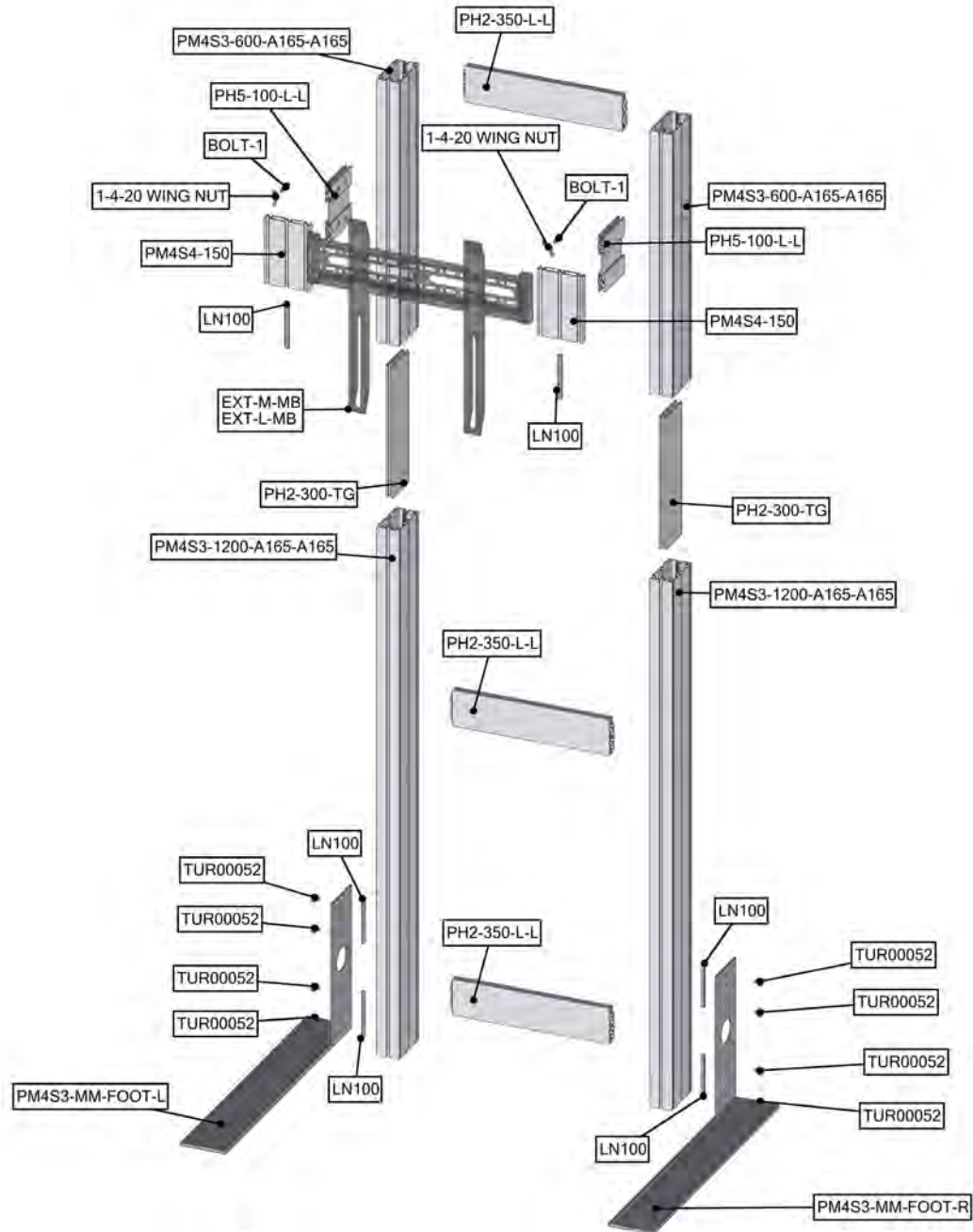
LN605-EN x6



Exploded View

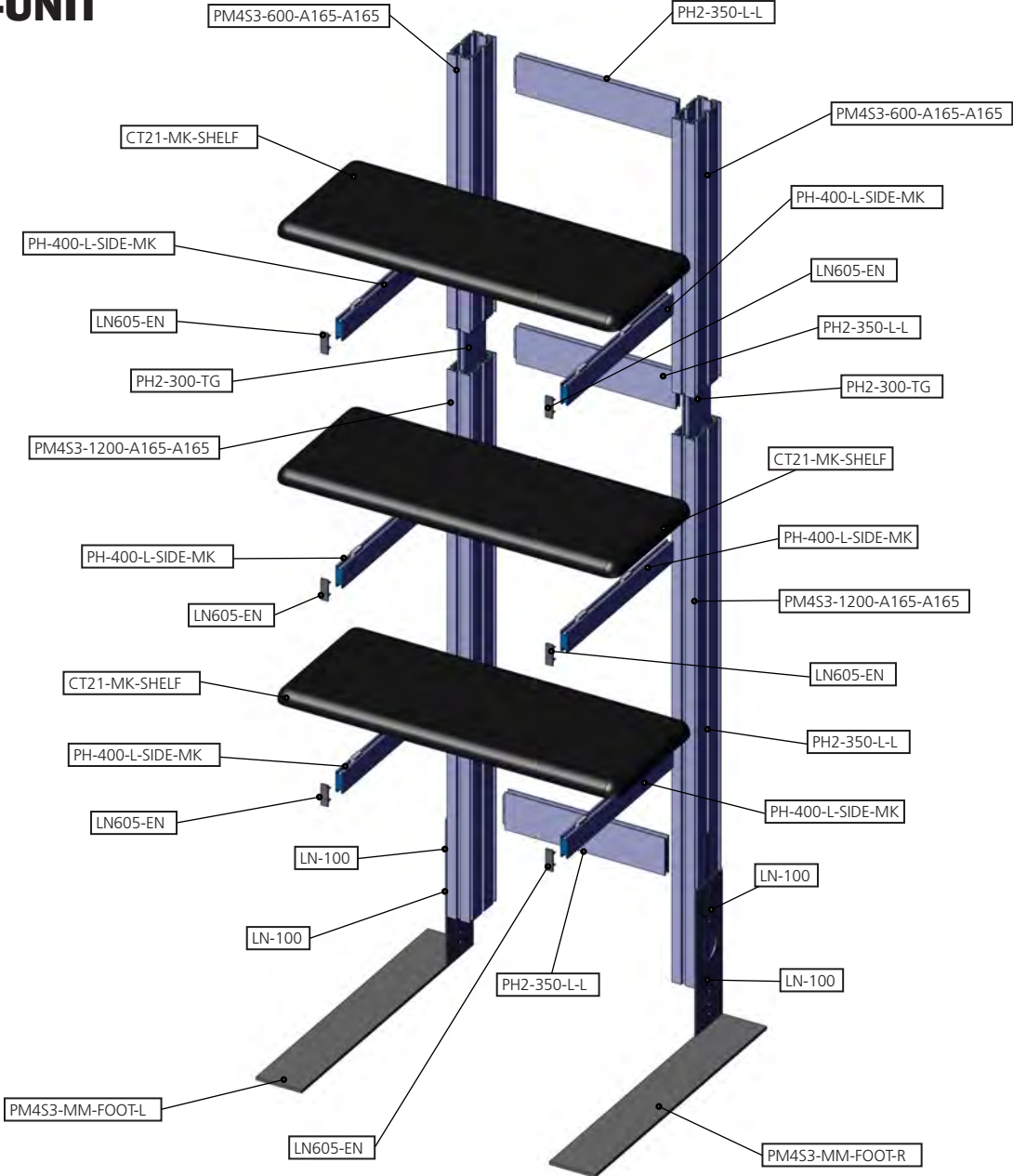
PM4S3-MK-M PM4S3-MK-L

Please note:
This is the kiosk frame build for
either medium or large kit.



Exploded View

PM4S3-MK-SHELF-UNIT

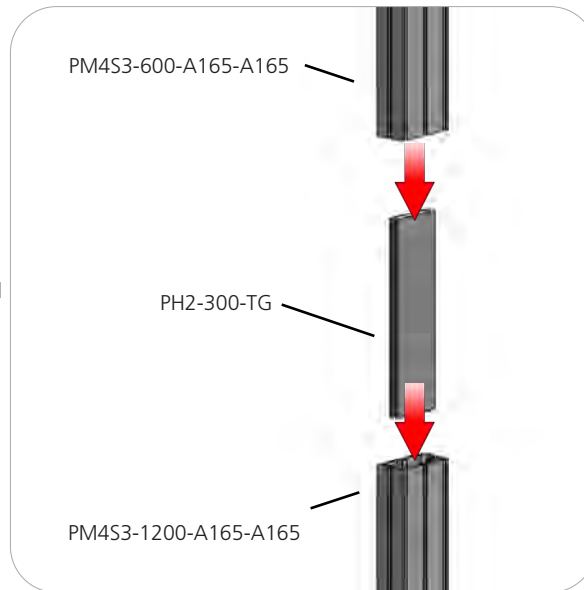


Kit Assembly

Step by Step

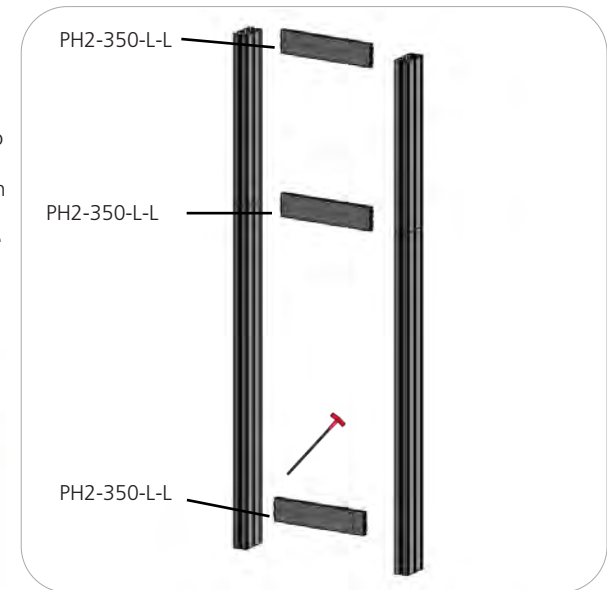
Step 1.

Reference the image to the right. Locate the coded extrusions. Slide the PH2-300-TG connector into one end of the PM4S3-1200-A165-A165 so that it goes as deep as the internal pins. Connect the PM4S3-600-A165-A165 by sliding it over the PH2-300-TG. Repeat for this step for the second vertical.



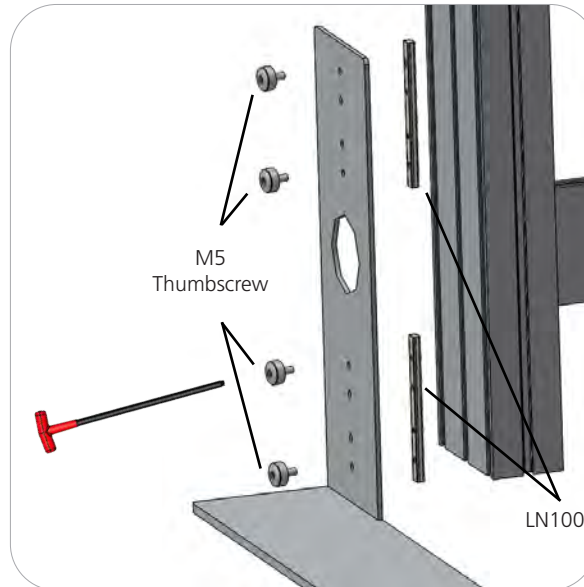
Step 2.

Collect your extrusions and handtool. Using the provided handtool, lock the extrusions into the back channel of the three channel PM4S3 faces as shown in the image below. Be sure the locks face toward the back of the assembly and do not over tighten.



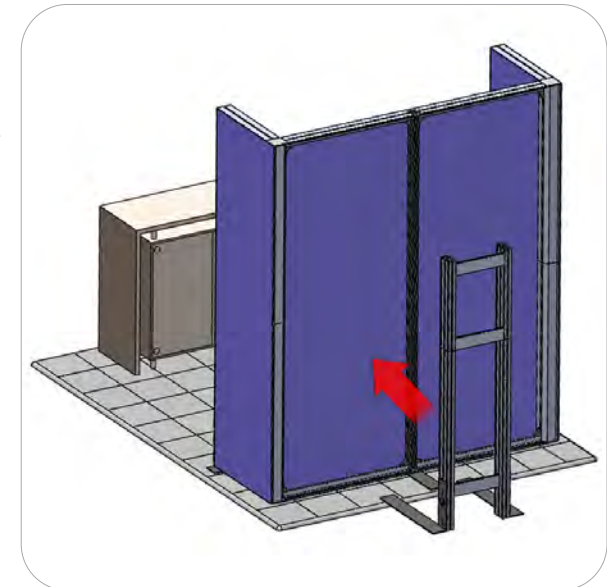
Step 3.

Locate the M5 thumbscrews, LN100s, and the PM4S3-MM stabilizing bases. Slide the LN100s into the middle channel of the PM4S3. Hand screw the M5 thumbscrews through the base holes and into the LN100 holes. Use the handtool to securely fasten the M5 Thumbscrews. Do not over tighten.



STOP

Orbus recommends that you move your kiosk(s) in place before continuing on with the rest of assembly.



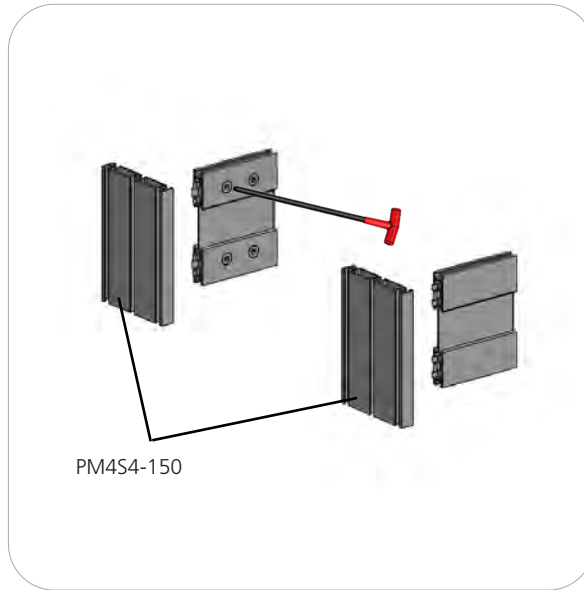
Kit Assembly

Step by Step - Monitor Mount

Step 4.

This step is for kiosks with monitor mounts. Skip to step 7 for shelf kiosks.

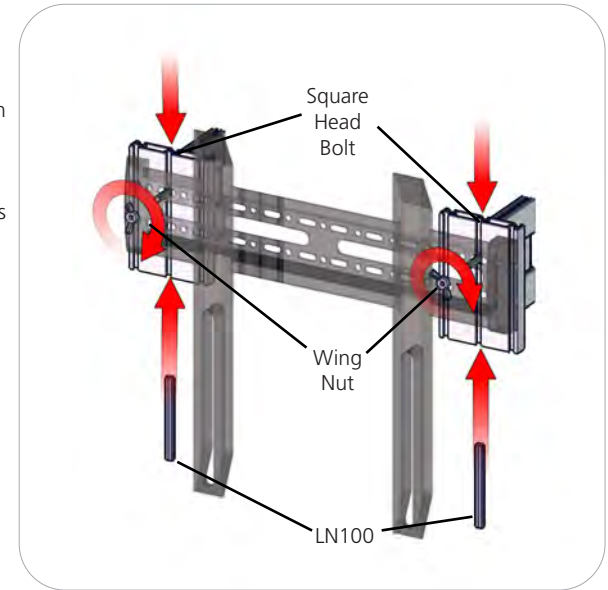
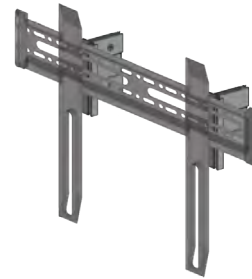
Measure from the ground to the center of the hole in your main kit's graphic. Lock the center of your PH5-100-L-L into the PM4S3 stacks at the dimension height of the graphic hole. Do not over tighten.



Step 5.

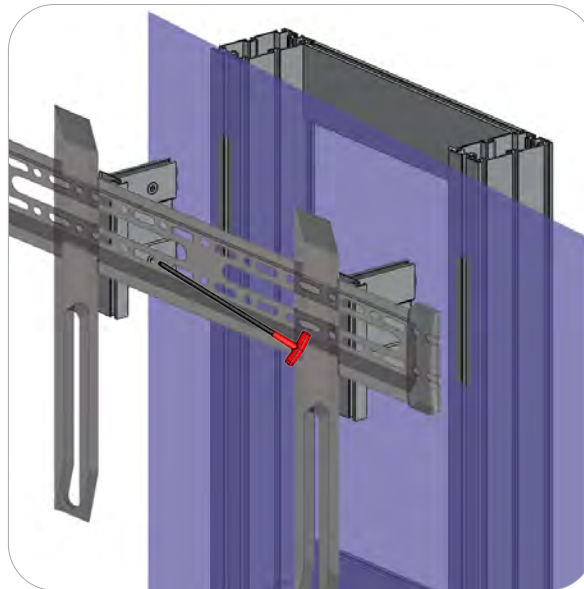
NOTE: Your main backwall assembly must be completed with graphics before completing this step of the monitor kit.

Lock your PM4S4-150 to the ends of the PH5-100-L-L. Do not over tighten.



Step 6.

Set your monitor stand so that the extrusion arms fit through the graphic hole. Use the provided fastening hardware to complete your monitor stand. Slide the LN100 into the bottom center channel of the PM4S4-150. Next, slide the Square Head Bolt into the top center channel of the PM4S4-150. Apply the monitor bracket and spacer washer before fastening with the wingnut. Monitor mount may vary depending on size. Monitor not included.

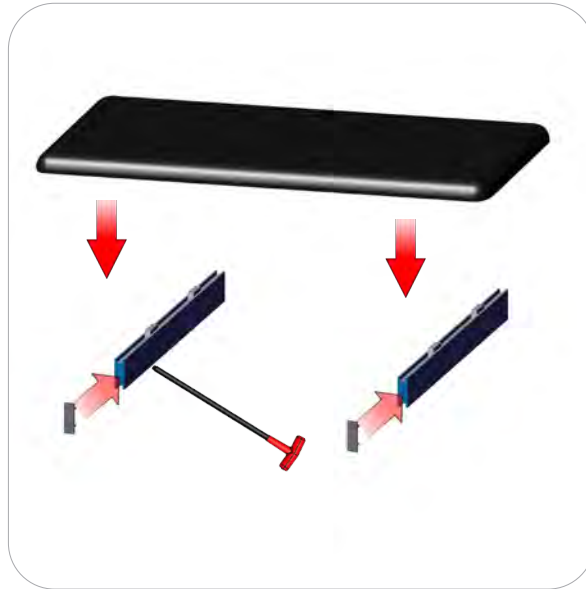


Kit Assembly

Step by Step - Shelf

Step 7.

Insert the LN605-EN end caps. Lock the CT21-MK-SHELF to the PH-400-L-SIDE-MK. Do not over tighten.



Step 8.

Lock your PH-400-L-SIDE-MK into the PM453 stacks at the desired dimension height. Do not over tighten.

Refer to the attached supplemental sheet for details on shelf height(s).

Setup is complete.

Repeat steps 7 and 8 twice more for Shelf Unit.

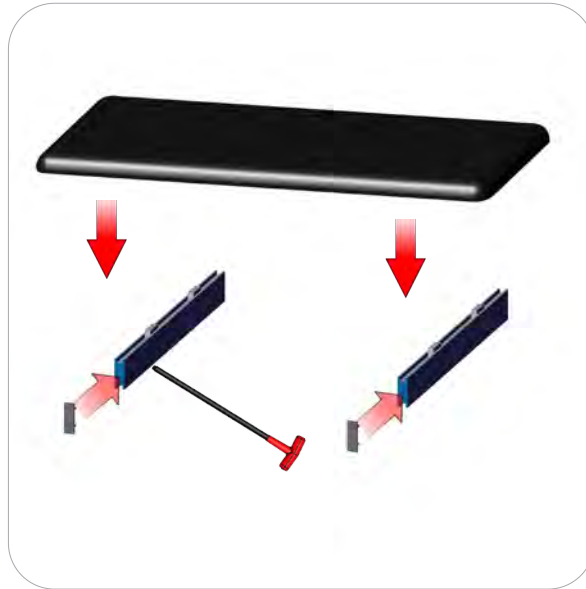


Kit Assembly

Step by Step - Shelf

Step 8.

Insert the LN605-EN end caps. Lock the CT21-MK-SHELF to the PH-400-L-SIDE-MK. Do not over tighten.



Step 7.

Lock your PH-400-L-SIDE-MK into the PM453 stacks at the desired dimension height. Do not over tighten.

Refer to the attached supplemental sheet for details on shelf height(s).

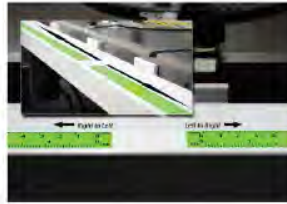
Setup is complete.

Repeat steps 7 and 8 twice more for Shelf Unit.



Location of vinyl adhesive tape
Tape color-**CLEAR**

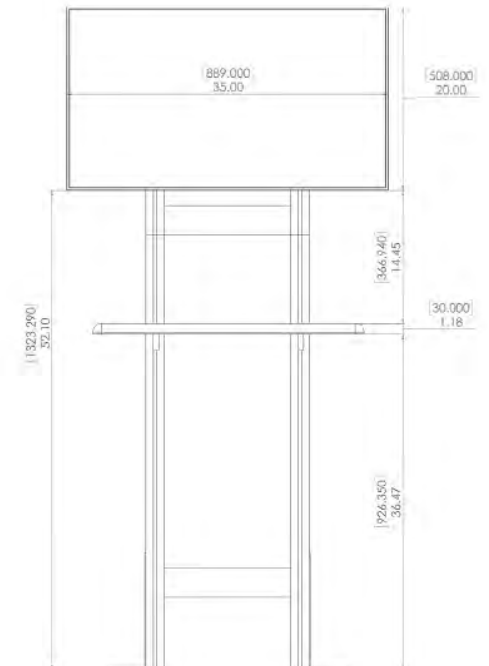
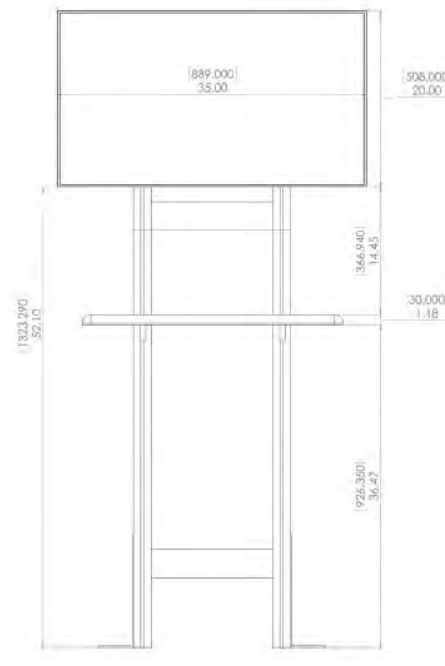
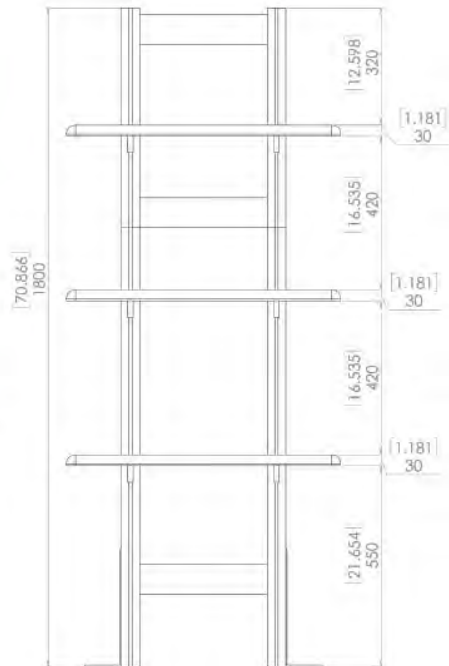
Indicator shown in green to show detail



TORQUATA
Self-Adhesive Measuring
Tape

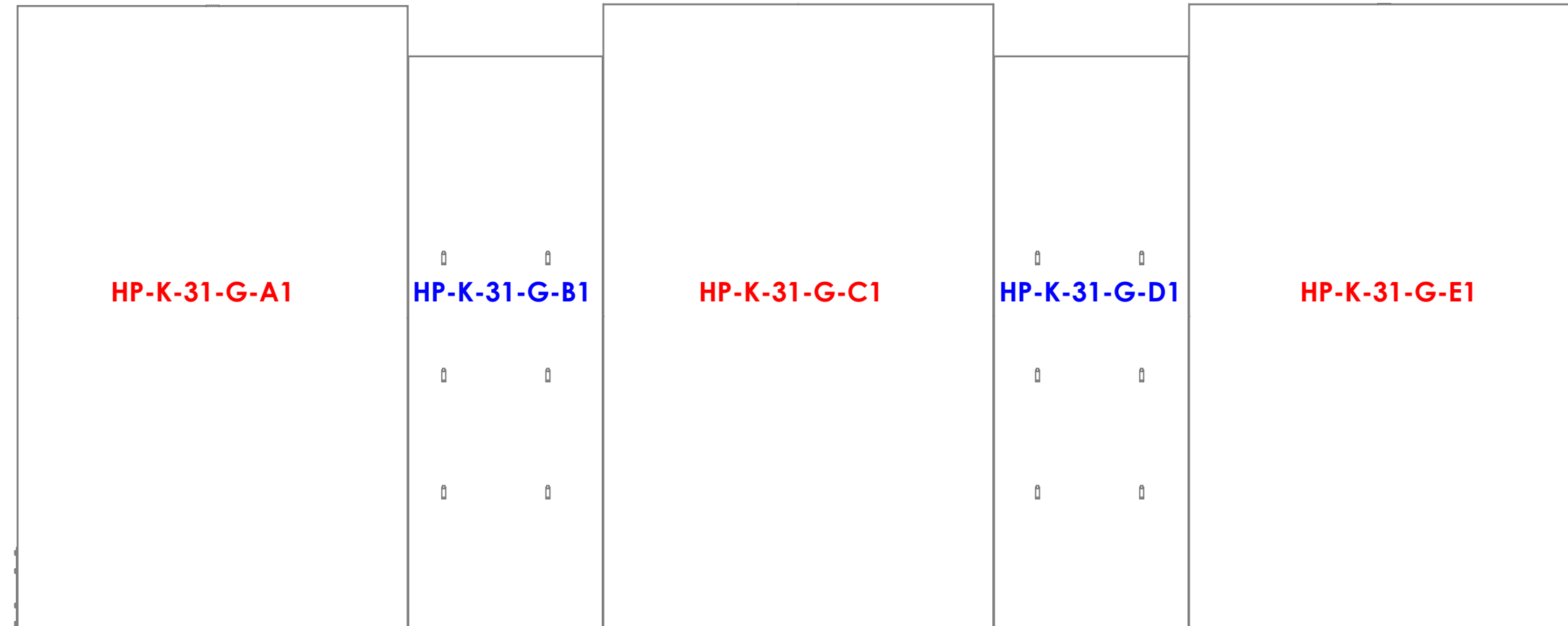
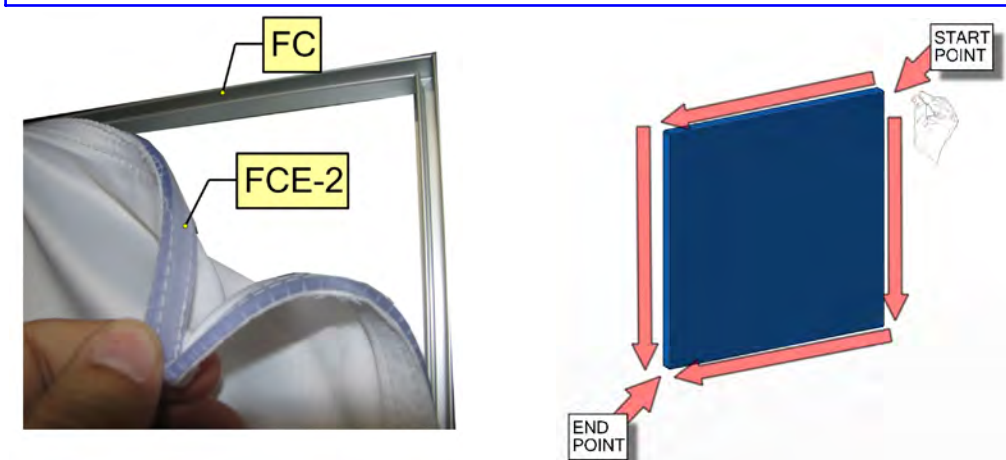
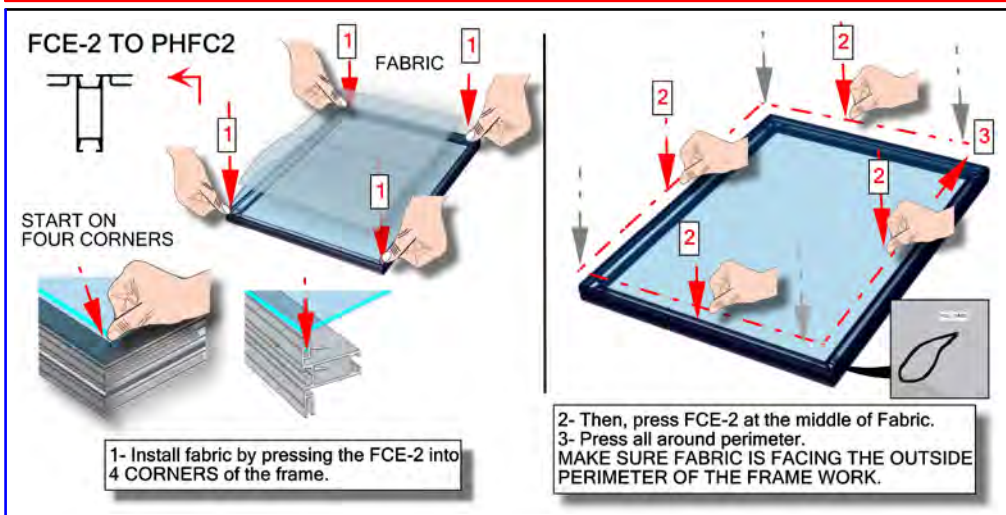
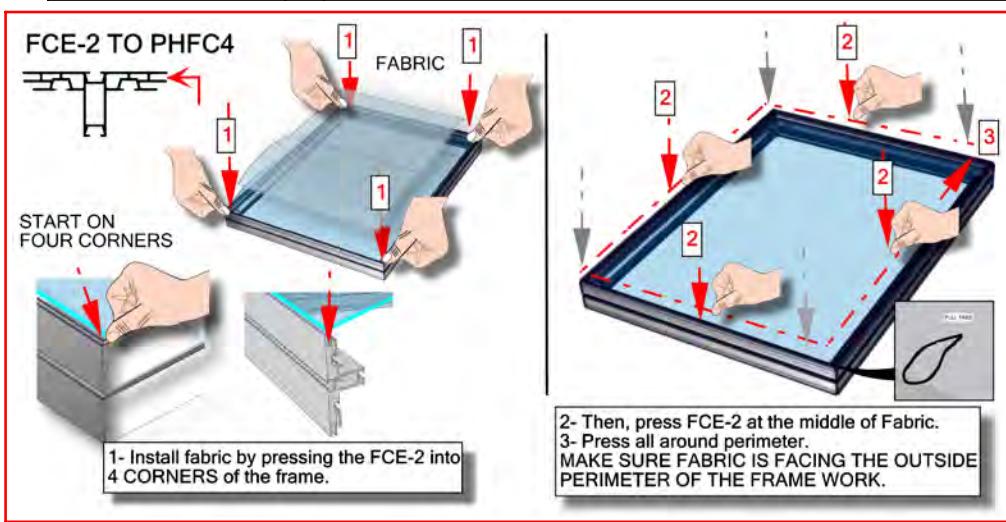


Note: tape comes preattached to extrusion,
0" starts from the bottom (at the floor)

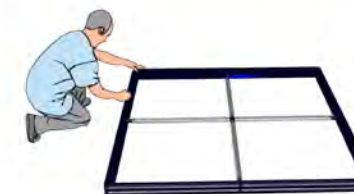


GRAPHICS

Code	#	Description
HP-K-31-G-C1	1	GRAPHIC(C1) 58.94 w X 94.37 h finished size Dye-sub print on 8oz. Power Stretch, with FCE-2 silicone beading sewn to back perimeter, corner pull sewn in bottom right corner
HP-K-31-G-B1	1	GRAPHIC(B1) 29.41 w X 86.5 h finished size Dye-sub print on 8oz. Power Stretch, with FCE-2 silicone beading sewn to back perimeter, corner pull sewn in bottom right corner
HP-K-31-G-D1	1	GRAPHIC(D1) 29.41 w X 86.5 h finished size Dye-sub print on 8oz. Power Stretch, with FCE-2 silicone beading sewn to back perimeter, corner pull sewn in bottom right corner
HP-K-31-G-A1	1	GRAPHIC(A1) 58.94 w X 94.37 h finished size Dye-sub print on 8oz. Power Stretch, with FCE-2 silicone beading sewn to back perimeter, corner pull sewn in bottom right corner
HP-K-31-G-E1	1	GRAPHIC(E1) 58.94 w X 94.37 h finished size Dye-sub print on 8oz. Power Stretch, with FCE-2 silicone beading sewn to back perimeter, corner pull sewn in bottom right corner

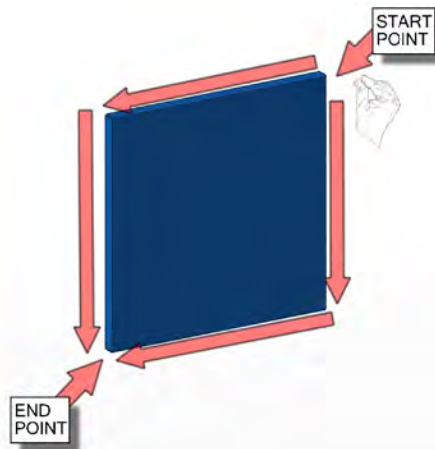
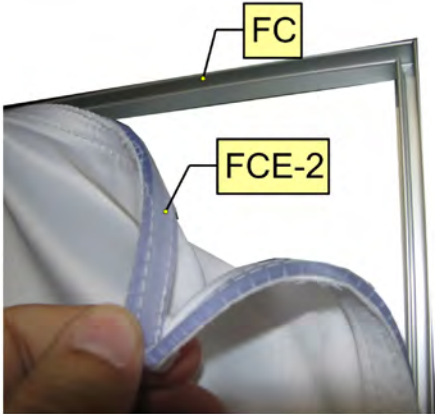
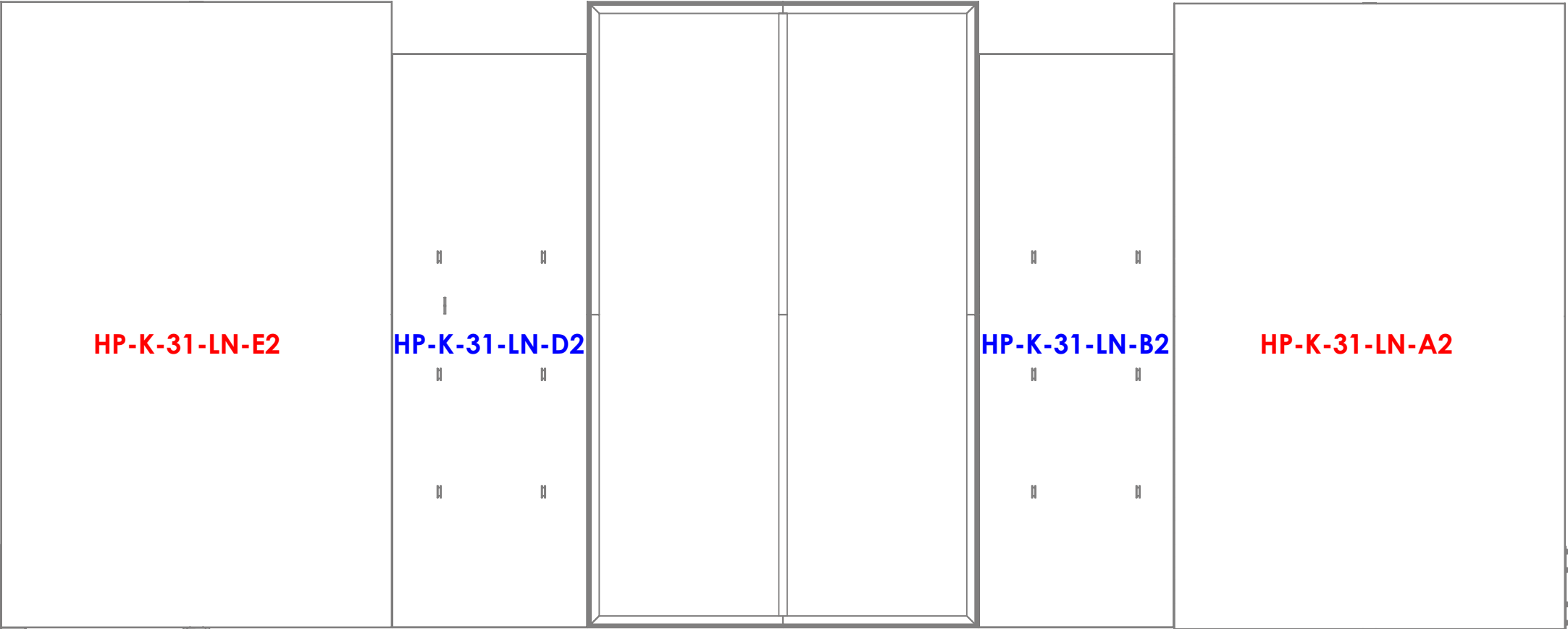
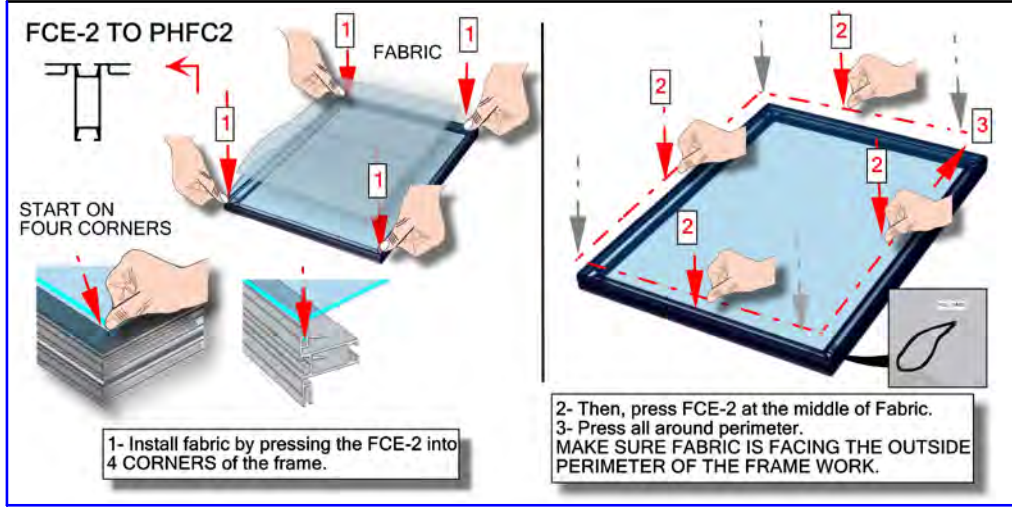
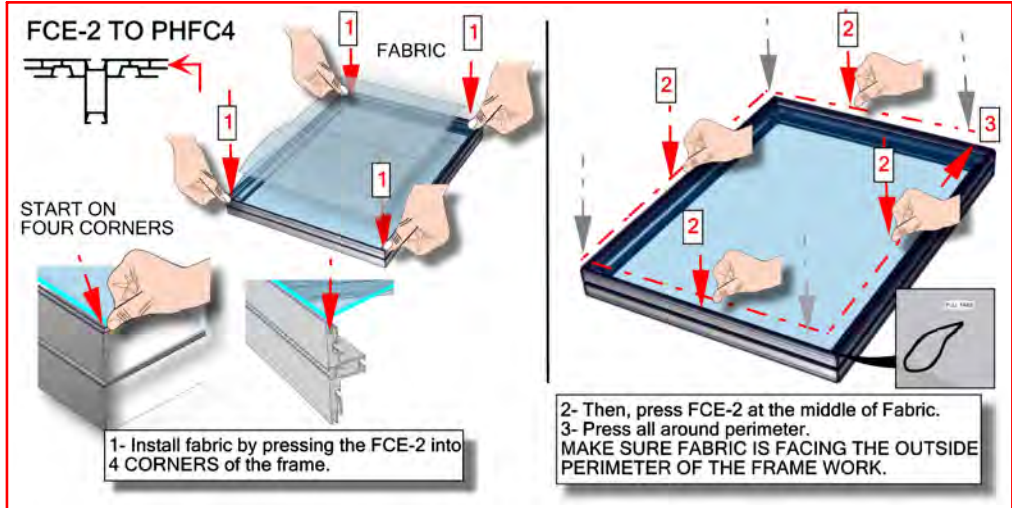


**AFTER THE GRAPHICS ARE INSTALLED
HAVE THREE PEOPLE HELP STAND THE
FRAME UP**



BACK LINER

Code	#	Description
HP-K-31-LN-B2	1	LINER(B2) 29.41 w X 86.5 h finished size Opaque liner, with FCE-2 silicone beading sewn to back perimeter, corner pull sewn in bottom right corner
HP-K-31-LN-D2	1	LINER(D2) 29.41 w X 86.5 h finished size Opaque liner, with FCE-2 silicone beading sewn to back perimeter, corner pull sewn in bottom right corner
HP-K-31-LN-E2	1	LINER(E2) 58.94 w X 94.37 h finished size Opaque liner, with FCE-2 silicone beading sewn to back perimeter, corner pull sewn in bottom right corner
HP-K-31-LN-A2	1	LINER(A2) 58.94 w X 94.37 h finished size Opaque liner, with FCE-2 silicone beading sewn to back perimeter, corner pull sewn in bottom right corner



Code	#	Description
CUS-FABSTR-1	2	350MM X 750MM X 30MM CUSTOM FABRIC SOFFET WITH LED LIGHTS
MM-LG-T	1	LARGE LCD MONITOR MOUNT, 40" - 65" SIZE, 80 LB. MAX. WEIGHT

MONITOR MOUNT AND WOOD SOFFET LED

