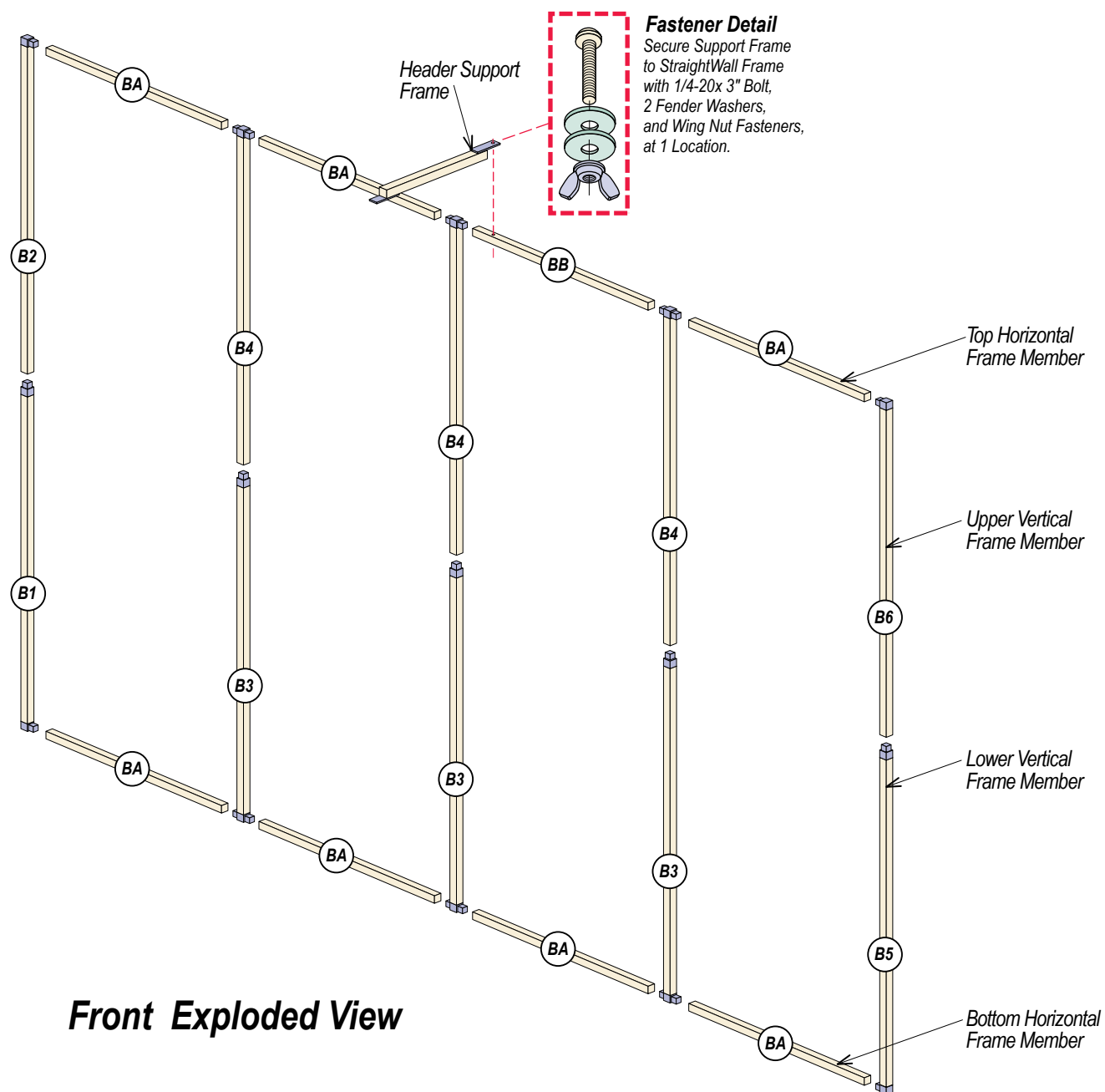


OT-PKG-10

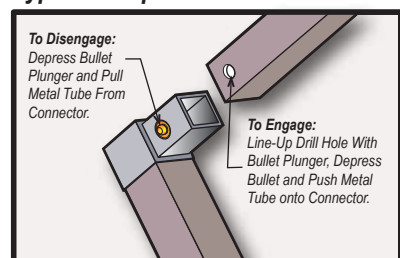


10ft. StraightWall Frame Assembly

1. Assemble the Straightwall Frame. Frame Members connect via Snap-Fit Bullet Connectors. Simply line-up the Frame Holes/Bullet Connectors and push-in to engage. Frame Members are labeled and must be positioned as shown. Velcro on frames should face outward for panel attachment.
2. Attach the Upper Vertical Frames to the Lower Vertical Frames.
3. Connect the Bottom and Top Horizontal Frames to the Vertical Frames to complete the Straight Wall Frame Assembly.



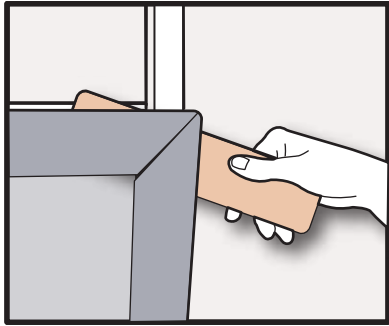
Typical Snap-Fit Bullet Connectors



10ft. Outrigger Panel Assembly

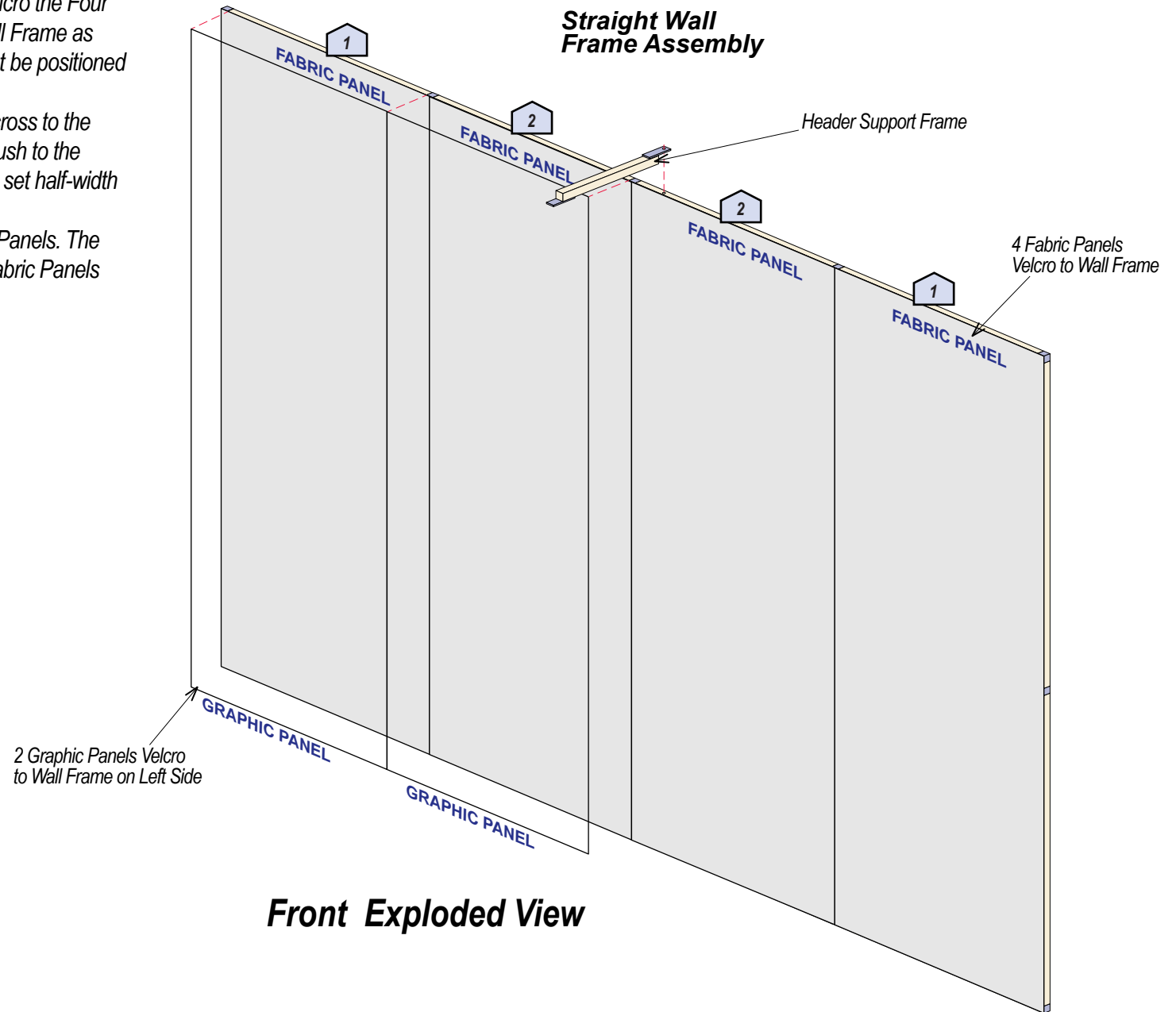
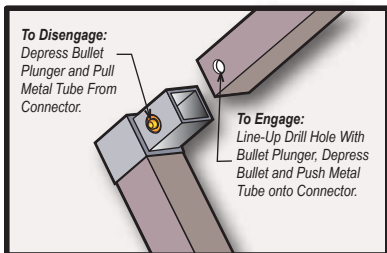
1. With the Straightwall Frame assembled, Velcro the Four Fabric Panels to the assembled Straightwall Frame as shown at right. Panels are labeled and must be positioned where shown.
2. Begin at one end of the Frame and work across to the opposite end. The End Panels should fit flush to the edges of the frame while the Middle Panels set half-width on the Vertical Frames.
3. The Outrigger Frames Velcro to the Fabric Panels. The Graphic Panels Velcro to the Face of the Fabric Panels between the Outrigger Frames.

Separating Velcro Detail



Please note that when removing panels, use a thin tool such as a putty knife to separate the Velcro. Separating the panel Velcro by force can damage the panels.

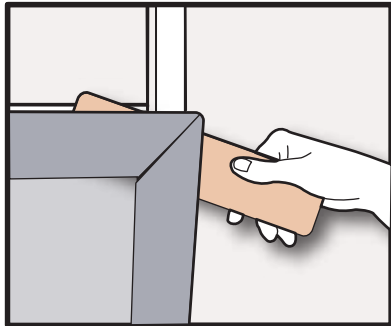
Typical Snap-Fit Bullet Connectors



10ft. Outrigger Frame Assembly

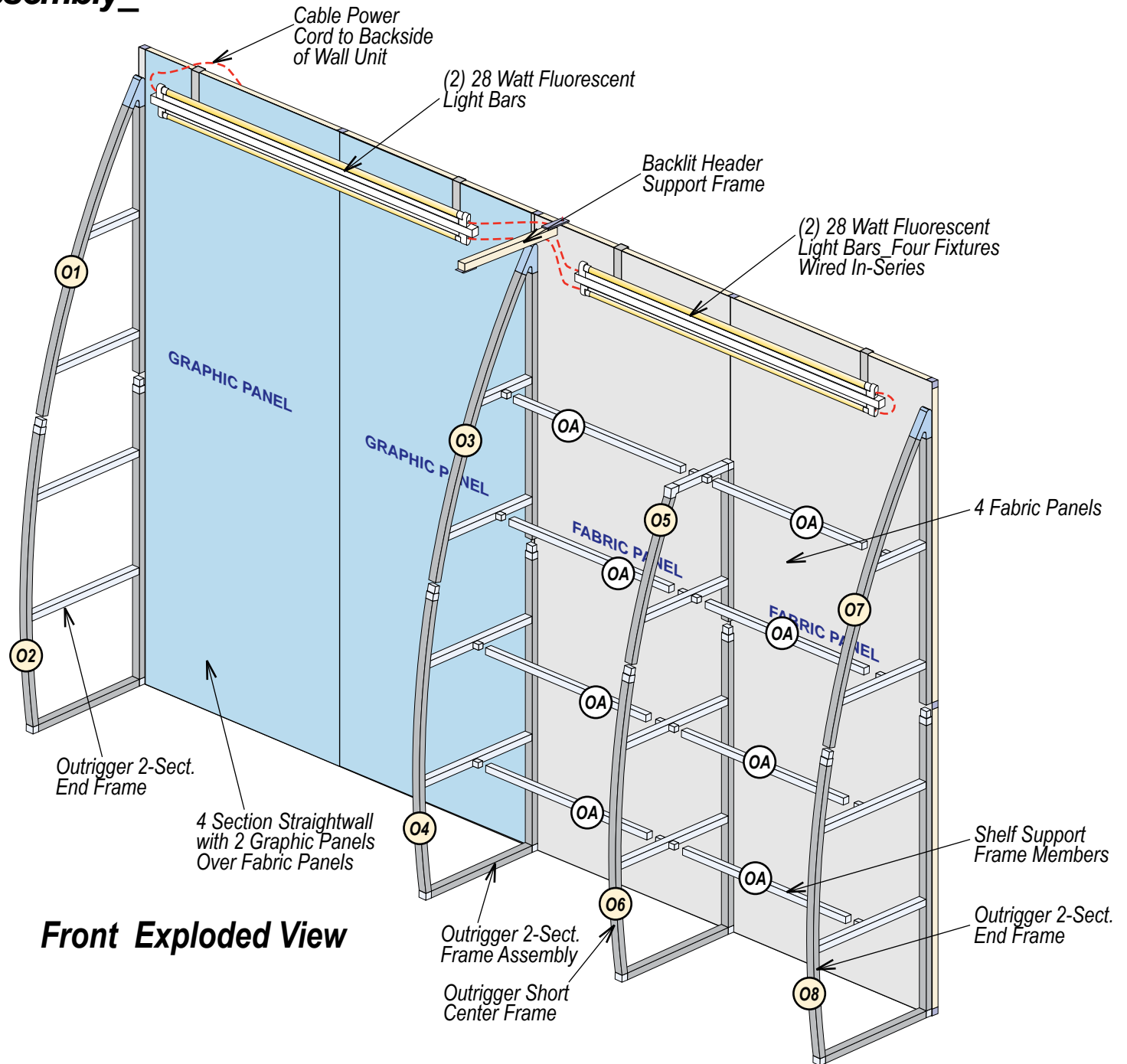
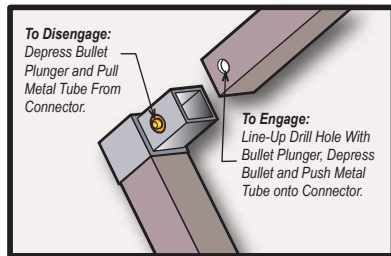
1. All Frame Pieces connect via Snap-Fit Bullet Connectors. Simply line-up the Frame Holes/Bullet Connectors and push-in to engage (refer to detail below). The Frame Members are labeled and must be attached were shown.
2. Assemble the 2 Section Vertical Outrigger Frames. Note that there is an Outrigger Short Center Frame. Then attach the Horizontal Shelf Support Frames to the Outrigger Frames. Outrigger Frames Velcro to the Front of the Assembled Fabric Panels between Graphic Panels.
3. Hang the 2 Fluorescent Light Bars over the Wall Frames. Refer to Fluorescent Light Detail Sheet. Connect all 4 Fixtures in-series then cable power cord to back of Wall Unit.

Separating Velcro Detail



Please note that when removing panels, use a thin tool such as a putty knife to separate the Velcro. Separating the panel Velcro by force can damage the panels.

Typical Snap-Fit Bullet Connectors

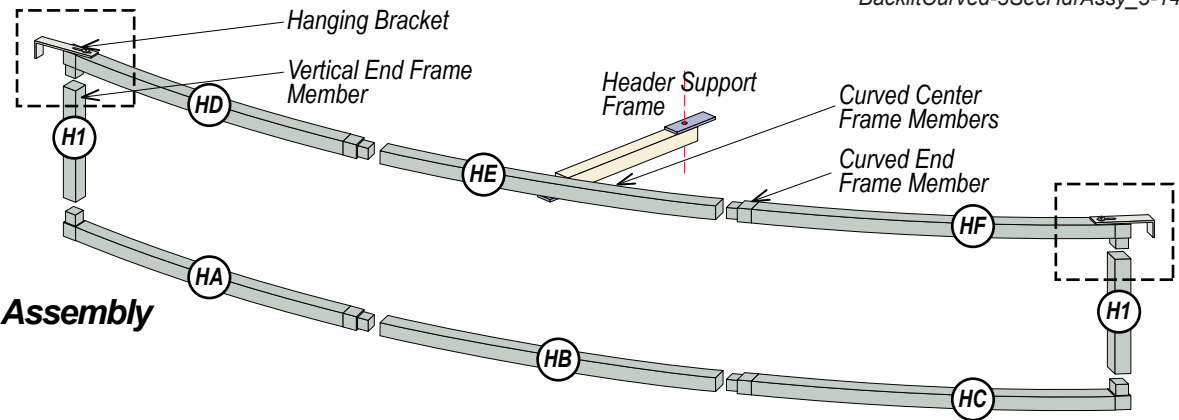


3-Section Backlit Curved Header Assembly

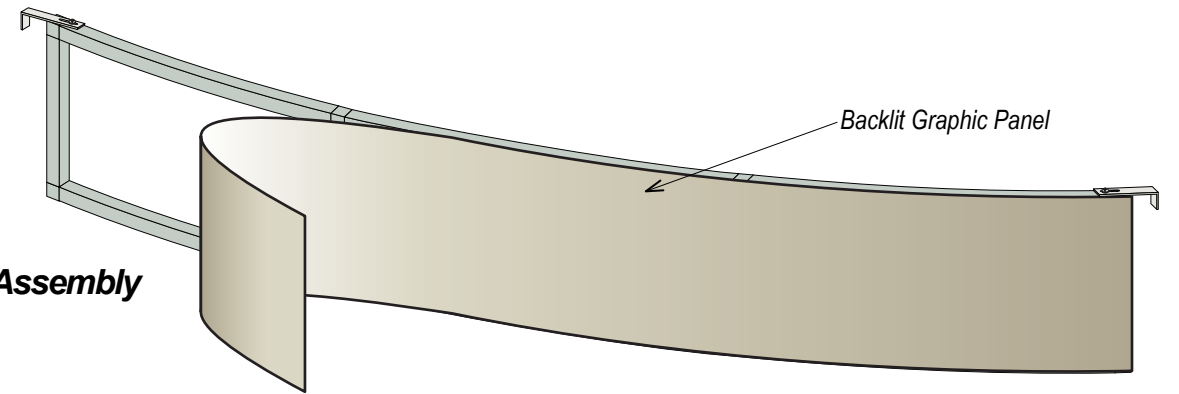
Step-by-Step Assembly

1. Assemble the Backlit Curved Header Frame as shown. Frame Members Connect via Snap-Fit Bullet Connectors. Simply line-up the Frame Holes/Bullet Connectors and push-in to engage. Note that the Frame Members are Labeled and must be positioned as shown.
2. Assemble the 3-piece top and Bottom Horizontal Curved Frames then attach the Vertical End Frames as shown. Note that the Hanging Metal Brackets should be positioned on top at each end. Secure Bracket to Top Frame with fastener detailed and shown at below.
3. Velcro the Backlit Graphic to the front perimeter of the Frame as shown. Begin at one side of the Header Frame and work to the opposite side.
4. Position the Backlit Header between the Outrigger End Frames and hang the Brackets over the Straightwall Unit as shown in the detail Illustration at bottom-right.

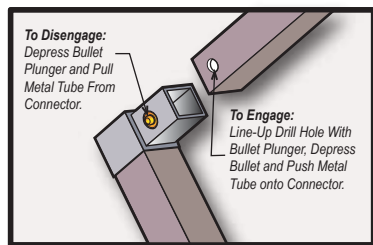
Frame Assembly



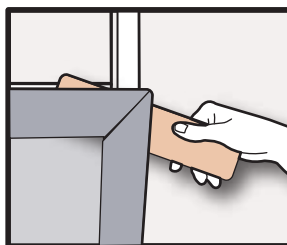
Panel Assembly



Typical Snap-Fit Bullet Connectors



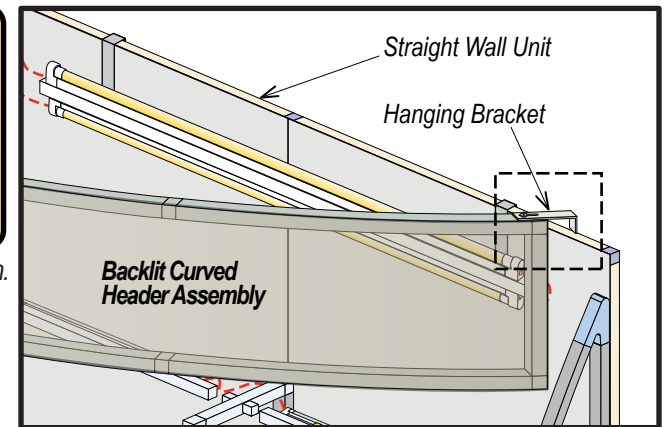
Separating Velcro Detail



Header Hanging Bracket Detail



Hanging Curved Header Assembly

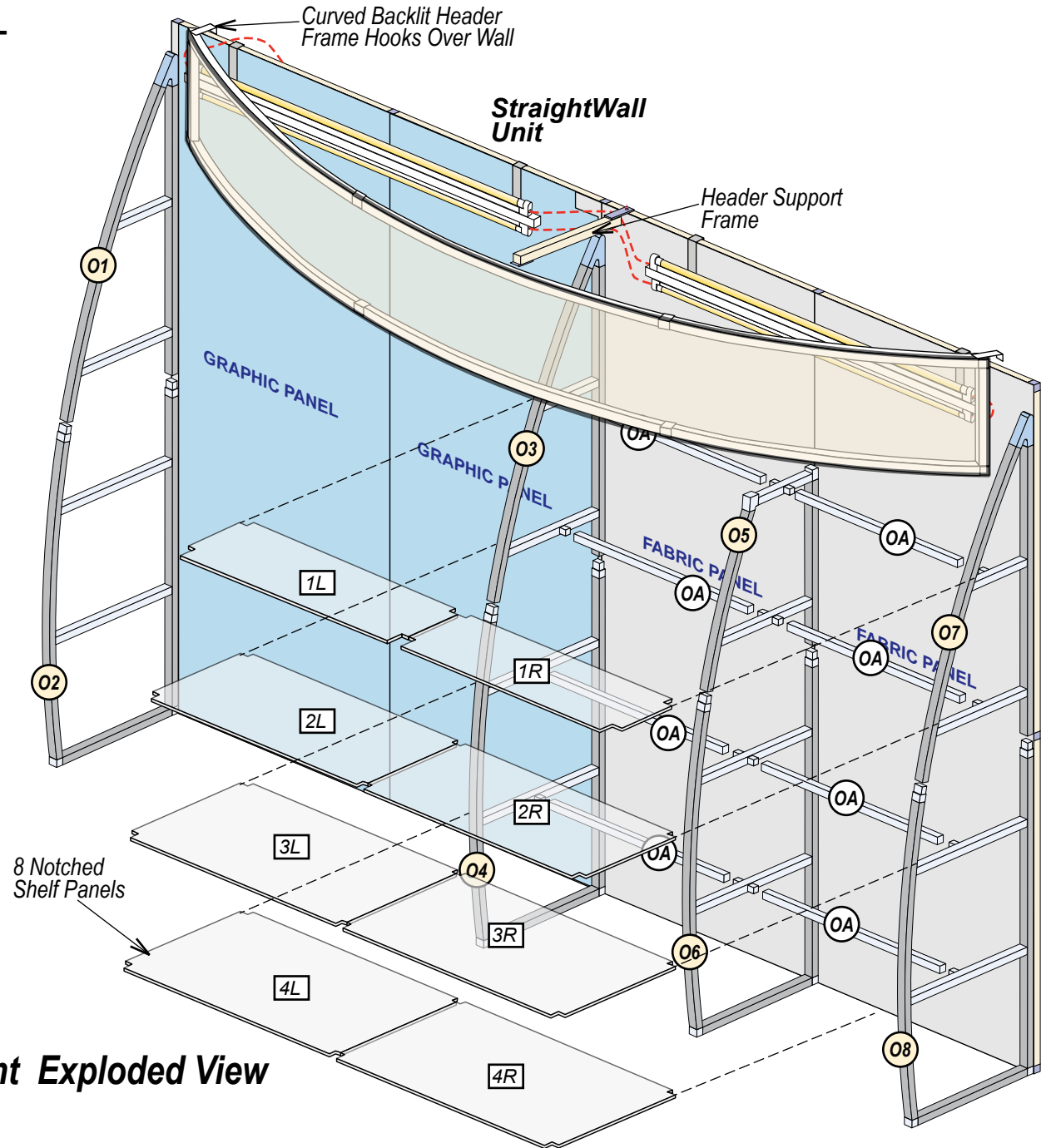


Key to Symbols

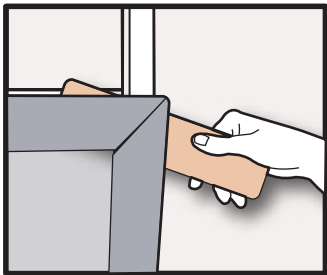
- Represents Frame Member
- Represents Fabric Panels

10ft. Outrigger Shelf Assembly

1. Hang the Metal Hooks on the Curved Header over the Straight Wall Frame. Rest the Top Curved Header Frame onto the Header Support.
2. Install the 8 Notched Shelf Panels to the Outrigger Frames as shown below. Note that the Shelf Panels are labeled and must be positioned as shown.



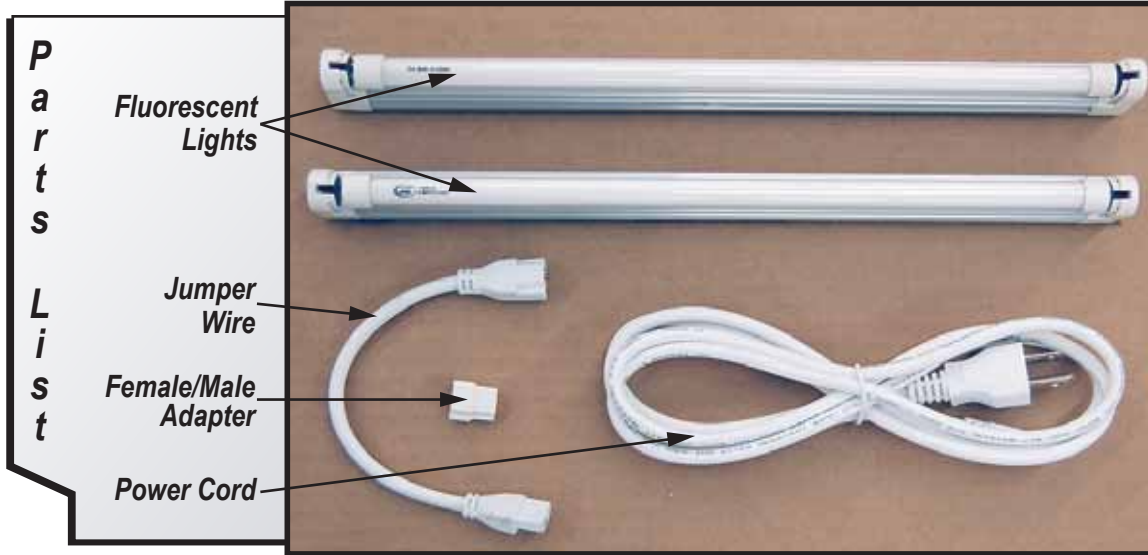
Separating Velcro Detail



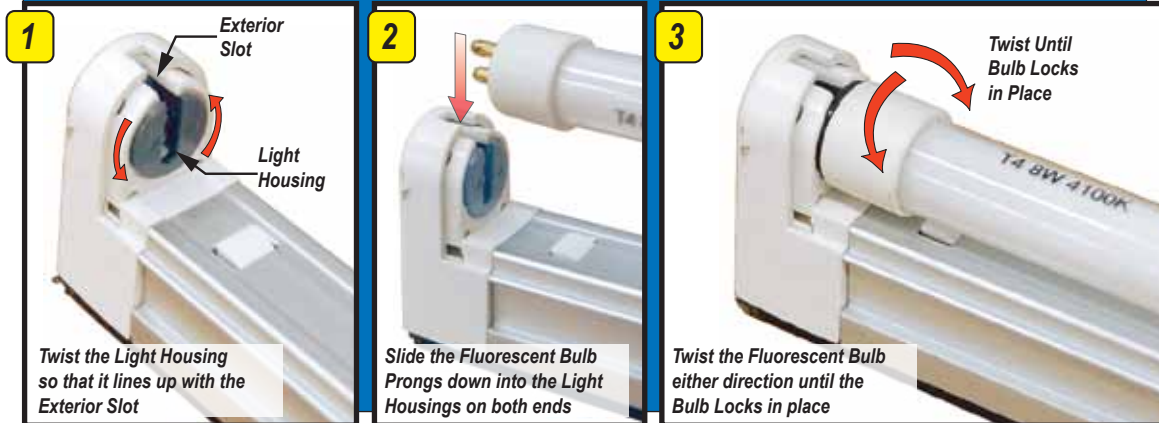
Please note that when removing panels, use a thin tool such as a putty knife to separate the Velcro. Separating the panel Velcro by force can damage the panels.

Front Exploded View

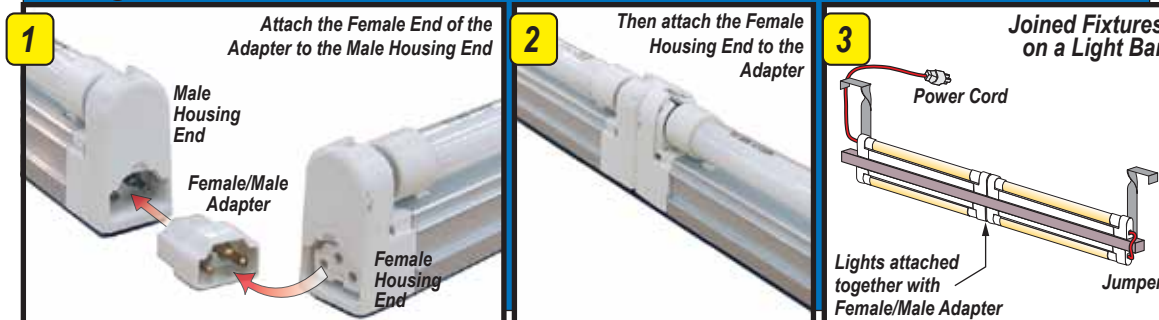
Fluorescent Light Fixture Assembly



Fluorescent Bulb Attachment



Joining Two Fixtures



Using Jumper Wires

