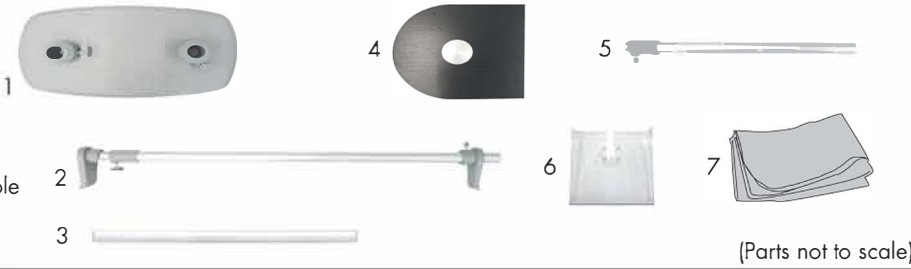


# Banner Stand with Counter

## Product Parts

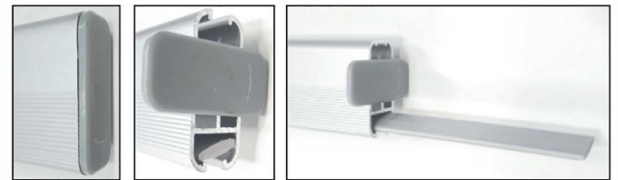
- 1 - Base
- 2 - Telescoping Pole
- 3 - Banner Rail (x2)
- 4 - Table Top
- 5 - Telescoping Table Pole
- 6 - Literature Holder
- 7 - Graphic



## Display Set-Up

### Step 1

On each Banner Rail (3), open one of the ends and slide the Rail's strip out. Peel off the protective film from the strips to expose the adhesive. Press the strips onto the top and bottom of the Graphic (7).



### Step 2

Reinsert the strips into the Banner Rails (3) and close the gray end covers.

### Step 3

Insert the Telescoping Pole (2) into the Base's (1) pole fastener. Tighten the thumb screw on the fastener to secure the pole.



### Step 4

Attach the Graphic (7) with Banner Rails (3) to the Telescoping Pole (2) by fitting each Rail's groove onto the Pole's top and bottom holders.



### Step 6

Insert the Telescoping Table Pole (5) into the Base's (1) remaining pole fastener. Tighten the thumb screw on the fastener to secure the pole.

### Step 7

Clip the Literature Holder (6) to the Telescoping Table Pole (5).

### Step 8

Lower the Table Top (4) onto the Telescoping Table Pole (5) and tighten the thumb screw on its underside to secure its position.



### Step 5

Loosen thumb screws on the Telescoping Pole (2) to adjust the height. Extend it upward until the Graphic (7) is taut, then tighten the thumb screws.

## Storage & Care

To store the graphic, remove it from the Banner Rails and roll it loosely with the strips attached. Store all parts in a cool, dry location. Do not wash the graphic. To clean the hardware, wipe with a damp cloth.