



818-787-1988

allomatic.net

Our AC Slide Gate Operator that started it all.

SL-100 AC

SLIDE GATE OPERATOR

SL-100FP AC

SLIDE GATE OPERATOR



- ✓ For Gates Up To 1,000 Lbs. and 37 Ft. Long
- ✓ Pre-Wired Loop Detector Rack
- ✓ Back Drivable Gearbox
- ✓ Simple & Dependable Control Board



RESIDENTIAL



COMMERCIAL



- ✓ Mechanical Foot Pedal Release



SCAN FOR PRODUCT INFORMATION



SCAN FOR PRODUCT INFORMATION



MECHANICAL FOOT PEDAL RELEASE



INNOVATIVE CIRCUIT BOARD



PAD MOUNT AVAILABLE

SLIDERS | SWINGERS | OVERHEADS

The standard by which all other automatic gate operators are measured.

UL 325 2018 COMPLIANT

UL 991 COMPLIANT

CSA C22.2 #247



ALL-O-MATIC



818-787-1988

allomatic.net

SPECS

SL-100 AC SL-100FP AC

SLIDE GATE OPERATOR



 **Mechanical
Foot Pedal Release**

Max Gate Weight	1,000 lbs.
Max Gate Length	37 feet
Warranty	7 year residential - 5 year commercial
Motor	½ HP motor
Gate Speed	12" per second
Power Options	120 VAC
Duty Cycle	Continuous
Battery Back Up	N/A
Battery Back Up Capacity	N/A
Temperature Range	-40 to 160°
Gearbox Ratio	Regular - 10:1 FP - 20:1 with internal disconnect
Width X Length X Height	12" X 17.5" X 23.5"
Shipping Weight	100 lbs.
Emergency Release	Regular: Push open in event of a power failure FP: Mechanical foot pedal release
Belt Size	Regular: 4L-300 (AX28) FP: 4L-260 (AX24)
Main Sprocket Size	41B22X7/8
Chain Size	41NP (20' included)
Gearbox Sprocket	N/A
Limit Shaft Sprocket	Regular: N/A FP: 41B15X5/8
Breaker Requirement	20 amp dedicated
Gearbox Pulley	Regular: 5" with 5/8" bore FP: 2 ½" with 5/8" bore
Motor Pulley	2" with 5/8" bore
Motor Pulley	N/A

AVAILABLE ACCESSORIES



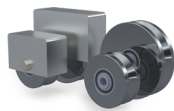
RESIDENTIAL



COMMERCIAL



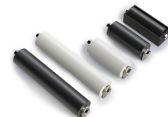
APS-1000
Power Inverter



V-Groove
Wheels



**Fire
Boxes**



GUIDE
Rollers



PRIME VD-1
Loop Detector

The Warrantor warrants the SL-100AC and SL-100FP AC Gate Operators. ALL-O-MATIC INC warrants its gate openers for a period of five (5) years in commercial installations, and for a period of seven (7) years in residential installation to be free from defects in circuitry, motor, gear box and workmanship. This warranty applies from the date of purchase to the original owner. Warrantor will repair or, at its option, replace any device which it finds to require service. This device must be sent to the warrantor at the consumer's expense. The warrantor will return the repaired or replaced unit to the customer at the consumer's expense. Labor charges for dealer service or replacement are the responsibility of the owner. These warranties are in lieu of all other warranties either expressed or implied, and ALL-O-MATIC INC shall not be liable for consequential damage. All implied warranties of merchantability and or fitness for a particular purpose are hereby disclaimed and excluded. This limitation is not valid in jurisdictions which do not allow limitation of incidental or consequential damages or limitation of warranty periods. Caution in order to obtain this policy, please complete the registration card and send it by mail within 30 days of purchasing from ALL-O-MATIC INC. or your INSTALLER. If not registered only a one year warranty on all parts will be provided.

SLIDERS | SWINGERS | OVERHEADS

The standard by which all other automatic gate operators are measured.

UL 325 2018
COMPLIANT

UL 991
COMPLIANT

CSA C22.2 #247

