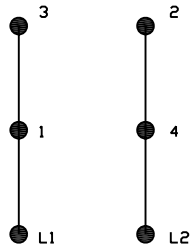
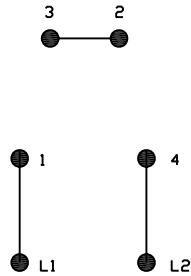


SINGLE PHASE LOW VOLTAGE 110



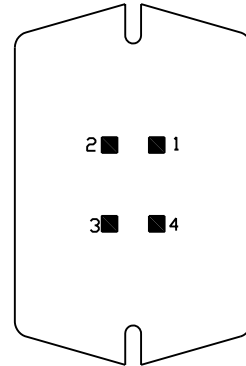
ST

SINGLE PHASE HIGH VOLTAGE 208-230



ST

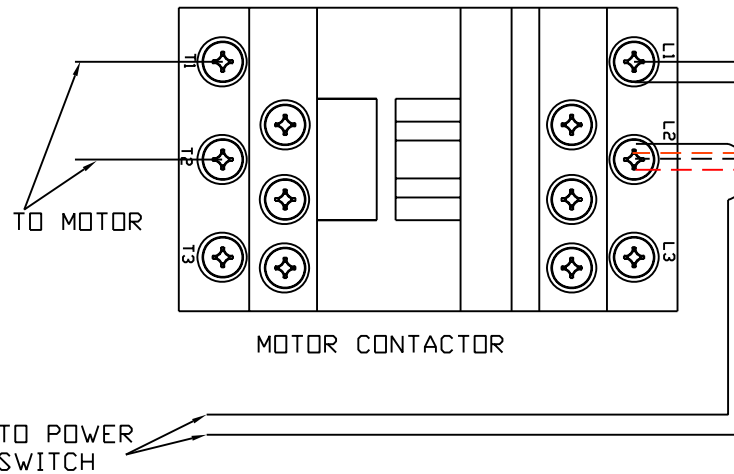
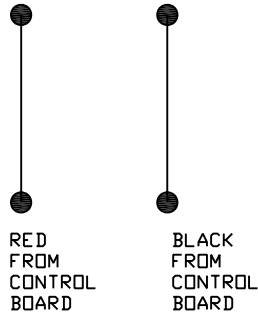
START SWITCH CONNECTIONS
FACTORY SET
SHOULD NOT
REQUIRE CHANGING



ST

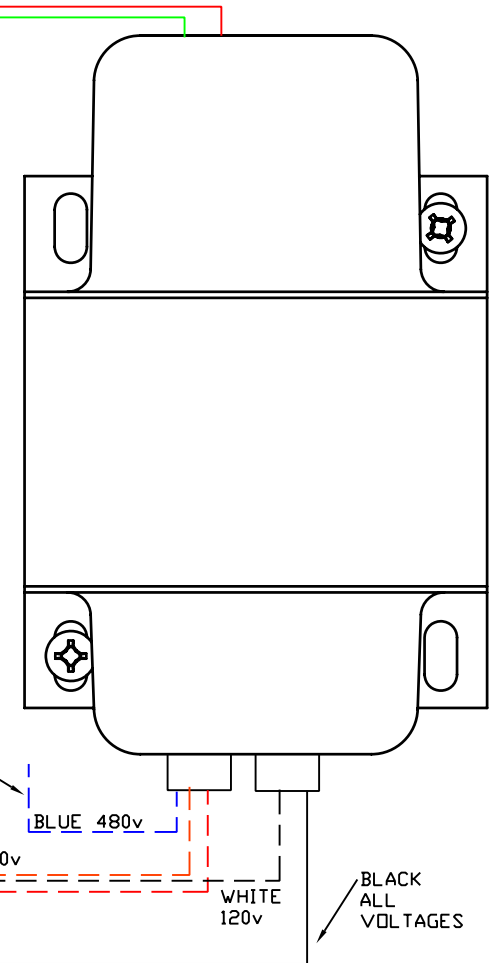
ALL VOLTAGES

18 GA. THERMAL SWITCH WIRES
SPADE CONNECTIONS FROM MOTOR
NON-POLARIZED. ('J' LEADS)



NOT USED ON
SINGLE PHASE
UNITS

TO
CONTROLS
24vAC



CONNECT THE PROPER LEADS FOR
THE VOLTAGE APPLIED TO THE
OPERATOR PER THE DIAGRAM
ABOVE. TAPE UP OR CAP OFF
ALL UNUSED LEADS.



HySecurity Inc. 6623 South 228th St. Kent Wa. 98032-1876
PROPRIETARY INFORMATION OF HY-SECURITY GATE INC.

This document and the information contained herein, are the confidential, proprietary, and trade secret information of Hy-Security Gate Inc. ("Hy-Security") Any party receiving, accepting or retaining this document and any information contained therein solely as may be required to manufacture products or components for Hy-Security and will not provide this document or any information therein to any other party, or use it for any other purpose without the express prior written consent of Hy-Security.

DESCRIPTION SINGLE PHASE
CONNECTION DIAGRAM

PART NO:
MOTOR WIRING DIAGRAMS

SHEET 1 OF 2

ECN NO:
D0012

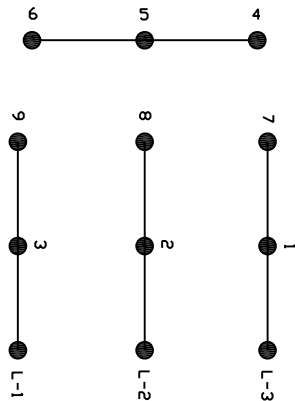
REV

CHANGE DESCRIPTION

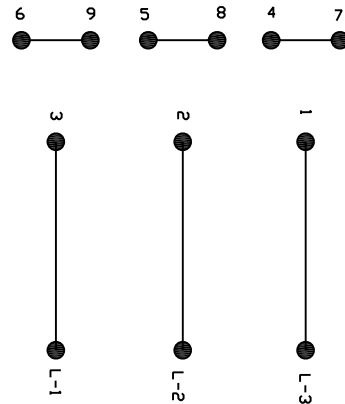
REV BY

REV DATE

THREE PHASE LOW VOLTAGE 208-240

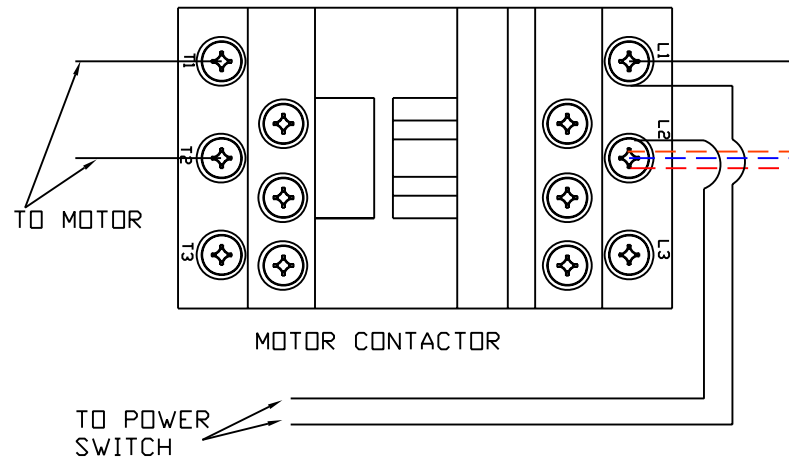
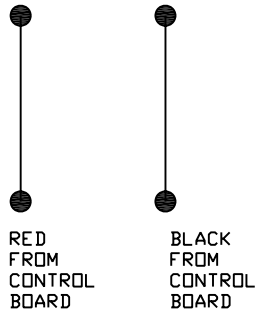


THREE PHASE HIGH VOLTAGE 480

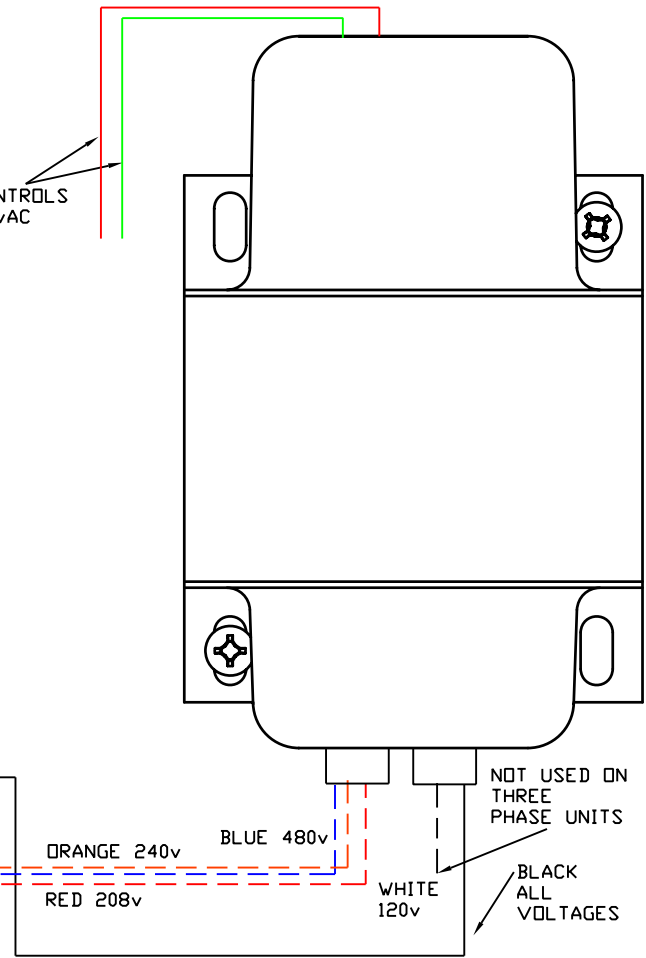


ALL VOLTAGES

18 GA. THERMAL SWITCH WIRES SPADE CONNECTIONS FROM MOTOR NON-POLARIZED. ("J" LEADS)



TO CONTROLS
24vAC



CONNECT THE PROPER LEADS FOR THE VOLTAGE APPLIED TO THE OPERATOR PER THE DIAGRAM ABOVE. TAPE UP OR CAP OFF ALL UNUSED LEADS.



HySecurity Inc. 6623 South 228th St. Kent Wa. 98032-1876
PROPRIETARY INFORMATION OF HY-SECURITY GATE INC.

This document and the information contained herein are the confidential, proprietary, and trade secret information of Hy-Security Gate Inc. ("Hy-Security"). Any party receiving, accepting or retaining this document and any information contained herein solely as may be required to manufacture products or components for Hy-Security and will not provide this document or any information therein to any other party, or use it for any other purpose without the express prior written consent of Hy-Security.

DESCRIPTION **THREE PHASE CONNECTION DIAGRAM**

PART NO: **MOTOR WIRING DIAGRAMS**

SHEET 2 OF 2

ECN NO:
D0012

REV

CHANGE DESCRIPTION

REV BY

REV DATE