

# WIRELESS 2000 Annunciator System

HAND-HELD TRANSMITTER

## TS-10U INSTALLATION INSTRUCTIONS

Please read this manual carefully before installation.

### ① CAUTION

#### 1. Harsh environments

Do not use the TS-10U under severe conditions such as high temperature, rapid temperature change, high humidity, steam or smoke. This may cause the unit to malfunction.

#### 2. Impact/Shock

Impact or Shock can cause severe damage or break the TS-10U.

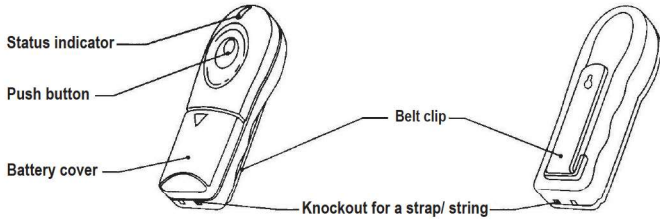
#### 3. Electric Devices

Use the TS-10U at least 3ft (1m) away from any electronic devices such as TVs, Radios, PCs, Microwave ovens or any other devices with an electric motors. This may cause the unit to malfunction.

#### 4. Tampering

Any changes or modifications not expressly approved by OPTEX could void the user's authority to operate the equipment.

### ② PARTS IDENTIFICATION



Note: When you recycle this product, please disassemble product and recycle according to state law.

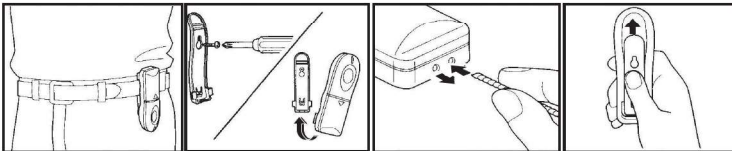
### ④ BATTERY INSTALLATION

- Batteries must be purchased separately (2xAA alkaline batteries).
- Press the arrow mark slightly and slide the battery cover open.
- Insert batteries — observe polarity ( $\pm$  direction).

### ⑤ LOW BATTERY INDICATION

The status indicator will start flashing when the power is low. Please replace the batteries when this occurs.

### ⑥ BELT CLIP & STRAP



#### Belt Clip

Clip on to a belt or pocket as shown in the diagram.

#### Wall mount

The belt clip can be fixed on to a wall. Attach the transmitter to the fastened belt clip.

#### Key chain/ Pendant Type

A strap or a string can be inserted through a knock-out hole for easy carrying.

#### Removing The Belt Clip

Slide the unit in the direction shown in the diagram to detach the belt clip.

### ⑧ TROUBLE SHOOTING

#### 1. The system is not operating.

##### Check the transmitter.

- Are the batteries inserted correctly? → If not, insert the batteries correctly.
- Is the status indicator flashing? → The batteries are old. Replace them.

##### Check the receiver.

- Is the power indicator of the receiver lit? → Is the receiver on? Check the wiring, power switch and connections.
- The receiver does not respond to the TS-10U. → The TS-10U is not properly recognized by the receiver. Teach the receiver correctly.
- The zone indicator of the receiver is on, but nothing happens. → The receiver has not been properly setup. Refer to the receiver's manual and verify the setting.
- Is there anything blocking the transmission? → Relocate the receiver and/ or TS-10U. Metal objects can shorten the effective transmission range.

#### 2. The system is not operating correctly.

- A particular zone is malfunctioning. → This is probably the transmitter's problem. Check the transmitter using this zone.
- Before contacting the supplier! → Remove the battery, then reinsert the same batteries and verify the TS-10U's operation again.

• If the above solutions do not work, please contact your supplier for services.

### ⑪ COMPLIANCE

FCC ID : DC9TS-10U-1

The changes or modifications not expressly approved by the OPTEX could void the user's authority to operate the equipment. To comply with the FCC RF exposure compliance requirements, this device and its antenna must not be co-located or operating in conjunction with any other antenna or transmitter. Note: This equipment has been tested and found to comply with the limits for a Class B Digital Device, pursuant to part 15 of the FCC Rules. These limits are designed to provide reasonable protection against harmful interference in a residential installation. This equipment generates, uses and can radiate radio frequency energy and, if not installed and used in accordance with the instruction, may cause harmful interference to radio communication. However, there is no guarantee that interference will not occur in a particular installation. If this equipment does cause harmful interference to radio or television reception, which can be determined by turning the equipment off and on, the user is encouraged to try to correct the interference by one or more of the following measures: (1) Reorient or relocate the receiving antenna. (2) Increase the separation between the equipment and receiver. (3) Connect the equipment into an outlet on a circuit different from that to which the receiver is connected. (4) Consult the dealer or an experienced radio/TV technician for help.

IC : 4012104524A

Operation is subject to the following two conditions. (1) This device may not cause interference, and (2) this device must accept any interference, including interference that may cause undesired operation of the device. To reduce potential radio interference to other users, the antenna type and its gain should be so chosen that the equivalent isotropically radiated power (e.i.r.p.) is not more than that permitted for successful communication.

### FEATURES

- Compatible with the RC-20U (Chime Box W/Relay), TR-20U (Repeater) and also compatible with any receiver/ repeater units of WIRELESS1000 series.
- Designed for easy grip.
- Belt clip & knock-out for a key-chain/pendant.
- Wall mount option.
- Over 8 million codes possible, eliminates interference from neighbors.
- Powered by 2xAA alkaline batteries (not included).
- Supervised low battery.

### 5. Transmission range

- Transmission range may decrease under the following conditions:
  - Either TS-10U or receiving unit installed on a metal surface.
  - Presence of a steel door, reinforced concrete or other metal obstructions between TS-10U and receiving units.
  - Places near strong radio sources such as broadcast stations or substation.

### 6. Battery replacement

Replace battery every 2 years. Use only AA alkaline battery.

### 7. Cleaning

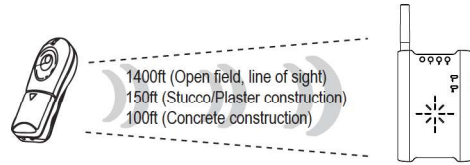
Harsh cleaners such as paint removers or benzene may ruin the surface. Use a soft wet cloth and mild soap to clean.

### ③ TRANSMISSION RANGE (REFERENCE)

Transmission range may change due to the environment.

Please check if system works properly on the site.

In the case of insufficient transmission range, use TR-20U (Repeater unit) to extend range.



TS-10U

Receiver/ Repeater  
RC-20U/ TR-20U

### ⑦ TEACH TRANSMITTER CODES TO THE RECEIVER

The receiver must be taught this transmitter's unique code before use.

Please refer to the receiver's manual on how to teach the transmitter.

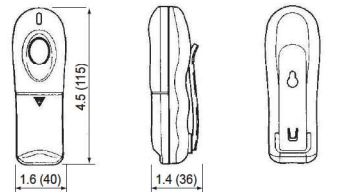
- Prepare the receiver.
  - Select the zone you wish to assign the transmitter.
- Press the push button of the TS-10U.
  - Verify that the receiver has learned successfully by watching the zone indicators of the receiver. The zone indicators should have stopped flashing and remained continuously lit.
- After teaching all the transmitter's codes, if you have multiple transmitters, revert the receiver to normal operating status.
  - Make sure that the receiver operates correctly with all the transmitters.

### ⑨ SPECIFICATIONS

Model	TS-10U
Description	Hand-Held Transmitter
Status Indicator	Red LED
Power Source	3V: 2xAA Alkaline Batteries
Battery Life	2 years [100 times/day at 70°F (20°C)]
Frequency	418MHz
Operating Temp.	15°F ~ 120°F (-10°C ~ +50°C)
Installation Location	Indoors
Weight	1.4oz (40g)

Specifications may change without notice

### ⑩ DIMENSIONS



Unit: inches (mm)

### ⑫ WARRANTY

- This product is warranted under normal use for 2 years from the date of purchase. If the product proves to be defective, return it with a copy of your dated sales receipt for repairs or replacement without charge.
- The warranty is not applicable when below circumstances will be found:
  - Mechanical or electrical modification(s) are made to the product or it is otherwise altered manually.
  - The product is already been serviced at place(s) other than the manufacturer.
  - It is determined that the product malfunction has resulted from improper use or from an accident.
  - No copy of the dated sales receipt has been submitted together with the product to be serviced.



#### OPTEX CO., LTD.

(ISO 9001 Certified)  
(ISO 14001 Certified)  
5-8-12 Ogoto, Otsu, Shiga, 520-0101 Japan  
TEL +81(0)77-579-8670  
FAX +81(0)77-579-8190  
URL <http://www.optex.co.jp/e/>

#### OPTEX INCORPORATED (USA)

13661 Benson Ave., Bldg.C.Chino, CA 91710 U.S.A.  
TEL +1-909-966-783  
FAX +1-909-628-5560  
LOCAL +1-909-993-5770  
URL <http://www.optexamerica.com/>