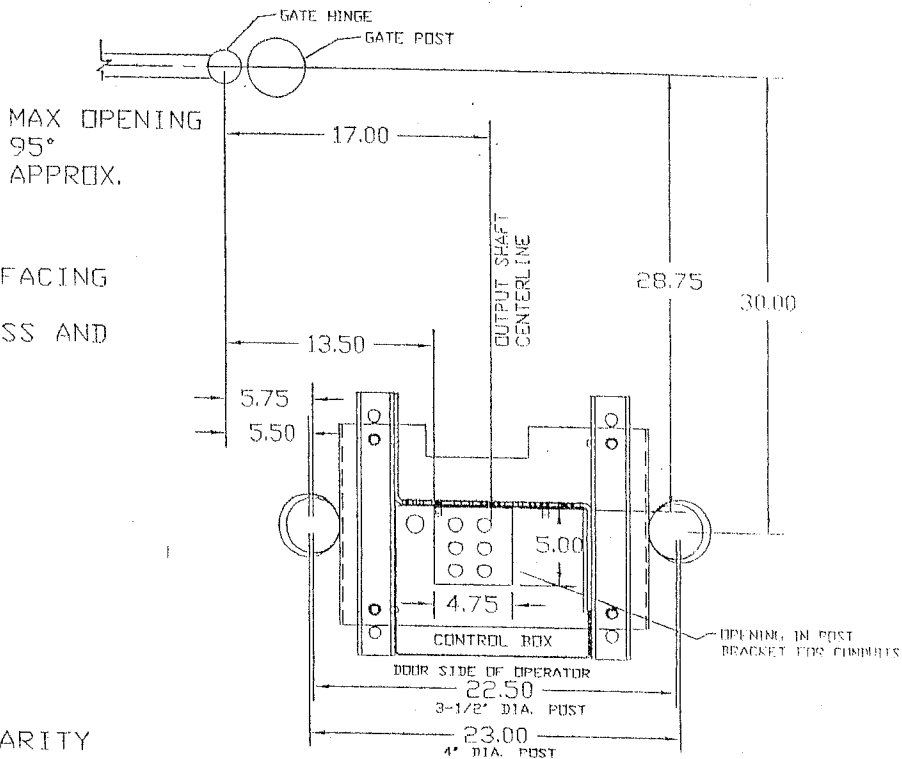


### POST MOUNTING LAYOUT

MOUNT GATE PLATE AT 33' POSITION, SIMILAR TO PAD MOUNTING. REFER TO OPERATOR MANUAL FOR ADDITIONAL DETAILS.



USE OPERATORS MOUNT WITH THE DOOR FACING AWAY FROM THE FENCE LINE. ANY OTHER ORIENTATION MAY CAUSE EXCESSIVE STRESS AND WEAR OF THE POSTS AND HARDWARE.

NOTE: SOME PARTS NOT SHOWN FOR CLARITY

### INSTRUCTIONS FOR MOUNTING OPERATOR USING POST MOUNT KIT:

INSTALL YOUR POSTS USING THE DIMENSIONS SHOWN ABOVE.

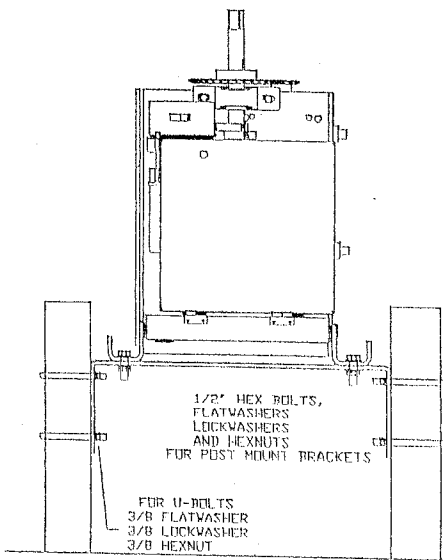
ASSEMBLE THE POST MOUNT BRACKET TO THE POSTS USING U-BOLTS AND 3/8" HARDWARE THAT COMES WITH KIT. FOR YOUR CONVENIENCE, THE KIT SUPPLIES U-BOLTS FOR 3-1/2" OUTSIDE DIAMETER POSTS. THE SLOTS IN THE BRACKETS WILL ALSO ACCOMMODATE 4" OD POSTS.

PLACE THE OPERATOR ON THE POST MOUNT BRACKET AND ASSEMBLE USING 1/2" HARDWARE PROVIDED WITH KIT.

FOR HARMONICS: USING THE WELD STYLE GATE ARM, FOLLOW INSTRUCTIONS FROM THE OPERATOR MANUAL PROVIDED WITH THE ARM TO ADJUST FOR OPERATOR HARMONICS.

FOR HARMONICS: USING THE BOLT TOGETHER STYLE ARM, THE WELD HARMONIC ACTION CAN BE ACHIEVED BY ADJUSTING THE CENTER SET OF CRANK EXTENSION BOLTS.

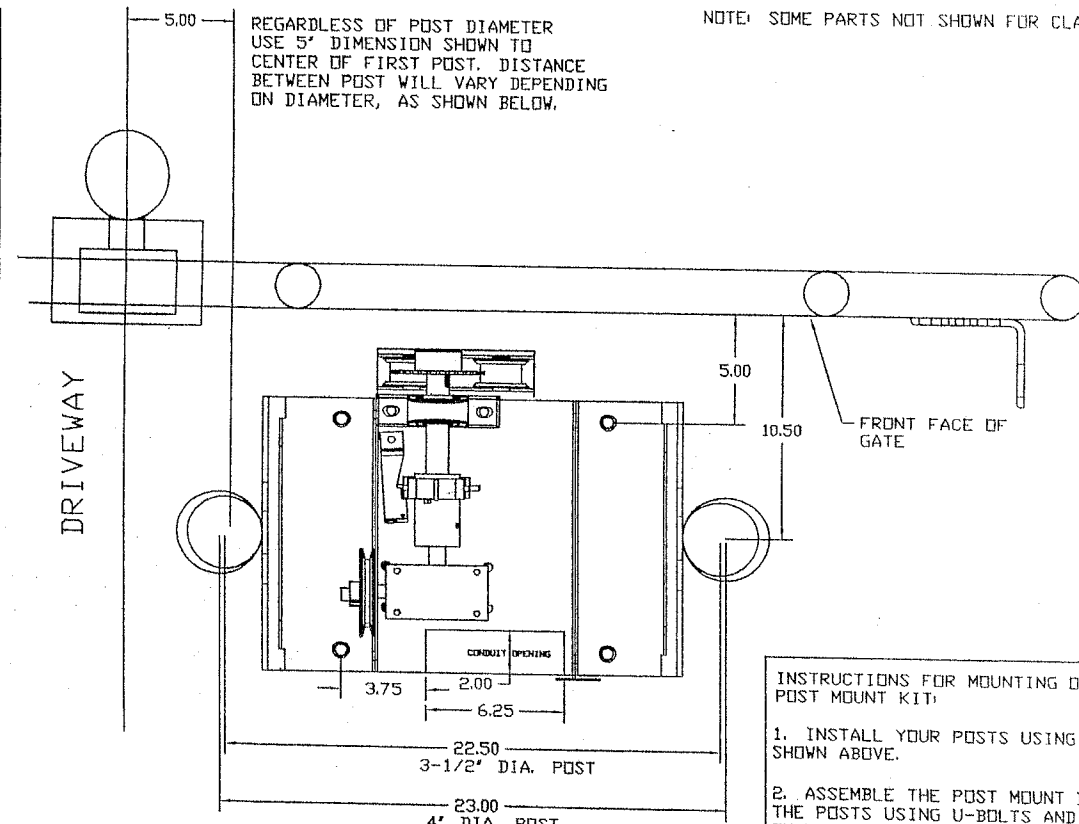
OPENING FOR CONDUITS LOCATED BENEATH DRIVE SHAFT



CODE	DESCRIPTION	DATE	BY
D	REVISED FOR CURRENT KNOCKOUT LOCATIONS	8-31-05	PR
C	REVISED FOR NEW STYLE ARM	8-29-05	PR
B	REMOVED 3" OD POST DIMENSIONS	11-29-04	PR
A	REMOVED ALTERNATE POSITION	4-27-04	PR

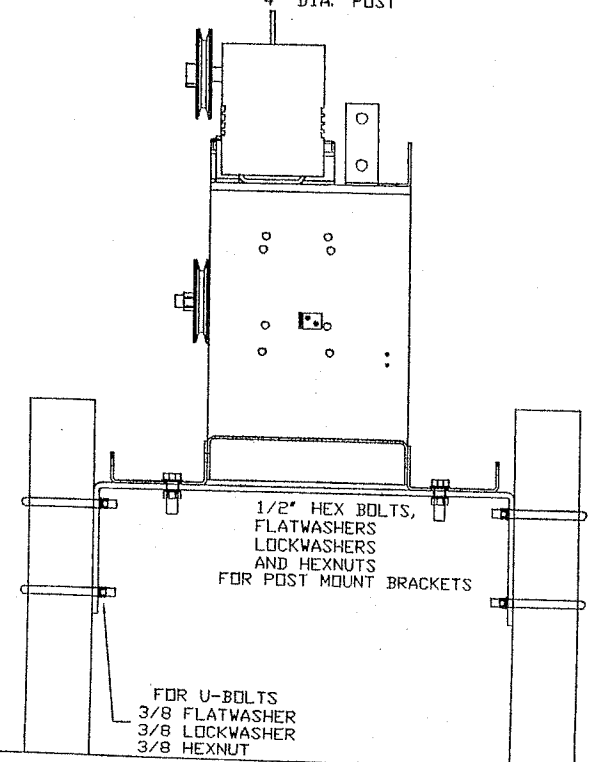
  

UNLESS OTHERWISE SPECIFIED DIMENSIONS ARE IN INCHES TOLERANCES FRACTIONS ± 1/32 DECIMALS ± .01 HOLE PLACES DECIMALS ± .015 HOLE PLACES FRACTIONS ± .005	CUSTOMER	OPERATOR SPECIALTY CO., INC. CASNOVIA, MI 49038 1-800-333-1717 / 416-675-5050
DRAWN	PRIOR	INSTALLATION INSTRUCTIONS FOR OPTIONAL POST MOUNT KIT, 2120-493
DATE	BY	DATE
	PREPARED	PR 1/19/04
	CHECKED	
	APPROVED	
SIZE	ITERM NO.	NO. OF
B		2700 444



**INSTRUCTIONS FOR MOUNTING OPERATOR USING POST MOUNT KIT:**

1. INSTALL YOUR POSTS USING THE DIMENSIONS SHOWN ABOVE.
2. ASSEMBLE THE POST MOUNT BRACKET TO THE POSTS USING U-BOLTS AND 3/8" HARDWARE THAT COMES WITH KIT. FOR YOUR CONVENIENCE, OSCO SUPPLIES U-BOLTS FOR 3-1/2" OUTSIDE DIAMETER POSTS. THE SLOTS IN THE BRACKETS CAN ALSO ACCOMMODATE 4" OD POSTS.
3. PLACE THE OPERATOR ON THE POST MOUNT BRACKET AND ASSEMBLE USING 1/2" HARDWARE SUPPLIED WITH KIT.



CODE	DESCRIPTION	DATE	BY
C	REVISED KNOCKOUT OPENING	8/26/05	PR
B	REMOVED 3" OD POST DIMENSIONS	11/29/04	PR
A	UPDATED FOR SINGLE PIECE STYLE POST MOUNT BRACKET	12/17/03	PR
			RY

UNLESS OTHERWISE SPECIFIED DIMENSIONS ARE IN INCHES TOLERANCES: FRACTIONS ± 1/32 ANGLES ± 1° 2 PLACE DECIMALS ± .015 3 PLACE DECIMALS ± .005	CUSTOMER	OPERATOR SPECIALTY CO., INC CASNOVIA, MI 49318 1-800-333-1717 / 616-675-5050		
	PROJECT	INSTALLATION INSTRUCTIONS FOR OPTIONAL POST MOUNT KIT, 2120-483		
MATL. PRD.	BY	DATE	SIZE	FORMER DWG. NO.
NEXT ASSY.	PREPARED	PR 7/31/03	B	DWG. NO. 2700-438
	CHECKED			
	APPROVED		SCALE	REV. SHEET OF

