

ALL-O-MATIC



818-787-1988

allomatic.net

SW-350 AC

SWING GATE OPERATOR

Our latest **Under Arm AC Swing Gate Operator** designed to preserve a gate's beautiful design.



SW-350 AC

- ✓ For Gates Up To 22 Ft. Long
- ✓ Max Gate Weight
½ HP: 800 lbs.
1 HP: 1,500 lbs.
- ✓ Heavy Duty Gearbox With Internal Clutch
- ✓ Pre-wired Loop Rack
- ✓ Heavy Duty Frame



INDUSTRIAL



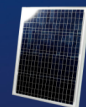
MECHANICAL
FOOT PEDAL
RELEASE



INNOVATIVE
CIRCUIT BOARD



WISE M/S
COMPATIBLE



24VDC SOLAR
POWER OPTION

SLIDERS | SWINGERS | OVERHEADS

The standard by which all other automatic gate operators are measured.

SCAN FOR
PRODUCT
INFORMATION



UL 325 2018
COMPLIANT

UL 991
COMPLIANT

CSA C22.2 #247



ALL-O-MATIC



818-787-1988

allomatic.net

SCAN FOR
PRODUCT
INFORMATION



SW-350 AC

SWING GATE OPERATOR

SPECS

Max Gate Weight ½ HP: 800 lbs.

1 HP: 1,500 lbs.

Max Gate Length 22 feet

Warranty 7 year residential - 5 year commercial

Motor ½ HP and 1 HP motor

Gate Speed 19 seconds per 90° opening

Power Options 120 VAC

Duty Cycle Continuous

Battery Back Up N/A

Battery Back Up Capacity N/A

Temperature Range -40 to 160°

Gearbox Ratio 60:1 with internal clutch

Width X Length X Height 14" X 24" X 18"

Shipping Weight 125 lbs. + 35 lbs. arm

Emergency Release Mechanical foot pedal release

Belt Size 4L-400 (AX38)

Main Sprocket Size 40B54X1.25

Chain Size 40NP

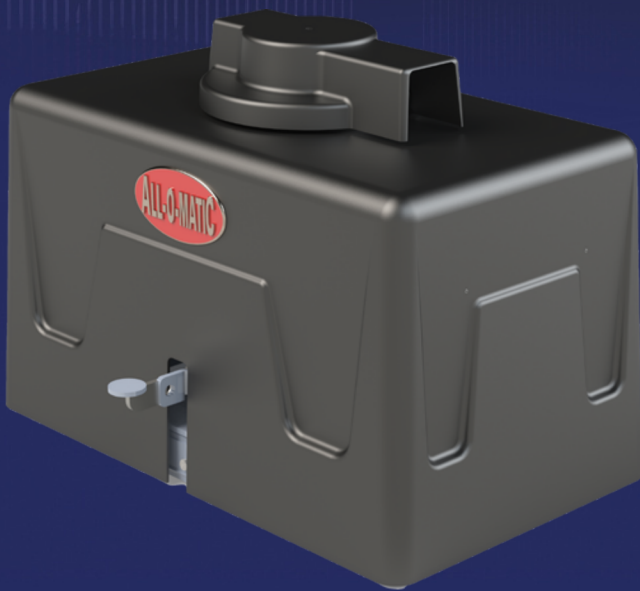
Gearbox Sprocket 40B12X1

Limit Shaft Sprocket N/A

Breaker Requirement 20 amp dedicated

Gearbox Pulley 7" with 3/4" bore

Motor Pulley 2" with 5/8" bore



INDUSTRIAL

AVAILABLE ACCESSORIES



AML-1200B
Mag Lock



GH-1500
Hinges



Fire
Boxes



Solar
Panel



PRIME VD-1
Loop Detector

The Warrantor warrants the SW-320DC Gate Operator. ALL-O-MATIC INC warrants its gate openers for a period of five (3) years in commercial installations, and for a period of seven (5) years in residential installation to be free from defects in circuitry, motor, gear box and workmanship. This warranty applies from the date of purchase to the original owner. Warrantor will repair or, at its option, replace any device which it finds to require service. This device must be sent to the warrantor at the consumer's expense. The warrantor will return the repaired or replaced unit to the customer at the consumer's expense. Labor charges for dealer service or replacement are the responsibility of the owner. These warranties are in lieu of all other warranties either expressed or implied, and ALL-O-MATIC INC shall not be liable for consequential damage. All implied warranties of merchantability and or fitness for a particular purpose are hereby disclaimed and excluded. This limitation is not valid in jurisdictions which do not allow limitation of incidental or consequential damages or limitation of warranty periods. Caution in order to obtain this policy, please complete the registration card and send it by mail within 30 days of purchasing from ALL-O-MATIC INC. or your INSTALLER. If not registered only a one year warranty on all parts will be provided.

SLIDERS | SWINGERS | OVERHEADS

The standard by which all other automatic gate operators are measured.

UL 325 2018
COMPLIANT

UL 991
COMPLIANT

CSA C22.2 #247

