

# ENFORCER®

## Open-Frame Transformers

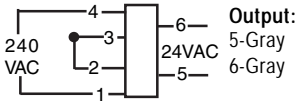
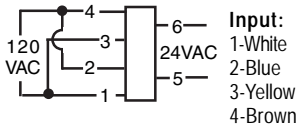
- ST-UV16-W50Q – Open-Frame Transformer, 16VAC, 50W
- ST-UV24-W50Q – Open-Frame Transformer, 24VAC, 50W
- ST-UV16-W100Q – Open-Frame Transformer, 16VAC, 100W
- ST-UV24-W100Q – Open-Frame Transformer, 24VAC, 100W
- ST-UVDA-W100Q – Open-Frame Transformer, 24/28VAC, 100W\*
- ST-UVDA-W180Q – Open-Frame Transformer, 24/28VAC, 180W\*

\*Dual Voltage output: 24VAC or 28VAC

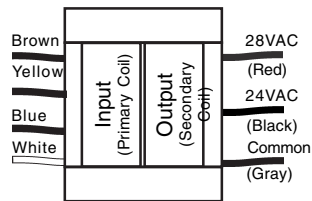
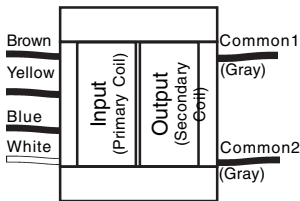
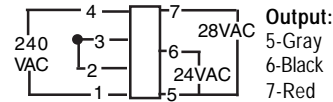
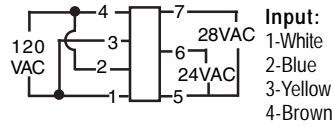
### Wiring Diagrams:

How to wire the transformer depends on input voltage.  
Determine input voltage using Volt/Ohm meter before wiring input wires.

**ST-UV16-W50Q**  
**ST-UV16-W100Q**  
**ST-UV24-W100Q**  
**ST-UV24-W50Q**



**ST-UVDA-W100Q**  
**ST-UVDA-W180Q**



Note: Cap unused wire to avoid shorting wires.

### Specifications:

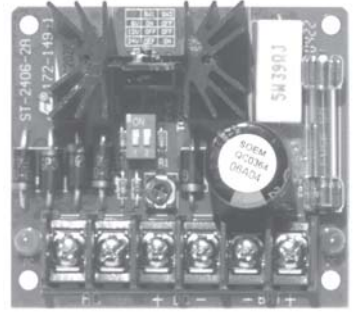
Model	Output Voltage	Amperage	VA	Input Voltage
ST-UV16-W50Q	16VAC	3.0	50VA	120VAC or 240VAC 50/60Hz
ST-UV24-W50Q	24VAC	2.0	50VA	
ST-UV16-W100Q	16VAC	6.0	100VA	
ST-UV24-W100Q	24VAC	4.0	100VA	
ST-UVDA-W100Q	24VAC	4.0	100VA	
	28VAC	3.0	100VA	
ST-UVDA-W180Q	24VAC	7.0	180VA	
	28VAC	6.0	180VA	

# Match the ENFORCER Open-Frame Transformers with the ENFORCER Series Power Supply/Chargers

- ST-1206-1.5AQ 1.5A continuous. 6/12 VDC
- ST-2406-2AQ 1.5A continuous. 6/12/24 VDC
- ST-2406-3AQ 2.5A continuous. 6/12/24 VDC
- ST-2406-5AQ 4.0A continuous. 6/12/24 VDC
- ST-2406-7AQ 7.0A continuous. 6/12/24 VDC
- ST-2406-10AQ 9.0A continuous. 6/12/24 VDC

Convert low-voltage AC input power to low-voltage DC output power.

- Regulated and filtered output voltage.
- Short-circuit protection.
- Thermal protection and compensation.
- Built-in backup battery charger.
- Switches to backup battery automatically in case of power loss.
- Fused protection for battery charger.
- 2 LEDs to indicate AC power input and DC power output status.
- Compatible with lead acid or gel-type rechargeable battery.
- Reverse polarity protected.



Output Voltage:	ST-2406-2AQ	ST-2406-3AQ	ST-2406-5AQ	ST-2406-7AQ	ST-2406-10AQ
6VDC	12VAC/20VA	<b>ST-UV16-W50Q</b> <b>ST-UV24-W50Q</b>	<b>ST-UV16-W100Q</b> 16VAC/100VA	<b>ST-UVDA-W180Q</b> 24-28VAC/180VA	<b>ST-UVDA-W180Q</b> 24-28VAC/180VA
12VDC	<b>ST-UV16-W50Q</b> 16VAC/50VA	<b>ST-UV16-W50Q</b> 16VAC/50VA	<b>ST-UV16-W100Q</b> 16VAC/100VA	<b>ST-UVDA-W180Q</b> 24-28VAC/180VA	<b>ST-UVDA-W180Q</b> 24-28VAC/180VA
24VDC	<b>ST-UV24-W50Q</b> 24VAC/50VA	<b>ST-UVDA-W100Q</b> 24-28VAC/100VA	<b>ST-UVDA-W180Q</b> 24-28VAC/180VA	24-28VAC/210VA	N/A

**WARRANTY:** This SECO-LARM product is warranted against defects in material and workmanship while used in normal service for a period of one (1) year from the date of sale to the original consumer customer. SECO-LARM's obligation is limited to the repair or replacement of any defective part if the unit is returned, transportation prepaid, to SECO-LARM.

This Warranty is void if damage is caused by or attributed to acts of God, physical or electrical misuse or abuse, neglect, repair, or alteration, improper or abnormal usage, or faulty installation, or if for any other reason SECO-LARM determines that such equipment is not operating properly as a result of causes other than defects in material and workmanship.

The sole obligation of SECO-LARM, and the purchaser's exclusive remedy, shall be limited to replacement or repair only, at SECO-LARM's option. In no event shall SECO-LARM be liable for any special, collateral, incidental, or consequential personal or property damages of any kind to the purchaser or anyone else.

**NOTICE:** The information and specifications printed in this manual are current at the time of publication. However, the SECO-LARM policy is one of continual development and improvement. For this reason, SECO-LARM reserves the right to change specifications without notice. SECO-LARM is also not responsible for misprints or typographical errors.

Copyright © 2015 SECO-LARM U.S.A., Inc. All rights reserved. This material may not be reproduced or copied, in whole or in part, without the written permission of SECO-LARM.

## SECO-LARM U.S.A., Inc.

16842 Millikan Avenue, Irvine, CA 92606  
 Tel: 800-662-0800 / 949-261-2999 Fax: 949-261-7326  
 Website: [www.seco-larm.com](http://www.seco-larm.com)  
 E-mail: [sales@seco-larm.com](mailto:sales@seco-larm.com)

 UL recognized component

 RoHS Compliant

MIST-UVVx-WxxxQ\_150408.pmd

 PITCW2 / PITDW1