

# ALL-O-MATIC®



818-787-1988

allomatic.net

## OH-200 DC

OVERHEAD GATE OPERATOR

Our **Overhead DC Gate Operator** was the first commercial overhead gate operator with Brushless DC Motor.



### OH-200 DC

- ✔ For Gates Up To 800 Lbs. and 20 Ft. Long
- ✔ Only Manufacturer of Jamb Track Hardware Used on Commercial Overhead Gates
- ✔ Most Dependable Control Board in the Industry
- ✔ Powerful Motor, Field Tested for Over 20 Years



COMMERCIAL



QUICK ARM RELEASE



INNOVATIVE  
CIRCUIT BOARD



PRE-WIRED LOOP RACK



JAMB TRACK HARDWARE

**SLIDERS | SWINGERS | OVERHEADS**

The standard by which all other automatic gate operators are measured.

SCAN FOR  
PRODUCT  
INFORMATION



UL 325 2018  
COMPLIANT

UL 991  
COMPLIANT

CSA C22.2 #247



# ALL-O-MATIC



818-787-1988

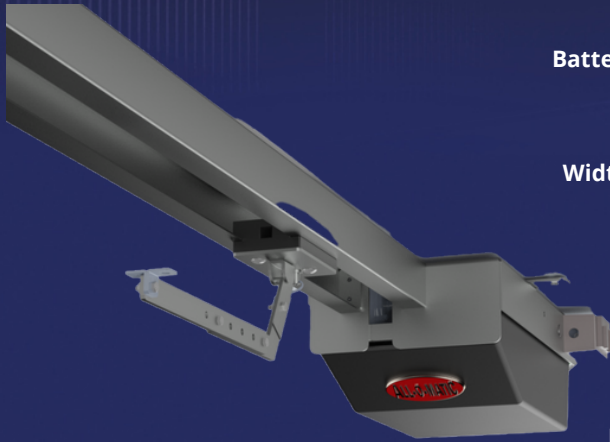
allomatic.net



SCAN FOR  
PRODUCT  
INFORMATION

## OH-200 DC

### OVERHEAD GATE OPERATOR



## SPECS

<b>Max Gate Weight</b>	800 lbs.
<b>Max Gate Length</b>	20 feet
<b>Warranty</b>	5 year commercial
<b>Motor</b>	½ HP motor
<b>Gate Speed</b>	20 seconds for full open (6.5' to 8' gate)
<b>Power Options</b>	120 VAC
<b>Duty Cycle</b>	Continuous
<b>Battery Back Up</b>	Integrated, with (2) 7Ah 12VDC batteries.
<b>Battery Back Up Capacity</b>	100 cycles on a 800 lb. gate
<b>Temperature Range</b>	-40 to 160°
<b>Gearbox Ratio</b>	30:1
<b>Width X Length X Height</b>	13" X 144" X 8"
<b>Shipping Weight</b>	100 lbs.
<b>Emergency Release</b>	Lockable quick release drive arm and carriage
<b>Belt Size</b>	4L-200 (AX18)
<b>Main Sprocket Size</b>	41B15X5/8
<b>Chain Size</b>	41NP
<b>Gearbox Sprocket</b>	41B15X5/8
<b>Limit Shaft Sprocket</b>	N/A
<b>Breaker Requirement</b>	20 amp dedicated
<b>Gearbox Pulley</b>	2 ½" with ½" bore
<b>Motor Pulley</b>	2" with 5/8" bore



COMMERCIAL

### AVAILABLE ACCESSORIES



AML-1200B  
Mag Lock



Jamb Track  
Hardware



Fire  
Boxes



Gooseneck



PRIME VD-1  
Loop Detector

The Warrantor warrants the OH-200DC Gate Operator. ALL-O-MATIC INC warrants its gate openers for a period of five (5) years in commercial installations to be free from defects in circuitry, motor, gear box and workmanship. This warranty applies from the date of purchase to the original owner. Warrantor will repair or, at its option, replace any device which it finds to require service. This device must be sent to the warrantor at the consumer's expense. The warrantor will return the repaired or replaced unit to the customer at the consumer's expense. Labor charges for dealer service or replacement are the responsibility of the owner. These warranties are in lieu of all other warranties either expressed or implied, and ALL-O-MATIC INC shall not be liable for consequential damage. All implied warranties of merchantability and or fitness for a particular purpose are hereby disclaimed and excluded. This limitation is not valid in jurisdictions which do not allow limitation of incidental or consequential damages or limitation of warranty periods. Caution in order to obtain this policy, please complete the registration card and send it by mail within 30 days of purchasing from ALL-O-MATIC INC. or your INSTALLER. If not registered only a one year warranty on all parts will be provided.

**SLIDERS | SWINGERS | OVERHEADS**

The standard by which all other automatic gate operators are measured.

UL 325 2018  
COMPLIANT

UL 991  
COMPLIANT

CSA C22.2 #247

